

# INVENTORY HOME



## 122 GRAYDON DR

MOUNT ELGIN MEADOW LANDS

### THE DETAILS

PRICE	\$ 789,000
CLOSING DATE	MAY 21, 2025
LOT NUMBER	54
BEDROOMS	3
BATHS	2
SQFT	1428
GARAGE	2
MODEL	HAMILTON

**HAYHOE™**  
— HOMES —



**SALES PROFESSIONAL**

JANELL HEYERMAN

519.842.2435

Janell.heyerman@hayhoehomes.com

# SITE PLAN

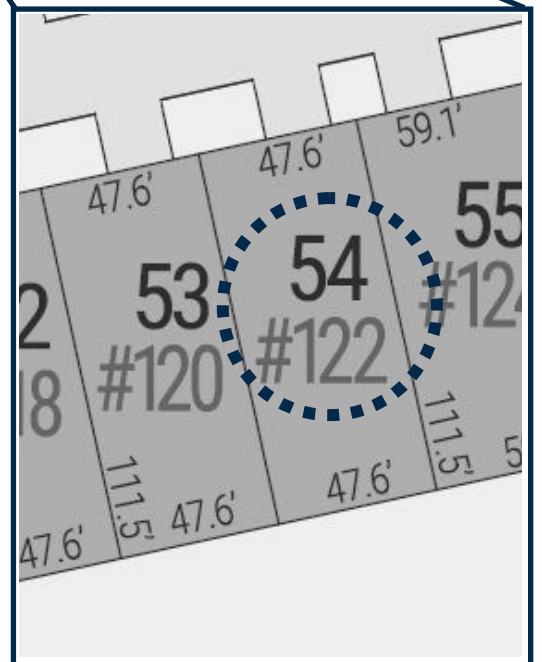


## 122 GRAYDON DR

### EXTERIOR FEATURES:

- KEYLESS ENTRY
- TREATED WOOD DECK
- BBQ GAS LINE
- ASPHALT DRIVEWAY
- WALKING TRAILS

**HAYHOE™**  
HOMES

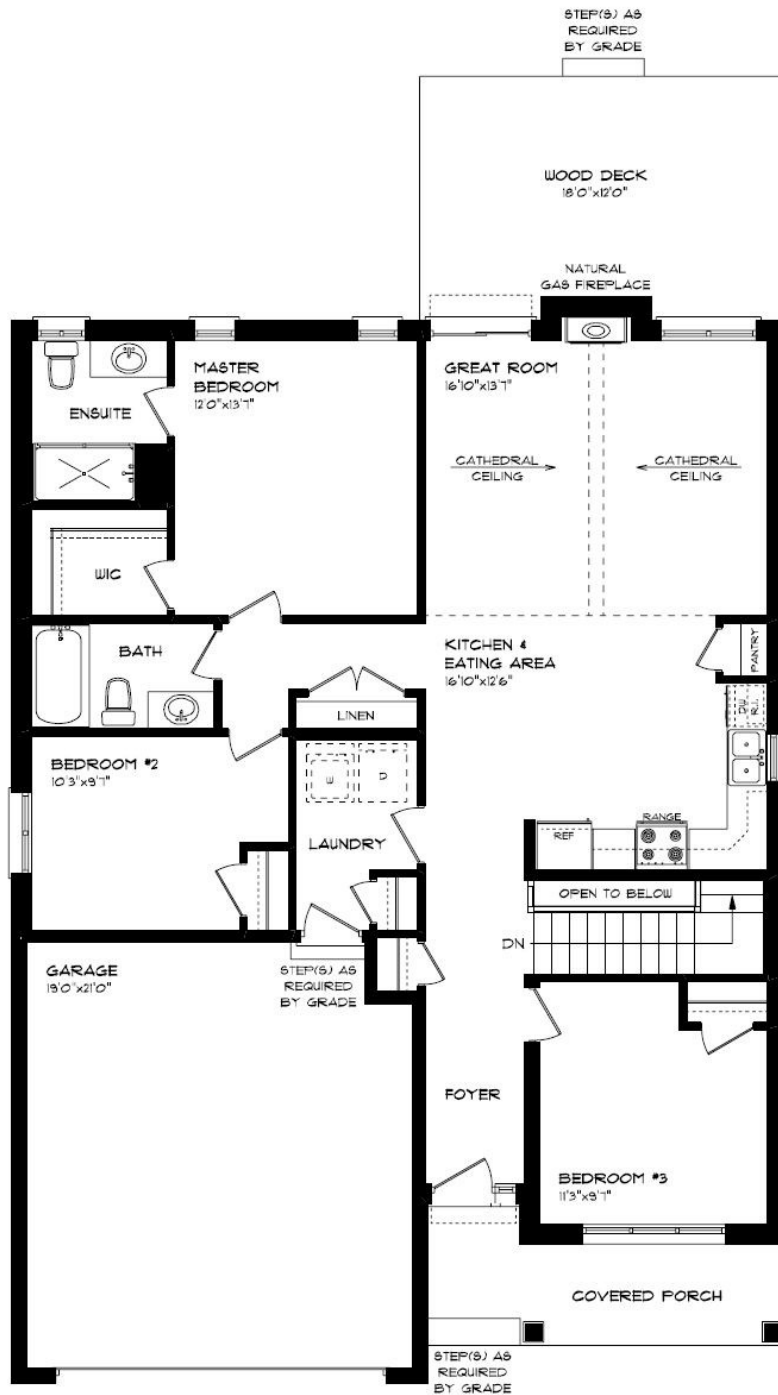


MOUNT ELGIN

MEADOW  
LANDS

# MAIN FLOOR

1222 GRAYDON DR, MOUNT ELGIN



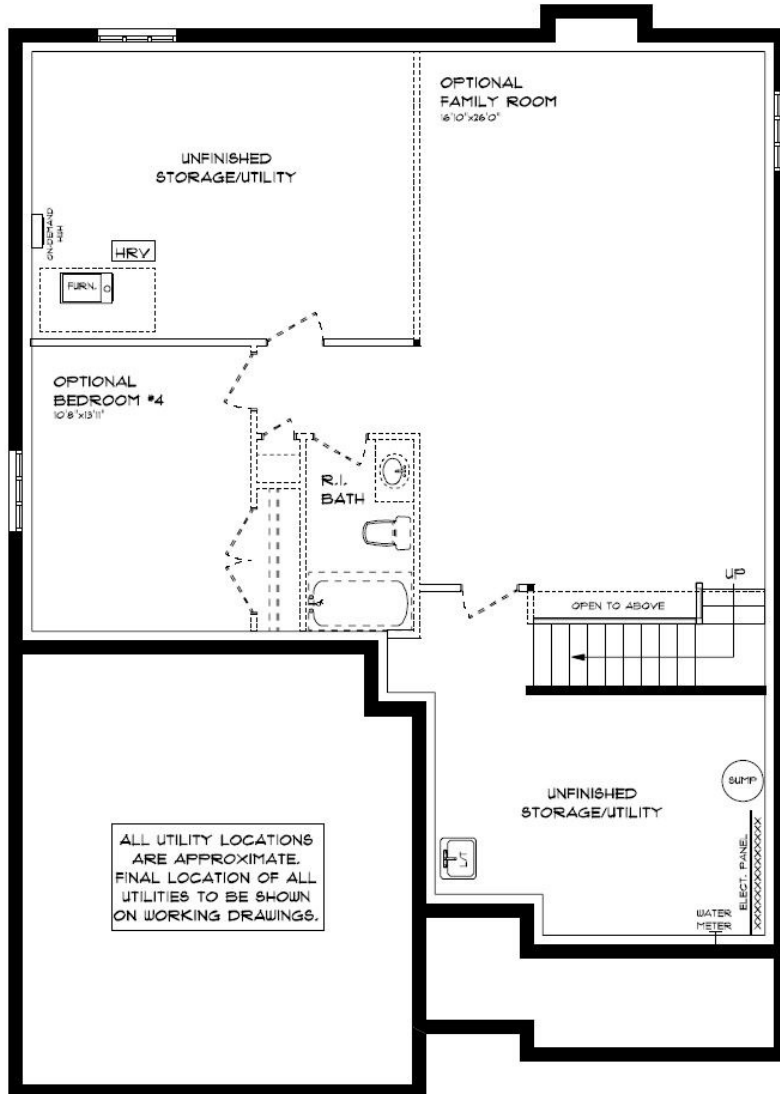
MAIN FLOOR LAUNDRY  
CUSTOM CABINETS & HOOD  
LVP FLOORING  
QUARTZ COUNTERTOPS  
KITCHEN BACKSPLASH

MAIN FLOOR:  
APPROX 1428 SQFT

**HAYHOE**<sup>TM</sup>  
HOMES

# BASEMENT

122 GRAYDON DR, MOUNT ELGIN



BASEMENT:  
UNFINISHED

- AIR CONDITIONING
- GAS FURNACE WITH HRV
- HUMIDIFIER
- NEW HOME WARRANTY



# EXTERIOR FINISHES

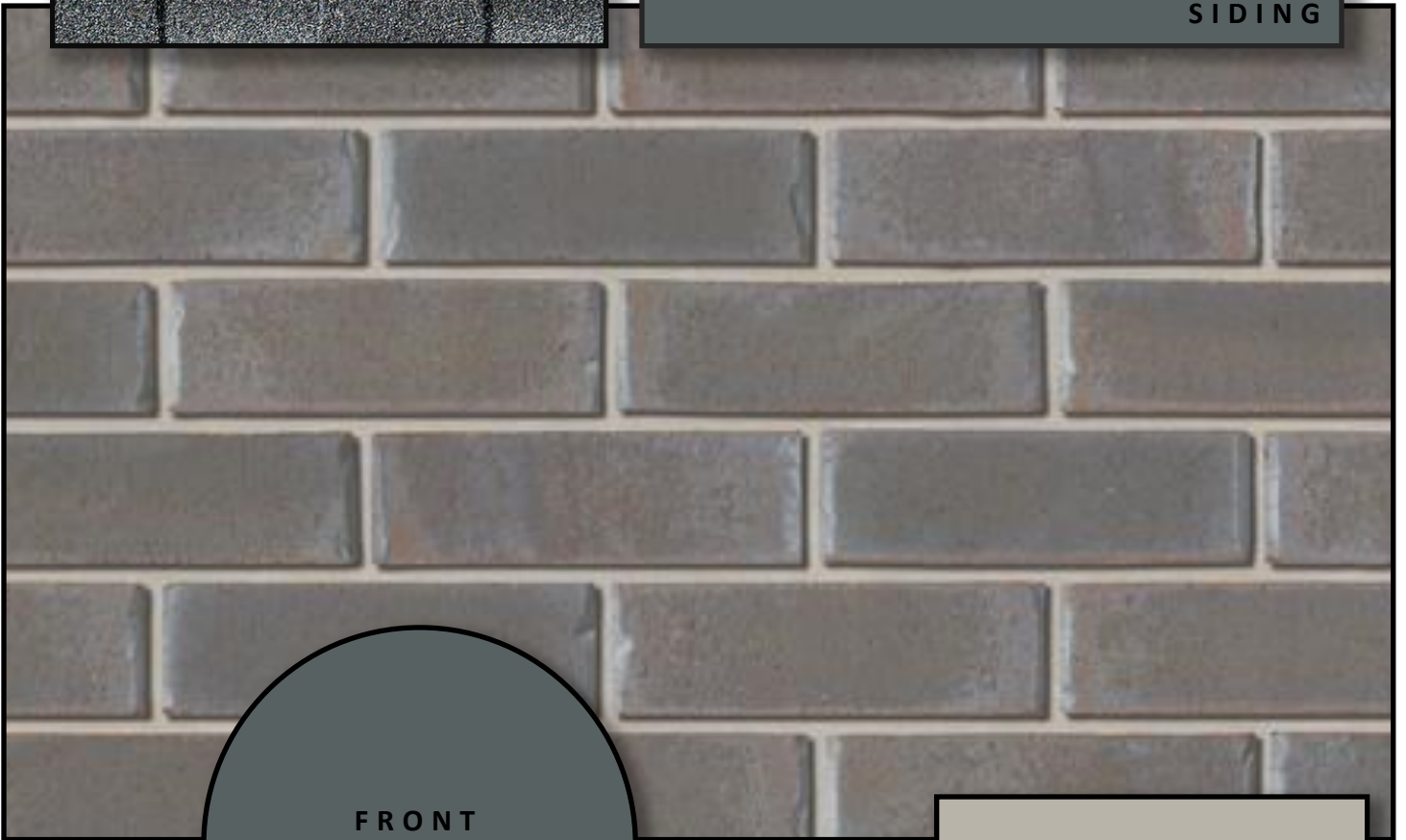
SHINGLES



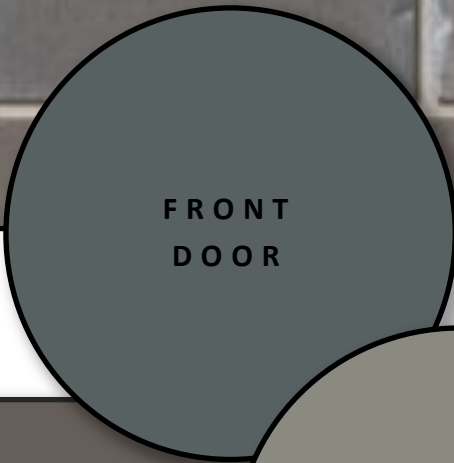
122 GRAYDON DR



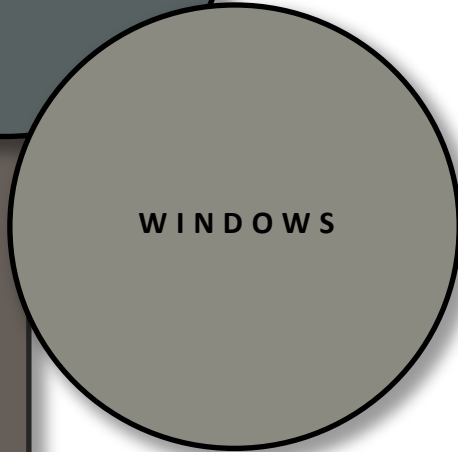
SIDING



BRICK

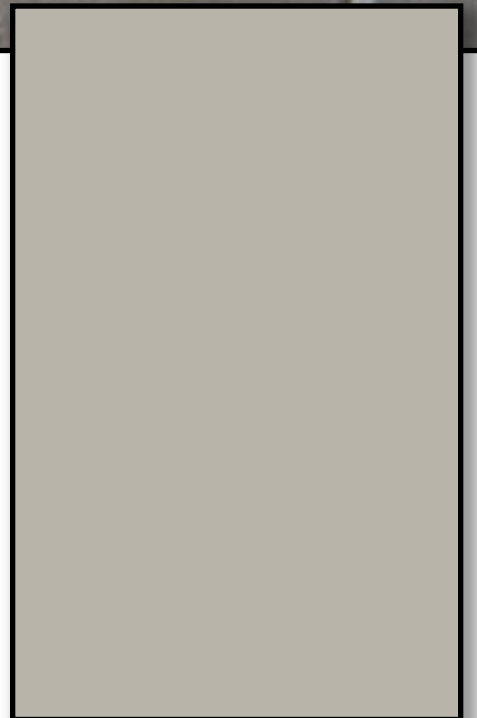
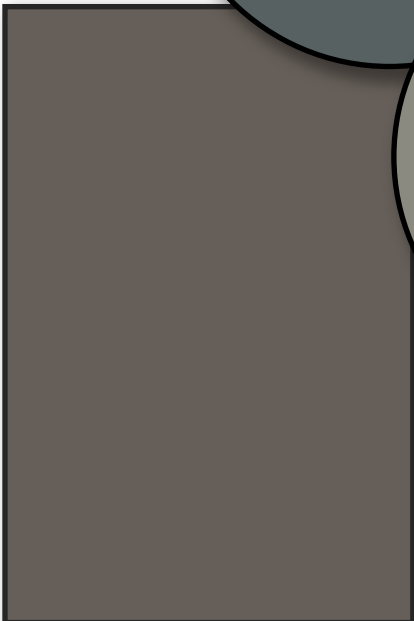


FRONT  
DOOR



WINDOWS

GARAGE DOOR



ALUMINUM



# INTERIOR FINISHES

KITCHEN BACKSPLASH



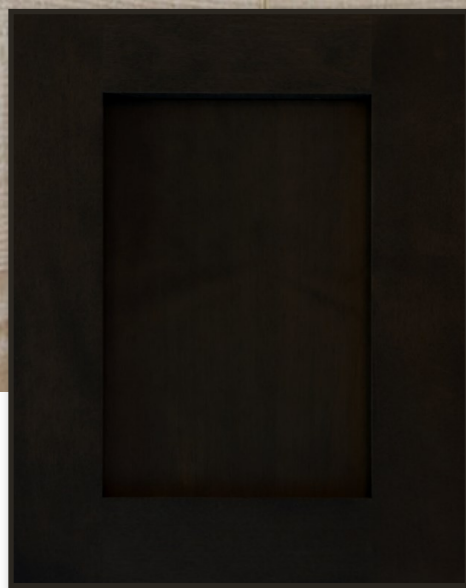
122 GRAYDON DR



QUARTZ KITCHEN COUNTERTOPS



LUXURY VINYL PLANK



STAINED KITCHEN LOWERS



PAINTED KITCHEN UPPERS



PAINT COLOUR



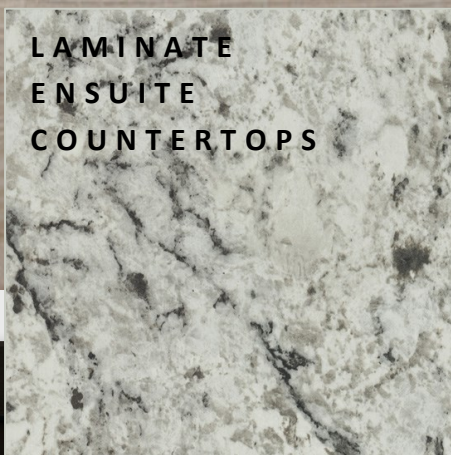
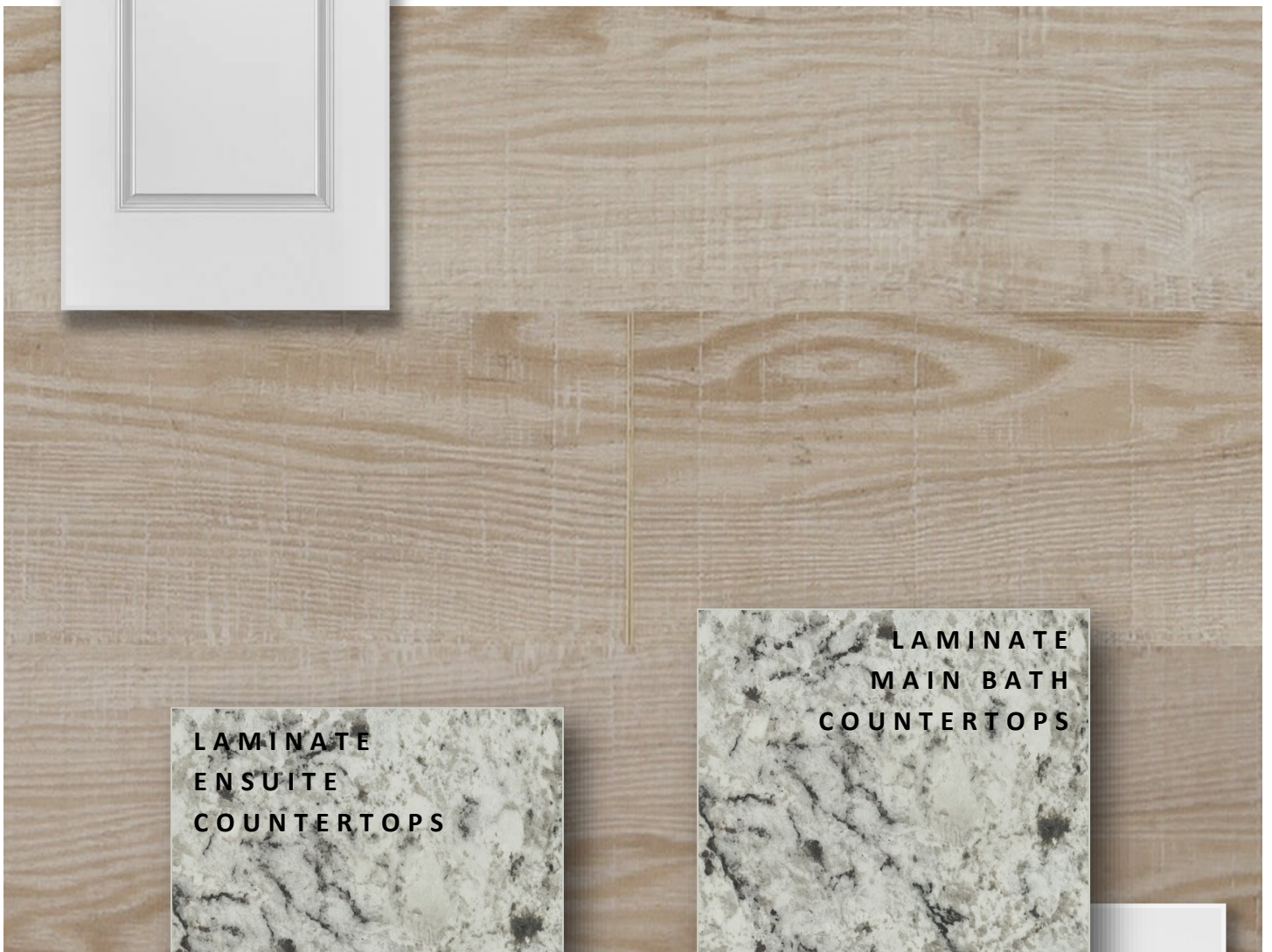
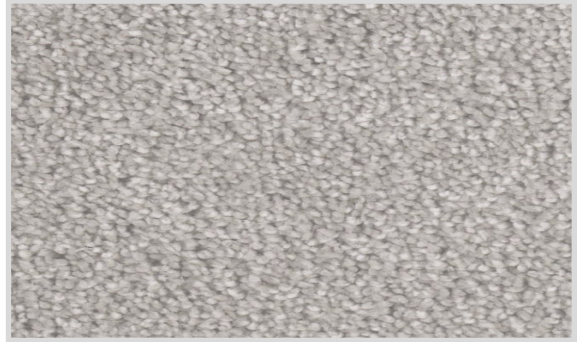
# INTERIOR FINISHES

122 GRAYDON DR

INTERIOR DOOR STYLE



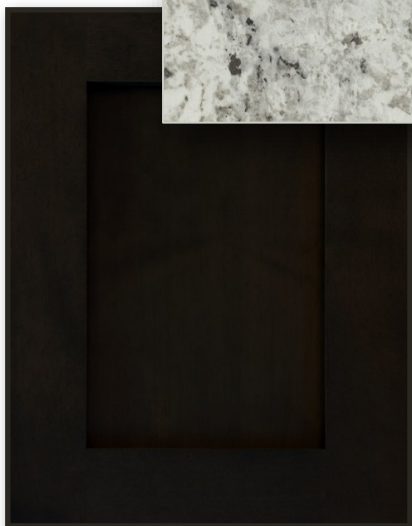
CARPET



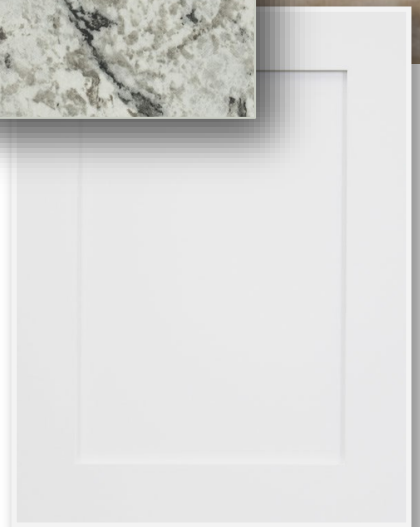
LAMINATE  
ENSUITE  
COUNTERTOPS



LAMINATE  
MAIN BATH  
COUNTERTOPS



STAINED  
ENSUITE  
CABINETRY



PAINTED  
MAIN BATH  
CABINETRY

