

WILLOW RUN

39 HEMLOCK CRES

AYLMER | ONTARIO

INVENTORY HOME



THE DETAILS

PRICE	\$750,000
CLOSING DATE	June 5, 2025
LOT NUMBER	55
BEDROOMS	3
BATHS	2.5
GARAGE	2
DRIVEWAY	18'
SQ FT	2,286
MODEL	Wrencreek

Emma Smith SALES PROFESSIONAL

519.409.1474 | emma.smith@hayhoehomes.com



WILLOW RUN

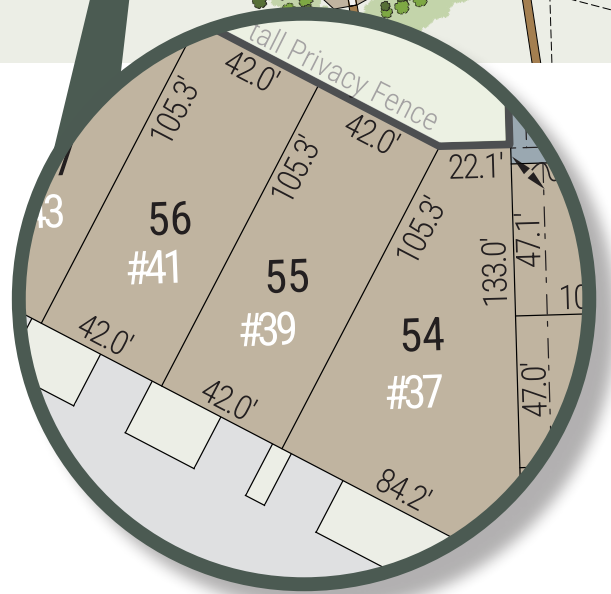
SITE PLAN

39 HEMLOCK CRES | AYLMER ON



exterior features

- KEYLESS ENTRY
- TREATED WOOD DECK
- BBQ GAS LINE
- ASPHALT DRIVEWAY
- WALKING TRAILS



WILLOW RUN

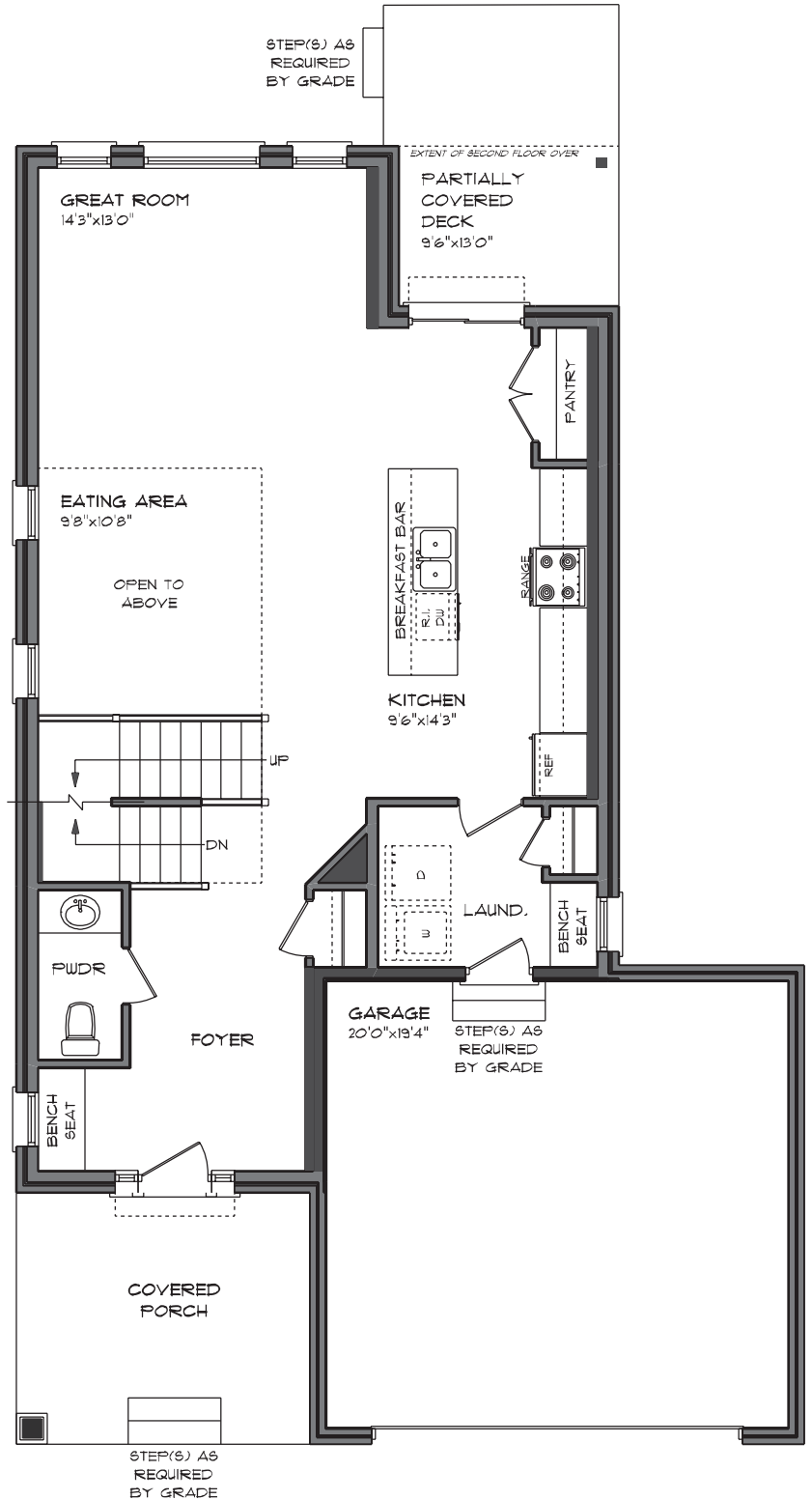
39 HEMLOCK CRES

MAIN FLOOR

994 sq ft

features

- MAIN FLOOR LAUNDRY
- TWO STOREY DINING
- QUARTZ COUNTERTOPS
- KITCHEN BACKSPLASH
- DOUBLE CAR GARAGE
- KITCHEN PANTRY



WILLOW RUN

39 HEMLOCK CRES

SECOND FLOOR

1013 sq ft

features

PROFESSIONALLY DESIGNED

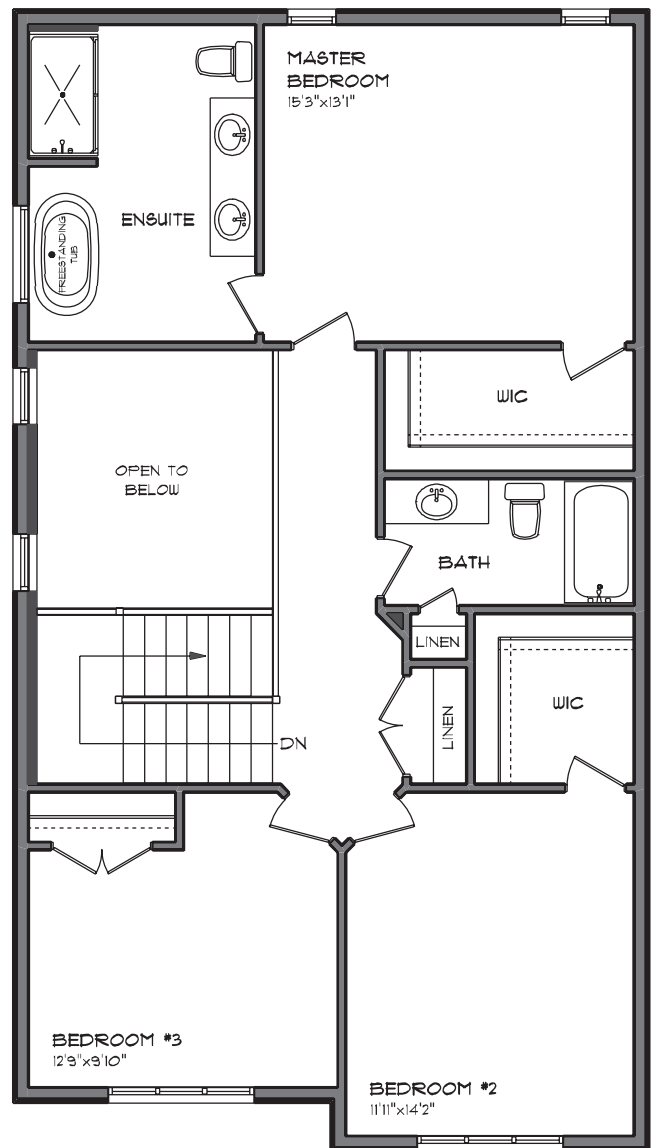
SOAKER TUB

DOUBLE ENSUITE VANITY

CARPET FLOORING

CERAMIC TILE FLOORING

WALK-IN CLOSET



WILLOW RUN

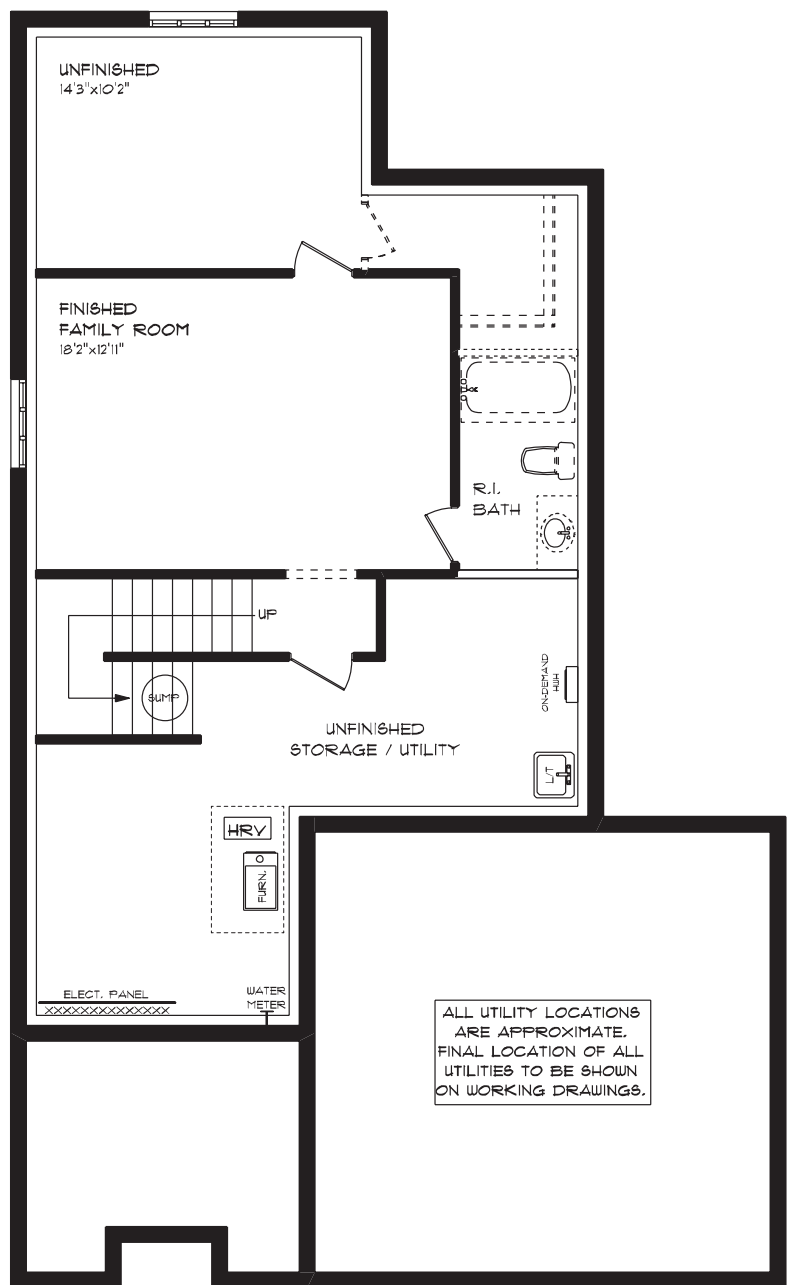
39 HEMLOCK CRES

LOWER LEVEL

279 sqft

features

- FINISHED FAMILY ROOM
- AIR CONDITIONING
- GAS FURNACE WITH HRV
- HUMIDIFIER
- LAUNDRY TUB
- NEW HOME WARRANTY



WILLOW RUN

39 HEMLOCK CRES

EXTERIOR FINISHES

SHINGLES

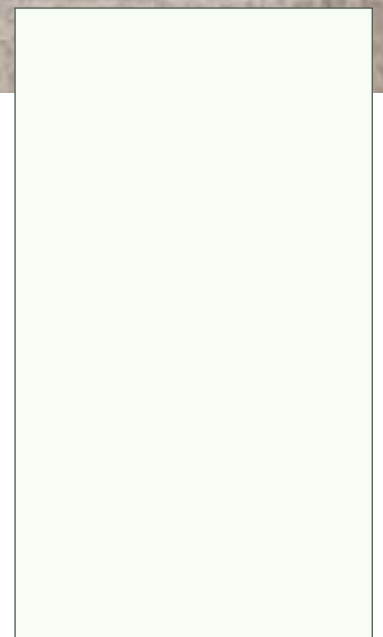
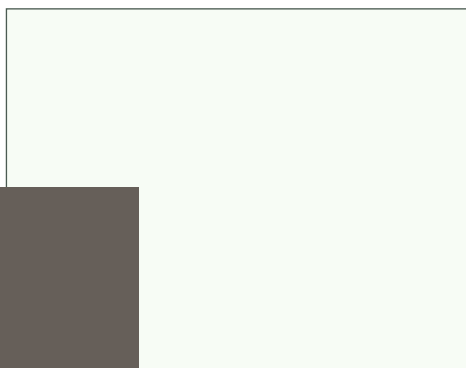


SIDING

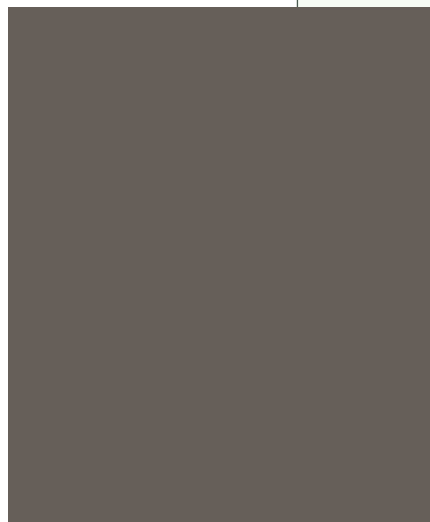


BRICK

WINDOWS



ALUMINUM



GARAGE DOOR



FRONT DOOR

WILLOW RUN

39 HEMLOCK CRES

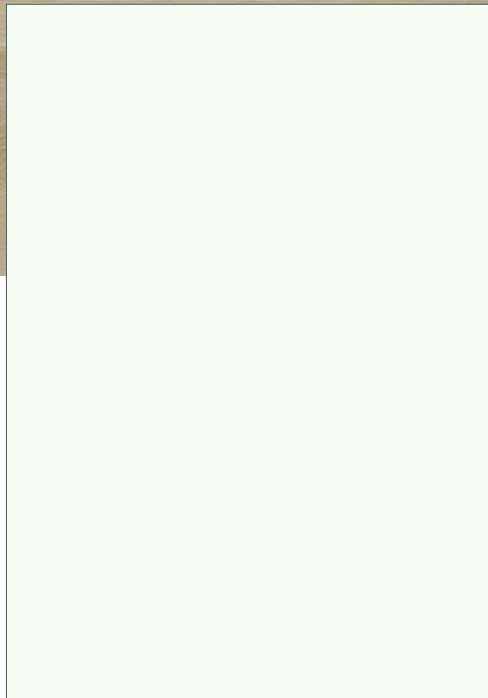
INTERIOR FINISHES

QUARTZ KITCHEN COUNTERTOPS & BACKSPLASH



PAINT

LUXURY VINYL PLANK



PAINTED KITCHEN
UPPERS & ISLAND



MELAMINE KITCHEN LOWERS

WILLOW RUN

39 HEMLOCK CRES

INTERIOR FINISHES

INTERIOR DOOR STYLE



PAINT

CARPET



VANITY LAMINATE COUNTERTOP



MELAMINE VANITY CABINetry



MAIN BATH & ENSUITE TILE

