

INVENTORY HOME



126 GRAYDON DR.

MOUNT ELGIN MEADOW LANDS

THE DETAILS

PRICE	\$ 799,000
CLOSING DATE	AVAILABLE NOW
LOT NUMBER	56
BEDROOMS	4
BATHS	2.5
SQFT	1923
GARAGE	2
MODEL	VERMONT

HAYHOE™
— HOMES —



SALES PROFESSIONAL

JANELL HEYERMAN

519.842.2435

Janell.heyerman@hayhoehomes.com

SITE PLAN

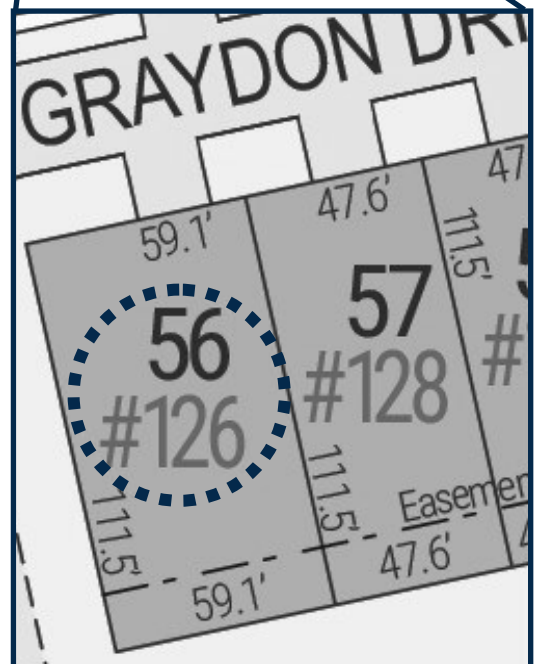


126 GRAYDON

EXTERIOR FEATURES:

- KEYLESS ENTRY
- TREATED WOOD DECK
- BBQ GAS LINE
- ASPHALT DRIVEWAY
- WALKING TRAILS

HAYHOE™
HOMES

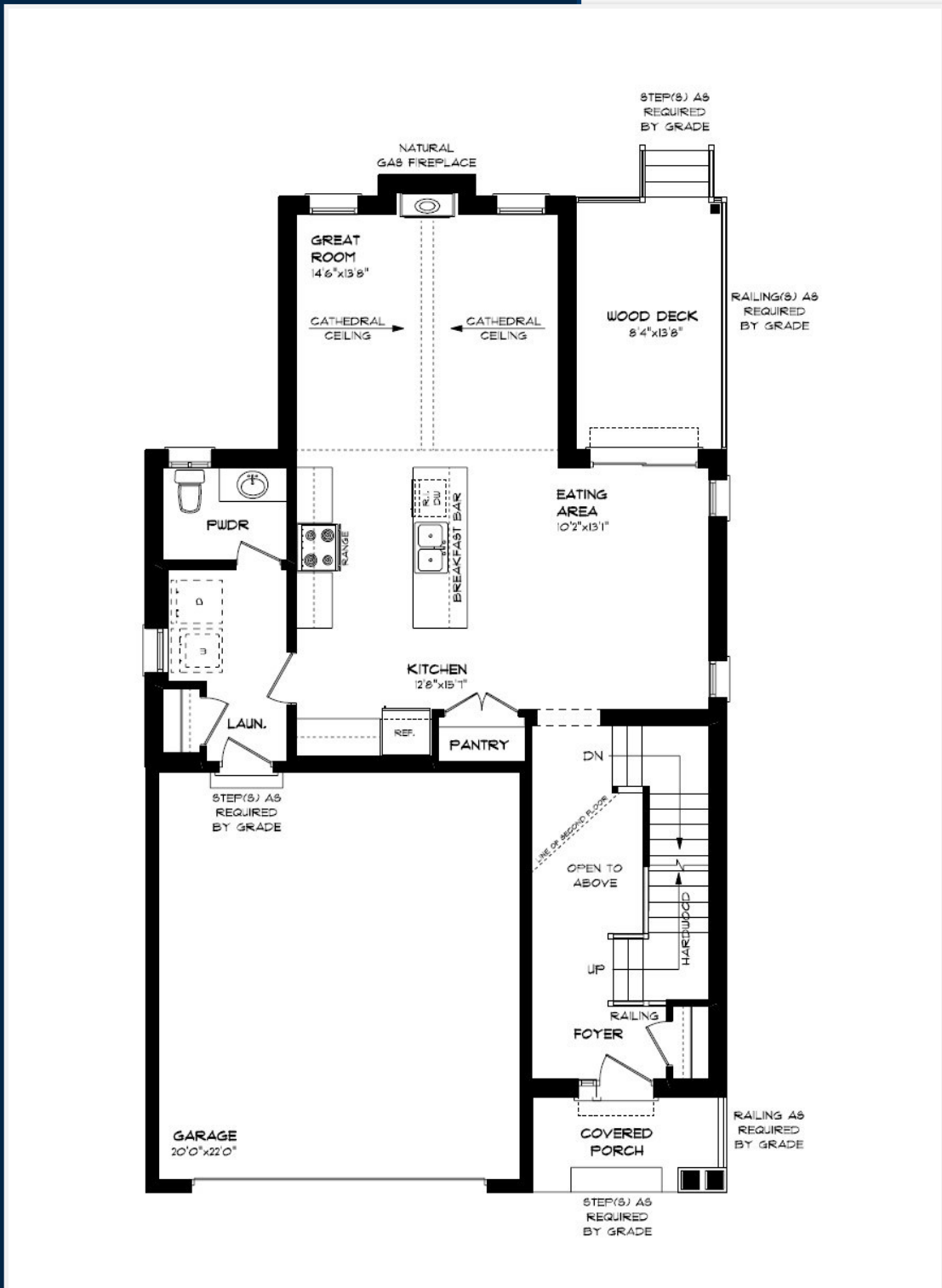


MOUNT ELGIN

MEADOW
LANDS

MAIN FLOOR

126 GRAYDON DR., MOUNT ELGIN



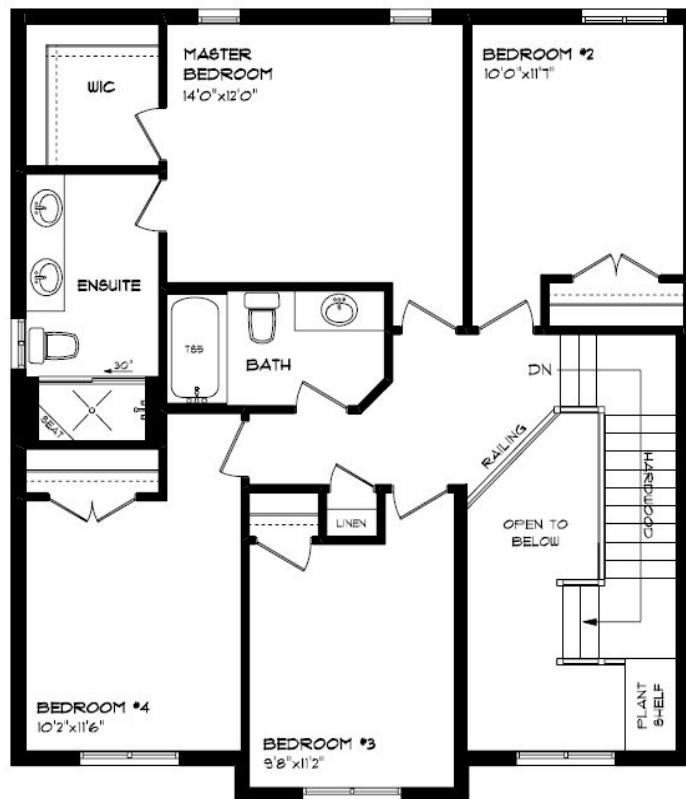
MAIN FLOOR LAUNDRY
CUSTOM CABINETS & HOOD
GAS FIREPLACE
HARDWOOD FLOORING
QUARTZ COUNTERTOPS
KITCHEN BACKSPLASH

MAIN FLOOR:
APPROX 978 SQFT

HAYHOE™
— HOMES —

SECOND FLOOR

126 GRAYDON DR., MOUNT ELGIN



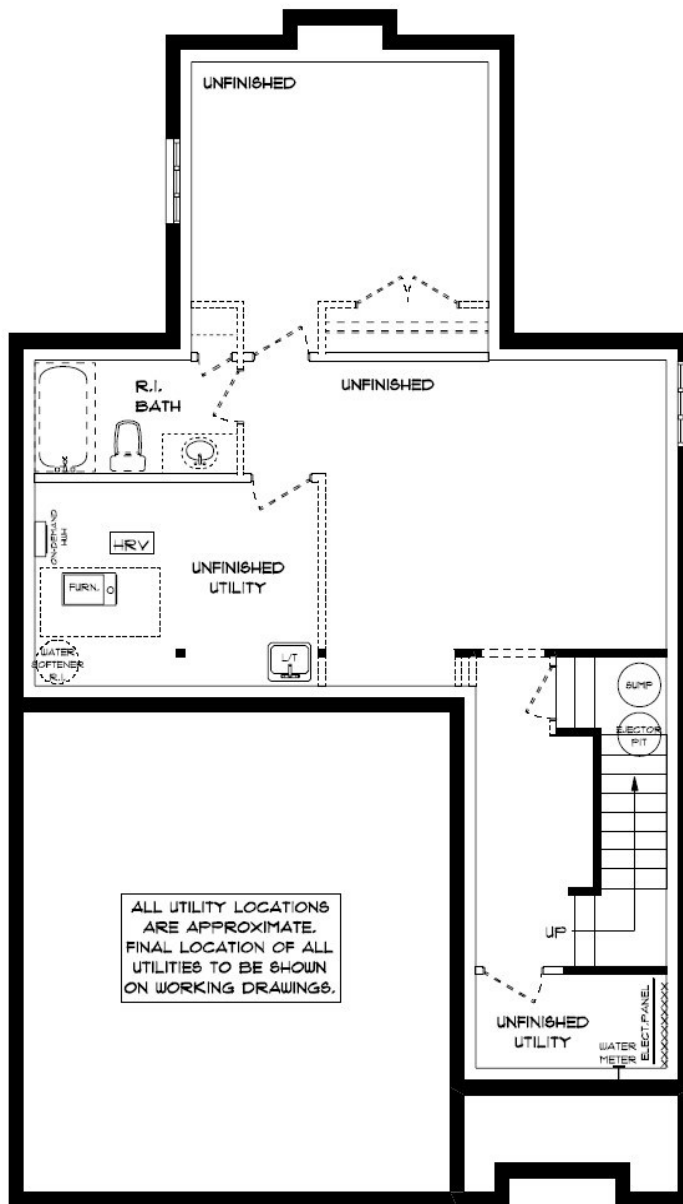
DOUBLE SINK ENSUITE
CUSTOM TILED SHOWER
CARPET FLOORING
TILED FLOORING
DECORATIVE LIGHTING

SECOND FLOOR:
APPROX 945 SQFT

HAYHOETM
— HOMES —

BASEMENT

126 GRAYDON DR., MOUNT ELGIN



AIR CONDITIONING
GAS FURNACE WITH HRV
HUMIDIFIER
NEW HOME WARRANTY

BASEMENT:
UNFINISHED

HAYHOETM
— HOMES —

EXTERIOR FINISHES

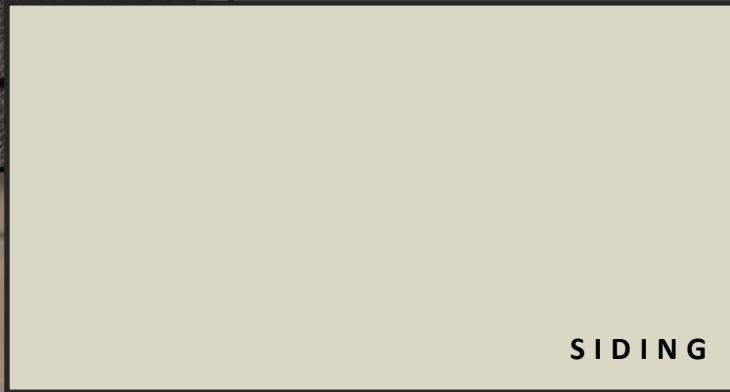
SHINGLES



126 Graydon Dr..



SIDING



SIDING



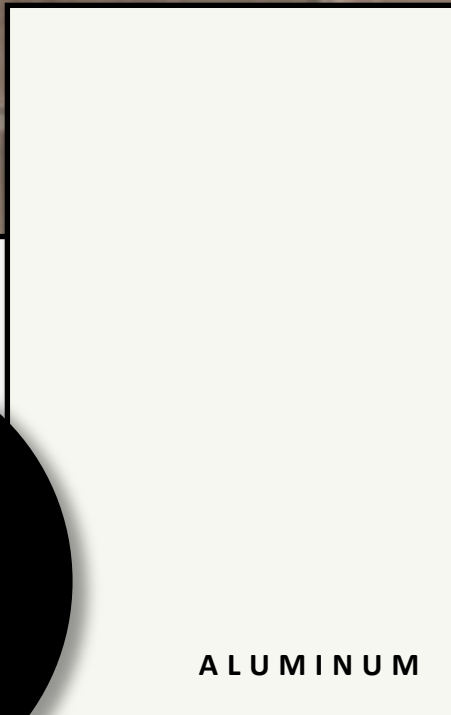
BRICK



FRONT
DOOR

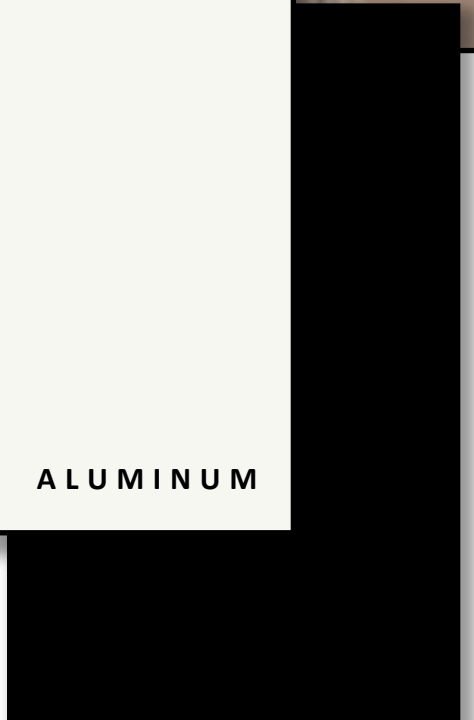
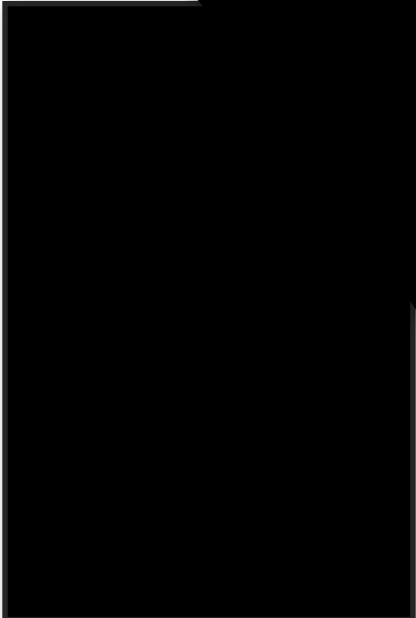


WINDOWS



ALUMINUM

GARAGE DOOR



ALUMINUM



INTERIOR FINISHES

KITCHEN BACKSPLASH



126 Graydon Dr



KITCHEN COUNTERTOPS



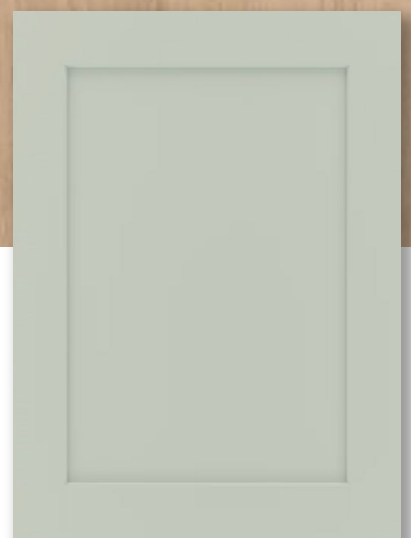
PAINT
COLOUR



MAIN
FLOOR TILE



HAYHOE™
•HOMES•



HARDWOOD

KITCHEN
CABINTRY

PRICE, PRODUCTS, COLOURS & FEATURES ARE SUBJECT TO

CHANGE WITHOUT NOTICE.

January 2025

INTERIOR FINISHES

126 Graydon Dr

INTERIOR DOOR STYLE



CARPET



ENSUITE CUSTOM SHOWER

MAIN BATH COUNTERTOPS

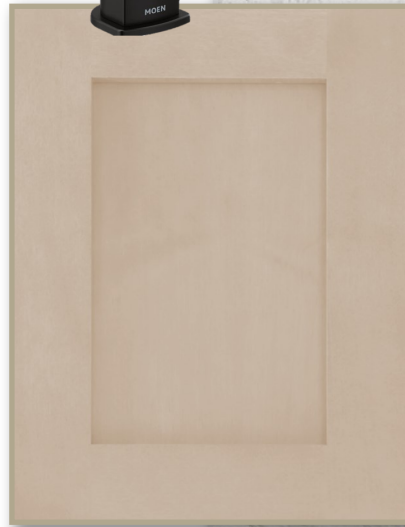


MAIN BATH CABINERY



MAIN BATH FLOOR TILE

ENSUITE COUNTERTOPS



ENSUITE CABINERY



ENSUITE FLOOR TILE

HAYHOE™
—HOMES—