

# INVENTORY HOME



## 126 GRAYDON DR.

MOUNT ELGIN MEADOW LANDS

### THE DETAILS

PRICE	\$ 859,000
CLOSING DATE	JANUARY 3, 2025
LOT NUMBER	56
BEDROOMS	4
BATHS	2.5
SQFT	1923
GARAGE	2
MODEL	VERMONT

**HAYHOE™**  
— HOMES —



**SALES PROFESSIONAL**

JANELL HEYERMAN

519.842.2435

Janell.heyerman@hayhoehomes.com

# SITE PLAN

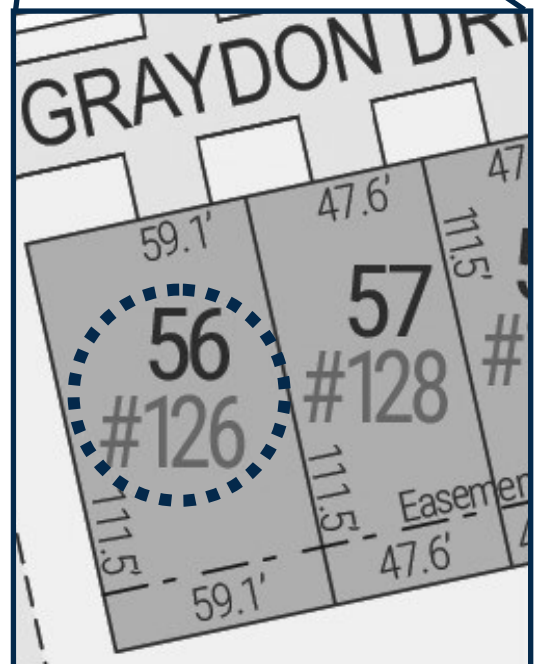


## 126 GRAYDON

### EXTERIOR FEATURES:

- KEYLESS ENTRY
- TREATED WOOD DECK
- BBQ GAS LINE
- ASPHALT DRIVEWAY
- WALKING TRAILS

**HAYHOE™**  
— HOMES —

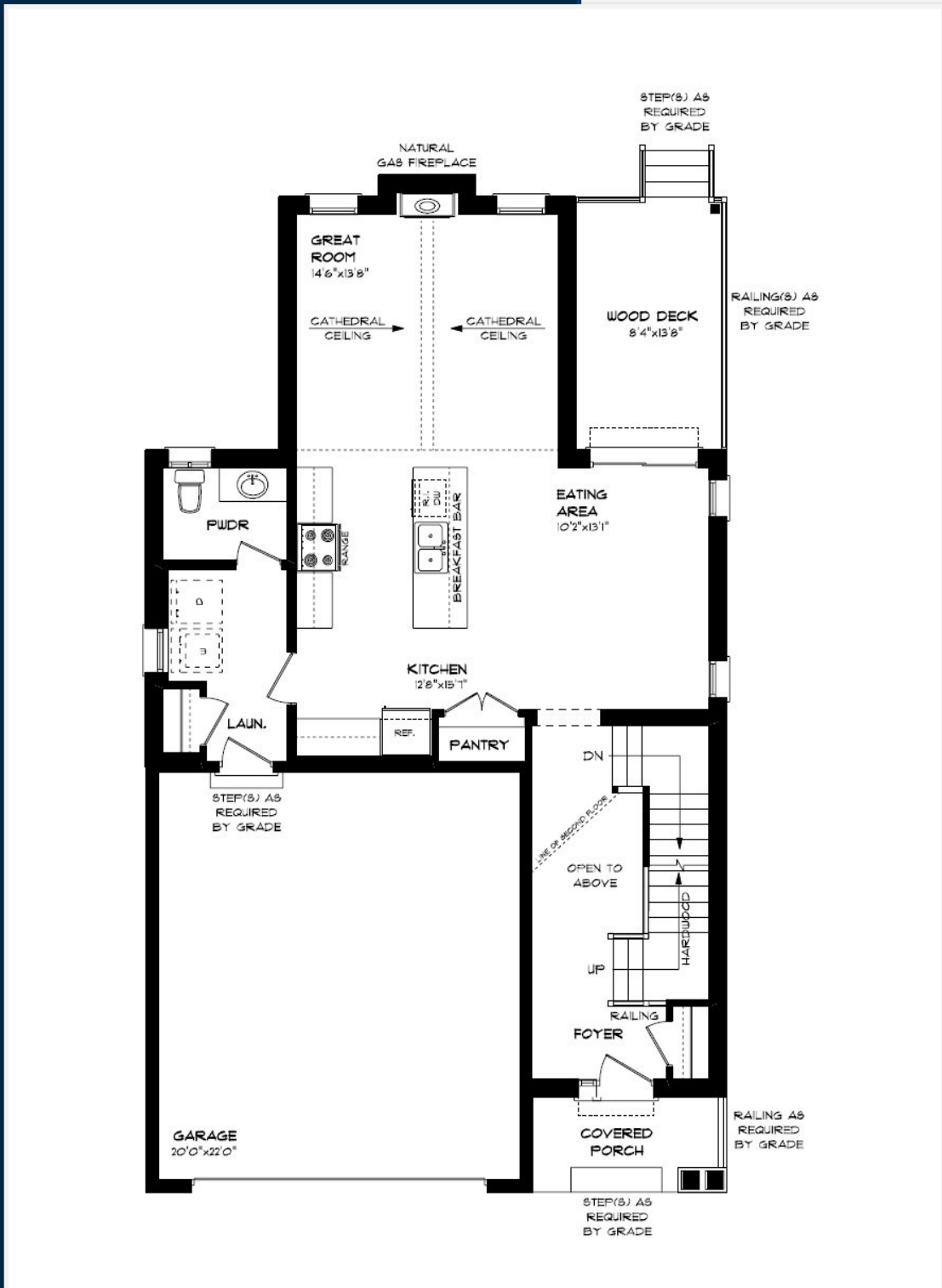


MOUNT ELGIN

**MEADOW  
LANDS**

# MAIN FLOOR

126 GRAYDON DR., MOUNT ELGIN



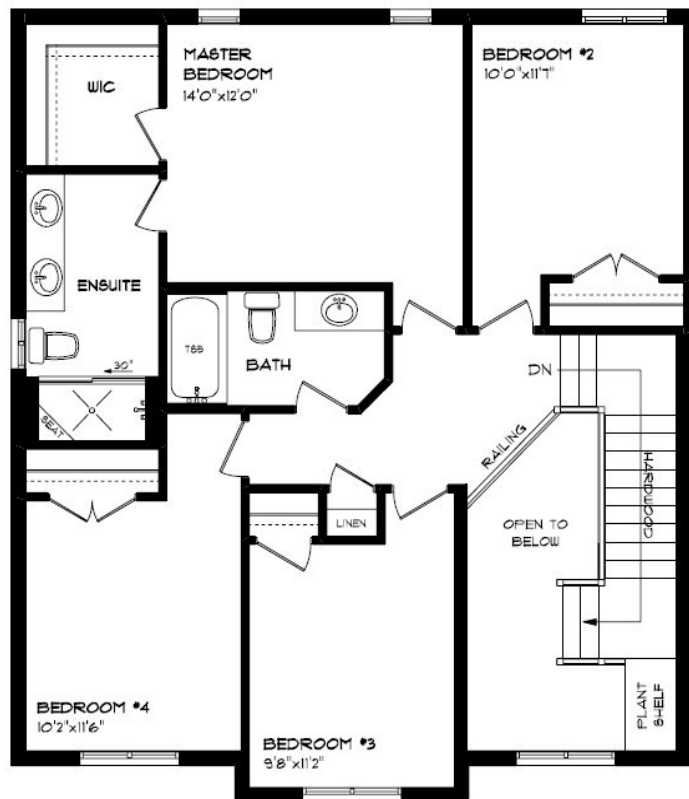
MAIN FLOOR LAUNDRY  
CUSTOM CABINETS & HOOD  
GAS FIREPLACE  
HARDWOOD FLOORING  
QUARTZ COUNTERTOPS  
KITCHEN BACKSPLASH

MAIN FLOOR:  
APPROX 978 SQFT

**HAYHOE**<sup>TM</sup>  
— HOMES —

# SECOND FLOOR

126 GRAYDON DR., MOUNT ELGIN



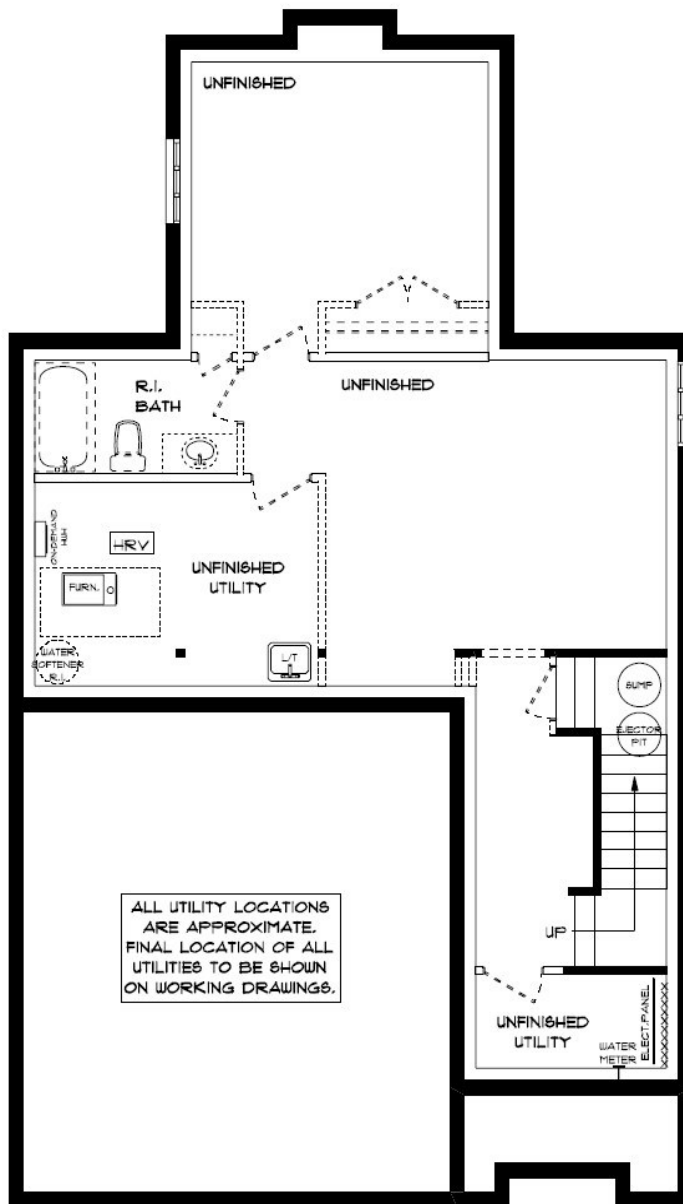
DOUBLE SINK ENSUITE  
CUSTOM TILED SHOWER  
CARPET FLOORING  
TILED FLOORING  
DECORATIVE LIGHTING

SECOND FLOOR:  
APPROX 945 SQFT

**HAYHOE**<sup>TM</sup>  
— HOMES —

# BASEMENT

126 GRAYDON DR., MOUNT ELGIN



AIR CONDITIONING  
GAS FURNACE WITH HRV  
HUMIDIFIER  
NEW HOME WARRANTY

BASEMENT:  
UNFINISHED

**HAYHOE™**  
— HOMES —



# EXTERIOR FINISHES

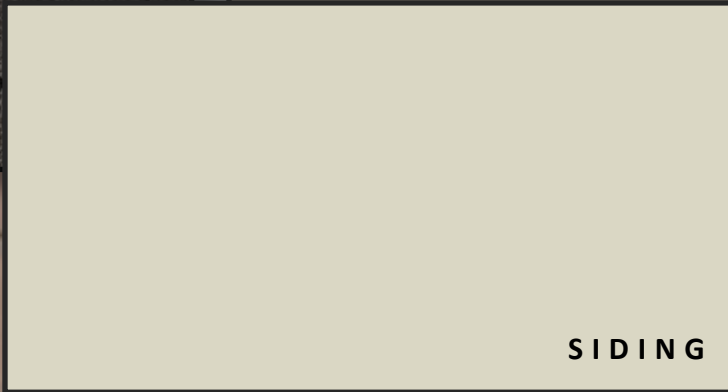
SHINGLES



126 Graydon Dr..



SIDING



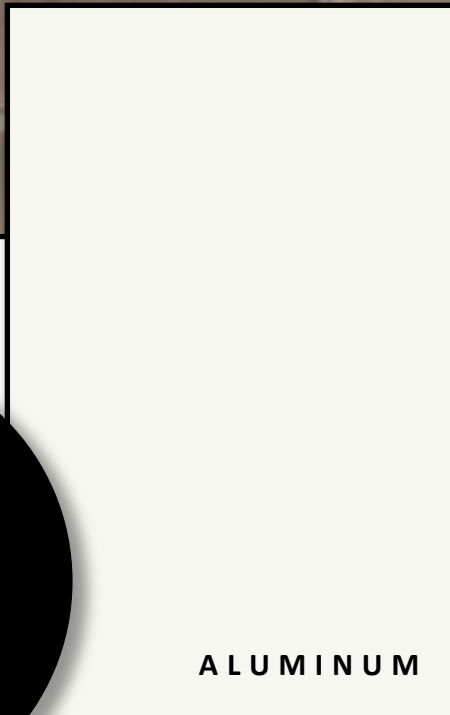
SIDING



BRICK

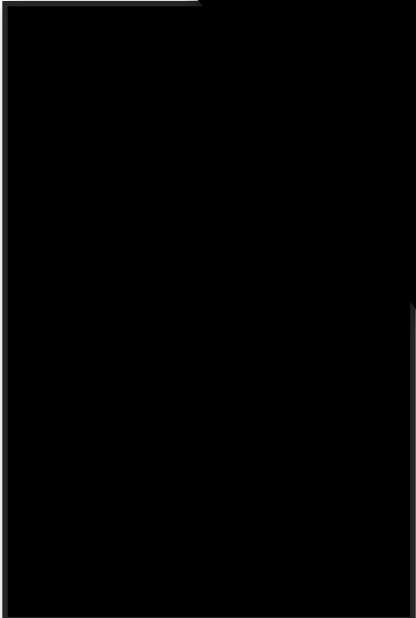


FRONT  
DOOR

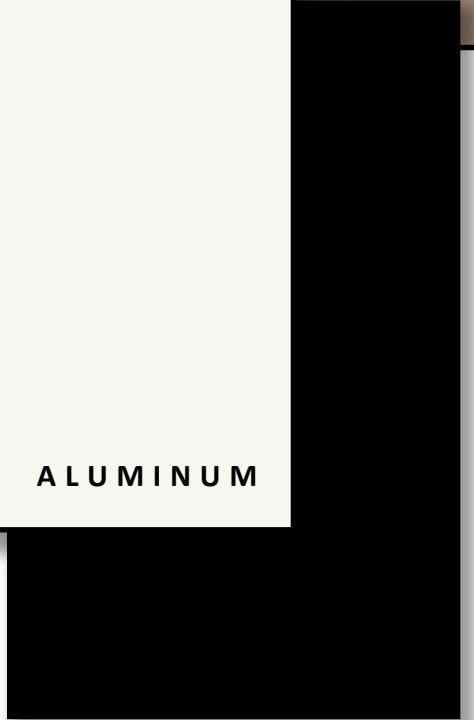


ALUMINUM

GARAGE DOOR



WINDOWS



ALUMINUM



# INTERIOR FINISHES

KITCHEN BACKSPLASH



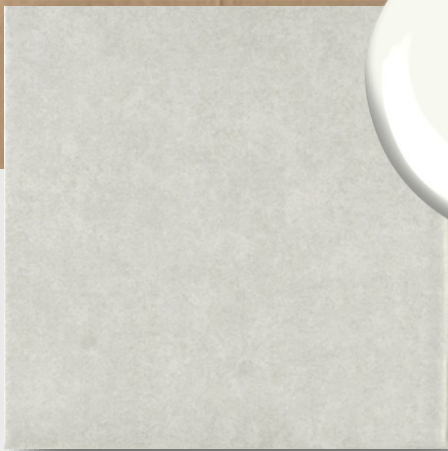
126 Graydon Dr



KITCHEN COUNTERTOPS



PAINT  
COLOUR



MAIN  
FLOOR TILE



**HAYHOE™**  
HOMES



HARDWOOD

KITCHEN  
CABINTRY

PRICE, PRODUCTS, COLOURS & FEATURES ARE SUBJECT TO

CHANGE WITHOUT NOTICE.

NOVEMBER 2024

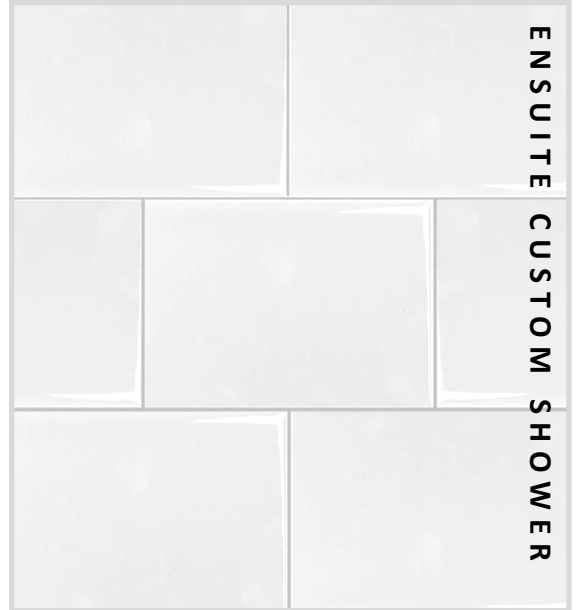
# INTERIOR FINISHES

126 Graydon Dr

INTERIOR DOOR STYLE



CARPET



ENSUITE CUSTOM SHOWER

MAIN BATH COUNTERTOPS

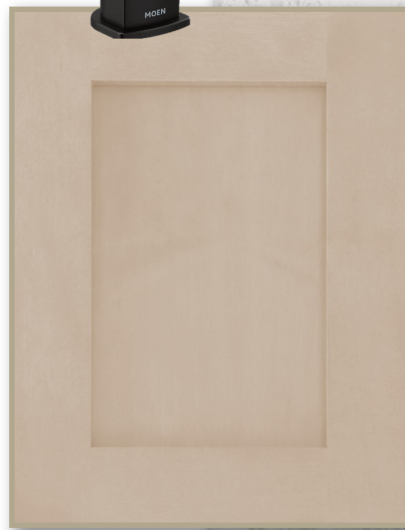


MAIN BATH CABINERY



MAIN BATH FLOOR TILE

ENSUITE COUNTERTOPS



ENSUITE CABINERY



ENSUITE FLOOR TILE

**HAYHOE™**  
**—HOMES—**