

INVENTORY HOME



128 GRAYDON DR.

MOUNT ELGIN MEADOW LANDS

THE DETAILS

PRICE	\$ 859,900
CLOSING DATE	AVAILABLE NOW
LOT NUMBER	57
BEDROOMS	4
BATHS	2.5
SQFT	2254
GARAGE	2
MODEL	WELLSHIRE

HAYHOE™
—HOMES—



SALES PROFESSIONAL

JANELL HEYERMAN

519.842.2435

Janell.heyerman@hayhoehomes.com

SITE PLAN

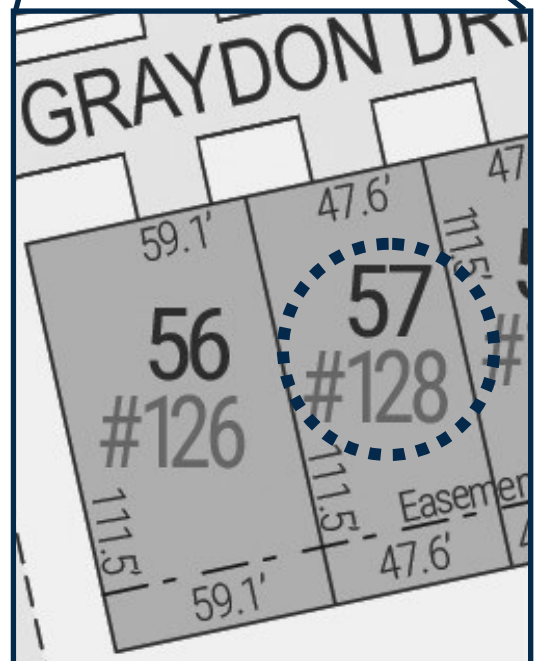


128 GRAYDON

EXTERIOR FEATURES:

- KEYLESS ENTRY
- TREATED WOOD DECK
- BBQ GAS LINE
- ASPHALT DRIVEWAY
- WALKING TRAILS

HAYHOE™
HOMES

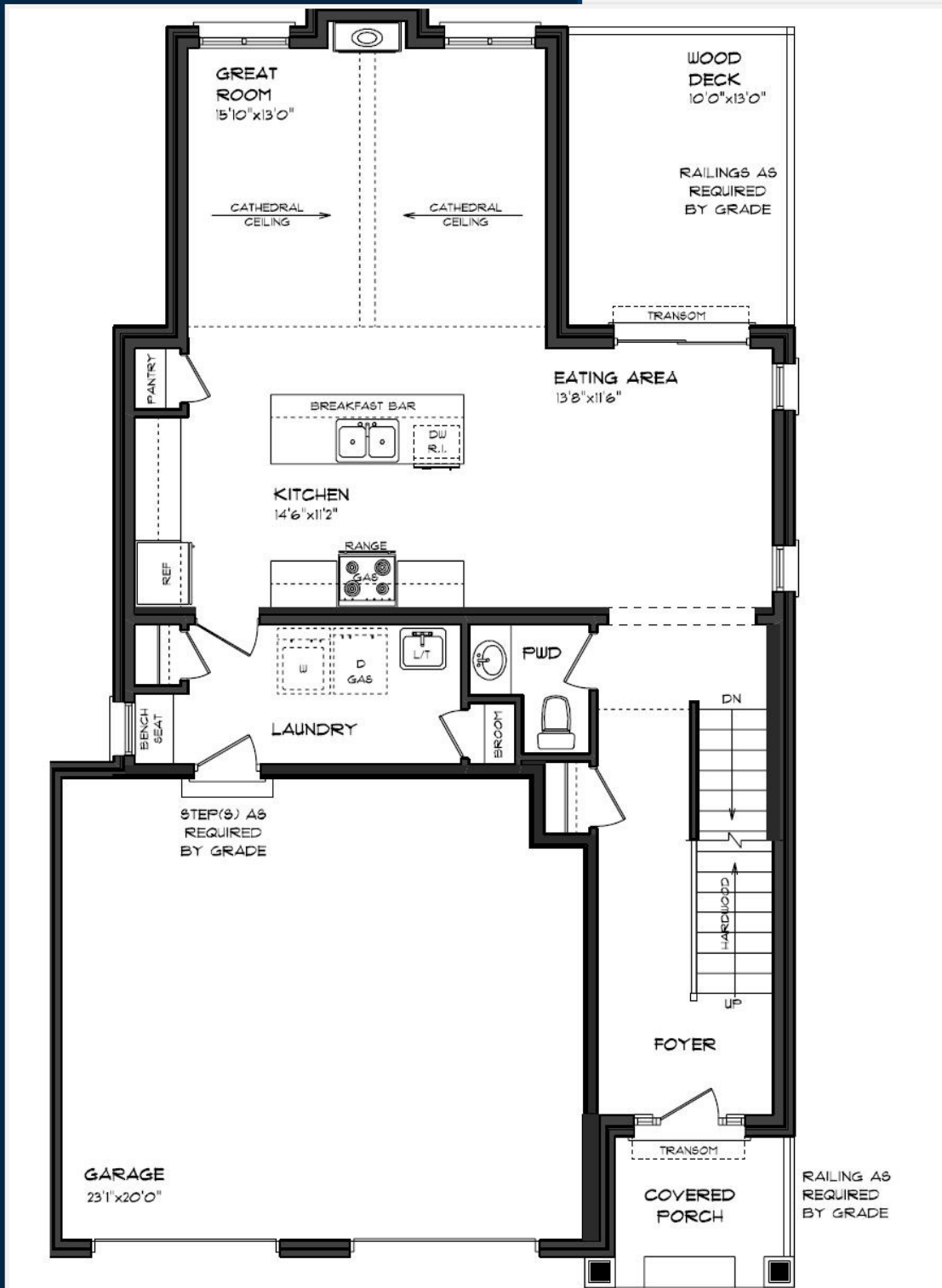


MOUNT ELGIN

MEADOW
LANDS

MAIN FLOOR

128 GRAYDON DR., MOUNT ELGIN



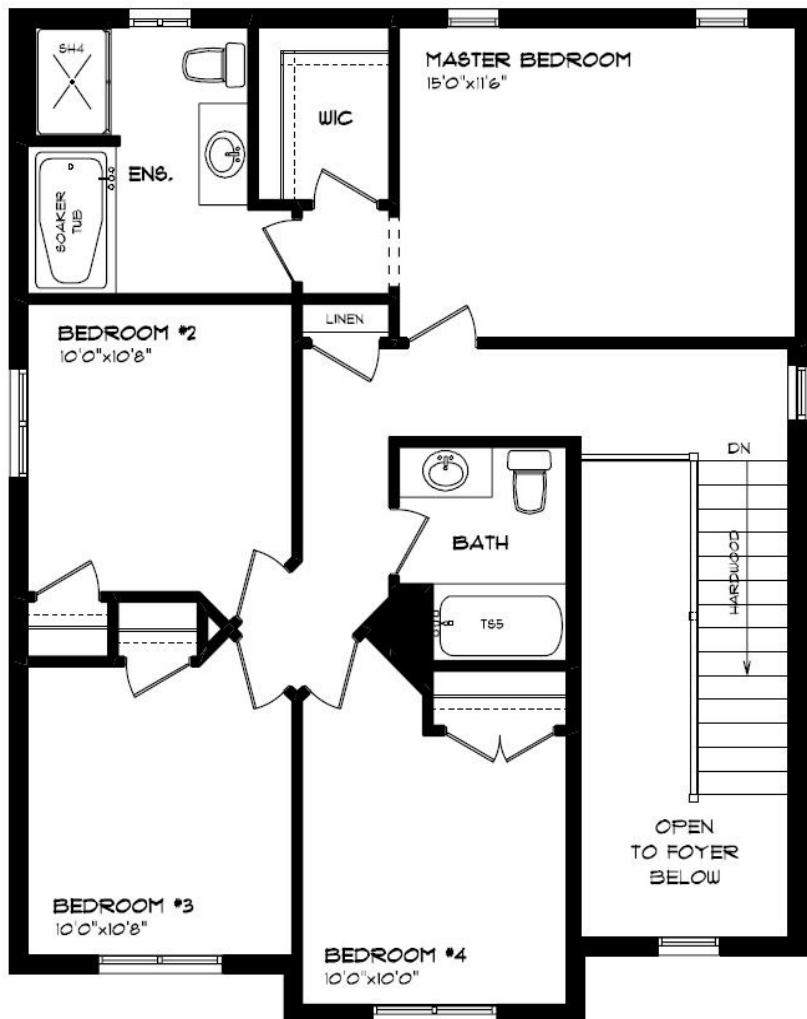
MAIN FLOOR LAUNDRY
 CUSTOM CABINETS & HOOD
 GAS FIREPLACE
 HARDWOOD FLOORING
 QUARTZ COUNTERTOPS
 KITCHEN BACKSPLASH

MAIN FLOOR:
 APPROX 963 SQFT



SECOND FLOOR

128 GRAYDON DR., MOUNT ELGIN



SOAKER TUB

CARPET FLOORING

TILED FLOORING

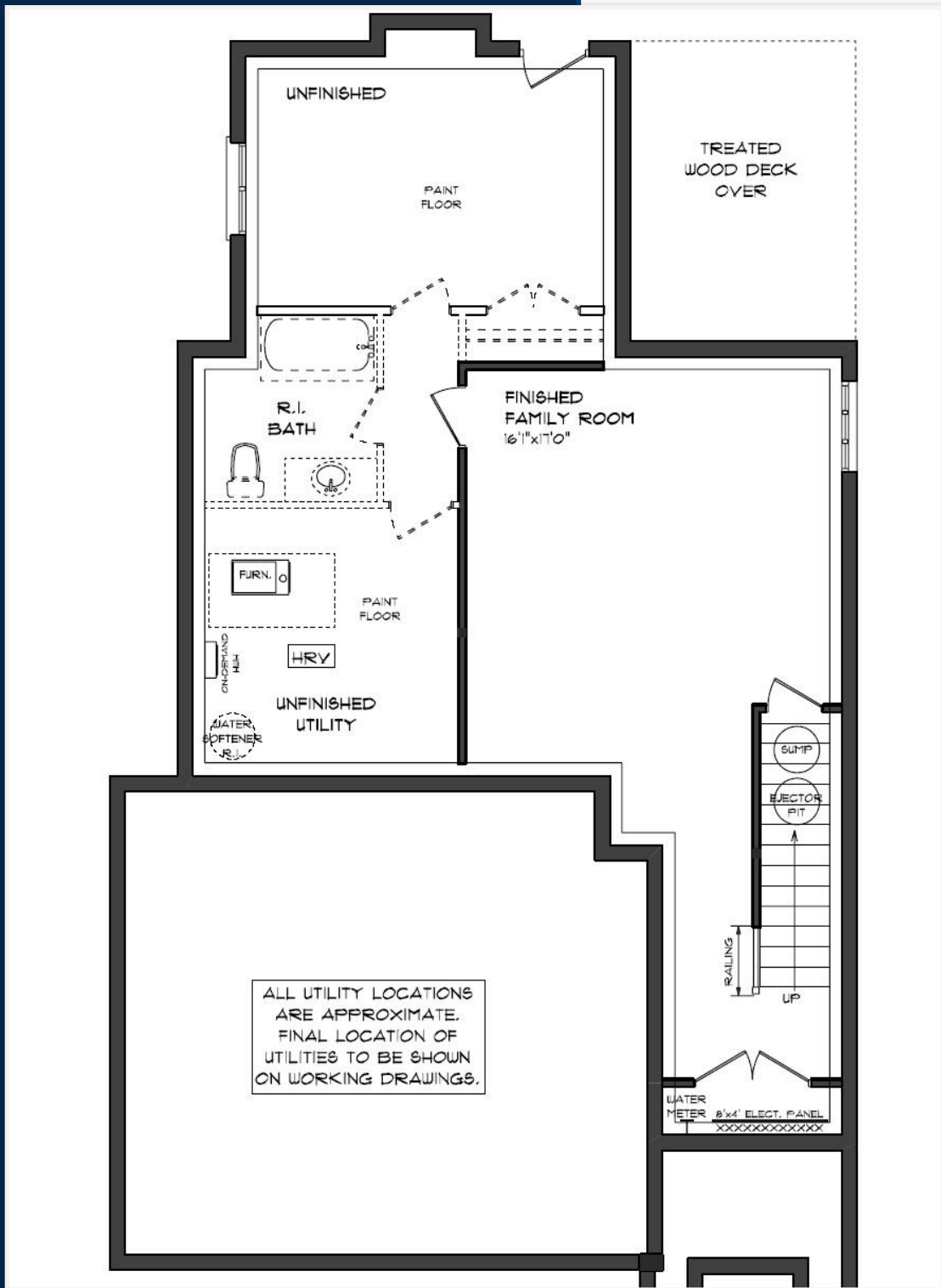
DECORATIVE LIGHTING

SECOND FLOOR:
APPROX 915 SQFT

HAYHOE™
— HOMES —

BASEMENT

128 GRAYDON DR., MOUNT ELGIN



- AIR CONDITIONING
- CARPET FLOORING
- GAS FURNACE WITH HRV
- HUMIDIFIER
- NEW HOME WARRANTY

BASEMENT:
APPROX. 376 SQFT

HAYHOE™
— HOMES —

EXTERIOR FINISHES

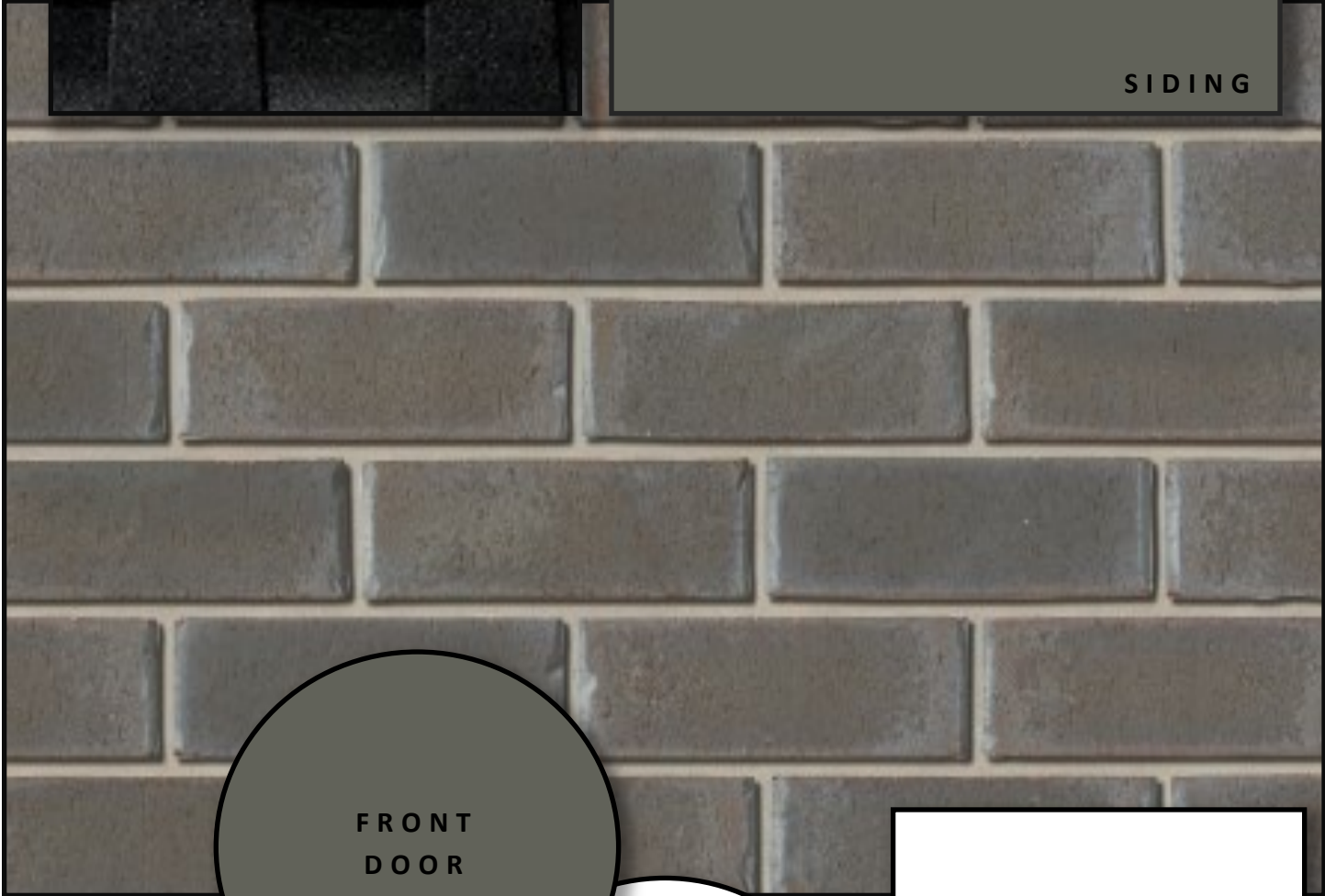
SHINGLES



128 GRAYDON DR



SIDING

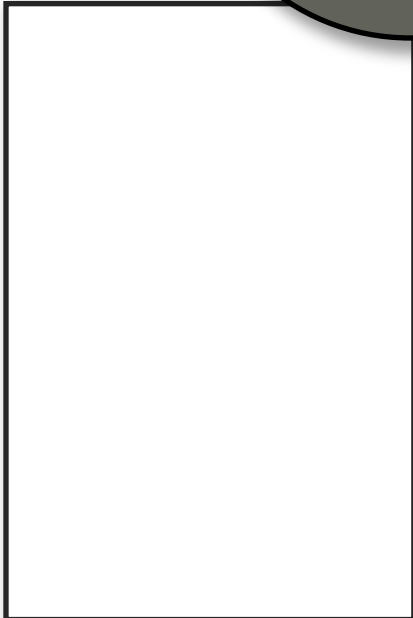


BRICK

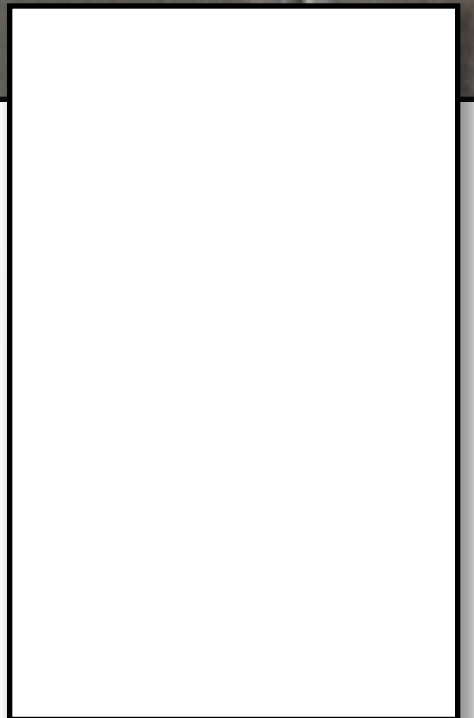
FRONT
DOOR

WINDOWS

GARAGE DOOR



ALUMINUM



INTERIOR FINISHES

128 Graydon Dr

KITCHEN BACKSPLASH



KITCHEN COUNTERTOPS



PAINT
COLOUR



MAIN
FLOOR TILE



HARDWOOD



HAYHOE™
HOMES

KITCHEN
CABINETRY

INTERIOR FINISHES

128 Graydon Dr

INTERIOR DOOR STYLE



CARPET



ENSUITE TUB SURROUND

MAIN BATH COUNTERTOPS



MAIN BATH CABINETY



ENSUITE COUNTERTOPS

ENSUITE CABINETY



ENSUITE FLOOR TILE

HAYHOE™
—HOMES—