

# INVENTORY HOME



## 128 GRAYDON DR.

MOUNT ELGIN MEADOW LANDS

### THE DETAILS

PRICE	\$ 899,900
CLOSING DATE	NOVEMBER 15, 2024
LOT NUMBER	57
BEDROOMS	4
BATHS	2.5
SQFT	2254
GARAGE	2
MODEL	WELLSHIRE

**HAYHOE™**  
— HOMES —



**SALES PROFESSIONAL**

JANELL HEYERMAN

519.842.2435

Janell.heyerman@hayhoehomes.com

# SITE PLAN

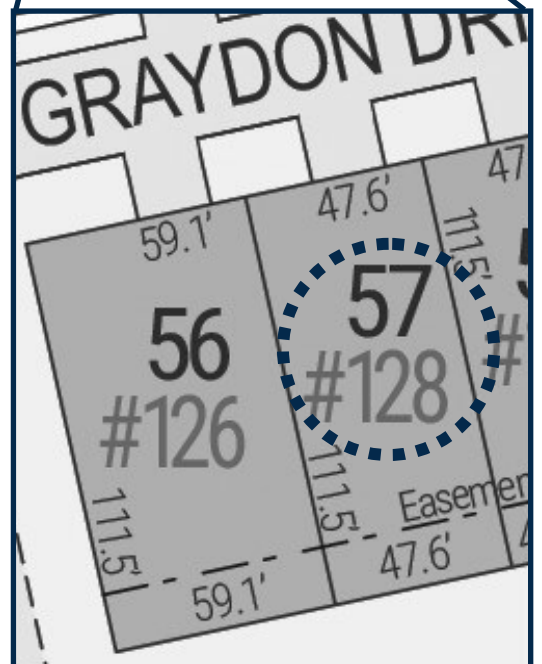


## 128 GRAYDON

### EXTERIOR FEATURES:

- KEYLESS ENTRY
- TREATED WOOD DECK
- BBQ GAS LINE
- ASPHALT DRIVEWAY
- WALKING TRAILS

**HAYHOE™**  
— HOMES —

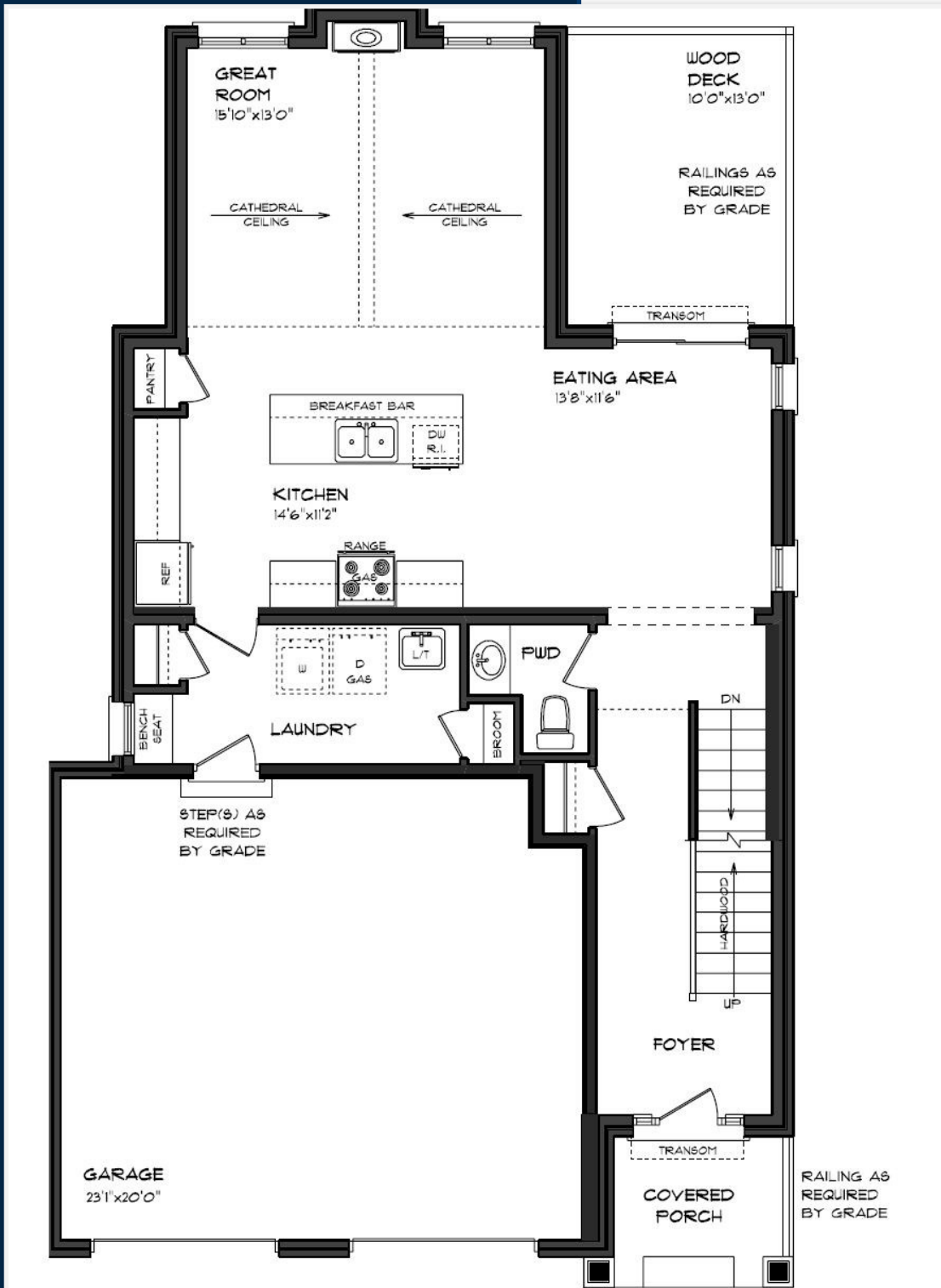


MOUNT ELGIN

**MEADOW  
LANDS**

# MAIN FLOOR

128 GRAYDON DR., MOUNT ELGIN



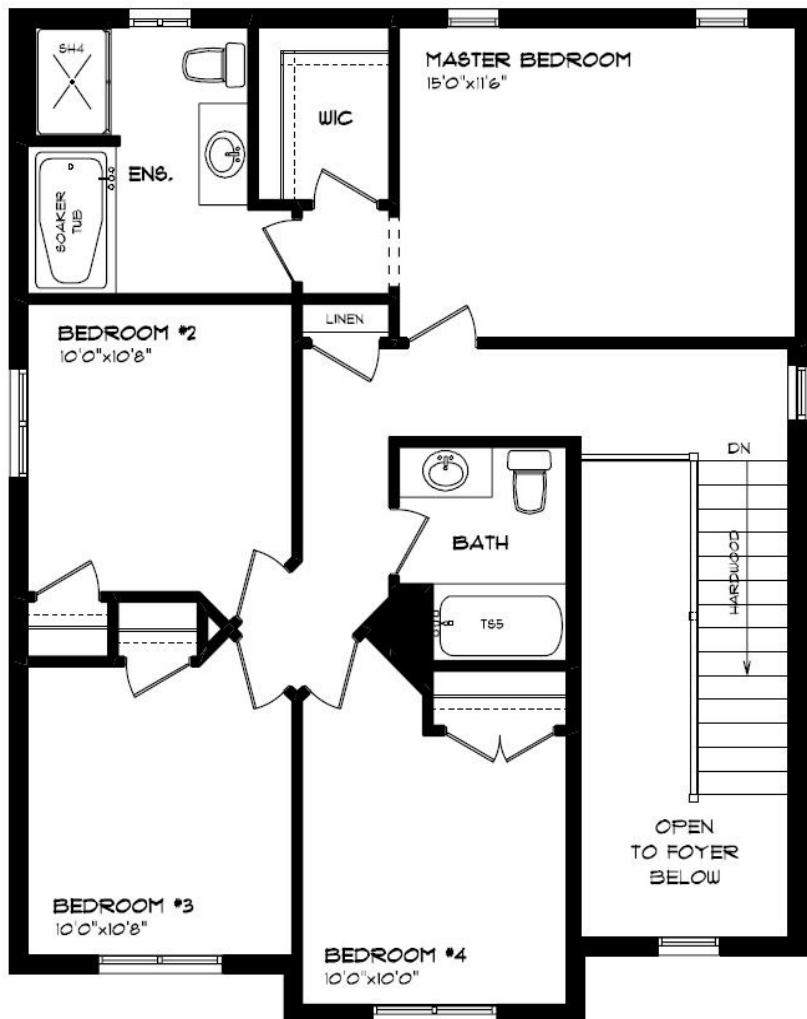
MAIN FLOOR LAUNDRY  
CUSTOM CABINETS & HOOD  
GAS FIREPLACE  
HARDWOOD FLOORING  
QUARTZ COUNTERTOPS  
KITCHEN BACKSPLASH

MAIN FLOOR:  
APPROX 963 SQFT

**HAYHOE**<sup>TM</sup>  
HOMES

# SECOND FLOOR

128 GRAYDON DR., MOUNT ELGIN



SOAKER TUB

CARPET FLOORING

TILED FLOORING

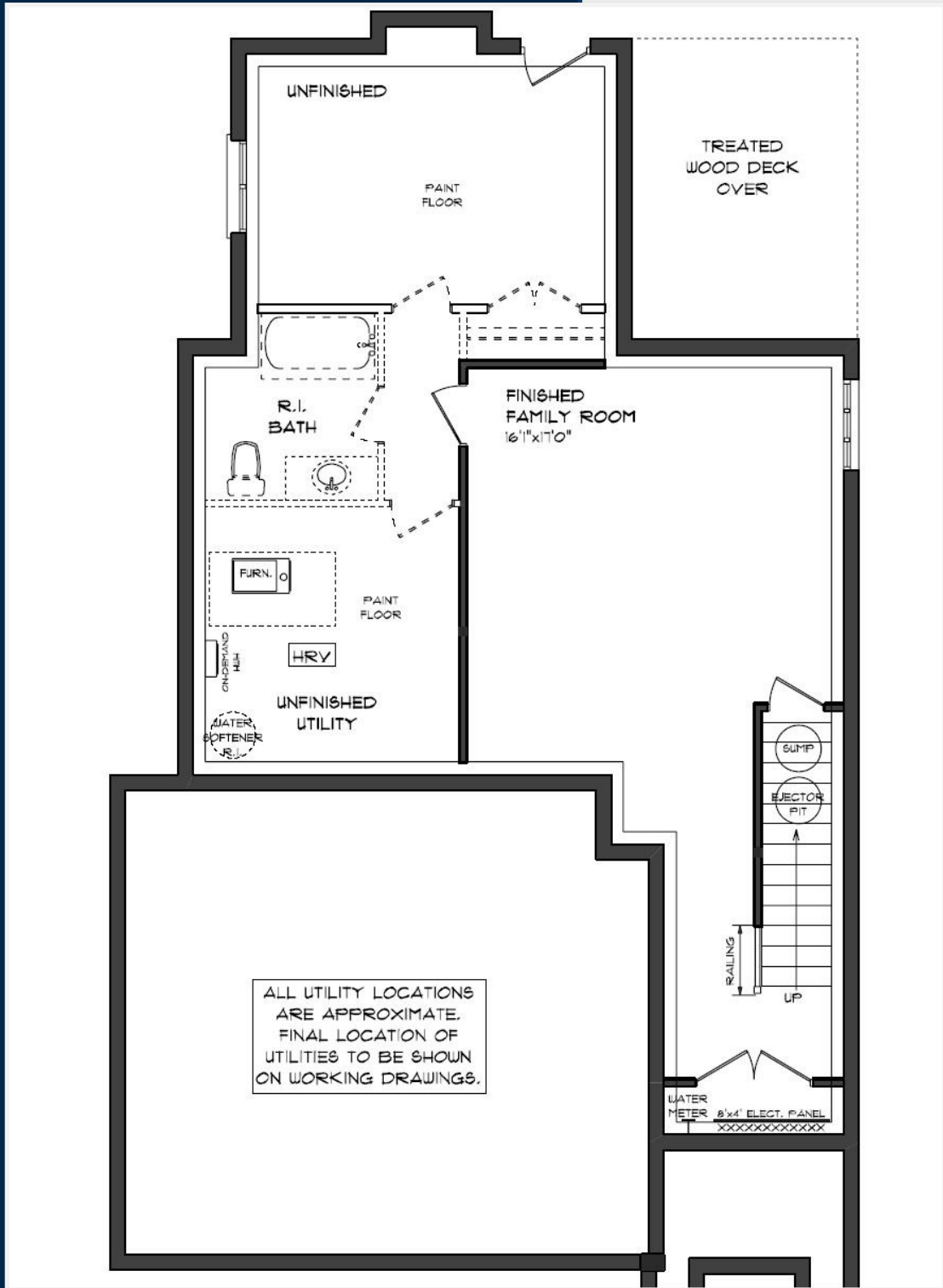
DECORATIVE LIGHTING

SECOND FLOOR:  
APPROX 915 SQFT

**HAYHOE™**  
— HOMES —

# BASEMENT

128 GRAYDON DR., MOUNT ELGIN



- AIR CONDITIONING
- CARPET FLOORING
- GAS FURNACE WITH HRV
- HUMIDIFIER
- NEW HOME WARRANTY

BASEMENT:  
APPROX. 376 SQFT

**HAYHOE™**  
— HOMES —



# EXTERIOR FINISHES

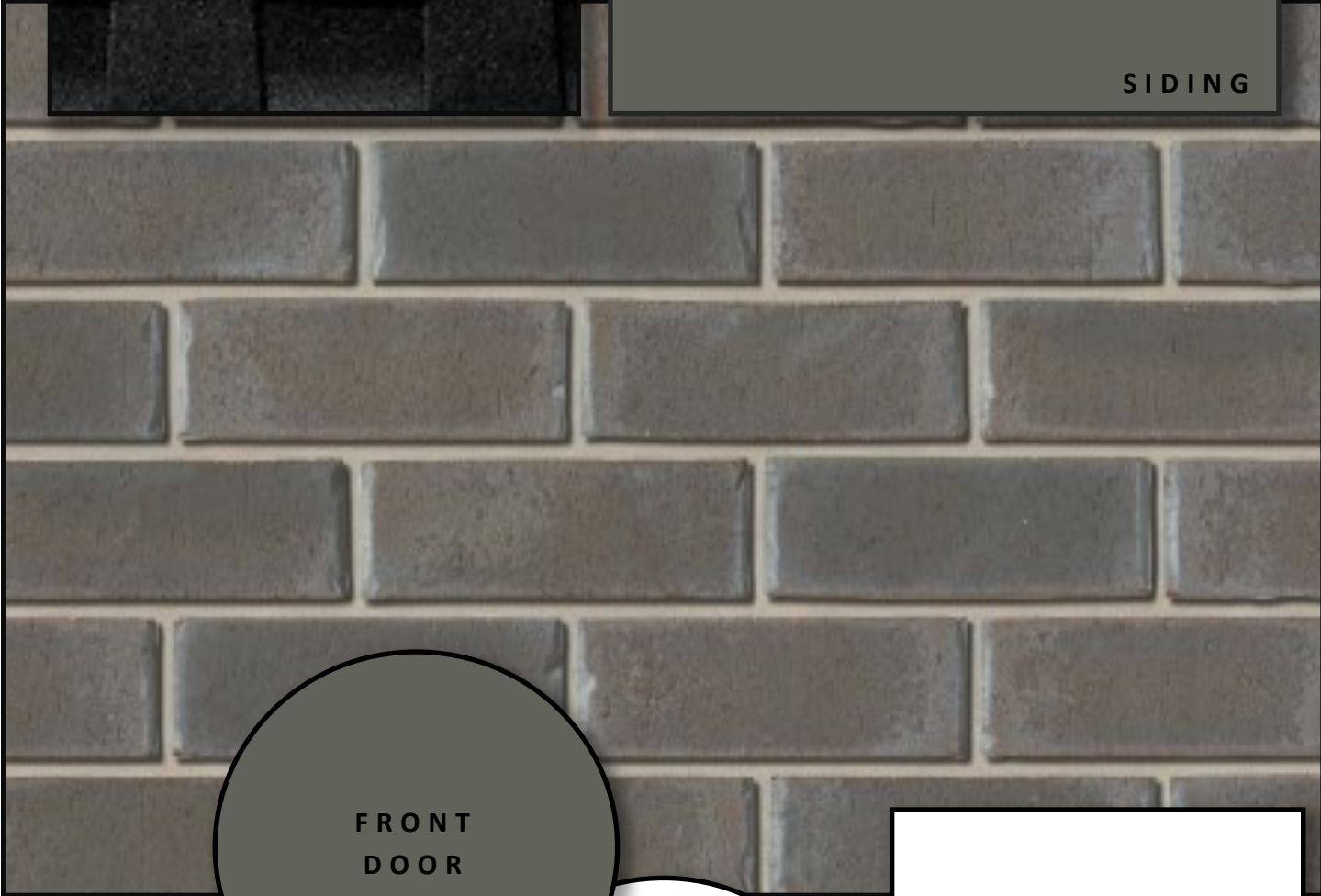
SHINGLES



128 GRAYDON DR



SIDING

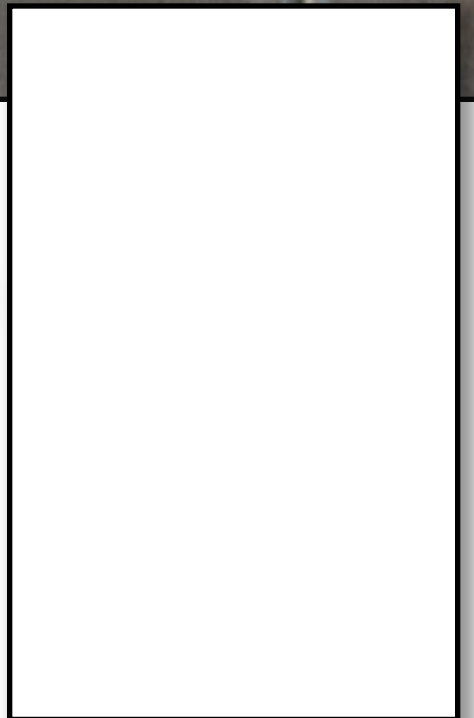
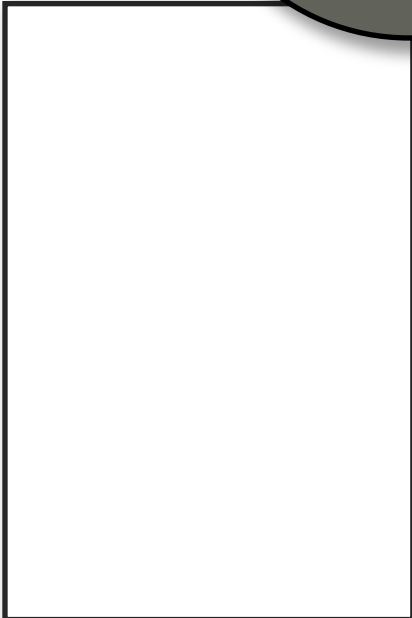


BRICK

FRONT  
DOOR

WINDOWS

GARAGE DOOR



ALUMINUM

**HAYHOE™**  
— HOMES —

# INTERIOR FINISHES

128 Graydon Dr

KITCHEN BACKSPLASH



KITCHEN COUNTERTOPS



PAINT  
COLOUR



MAIN  
FLOOR TILE



HARDWOOD



**HAYHOE™**  
HOMES

KITCHEN  
CABINETRY



# INTERIOR FINISHES

128 Graydon Dr

INTERIOR DOOR STYLE



CARPET



ENSUITE TUB SURROUND

MAIN BATH COUNTERTOPS



MAIN BATH CABINETRY



ENSUITE COUNTERTOPS



ENSUITE CABINETRY



ENSUITE FLOOR TILE

**HAYHOE™**  
— HOMES —