

# INVENTORY HOME



**130 GRAYDON DR.**

**MOUNT ELGIN MEADOW LANDS**

## THE DETAILS

PRICE	\$ 859,000
CLOSING DATE	AVAILABLE NOW
LOT NUMBER	58
BEDROOMS	3
BATHS	3
SQFT	1986
GARAGE	2
MODEL	ASHBROOK

**HAYHOE™**  
**— HOMES —**



**SALES PROFESSIONAL**

JANELL HEYERMAN

519.842.2435

[Janell.heyerman@hayhoehomes.com](mailto:Janell.heyerman@hayhoehomes.com)

# SITE PLAN

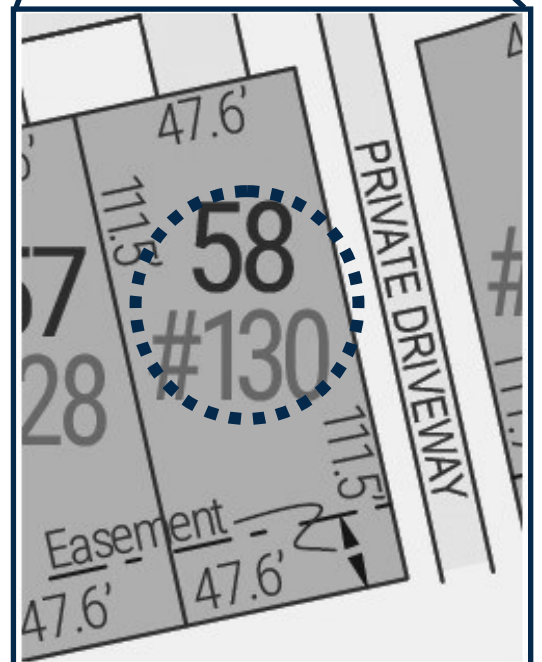


## 130 GRAYDON

### EXTERIOR FEATURES:

- KEYLESS ENTRY
- TREATED WOOD DECK
- BBQ GAS LINE
- ASPHALT DRIVEWAY
- WALKING TRAILS

**HAYHOE™**  
HOMES

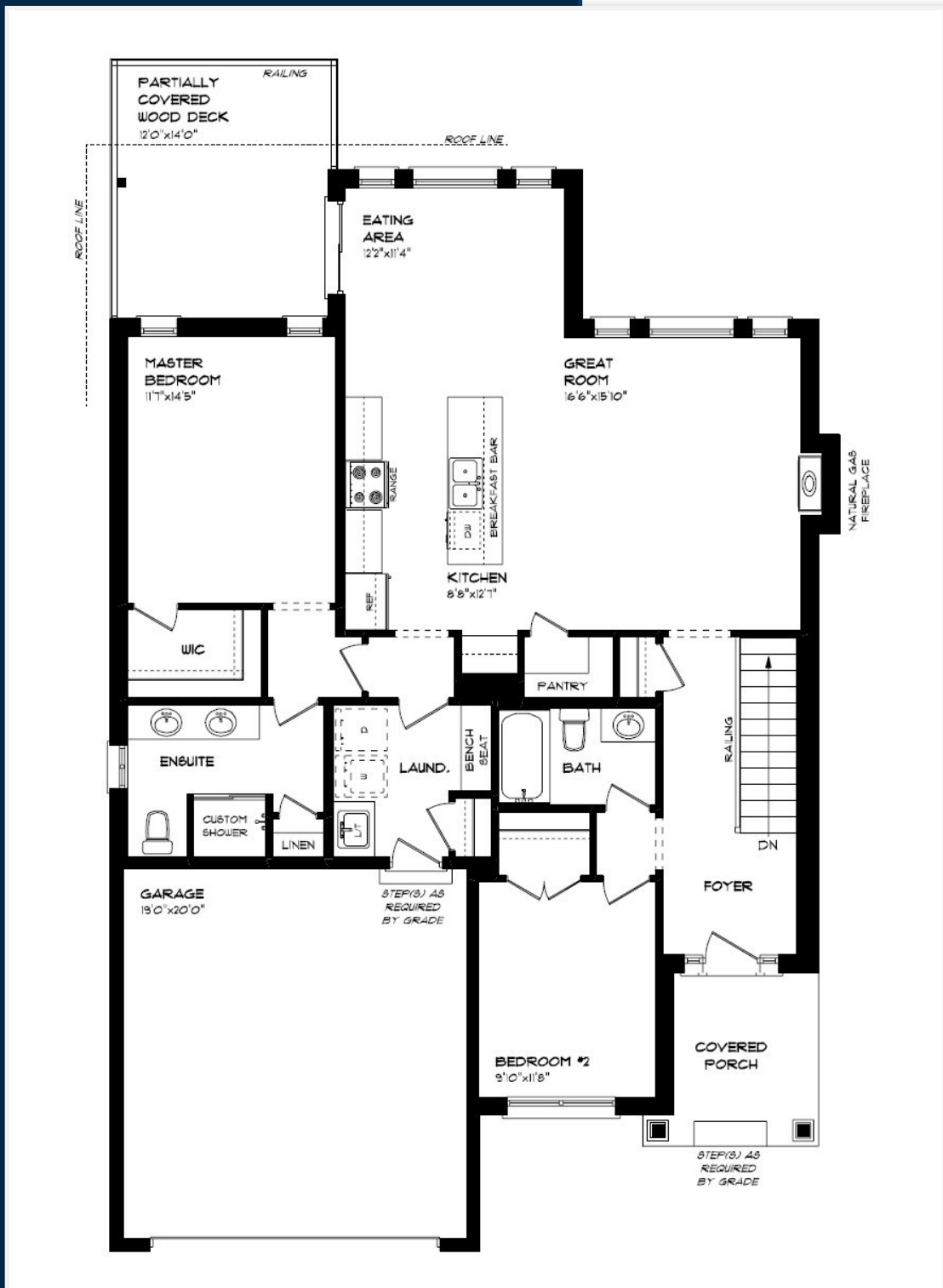


MOUNT ELGIN

MEADOW  
LANDS

# MAIN FLOOR

130 GRAYDON DR., MOUNT ELGIN



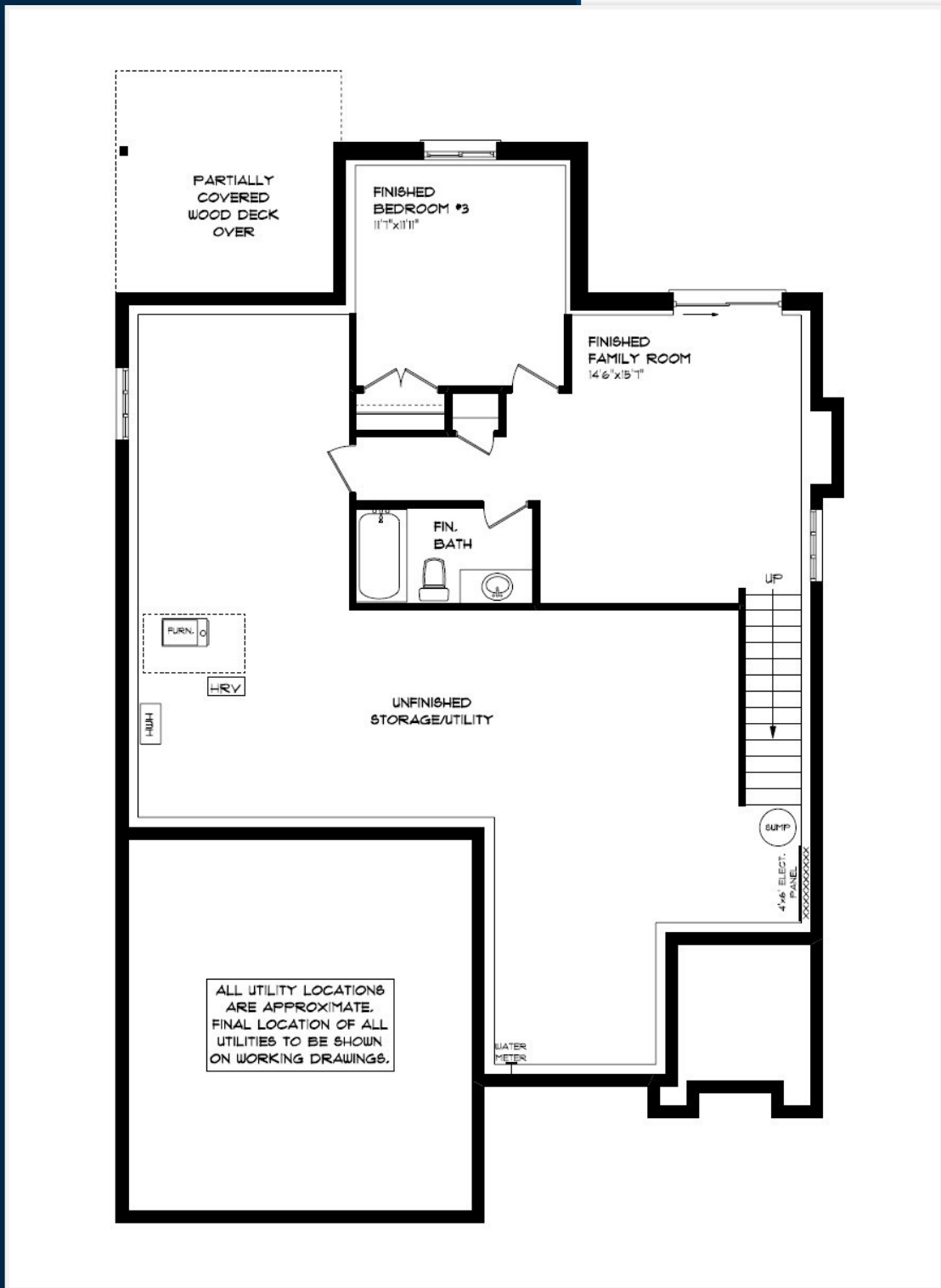
MAIN FLOOR LAUNDRY  
CUSTOM CABINETS & HOOD  
CUSTOM SHOWER  
GAS FIREPLACE  
HARDWOOD FLOORING  
QUARTZ COUNTERTOPS  
KITCHEN BACKSPLASH

MAIN FLOOR:  
APPROX 1465 SQFT

**HAYHOE**<sup>TM</sup>  
— HOMES —

# BASEMENT

130 GRAYDON DR., MOUNT ELGIN



- CARPET FLOORING
- TILED FLOORING
- AIR CONDITIONING
- GAS FURNACE WITH HRV
- HUMIDIFIER
- NEW HOME WARRANTY

BASEMENT:  
APPROX 521 SQFT

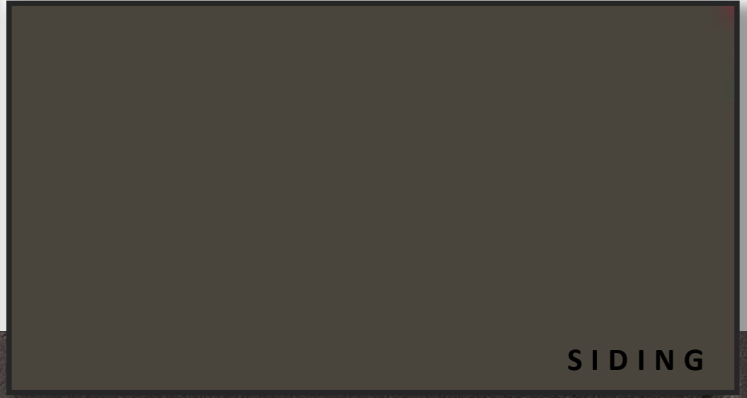
**HAYHOE**<sup>TM</sup>  
— HOMES —

# EXTERIOR FINISHES

SHINGLES



130 GRAYDON DR

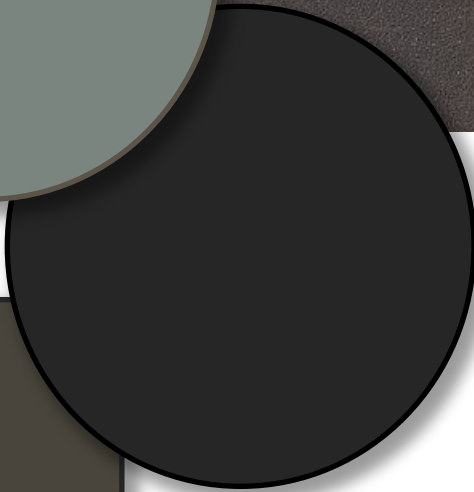


SIDING



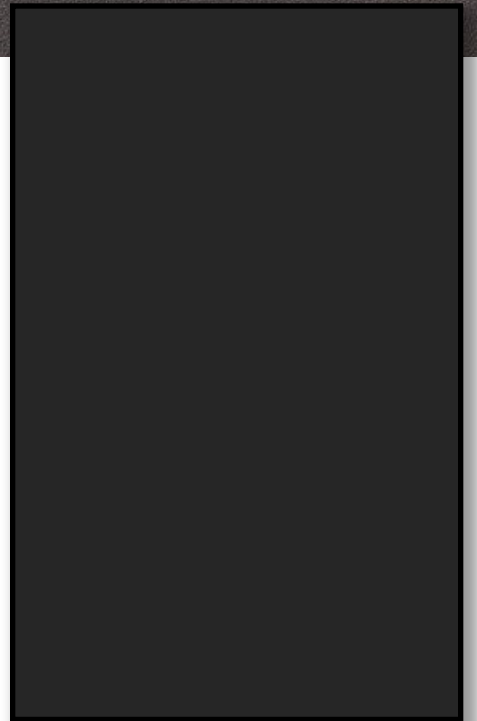
FRONT  
DOOR

BRICK



WINDOWS

GARAGE DOOR



ALUMINUM



# INTERIOR FINISHES

KITCHEN BACKSPLASH



130 GRAYDON DR



KITCHEN COUNTERTOPS



HARDWOOD



MAIN FLOOR TILE



KITCHEN CABNETRY

**HAYHOE™**  
-HOMES-

# INTERIOR FINISHES

## 130 GRAYDON DR

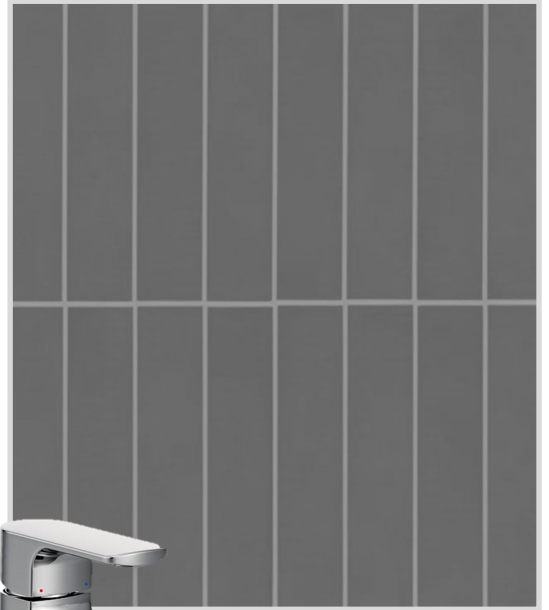
INTERIOR DOOR STYLE



CARPET



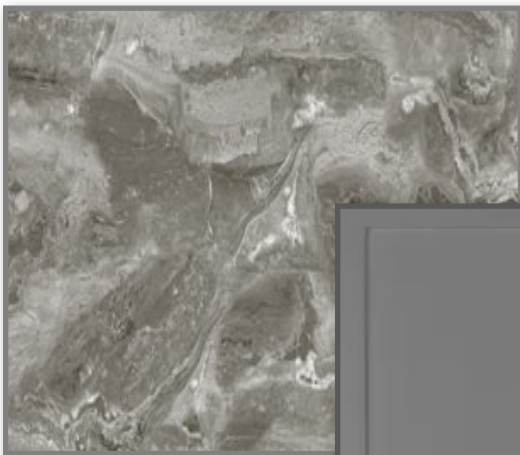
ENSUITE SHOWER TILE



ENSUITE COUNTERTOPS



MAIN BATH COUNTERTOP



ENSUITE CABINETS



MAIN BATH CABINETS



ENSUITE FLOOR TILE



MAIN BATH FLOOR TILE

