

# INVENTORY HOME



## 134 GRAYDON DRIVE

MOUNT ELGIN MEADOW LANDS

### THE DETAILS

PRICE	\$ 839,000
CLOSING DATE	AVAILABLE NOW
LOT NUMBER	59
BEDROOMS	4
BATHS	3
SQFT	2167
GARAGE	2
MODEL	TRENTWOOD

**HAYHOE™**  
— HOMES —



**SALES PROFESSIONAL**

JANELL HEYERMAN

519.842.2435

[Janell.heyerman@hayhoehomes.com](mailto:Janell.heyerman@hayhoehomes.com)

# SITE PLAN

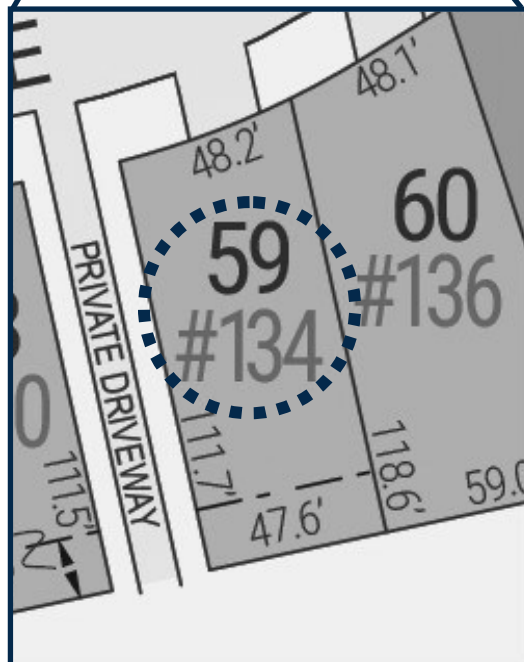


## 134 GRAYDON

### EXTERIOR FEATURES:

- KEYLESS ENTRY
- TREATED WOOD DECK
- BBQ GAS LINE
- ASPHALT DRIVEWAY
- WALKING TRAILS

**HAYHOE™**  
— HOMES —

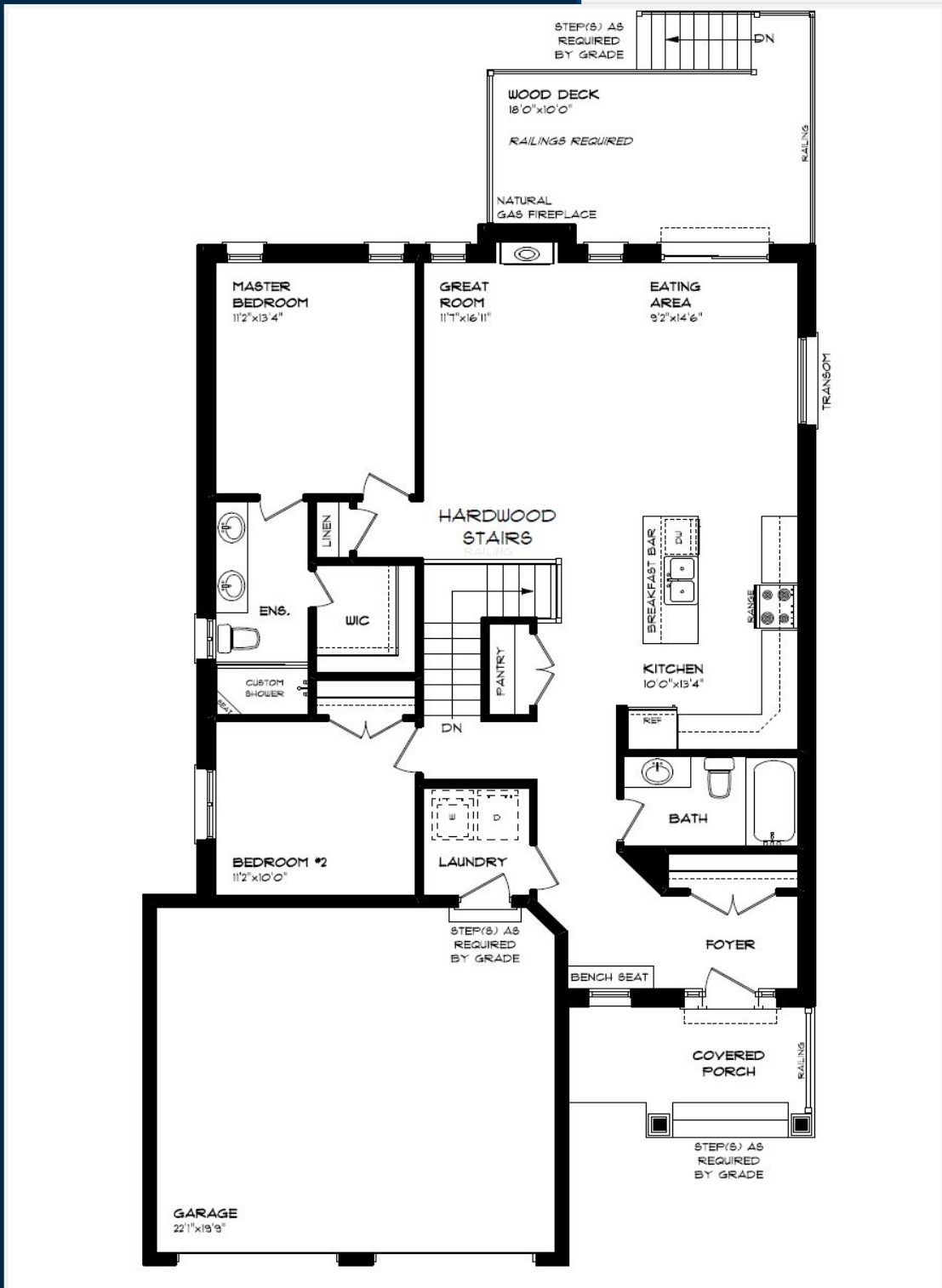


MOUNT ELGIN

**MEADOW  
LANDS**

# MAIN FLOOR

134 GRAYDON DR., MOUNT ELGIN



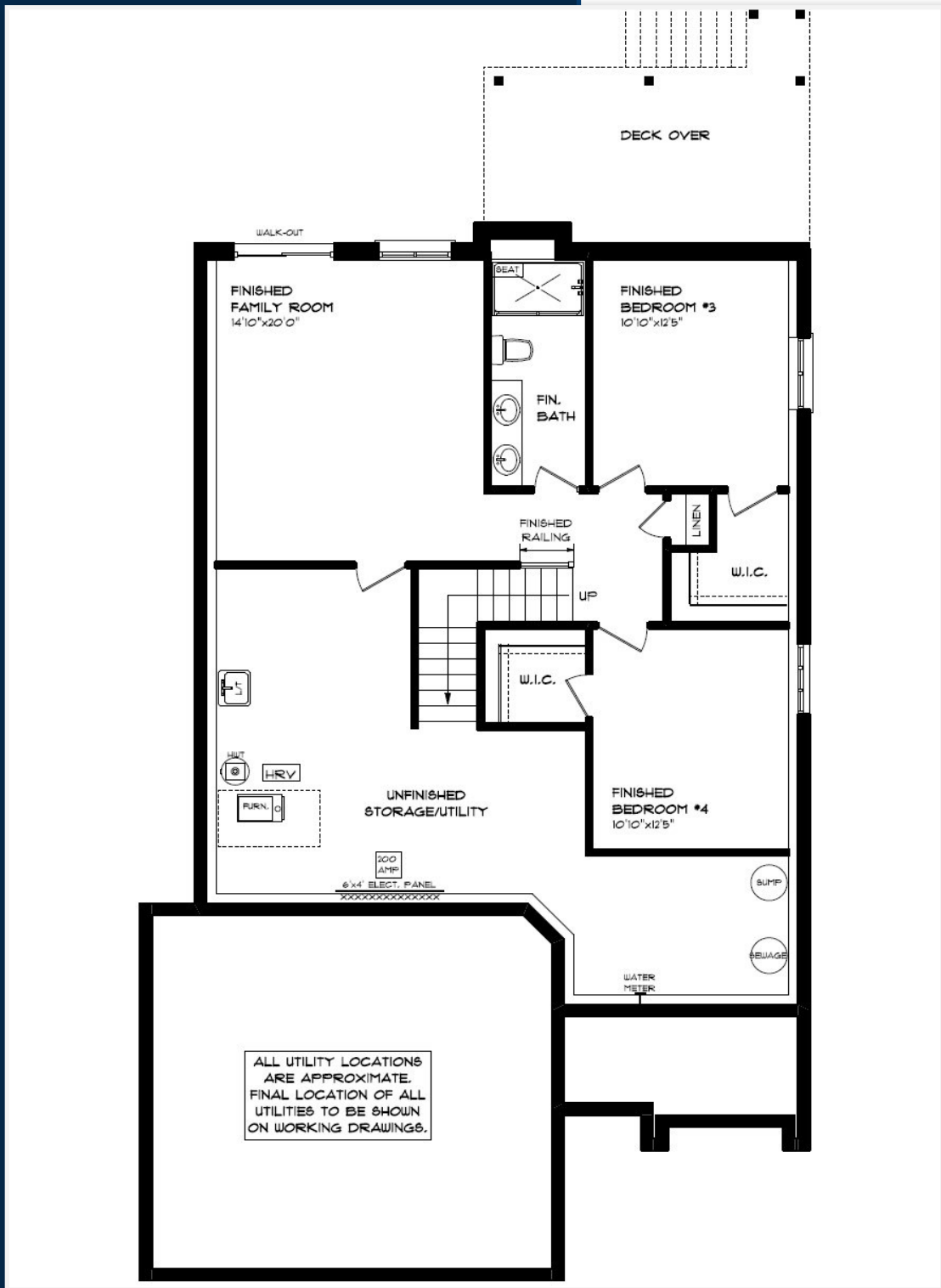
MAIN FLOOR LAUNDRY  
 CUSTOM CABINETRY & HOOD  
 CUSTOM SHOWER  
 GAS FIREPLACE  
 HARDWOOD FLOORING  
 QUARTZ COUNTERTOPS  
 KITCHEN BACKSPLASH

MAIN FLOOR:  
 APPROX 1361 SQFT

**HAYHOE™**  
**— HOMES —**

# BASEMENT

134 GRAYDON DR., MOUNT ELGIN



- CARPET FLOORING
- AIR CONDITIONING
- GAS FURNACE WITH HRV
- HUMIDIFIER
- NEW HOME WARRANTY

BASEMENT:  
APPROX 806 SQFT

**HAYHOE**<sup>TM</sup>  
— HOMES —

# EXTERIOR FINISHES

SHINGLES



134 GRAYDON DR



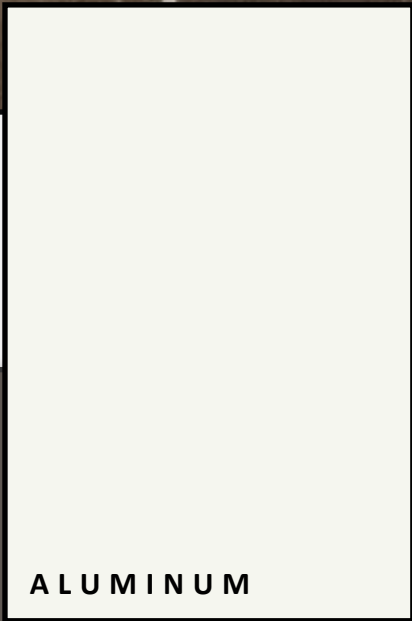
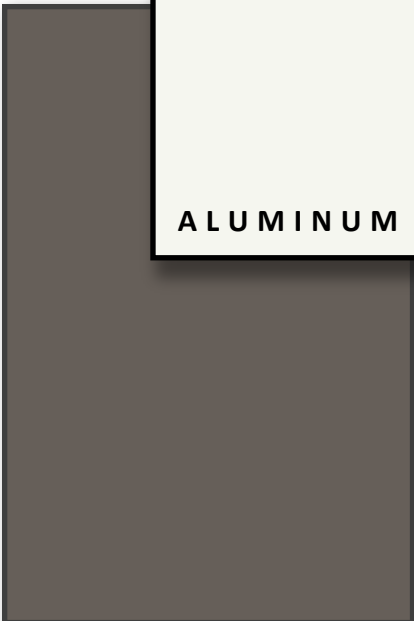
SIDING

BRICK

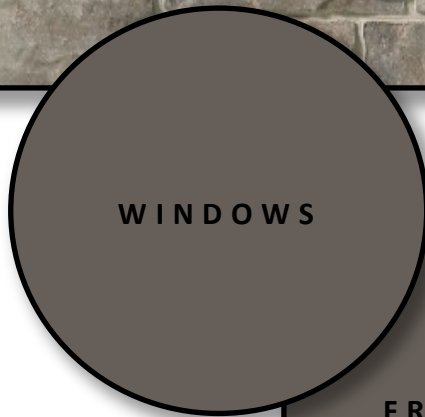


STONE

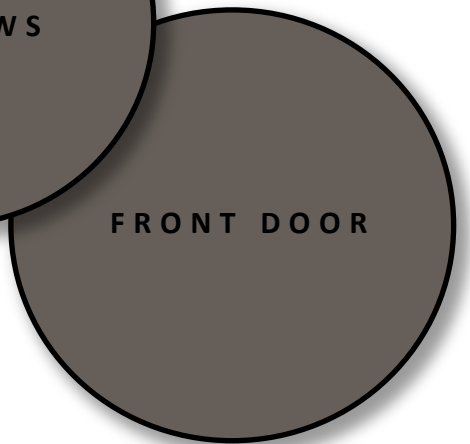
GARAGE DOOR



ALUMINUM



WINDOWS



FRONT DOOR



# INTERIOR FINISHES

134 GRAYDON DR.

KITCHEN BACKSPLASH



KITCHEN COUNTERTOPS

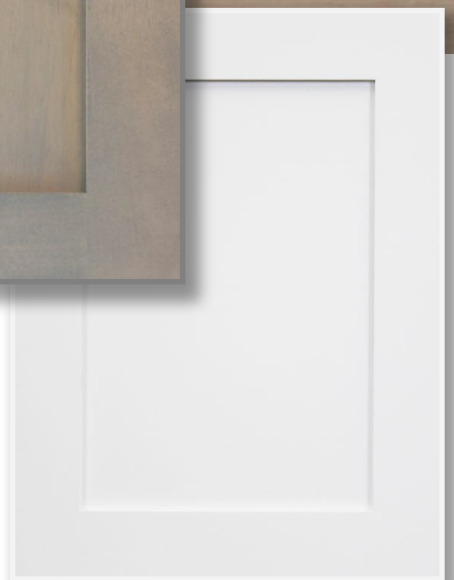


HARDWOOD

PAINT  
COLOUR



KITCHEN  
ISLAND



KITCHEN  
CABINETRY

MAIN FLOOR TILE



**HAYHOE™**  
HOMES

# INTERIOR FINISHES

134 GRAYDON DR.

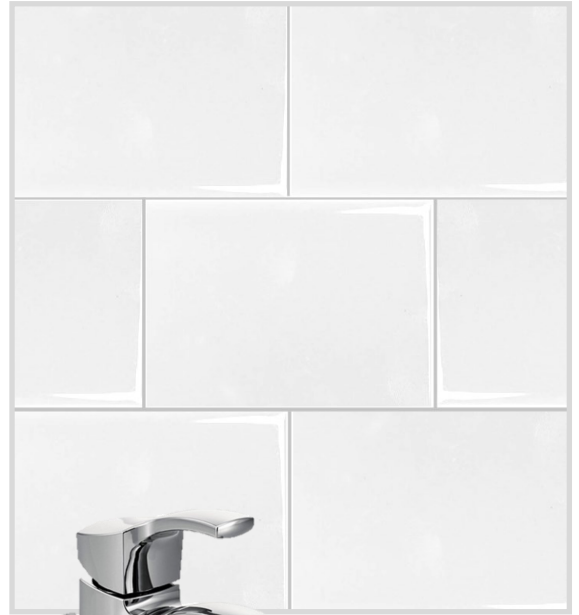
INTERIOR DOOR STYLE



CARPET



ENSUITE SHOWER TILE



ENSUITE COUNTERTOPS



MAIN BATH COUNTERTOP



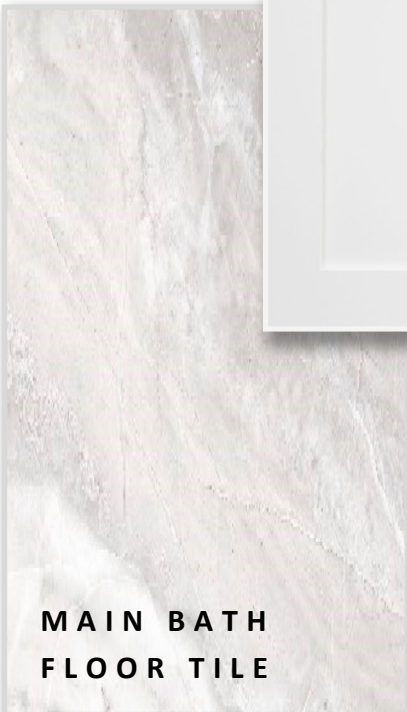
ENSUITE CABINETRY



MAIN BATH CABINETRY



MAIN BATH FLOOR TILE



ENSUITE FLOOR TILE



**HAYHOE™**  
— HOMES —