

# INVENTORY HOME



## 11 DUNNING WAY

ORCHARD PARK MEADOWS, ST. THOMAS

### THE DETAILS

PRICE	\$ 795,000
CLOSING DATE	FEB 13, 2025
LOT NUMBER	6
BEDROOMS	2
BATHS	2
SQFT	1733
GARAGE	2
MODEL	SHARPTON

**HAYHOE™**  
—HOMES—



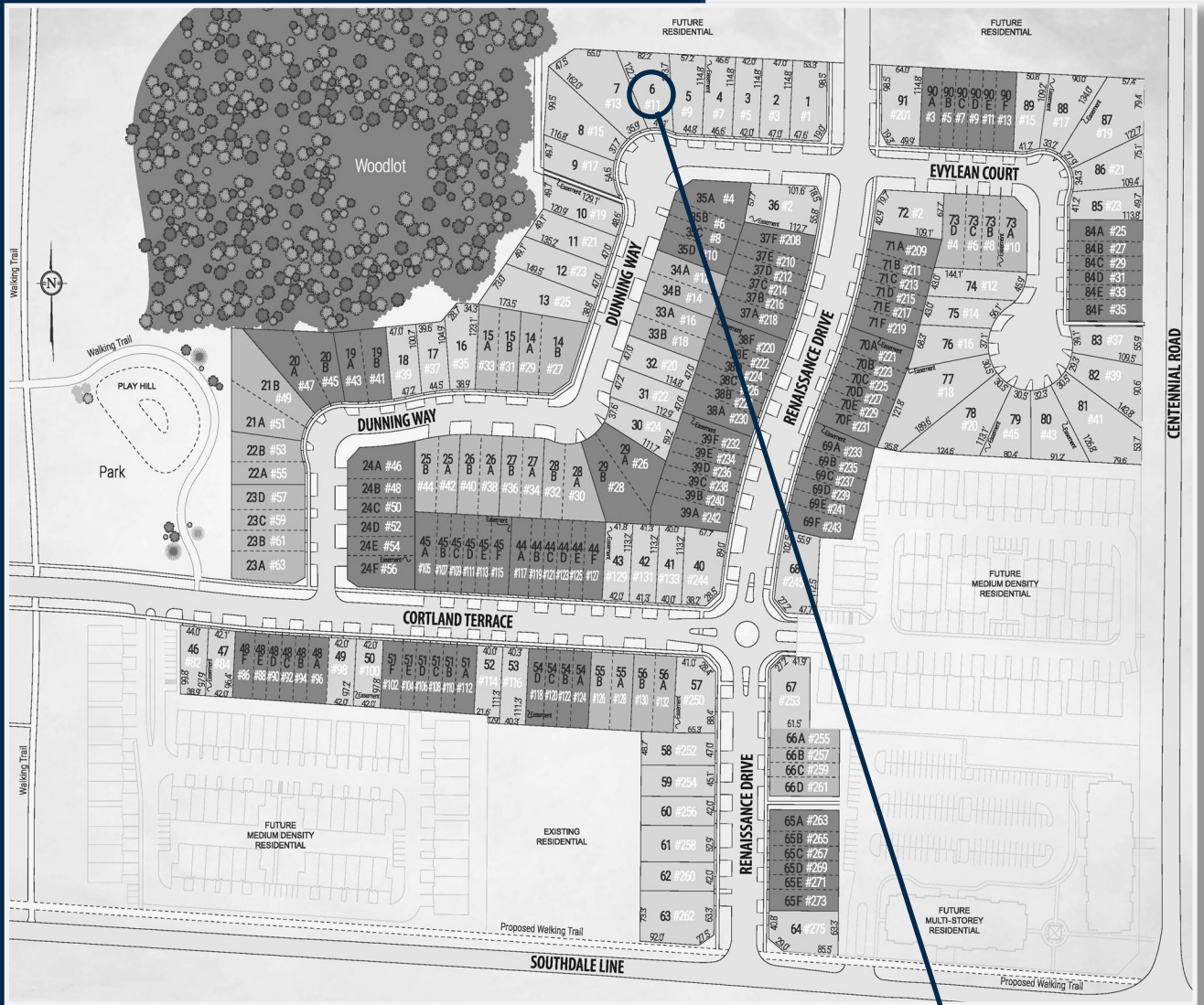
### SALES PROFESSIONAL

DAVE MATTHEWS

519.633.9215

dave.matthews@hayhoehomes.com

# SITE PLAN

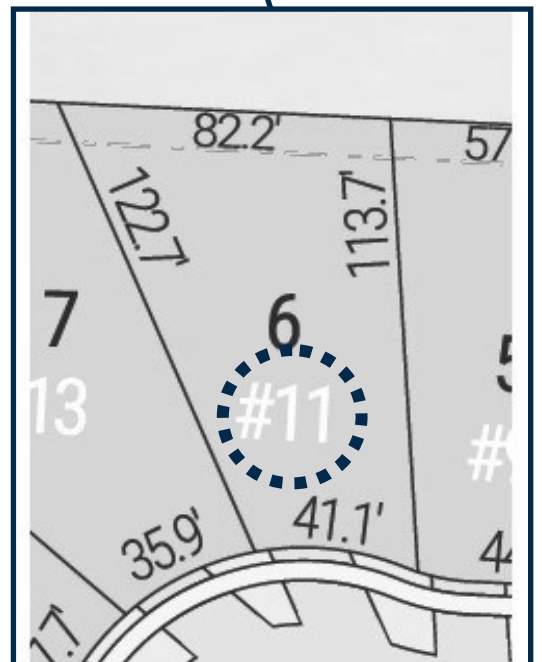


**11 DUNNING**

**EXTERIOR FEATURES:**

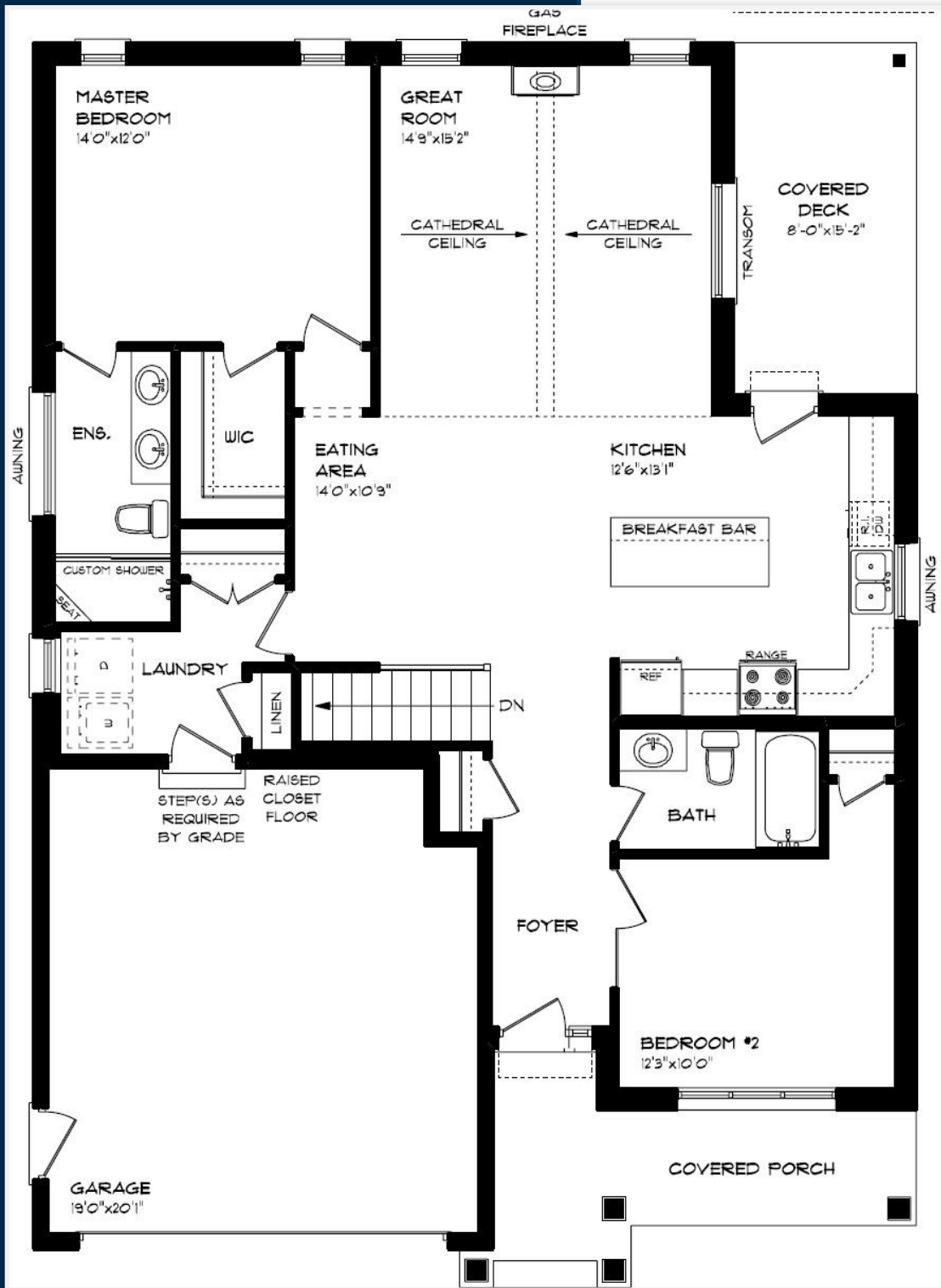
- KEYLESS ENTRY
- TREATED WOOD DECK
- BBQ GAS LINE
- ASPHALT DRIVEWAY
- WALKING TRAILS

**HAYHOE™  
HOMES**



# MAIN FLOOR

11 DUNNING WAY, ST. THOMAS



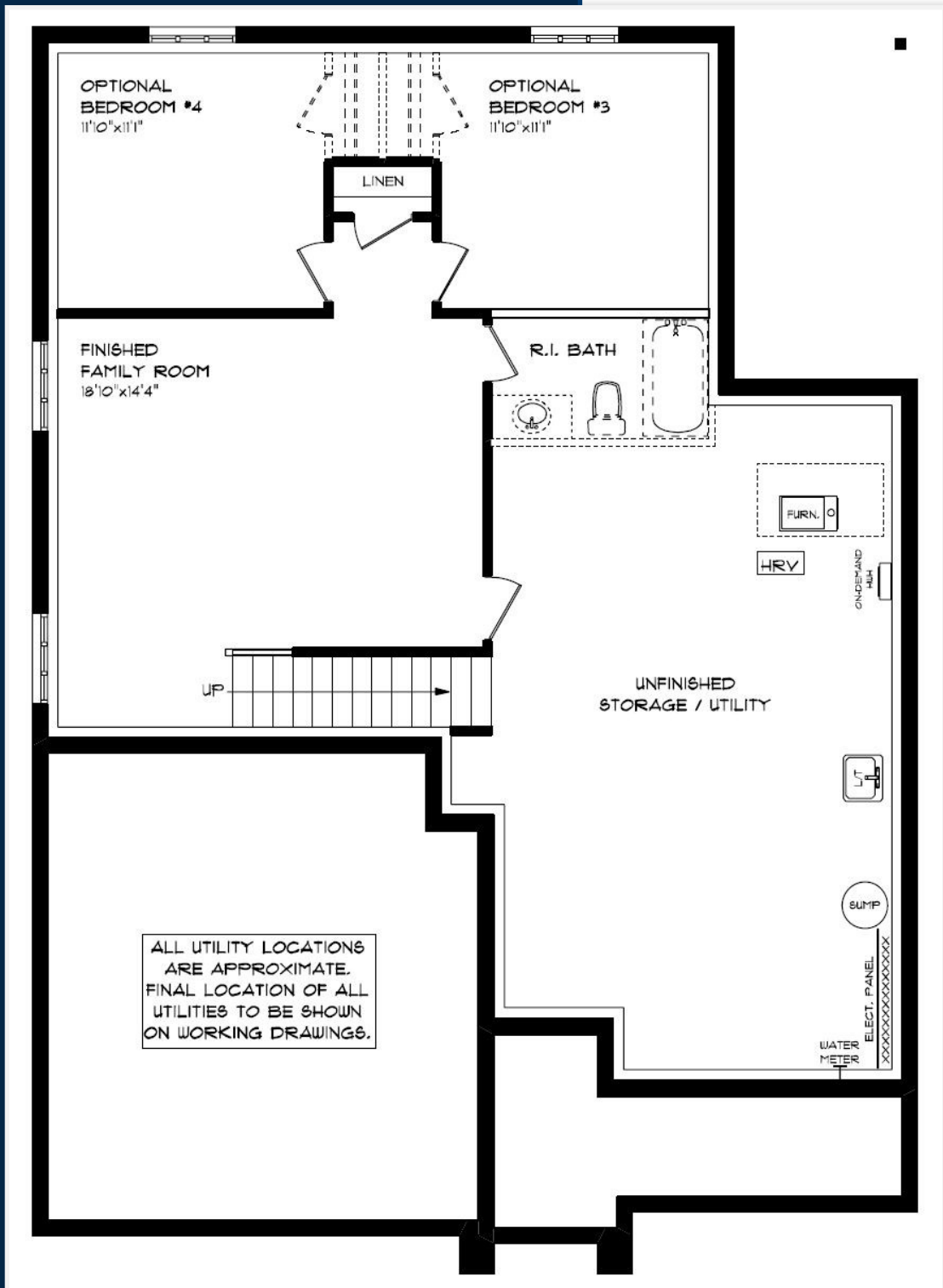
- DOUBLE CAR GARAGE
- KITCHEN ISLAND
- HARDWOOD FLOORING
- QUARTZ COUNTERTOPS
- KITCHEN BACKSPLASH
- CUSTOM TILE SHOWER

MAIN FLOOR:  
APPROX 1378 SQFT

**HAYHOE™**  
— HOMES —

# BASEMENT

11 DUNNING WAY, ST. THOMAS



FINISHED FAMILY ROOM  
AIR CONDITIONING  
GAS FURNACE WITH HRV  
FLOW- THROUGH HUMIDIFIER  
NEW HOME WARRANTY

BASEMENT:  
APPROX 355 SQFT

**HAYHOE™**  
— HOMES —

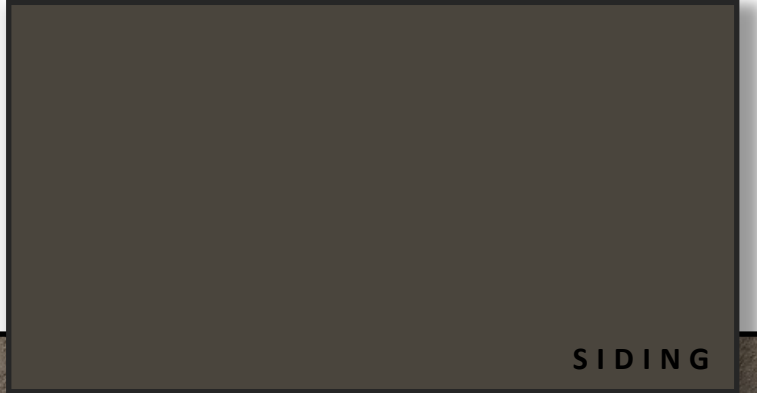


# EXTERIOR FINISHES

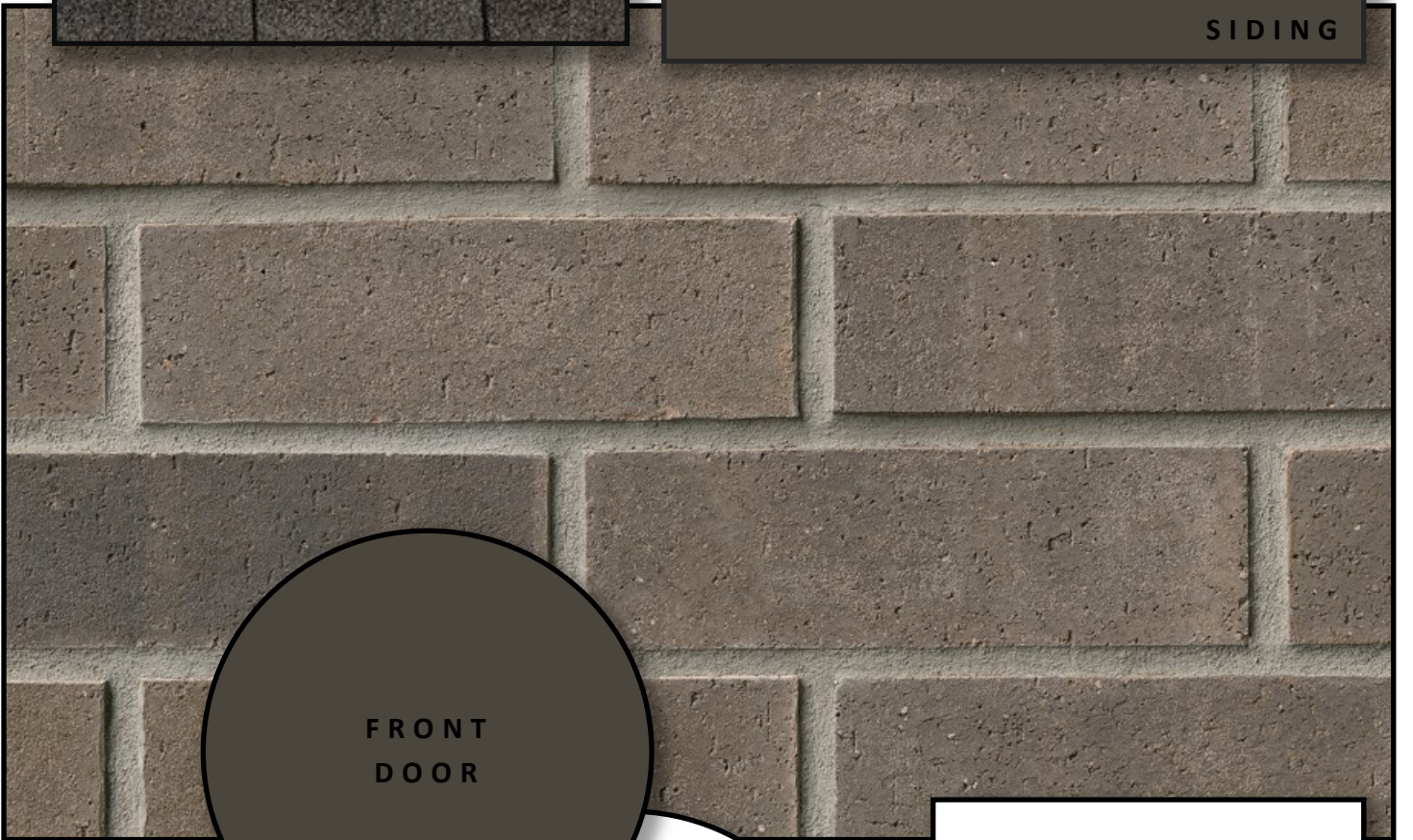
SHINGLES



11 Dunning Way



SIDING

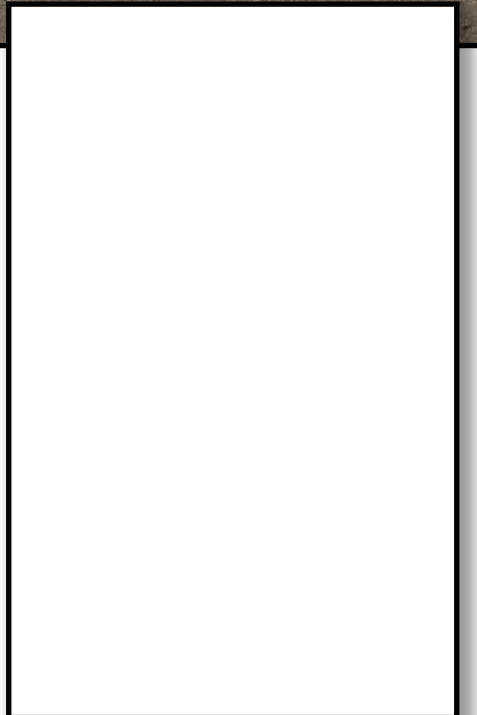
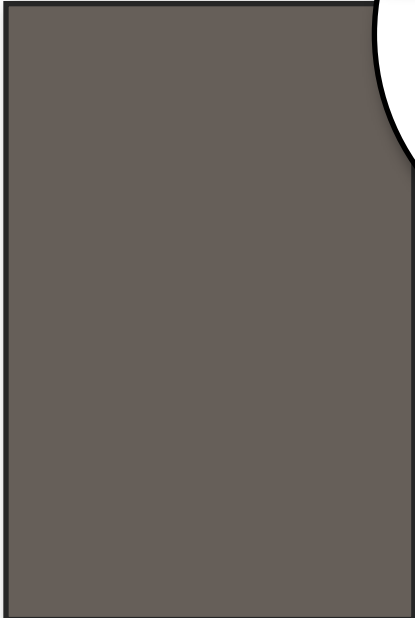


FRONT  
DOOR

BRICK

WINDOWS

GARAGE DOOR



ALUMINUM



# INTERIOR FINISHES

11 Dunning Way

KITCHEN BACKSPLASH



QUARTZ KITCHEN  
COUNTERTOPS



HARDWOOD

PAINT  
COLOUR



MAIN  
FLOOR TILE



PAINTED KITCHEN  
CABINTRY

**HAYHOE™**  
HOMES

PRICE, PRODUCTS, COLOURS & FEATURES ARE SUBJECT TO

CHANGE WITHOUT NOTICE.

CREATED JUNE 26, 2024



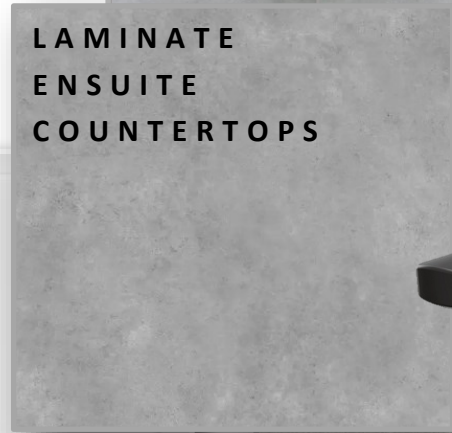
# INTERIOR FINISHES

## 11 Dunning Way

INTERIOR DOOR STYLE



ENSUITE SHOWER TILE



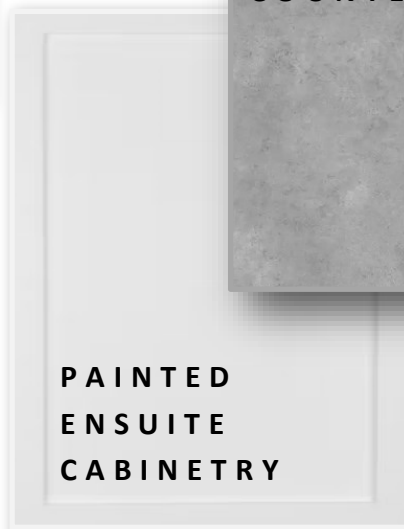
LAMINATE  
ENSUITE  
COUNTERTOPS



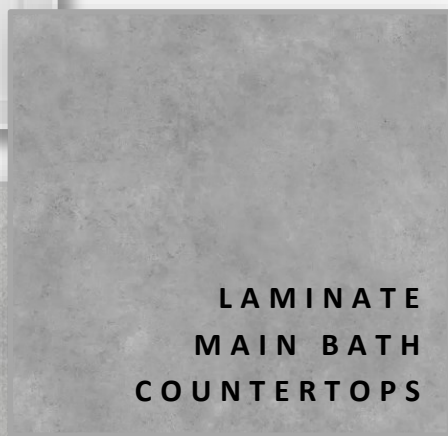
ENSUITE  
FLOOR TILE



PAINTED  
MAIN BATH  
CABINETRY



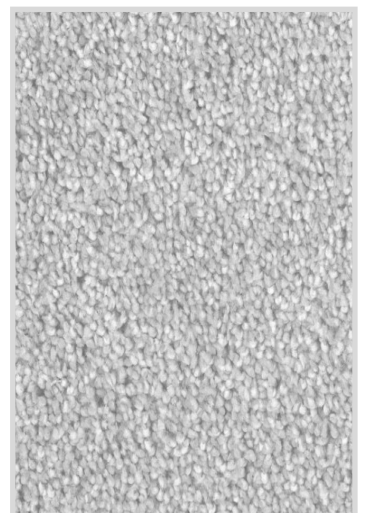
PAINTED  
ENSUITE  
CABINETRY



LAMINATE  
MAIN BATH  
COUNTERTOPS



MAIN BATH  
FLOOR TILE



CARPET

