

T O W N H O M E



233 RENAISSANCE DR

ORCHARD PARK MEADOWS, ST. THOMAS

THE DETAILS

PRICE	\$ 580,000
CLOSING DATE	AUGUST 11, 2025
LOT NUMBER	69A
BEDROOMS	3
BATHS	2.5
SQFT	1623
GARAGE	1
MODEL	2 STOREY TOWN

HAYHOE™
— HOMES —



SALES PROFESSIONAL

DAVE MATTHEWS

519.633.9215

dave.matthews@hayhoehomes.com

SITE PLAN

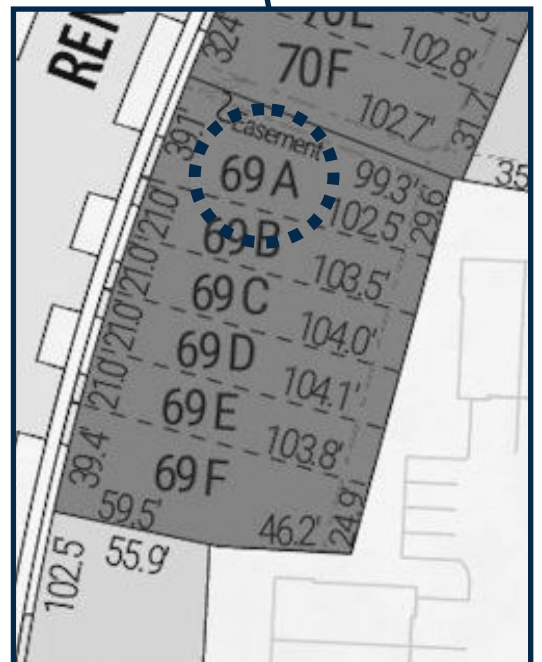


233 RENAISSANCE

EXTERIOR FEATURES:

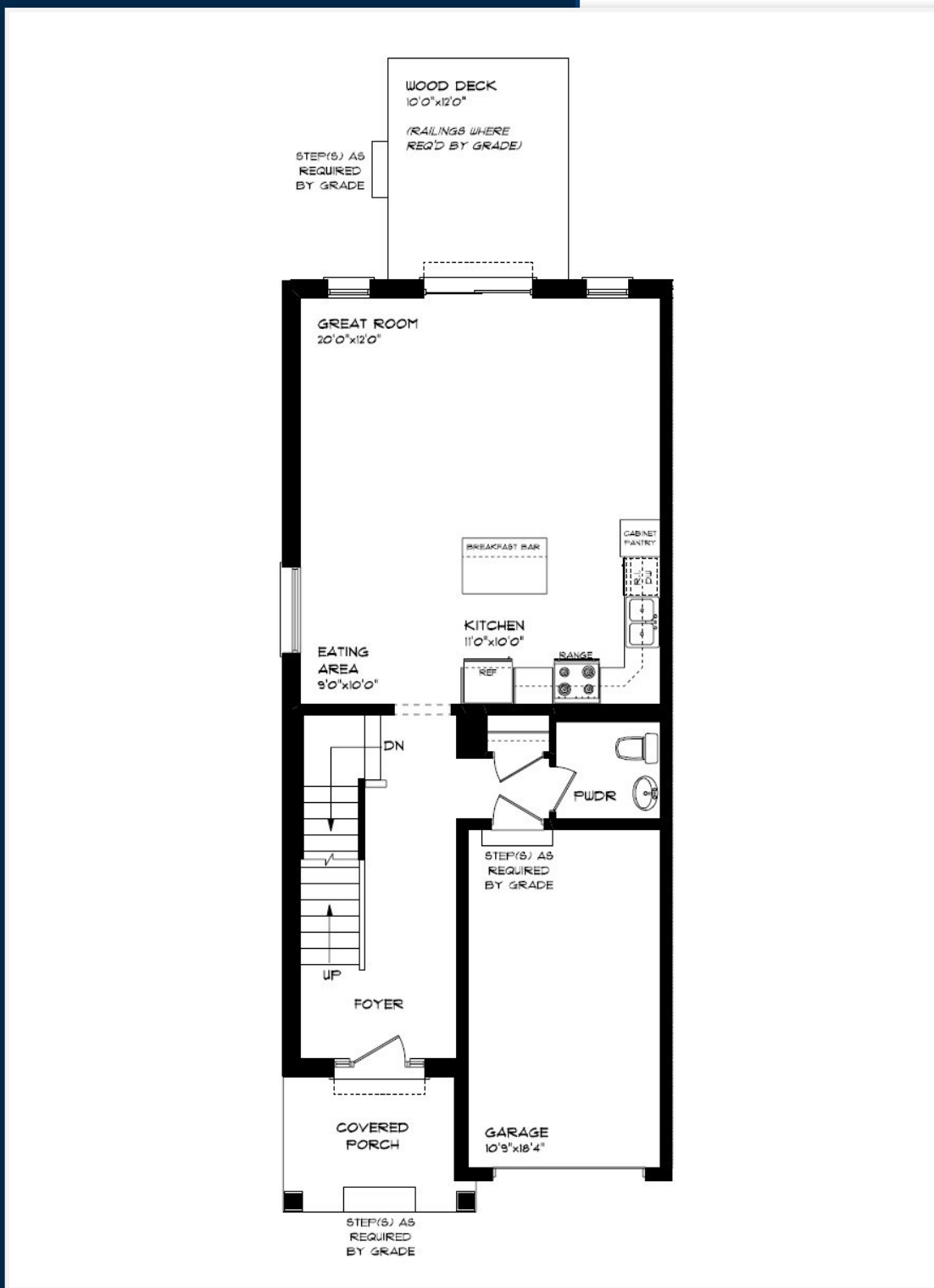
- KEYLESS ENTRY
- TREATED WOOD DECK
- ASPHALT DRIVEWAY
- WALKING TRAILS

HAYHOE™
HOMES



MAIN FLOOR

233 RENAISSANCE DR, ST. THOMAS



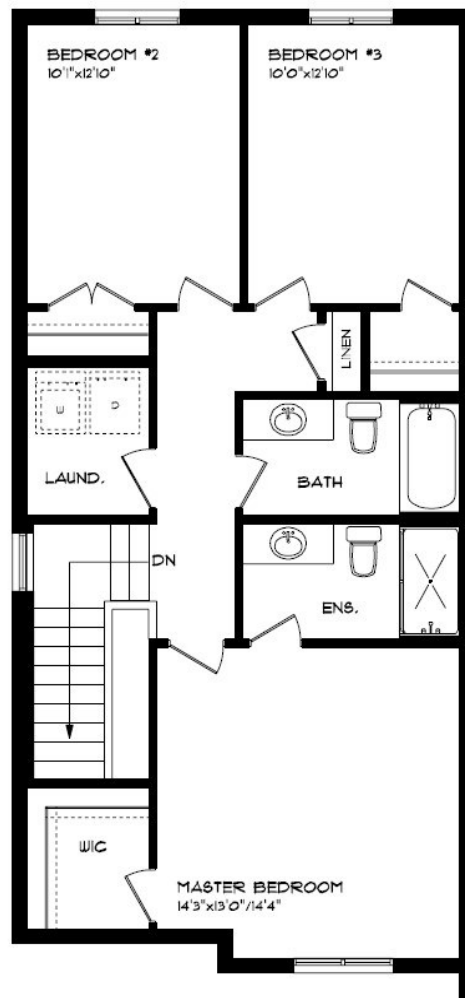
MAIN FLOOR:
APPROX 768 SQFT

- SINGLE CAR GARAGE
- KITCHEN ISLAND
- VINYL PLANK FLOORING
- QUARTZ COUNTERTOPS



SECOND FLOOR

233 RENAISSANCE DR, ST. THOMAS



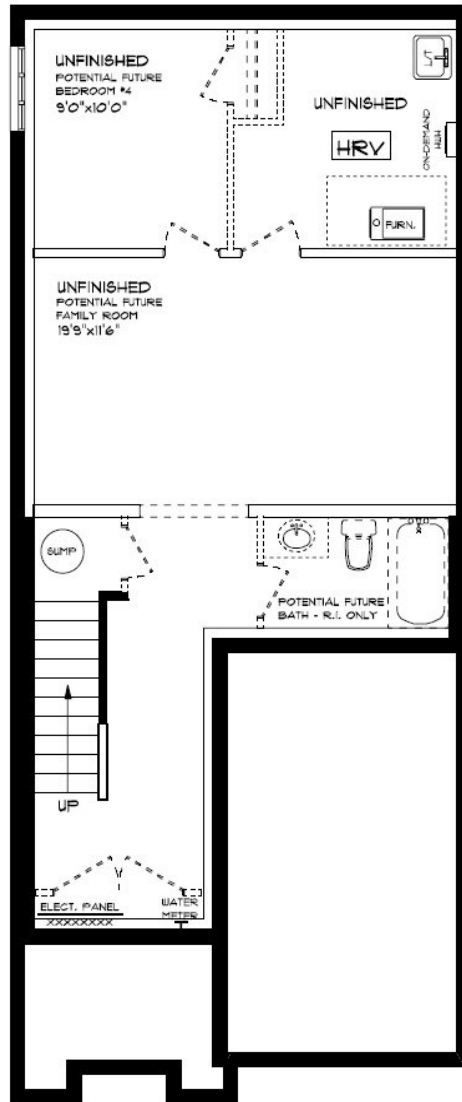
SECOND FLOOR:
APPROX 855 SQFT

SECOND FLOOR LAUNDRY
PROFESSIONALLY DESIGNED
CARPET FLOORING
VINYL PLANK FLOORING
WALK-IN CLOSET

HAYHOE™
—HOMES—

BASEMENT

233 RENAISSANCE DR, ST. THOMAS



BASEMENT:
UNFINISHED

- AIR CONDITIONING
- GAS FURNACE WITH HRV
- HUMIDIFIER
- NEW HOME WARRANTY

HAYHOETM
— HOMES —

INTERIOR FINISHES

233 RENAISSANCE



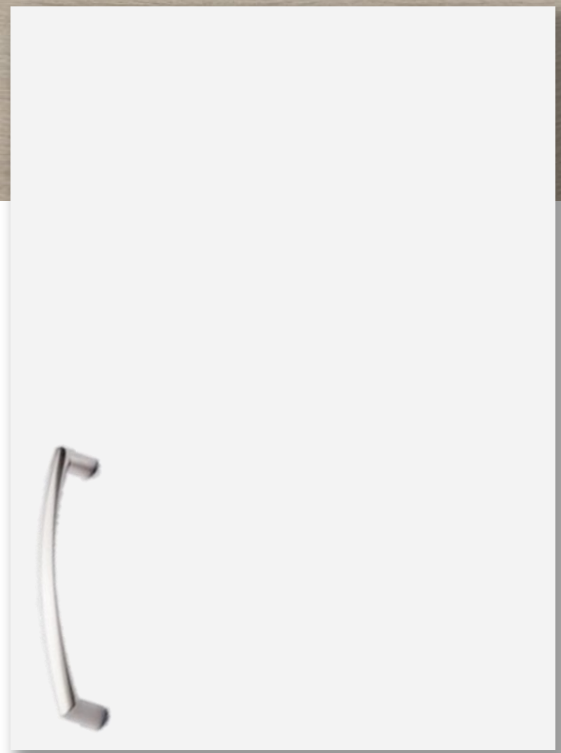
KITCHEN COUNTERTOPS



LUXURY VINYL PLANK



PAINT
COLOUR



KITCHEN
CABINETS

ISLAND PENDANTS



FOYER
FIXTURE



HAYHOE™
— HOMES —

INTERIOR FINISHES

233 RENAISSANCE

INTERIOR DOOR STYLE

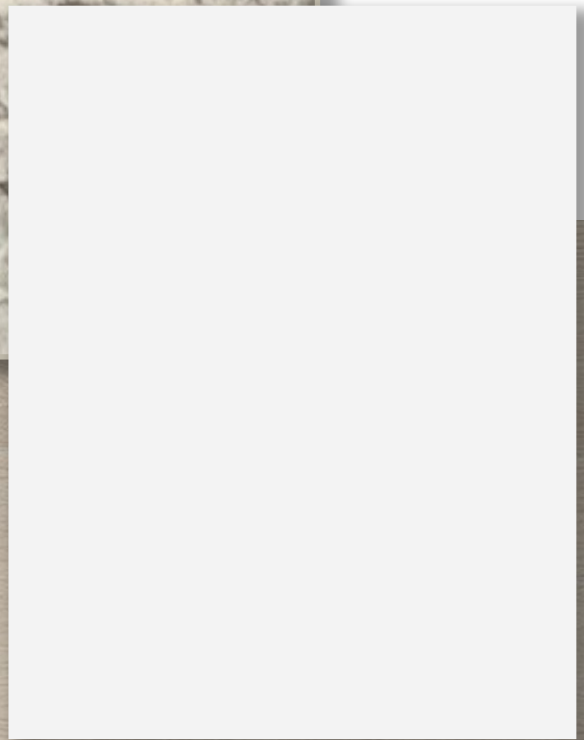
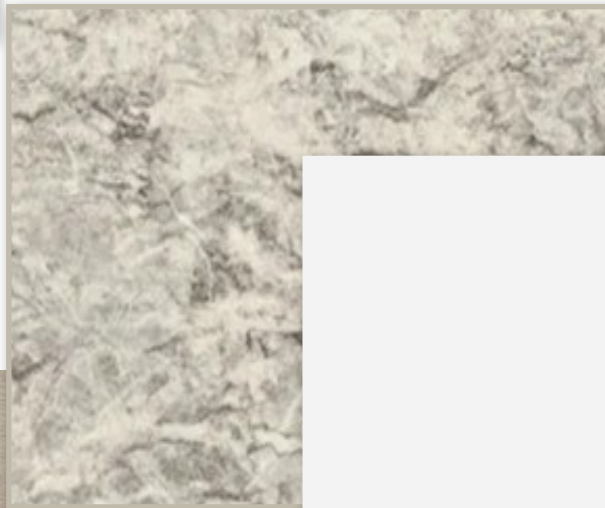


CARPET

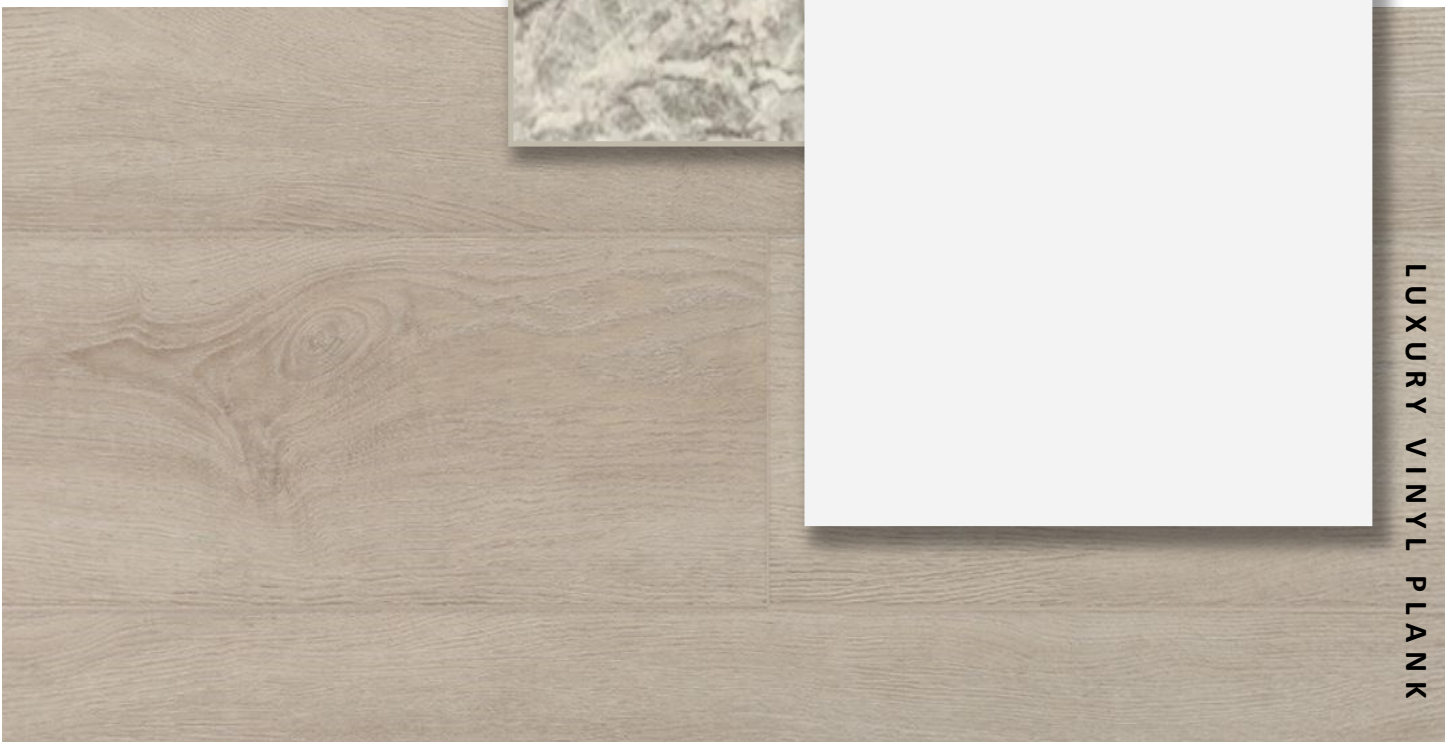


BATHROOM
COUNTERTOP

BATHROOM
CABINETS



LUXURY VINYL PLANK



PRICE, PRODUCTS, COLOURS & FEATURES ARE SUBJECT TO CHANGE WITHOUT NOTICE.
COLOURS SHOWN MAY VARY FROM INSTALLED MATERIALS. E & O.E

CREATED DEC 20, 2024