

T O W N H O M E

ESSENTIAL FEATURES



237 RENAISSANCE DR

ORCHARD PARK MEADOWS, ST. THOMAS

THE DETAILS

PRICE	\$ 555,000
CLOSING DATE	AUGUST 13, 2025
LOT NUMBER	69C
BEDROOMS	3
BATHS	2.5
SQFT	1615
GARAGE	1
MODEL	2 STOREY TOWN

HAYHOE™
HOMES



SALES PROFESSIONAL

DAVE MATTHEWS

519.633.9215

dave.matthews@hayhoehomes.com

SITE PLAN

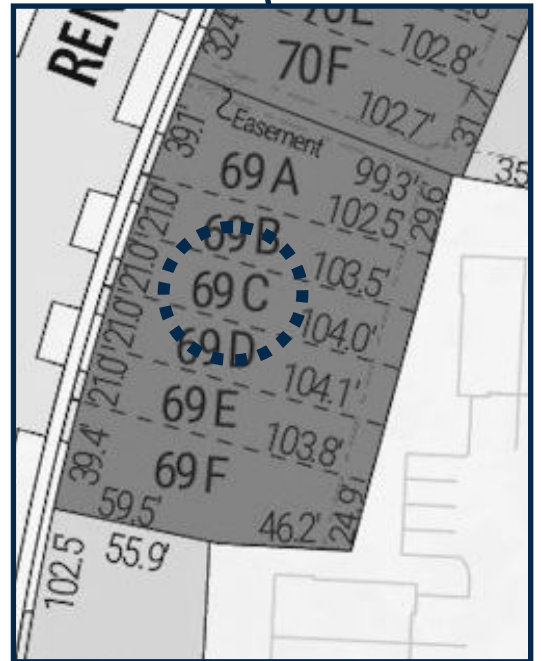


237 RENAISSANCE

EXTERIOR FEATURES:

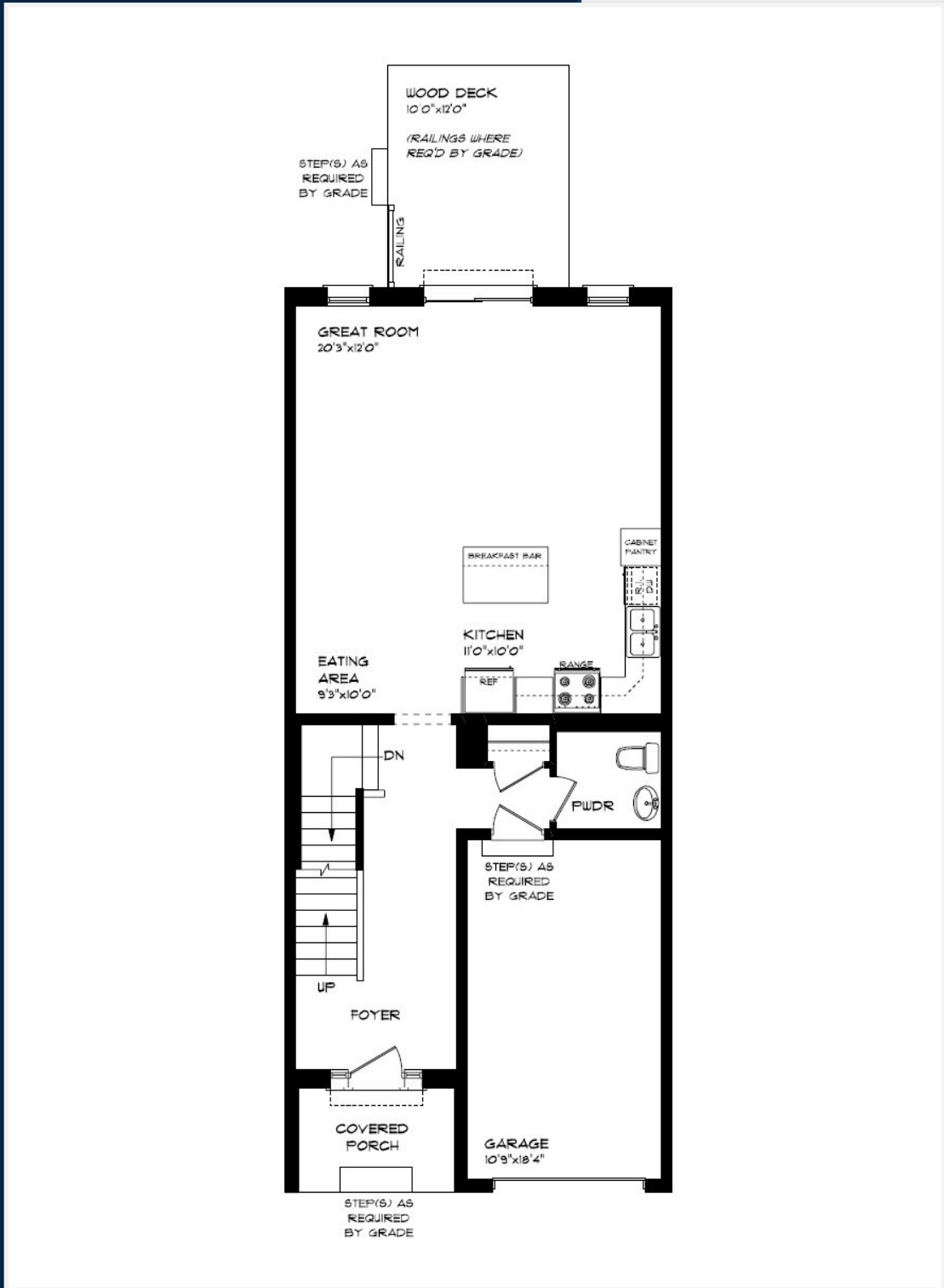
- KEYLESS ENTRY
- TREATED WOOD DECK
- ASPHALT DRIVEWAY
- WALKING TRAILS

HAYHOE™
HOMES



MAIN FLOOR

237 RENAISSANCE DR, ST. THOMAS



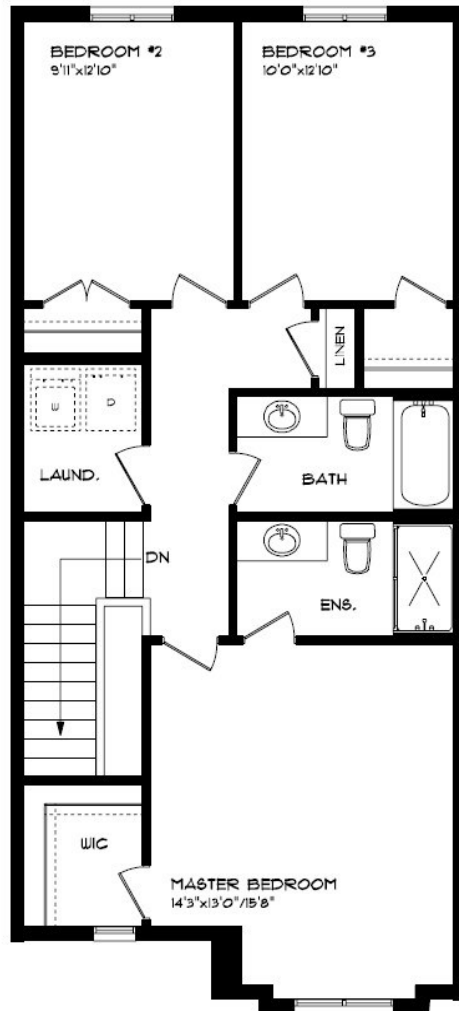
MAIN FLOOR:
APPROX 755 SQFT

- SINGLE CAR GARAGE
- KITCHEN ISLAND
- VINYL PLANK FLOORING
- QUARTZ COUNTERTOPS

HAYHOETM
— HOMES —

SECOND FLOOR

237 RENAISSANCE DR, ST. THOMAS



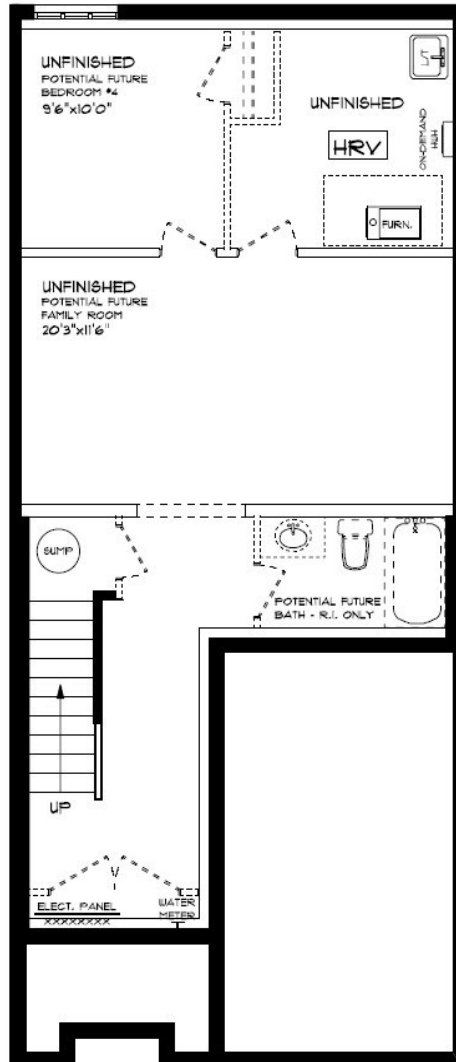
SECOND FLOOR LAUNDRY
PROFESSIONALLY DESIGNED
CARPET FLOORING
VINYL PLANK FLOORING
WALK-IN CLOSET

SECOND FLOOR:
APPROX 860 SQFT

HAYHOE™
— HOMES —

BASEMENT

237 RENAISSANCE DR, ST. THOMAS



BASEMENT:
UNFINISHED

- AIR CONDITIONING
- GAS FURNACE WITH HRV
- HUMIDIFIER
- NEW HOME WARRANTY



INTERIOR FINISHES

237 RENAISSANCE



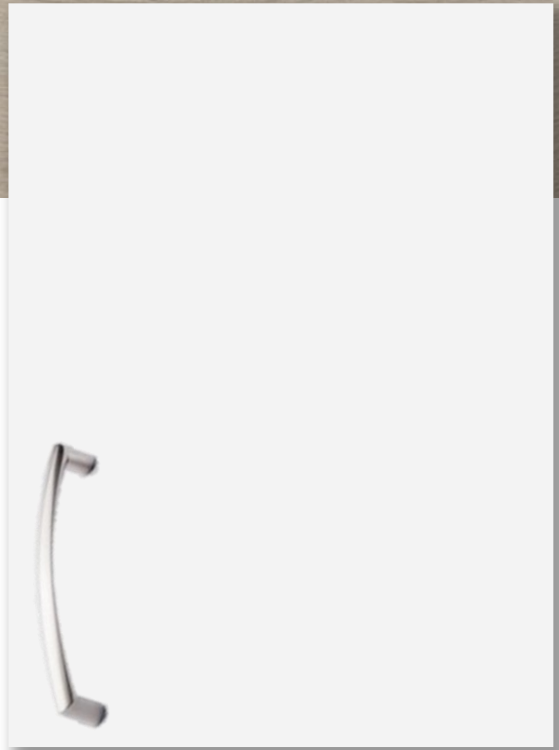
KITCHEN COUNTERTOPS



LUXURY VINYL PLANK



PAINT COLOUR



KITCHEN CABINETS

ISLAND PENDANTS



FOYER FIXTURE



INTERIOR FINISHES

237 RENAISSANCE

INTERIOR DOOR STYLE

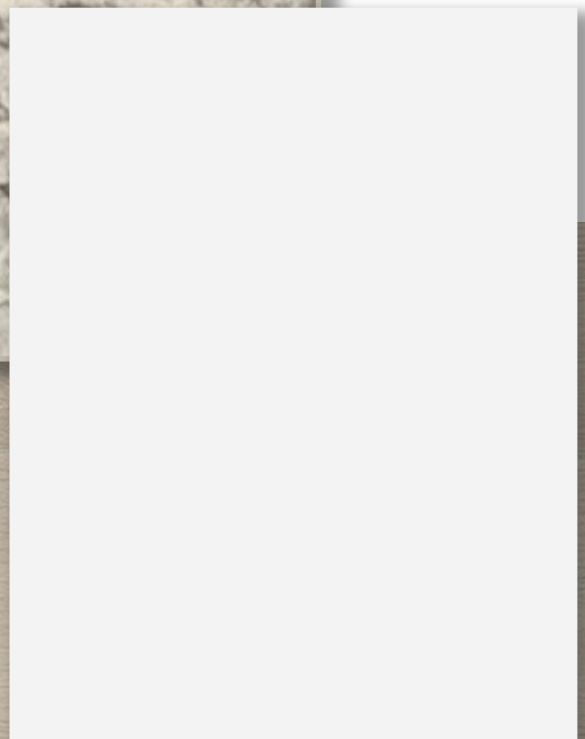


CARPET



BATHROOM
COUNTERTOP

BATHROOM
CABINERY



LUXURY VINYL PLANK

