

T O W N H O M E



ESSENTIAL FEATURES

243 RENAISSANCE DR

ORCHARD PARK MEADOWS, ST. THOMAS

THE DETAILS

PRICE	\$ 580,000
CLOSING DATE	AUGUST 15, 2025
LOT NUMBER	69F
BEDROOMS	3
BATHS	2.5
SQFT	1623
GARAGE	1
MODEL	2 STOREY TOWN



SALES PROFESSIONAL

DAVE MATTHEWS

519.633.9215

dave.matthews@hayhoehomes.com

SITE PLAN

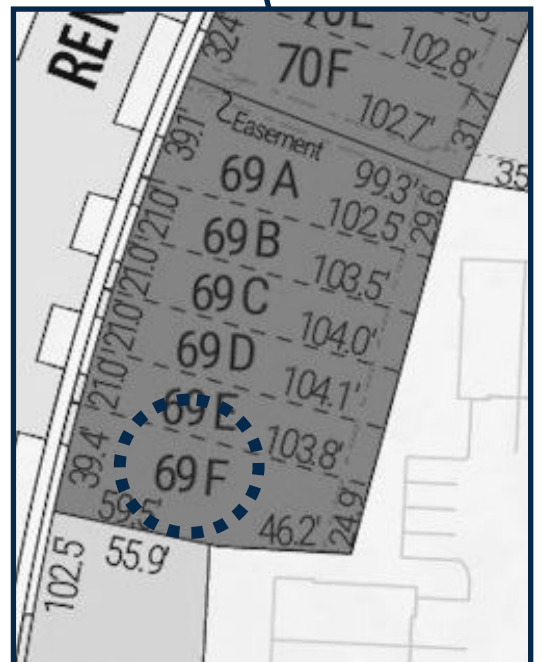


243 RENAISSANCE

EXTERIOR FEATURES:

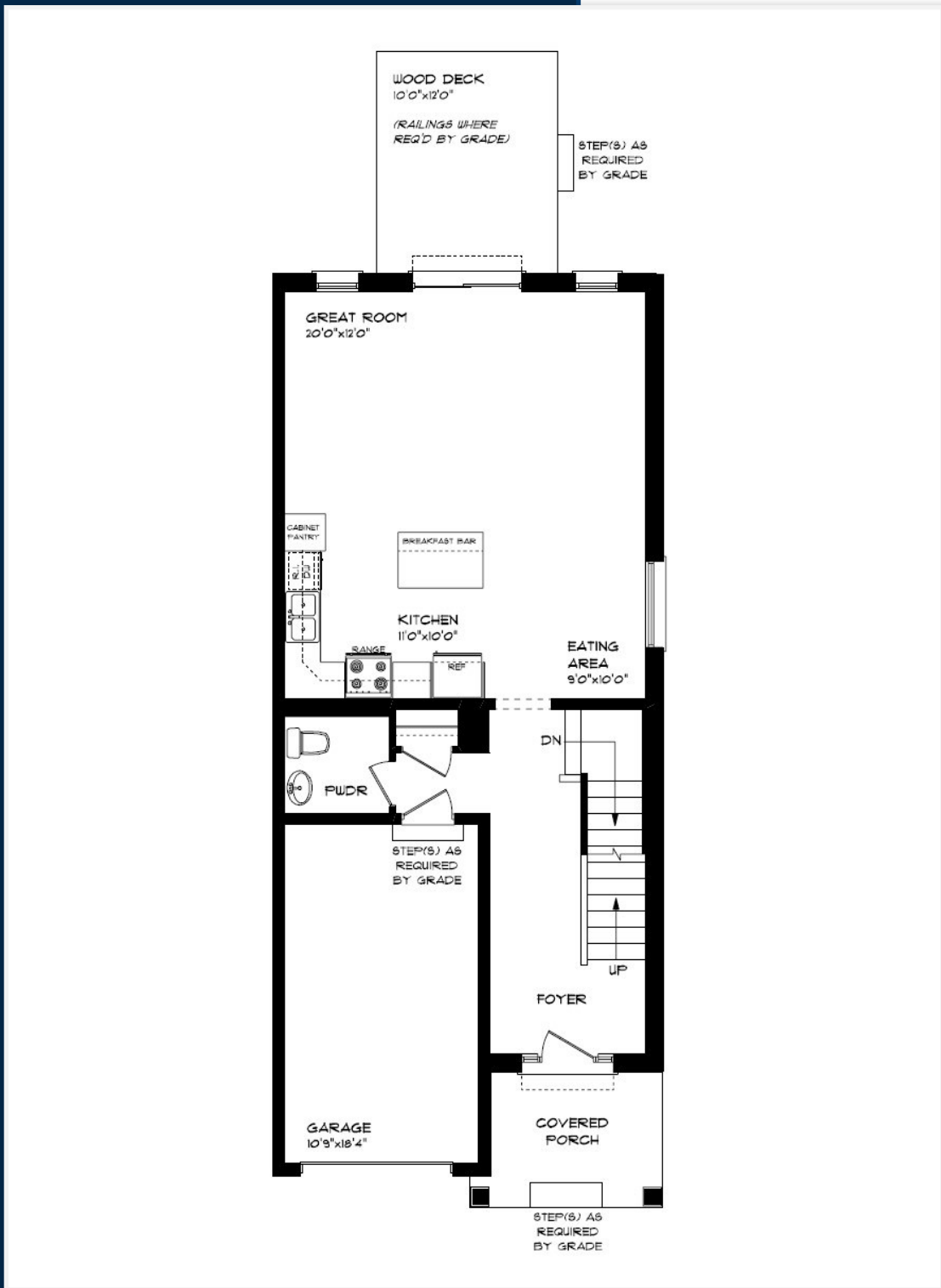
- KEYLESS ENTRY
- TREATED WOOD DECK
- ASPHALT DRIVEWAY
- WALKING TRAILS

HAYHOE™
HOMES



MAIN FLOOR

243 RENAISSANCE DR, ST. THOMAS



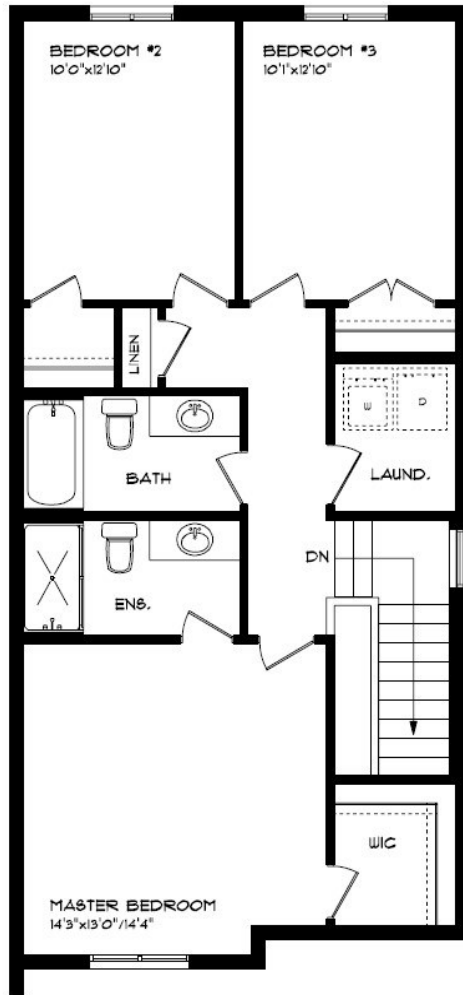
MAIN FLOOR:
APPROX 768 SQFT

- SINGLE CAR GARAGE
- KITCHEN ISLAND
- VINYL PLANK FLOORING
- QUARTZ COUNTERTOPS

HAYHOETM
— HOMES —

SECOND FLOOR

243 RENAISSANCE DR, ST. THOMAS



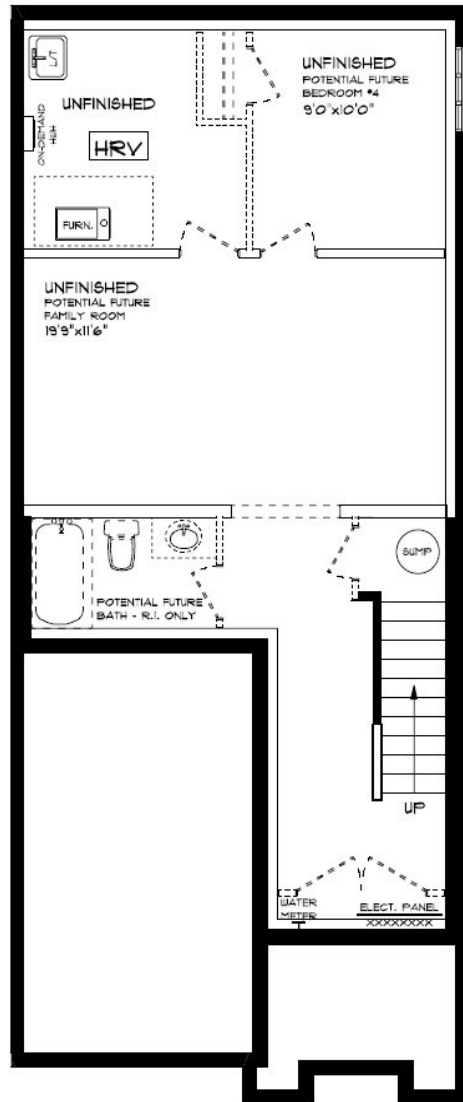
SECOND FLOOR:
APPROX 855 SQFT

SECOND FLOOR LAUNDRY
PROFESSIONALLY DESIGNED
CARPET FLOORING
VINYL PLANK FLOORING
WALK-IN CLOSET

HAYHOETM
— HOMES —

BASEMENT

243 RENAISSANCE DR, ST. THOMAS



BASEMENT:
UNFINISHED

- AIR CONDITIONING
- GAS FURNACE WITH HRV
- HUMIDIFIER
- NEW HOME WARRANTY

HAYHOETM
— HOMES —

INTERIOR FINISHES

243 RENAISSANCE



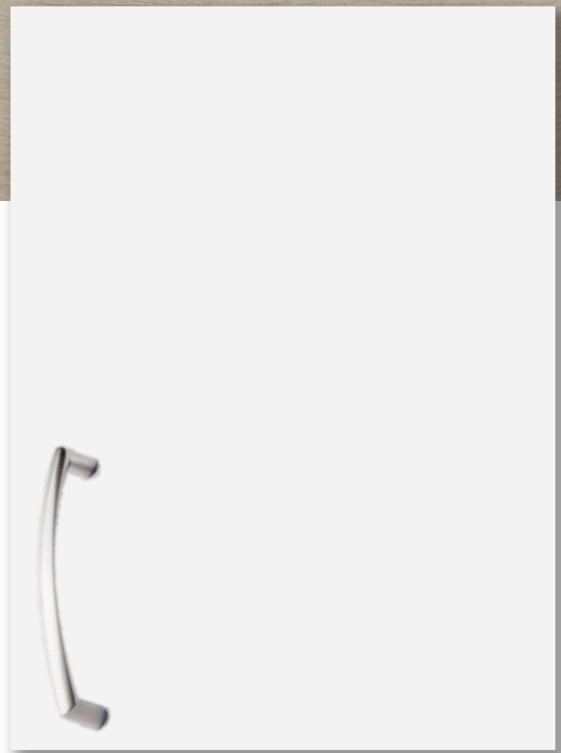
KITCHEN COUNTERTOPS



LUXURY VINYL PLANK



PAINT
COLOUR



KITCHEN
CABINETS

ISLAND PENDANTS



FOYER
FIXTURE



INTERIOR FINISHES

243 RENAISSANCE

INTERIOR DOOR STYLE

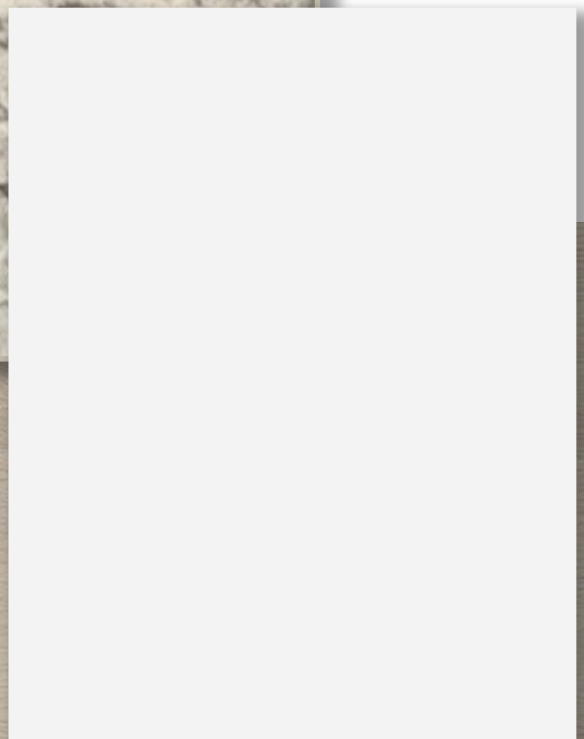
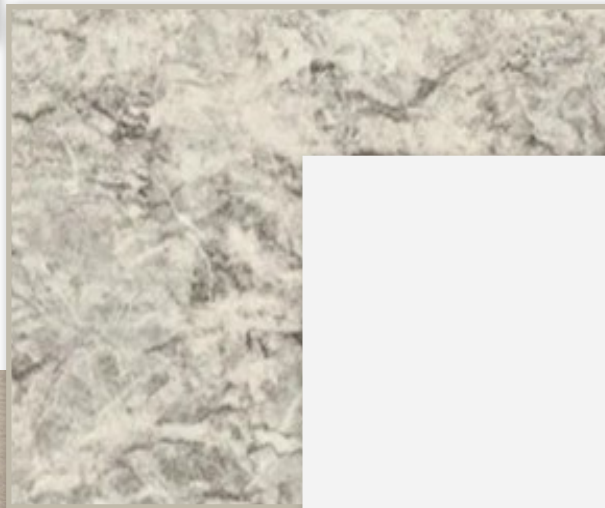


CARPET



BATHROOM
COUNTERTOP

BATHROOM
CABINERY



LUXURY VINYL PLANK

