

# T O W N H O M E

## PREMIUM FEATURES



## 227 RENAISSANCE DR

ORCHARD PARK MEADOWS, ST. THOMAS

### THE DETAILS

PRICE	\$ 600,000
CLOSING DATE	JANUARY 23, 2025
LOT NUMBER	70D
BEDROOMS	3+1
BATHS	3.5
SQFT	2134
GARAGE	1
MODEL	2 STOREY TOWN

**HAYHOE™**  
— HOMES —



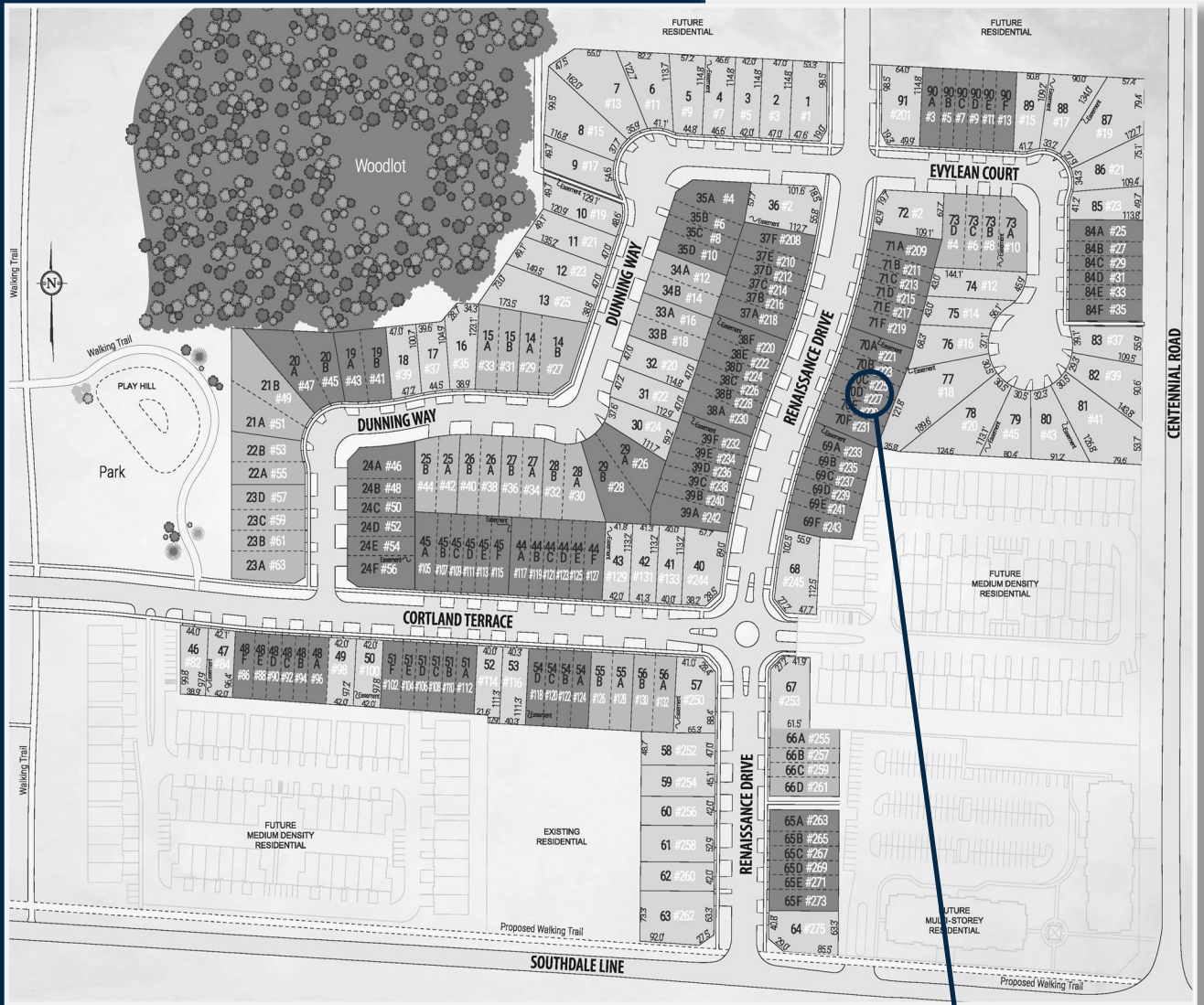
### SALES PROFESSIONAL

DAVE MATTHEWS

519.633.9215

dave.matthews@hayhoehomes.com

# SITE PLAN

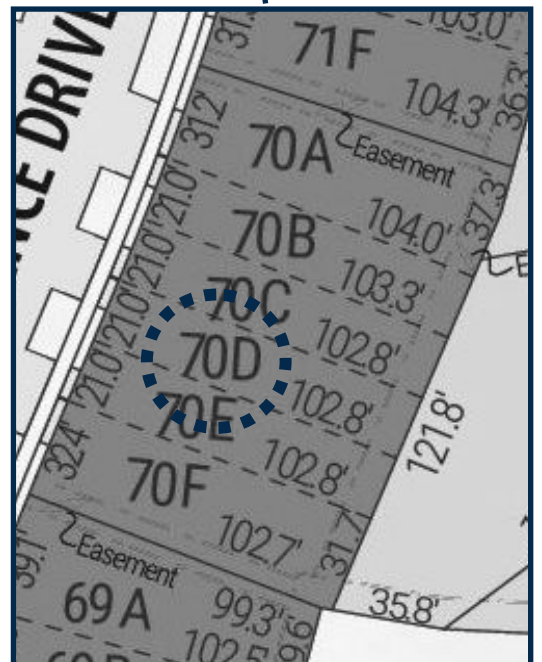


## 227 RENAISSANCE

### EXTERIOR FEATURES:

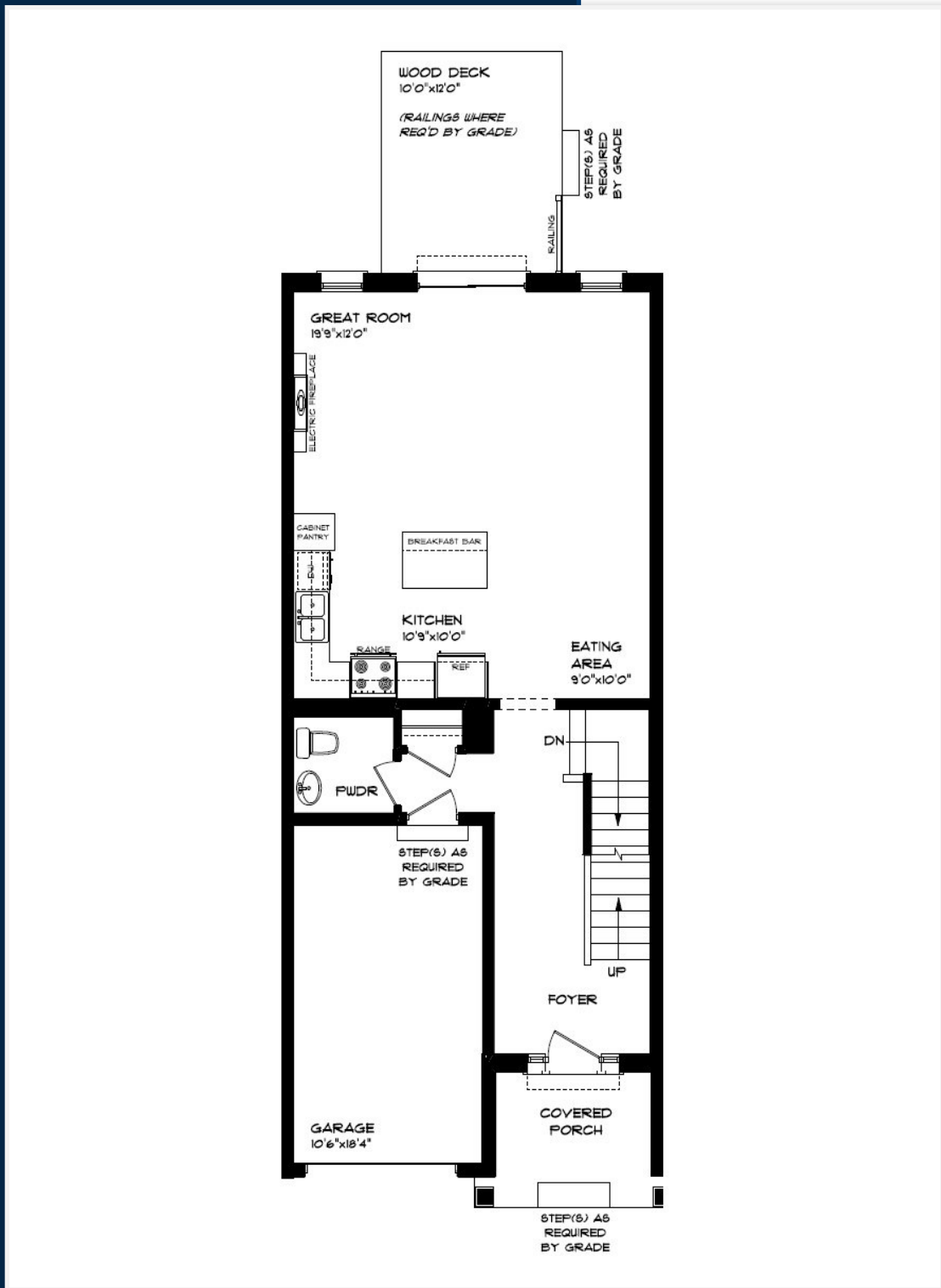
- KEYLESS ENTRY
- TREATED WOOD DECK
- BBQ GAS LINE
- ASPHALT DRIVEWAY
- WALKING TRAILS

**HAYHOE™**  
HOMES



# MAIN FLOOR

227 RENAISSANCE DR, ST. THOMAS



SINGLE CAR GARAGE

KITCHEN ISLAND

VINYL PLANK FLOORING

ELECTRIC FIREPLACE

QUARTZ COUNTERTOPS

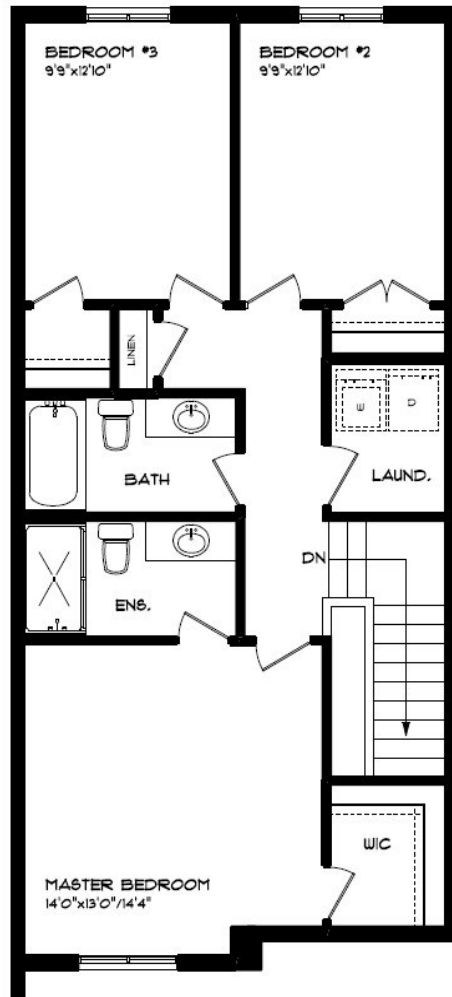
KITCHEN BACKSPLASH

**HAYHOE**<sup>TM</sup>  
— HOMES —

MAIN FLOOR:  
APPROX 755 SQFT

# SECOND FLOOR

227 RENAISSANCE DR, ST. THOMAS



SECOND FLOOR:  
APPROX 844 SQFT

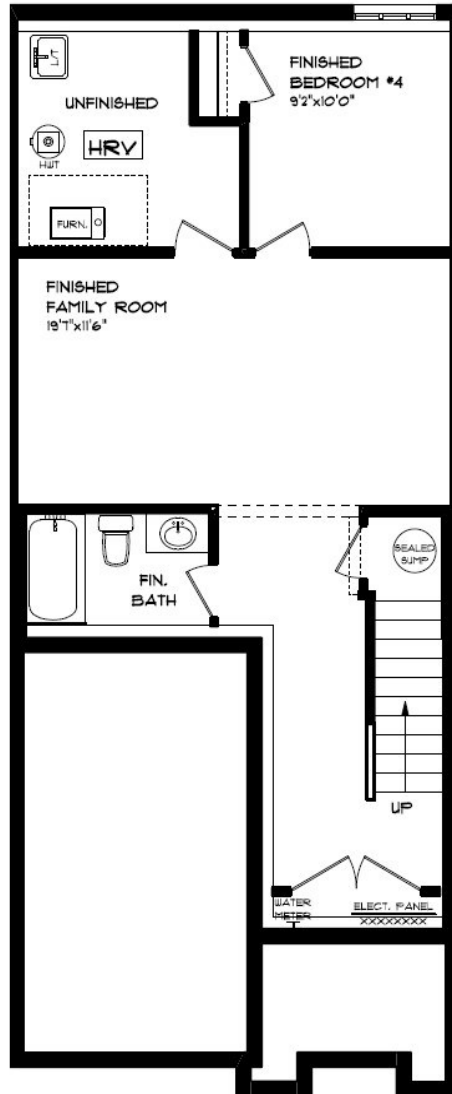
SECOND FLOOR LAUNDRY  
PROFESSIONALLY DESIGNED  
CARPET FLOORING  
VINYL PLANK FLOORING  
WALK-IN CLOSET

**HAYHOE™**  
— HOMES —



# BASEMENT

227 RENAISSANCE DR, ST. THOMAS



- AIR CONDITIONING
- GAS FURNACE WITH HRV
- HUMIDIFIER
- NEW HOME WARRANTY
- CARPET FLOORING
- VINYL PLANK FLOORING

BASEMENT:  
APROX 535 SQFT

**HAYHOE**<sup>TM</sup>  
—HOMES—

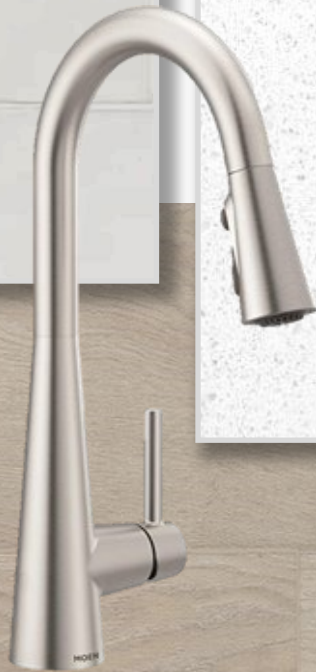
# INTERIOR FINISHES

## 227 RENAISSANCE

KITCHEN BACKSPLASH



KITCHEN COUNTERTOPS



LUXURY VINYL PLANK



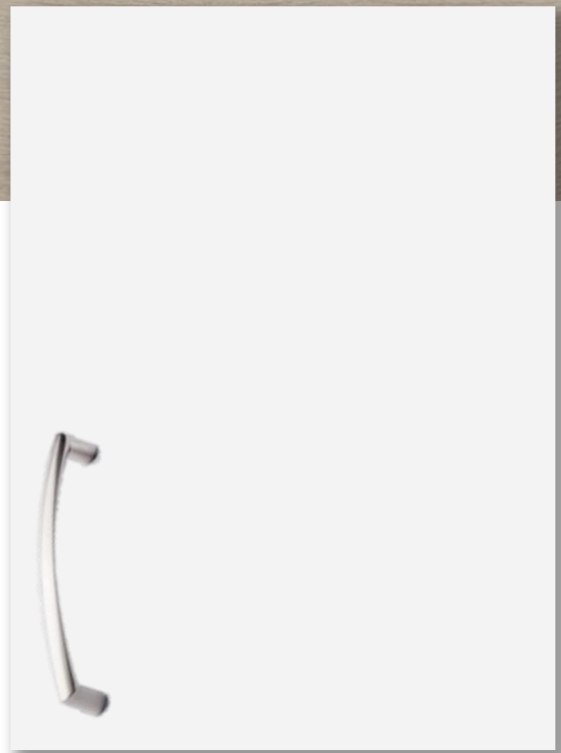
PAINT  
COLOUR



ISLAND PENDANTS



FOYER  
FIXTURE



KITCHEN  
CABINETS

**HAYHOE™**  
HOMES

PRICE, PRODUCTS, COLOURS & FEATURES ARE SUBJECT TO CHANGE WITHOUT NOTICE.  
COLOURS SHOWN MAY VARY FROM INSTALLED MATERIALS. E & O.E

CREATED SEPT 1, 2022

# INTERIOR FINISHES

## 227 RENAISSANCE

INTERIOR DOOR STYLE

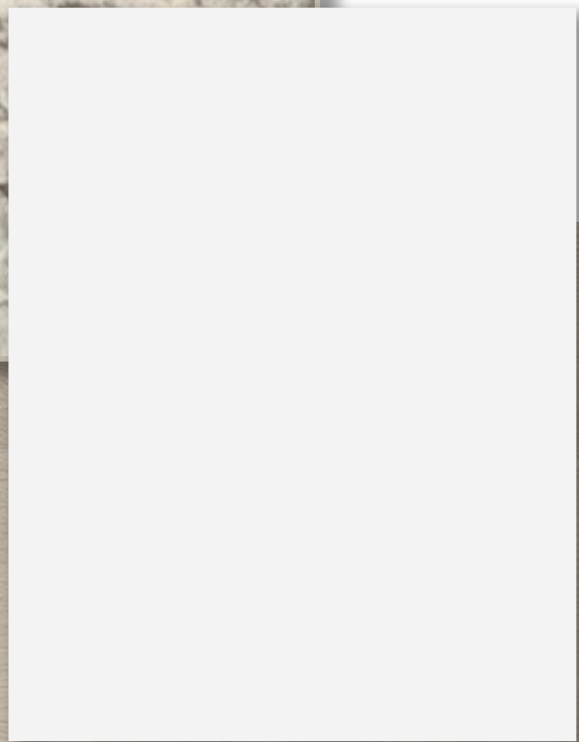
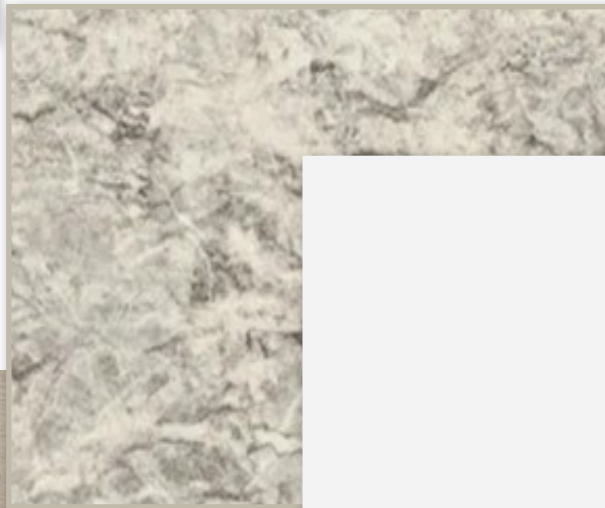


CARPET



BATHROOM  
COUNTERTOP

BATHROOM  
CABINERY



LUXURY VINYL PLANK

