

T O W N H O M E



209 RENAISSANCE DRIVE

ORCHARD PARK MEADOWS, ST. THOMAS

THE DETAILS

PRICE	\$ 580,000
CLOSING DATE	JANUARY 6, 2025
LOT NUMBER	71A
BEDROOMS	3
BATHS	2.5
SQFT	1623
GARAGE	1
MODEL	2 STOREY TOWN

HAYHOE™
— HOMES —



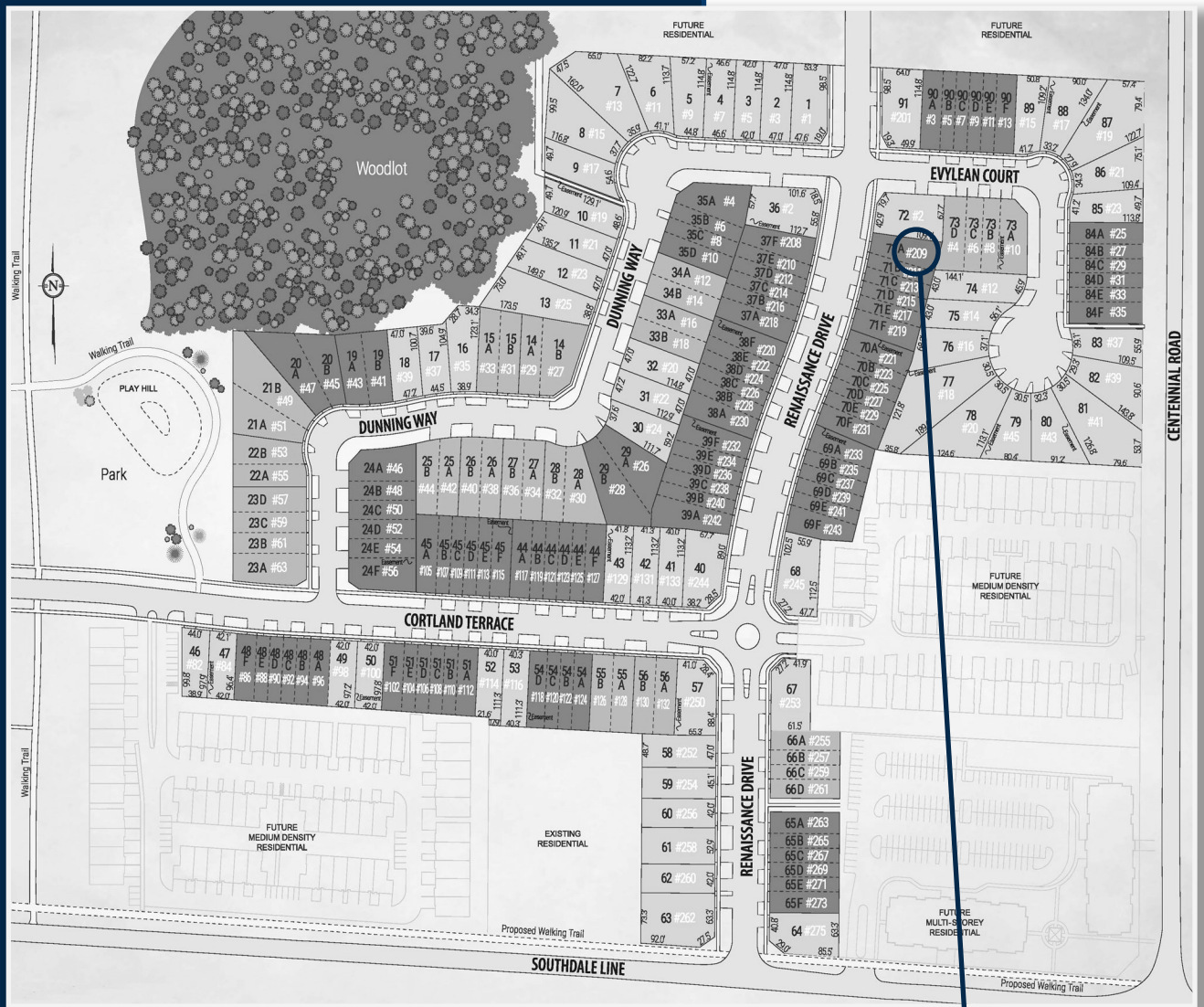
SALES PROFESSIONAL

DAVE MATTHEWS

519.633.9215

dave.matthews@hayhoehomes.com

SITE PLAN

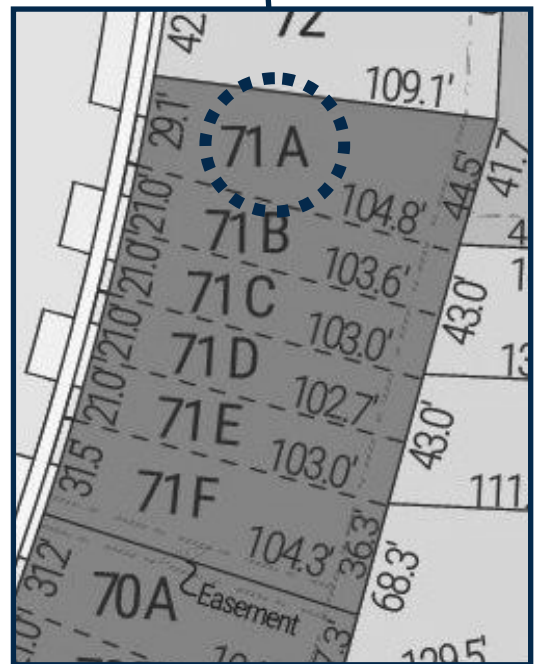


209 RENAISSANCE

EXTERIOR FEATURES:

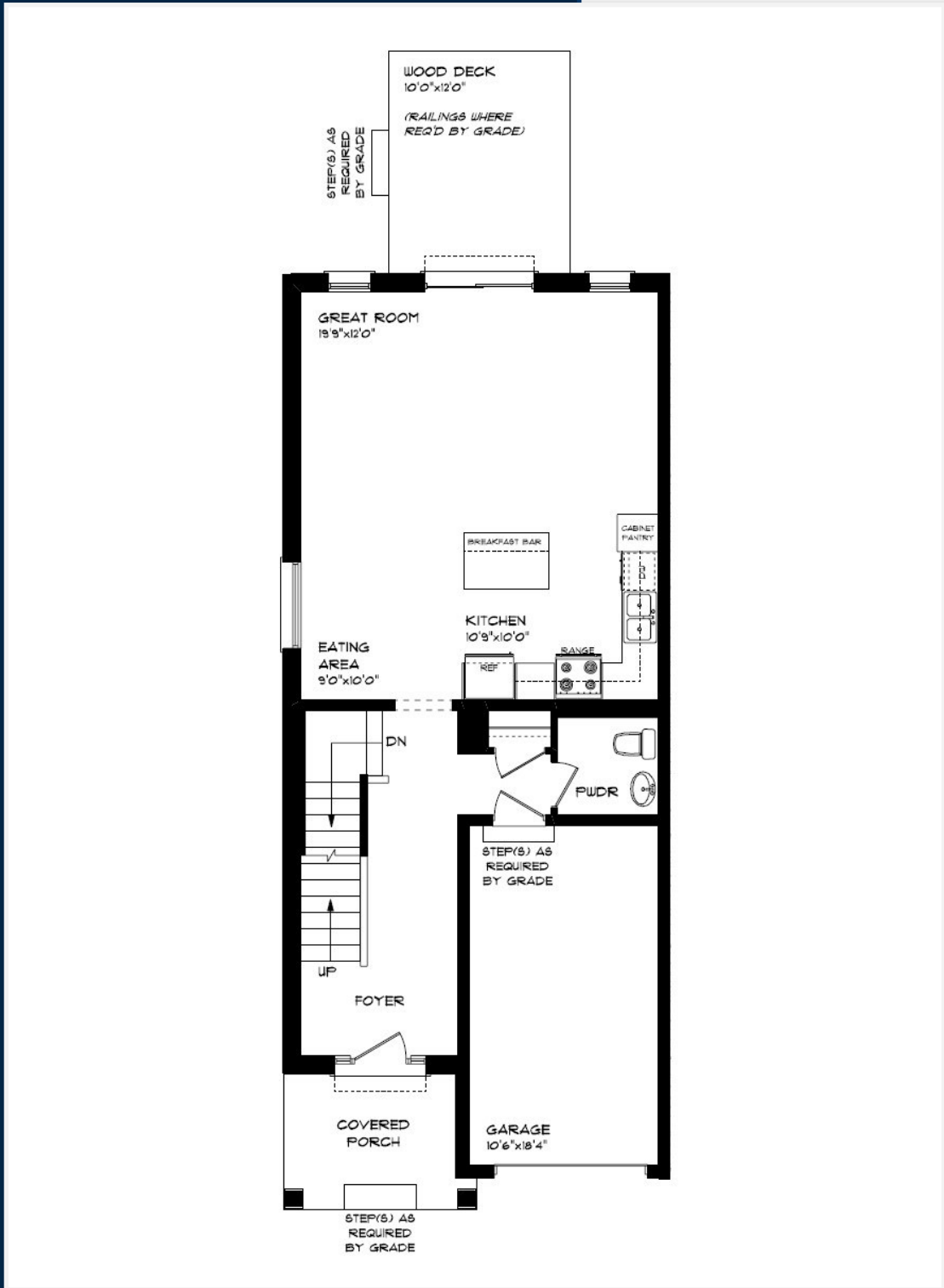
- KEYLESS ENTRY
- TREATED WOOD DECK
- ASPHALT DRIVEWAY
- WALKING TRAILS

HAYHOE™
HOMES



MAIN FLOOR

209 RENAISSANCE DR, ST. THOMAS



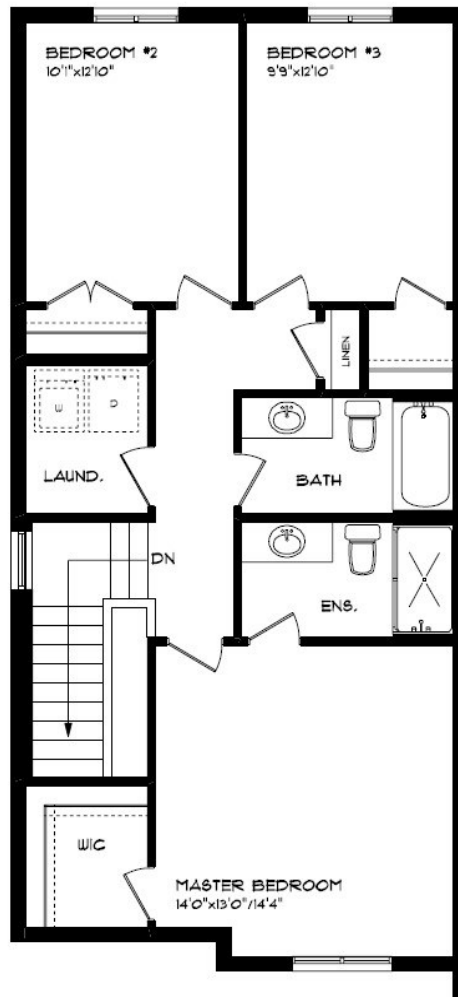
MAIN FLOOR:
APPROX 768 SQFT

- SINGLE CAR GARAGE
- KITCHEN ISLAND
- VINYL PLANK FLOORING
- QUARTZ COUNTERTOPS

HAYHOETM
— HOMES —

SECOND FLOOR

209 RENAISSANCE DR, ST. THOMAS



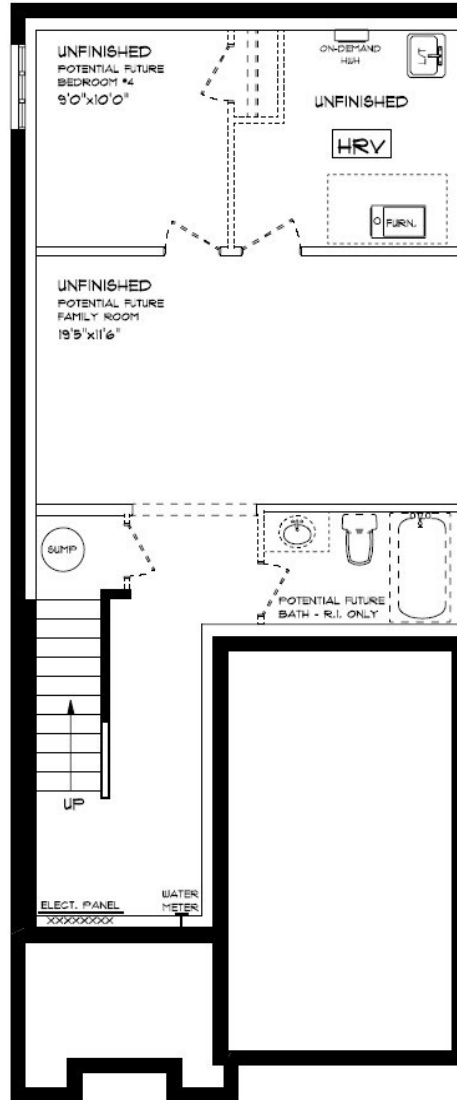
SECOND FLOOR:
APPROX 855 SQFT

SECOND FLOOR LAUNDRY
PROFESSIONALLY DESIGNED
CARPET FLOORING
VINYL PLANK FLOORING
WALK-IN CLOSET

HAYHOE™
— HOMES —

BASEMENT

209 RENAISSANCE DR, ST. THOMAS



BASEMENT:
UNFINISHED

AIR CONDITIONING
GAS FURNACE WITH HRV
HUMIDIFIER
NEW HOME WARRANTY

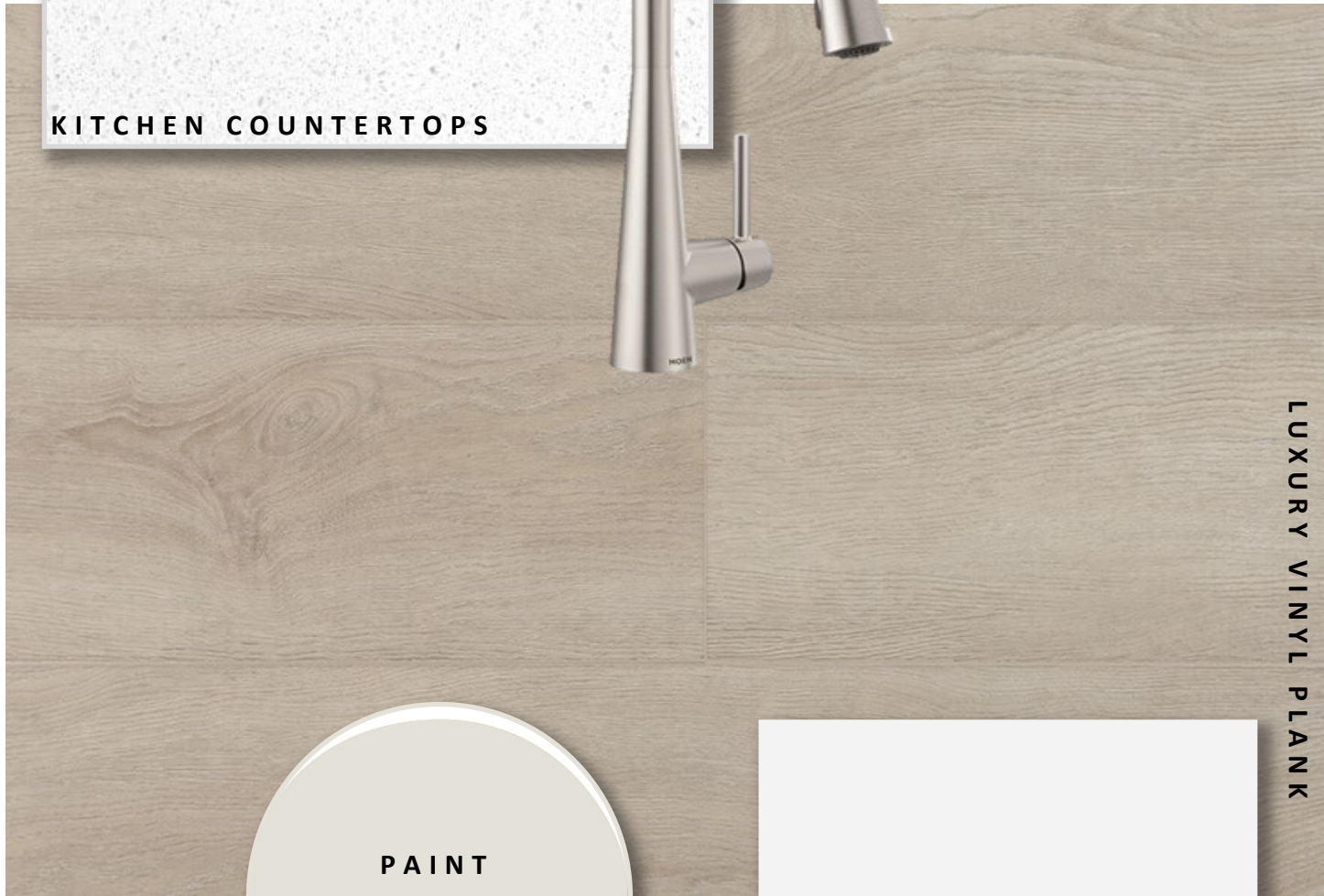
HAYHOE™
— HOMES —

INTERIOR FINISHES

209 RENAISSANCE



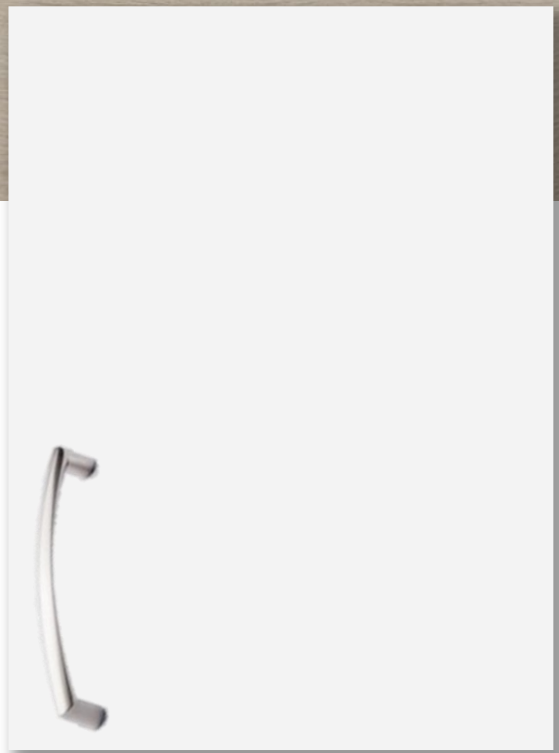
KITCHEN COUNTERTOPS



LUXURY VINYL PLANK



PAINT
COLOUR



KITCHEN
CABINETS

ISLAND PENDANTS



FOYER
FIXTURE



INTERIOR FINISHES

209 RENAISSANCE

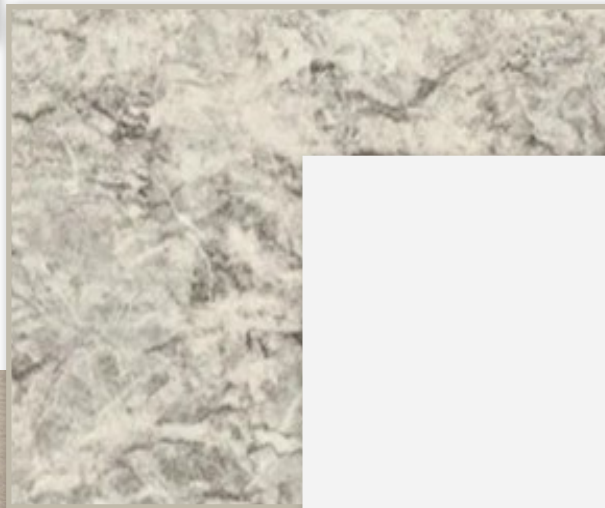
INTERIOR DOOR STYLE



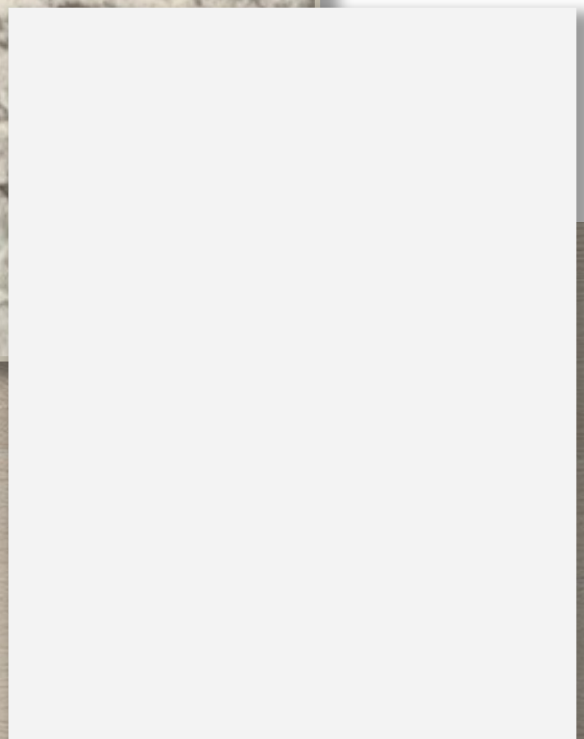
CARPET



BATHROOM
COUNTERTOP



BATHROOM
CABINERY



LUXURY VINYL PLANK

