

# T O W N H O M E

ESSENTIAL FEATURES



## 213 RENAISSANCE DRIVE

ORCHARD PARK MEADOWS, ST. THOMAS

### THE DETAILS

PRICE	\$ 555,000
CLOSING DATE	JANUARY 8, 2025
LOT NUMBER	71C
BEDROOMS	3
BATHS	2.5
SQFT	1615
GARAGE	1
MODEL	2 STOREY TOWN

**HAYHOE™**  
— HOMES —



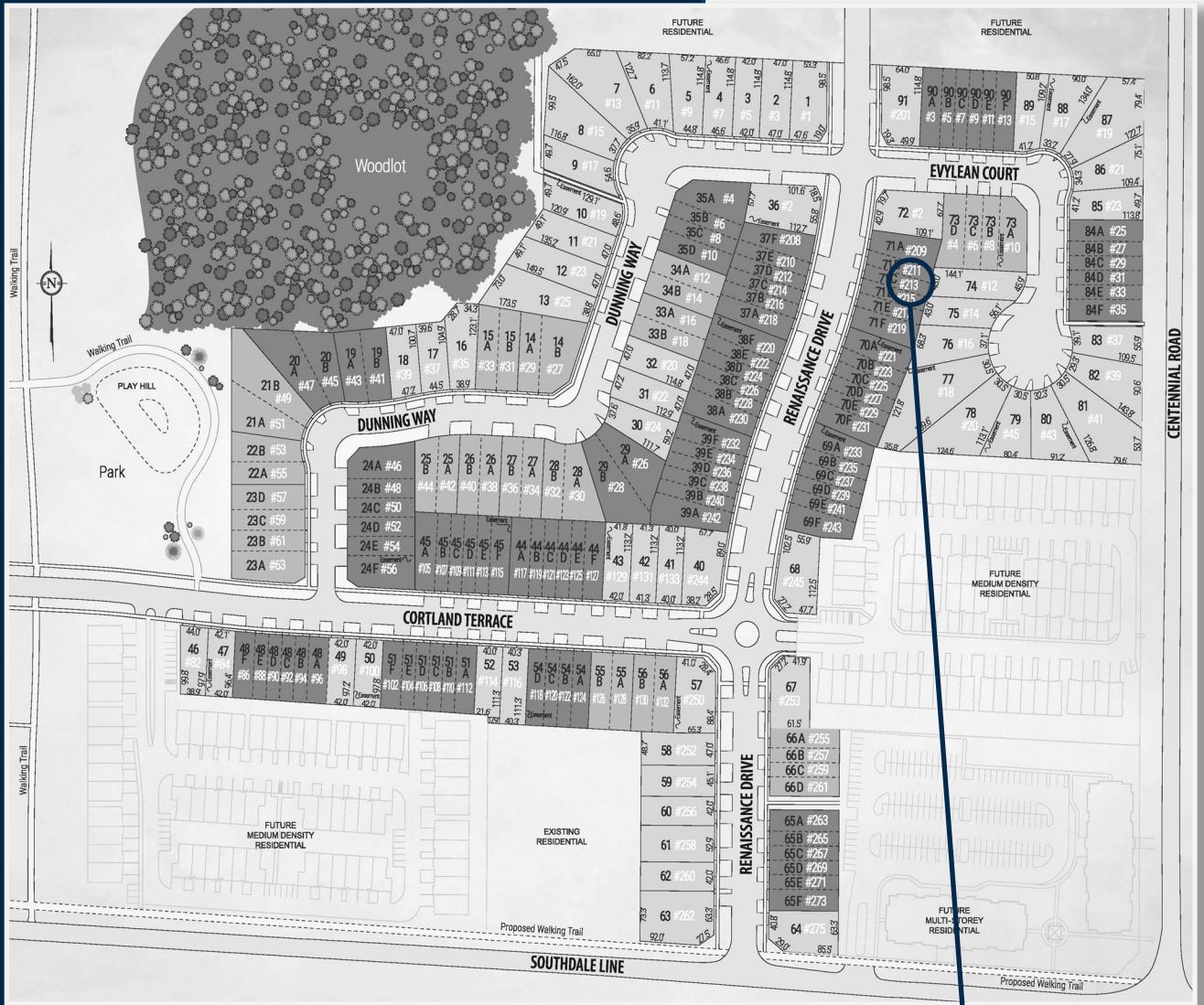
**SALES PROFESSIONAL**

DAVE MATTHEWS

519.633.9215

dave.matthews@hayhoehomes.com

# SITE PLAN

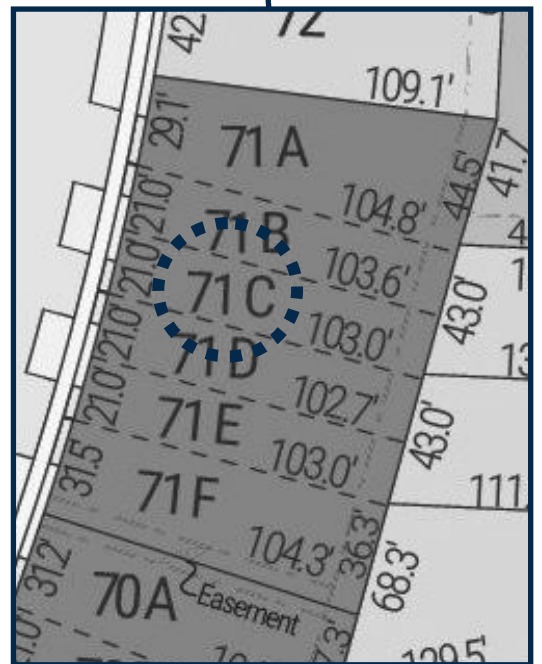


## 213 RENAISSANCE

### EXTERIOR FEATURES:

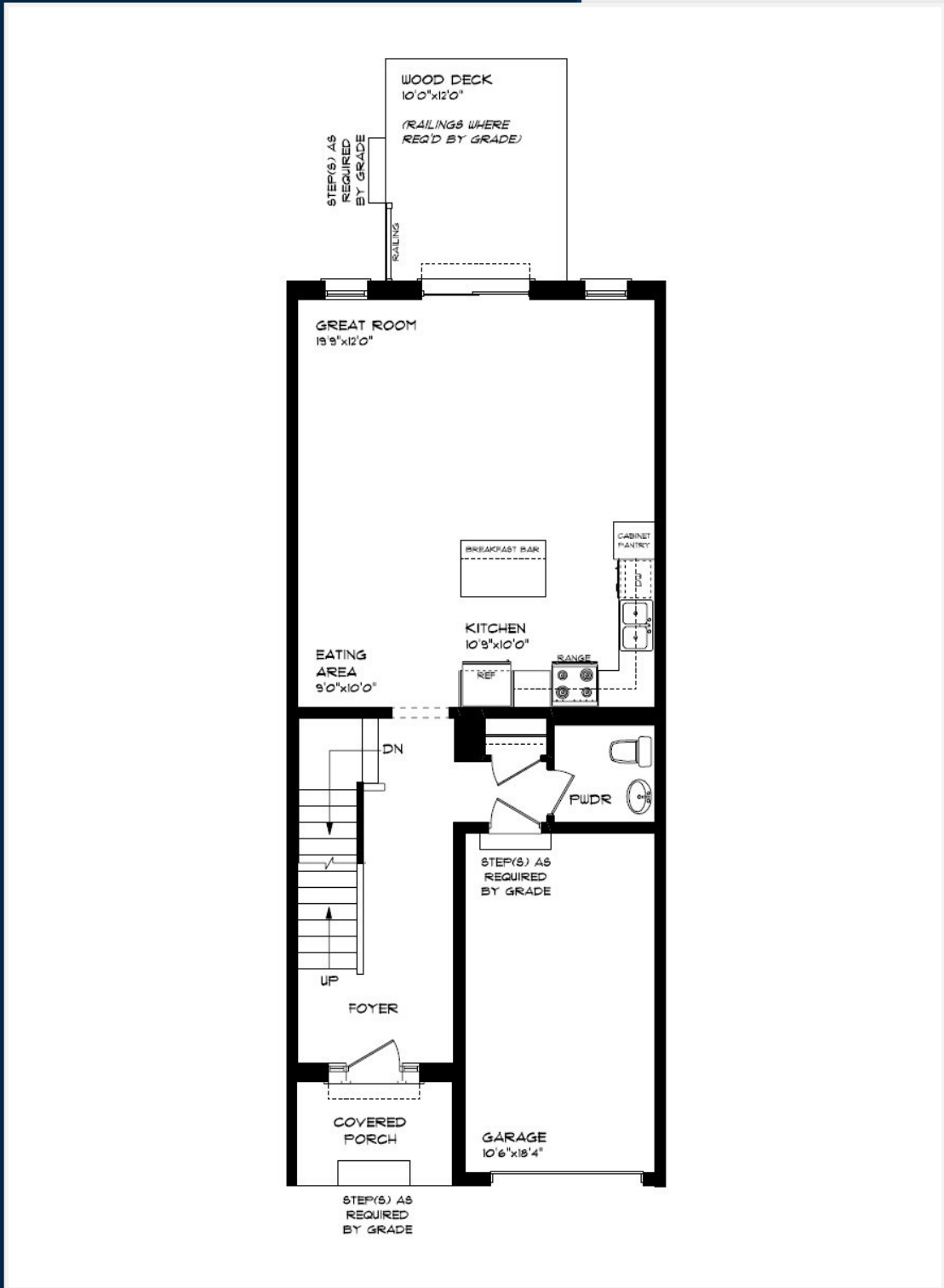
- KEYLESS ENTRY
- TREATED WOOD DECK
- ASPHALT DRIVEWAY
- WALKING TRAILS

**HAYHOE™**  
HOMES



# MAIN FLOOR

213 RENAISSANCE DR, ST. THOMAS



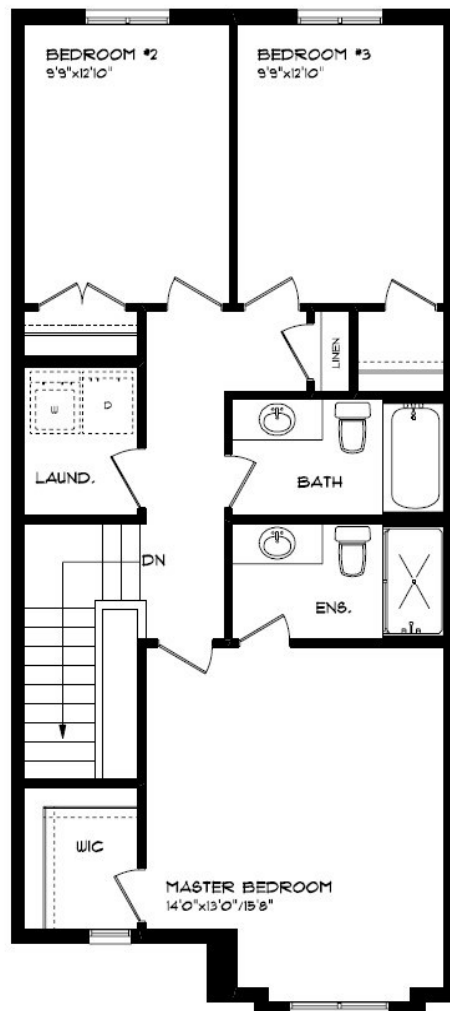
MAIN FLOOR:  
APPROX 755 SQFT

- SINGLE CAR GARAGE
- KITCHEN ISLAND
- VINYL PLANK FLOORING
- QUARTZ COUNTERTOPS



# SECOND FLOOR

213 RENAISSANCE DR, ST. THOMAS



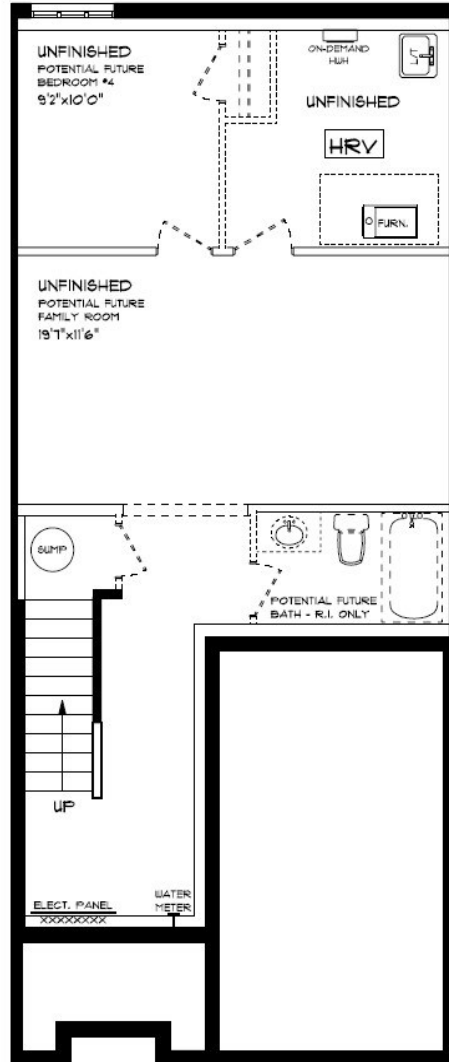
SECOND FLOOR:  
APPROX 860 SQFT

SECOND FLOOR LAUNDRY  
PROFESSIONALLY DESIGNED  
CARPET FLOORING  
VINYL PLANK FLOORING  
WALK-IN CLOSET

**HAYHOE™**  
— HOMES —

# BASEMENT

213 RENAISSANCE DR, ST. THOMAS



BASEMENT:  
UNFINISHED

AIR CONDITIONING  
GAS FURNACE WITH HRV  
HUMIDIFIER  
NEW HOME WARRANTY

**HAYHOE™**  
— HOMES —

# INTERIOR FINISHES

## 213 RENAISSANCE



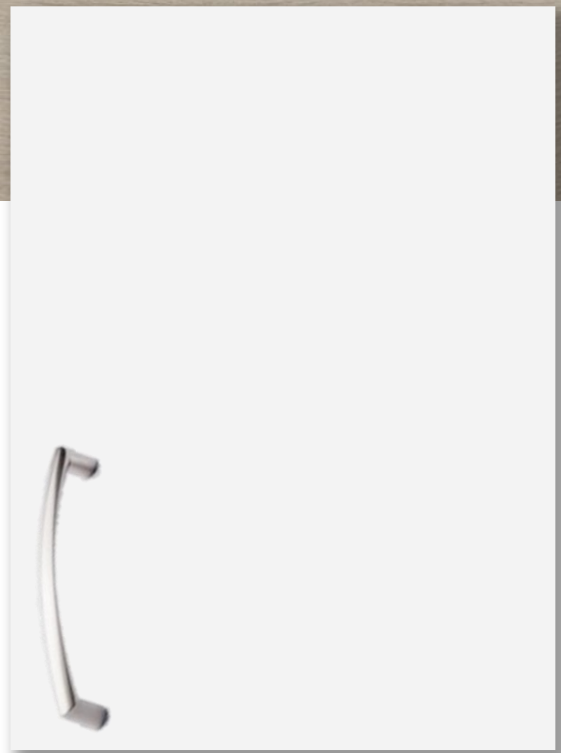
KITCHEN COUNTERTOPS



LUXURY VINYL PLANK



PAINT  
COLOUR



KITCHEN  
CABINETS

ISLAND PENDANTS



FOYER  
FIXTURE



# INTERIOR FINISHES

## 213 RENAISSANCE

INTERIOR DOOR STYLE

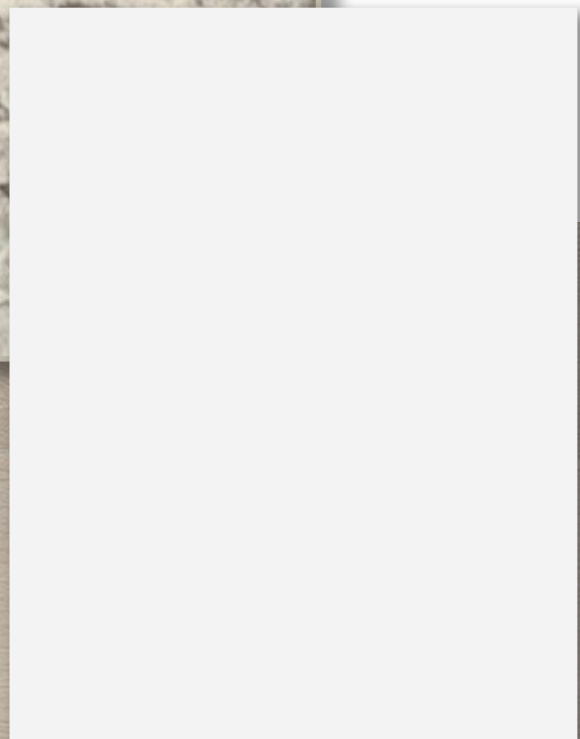
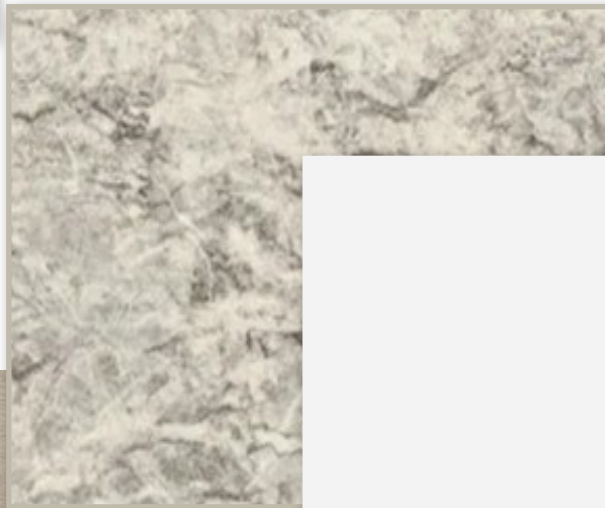


CARPET



BATHROOM  
COUNTERTOP

BATHROOM  
CABINERY



LUXURY VINYL PLANK

