

T O W N H O M E



217 RENAISSANCE DRIVE

ORCHARD PARK MEADOWS, ST. THOMAS

THE DETAILS

PRICE	\$ 555,000
CLOSING DATE	JANUARY 9, 2025
LOT NUMBER	71E
BEDROOMS	3
BATHS	2.5
SQFT	1615
GARAGE	1
MODEL	2 STOREY TOWN

HAYHOE™
— HOMES —



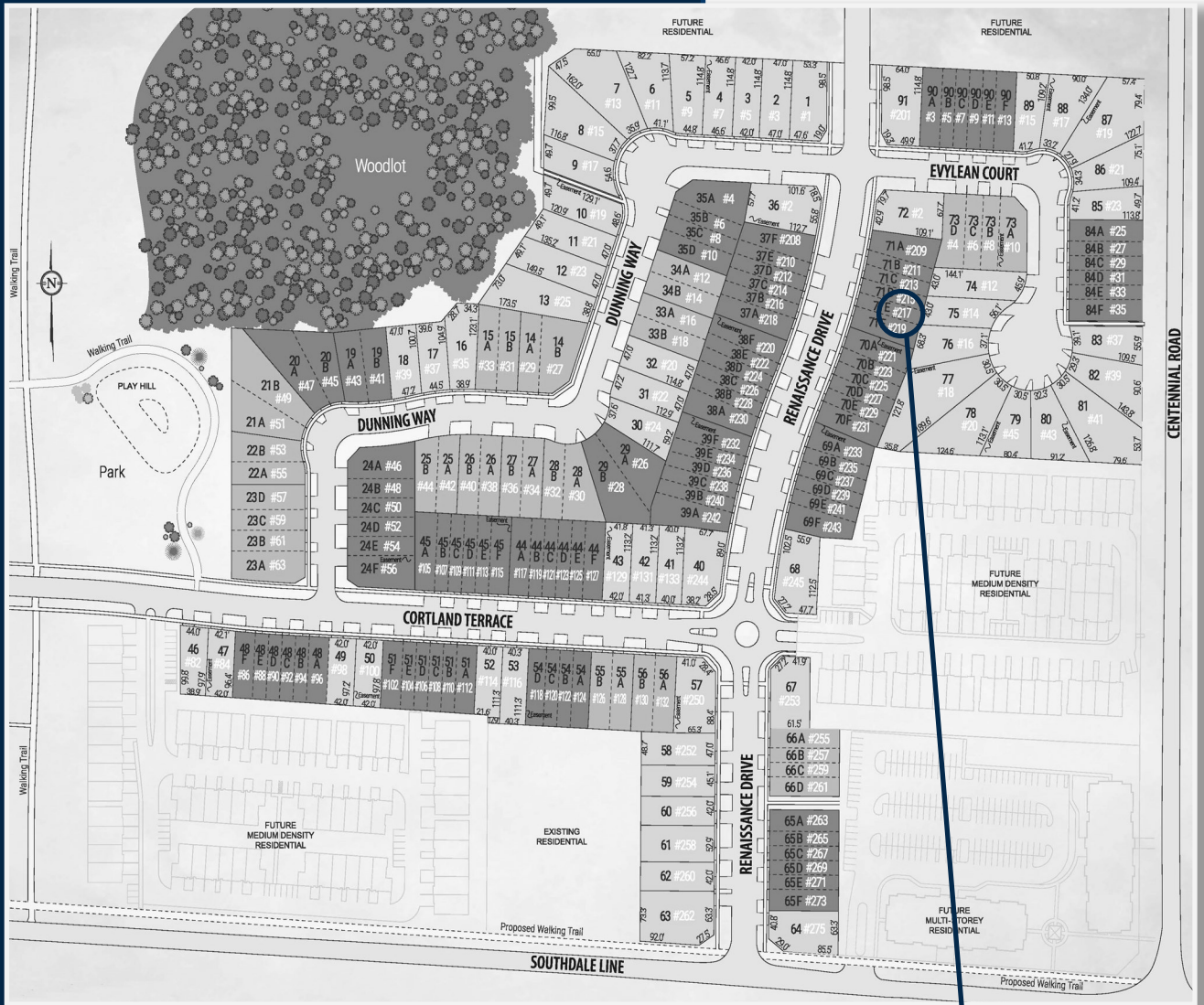
SALES PROFESSIONAL

DAVE MATTHEWS

519.633.9215

dave.matthews@hayhoehomes.com

SITE PLAN

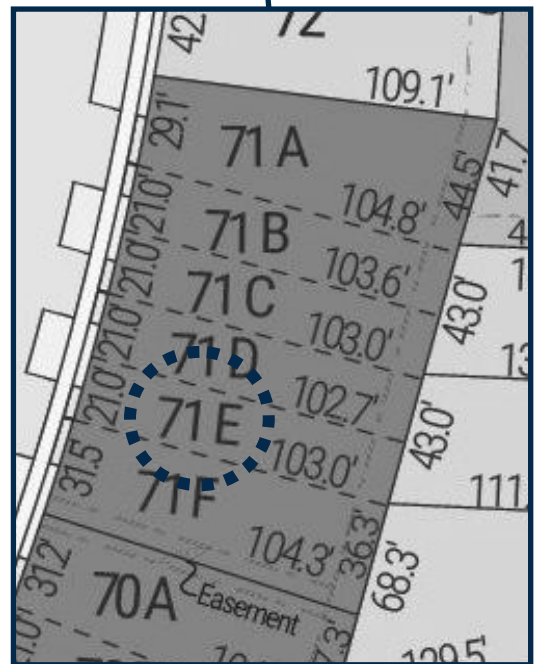


217 RENAISSANCE

EXTERIOR FEATURES:

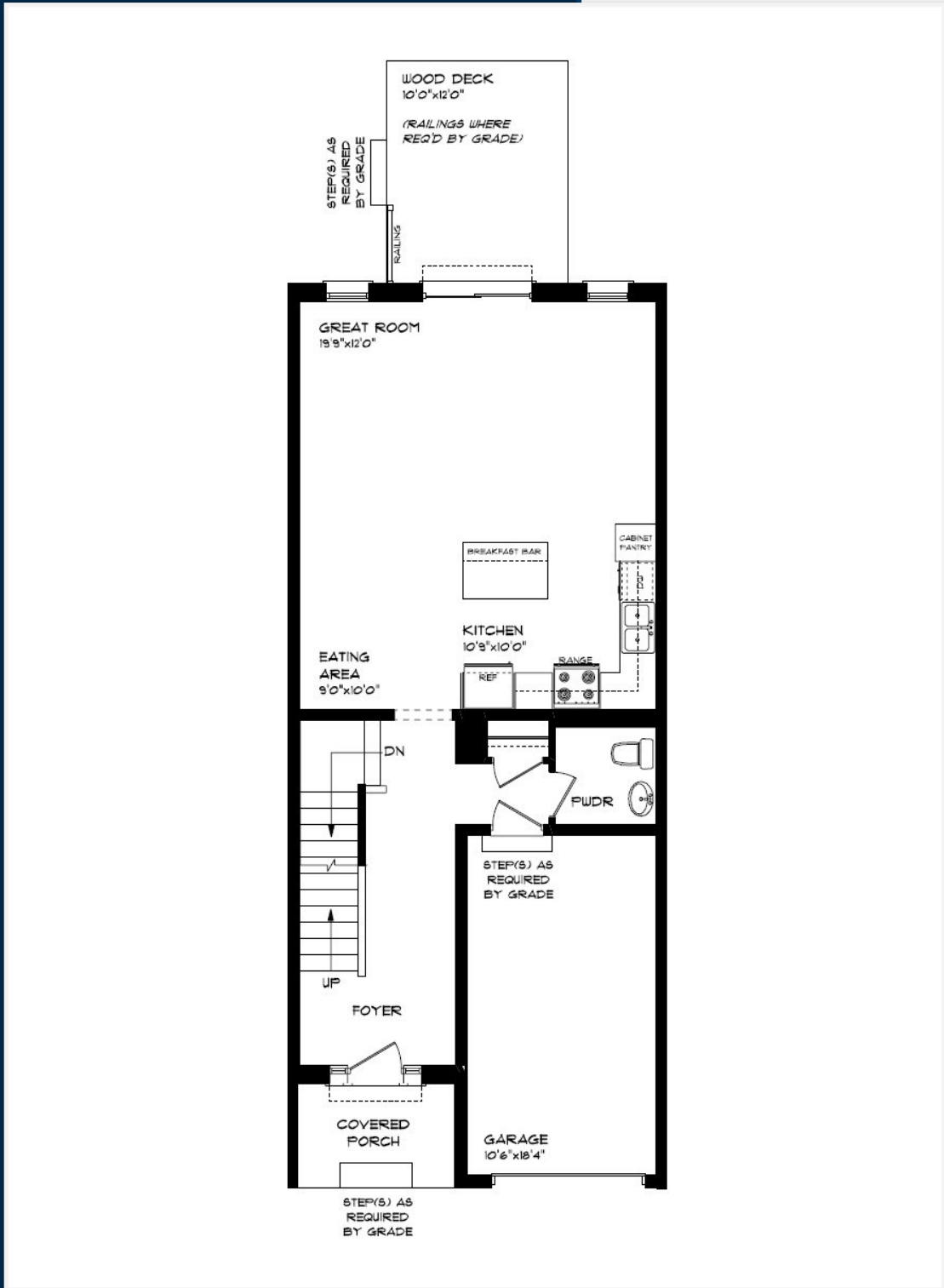
- KEYLESS ENTRY
- TREATED WOOD DECK
- ASPHALT DRIVEWAY
- WALKING TRAILS

HAYHOE™
HOMES



MAIN FLOOR

217 RENAISSANCE DR, ST. THOMAS



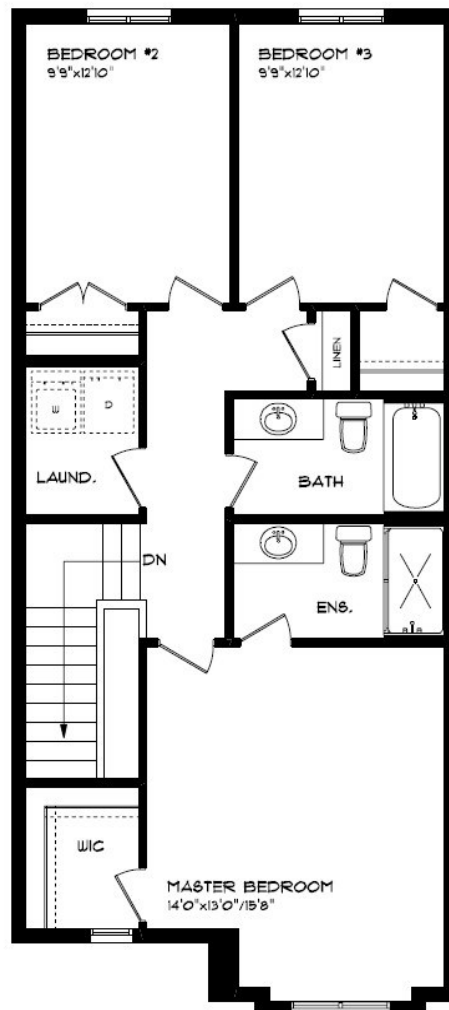
MAIN FLOOR:
APPROX 755 SQFT

- SINGLE CAR GARAGE
- KITCHEN ISLAND
- VINYL PLANK FLOORING
- QUARTZ COUNTERTOPS

HAYHOETM
— HOMES —

SECOND FLOOR

217 RENAISSANCE DR, ST. THOMAS



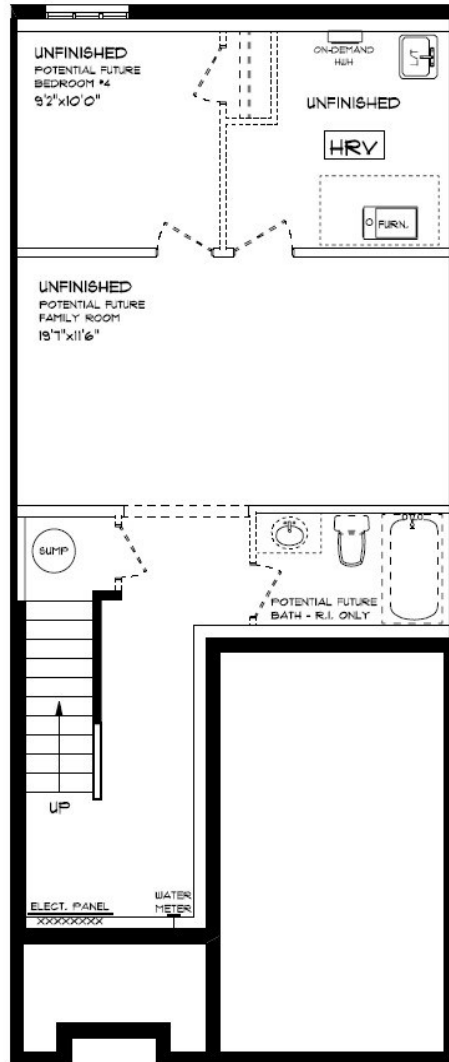
SECOND FLOOR LAUNDRY
PROFESSIONALLY DESIGNED
CARPET FLOORING
VINYL PLANK FLOORING
WALK-IN CLOSET

SECOND FLOOR:
APPROX 860 SQFT

HAYHOE™
—HOMES—

BASEMENT

217 RENAISSANCE DR, ST. THOMAS



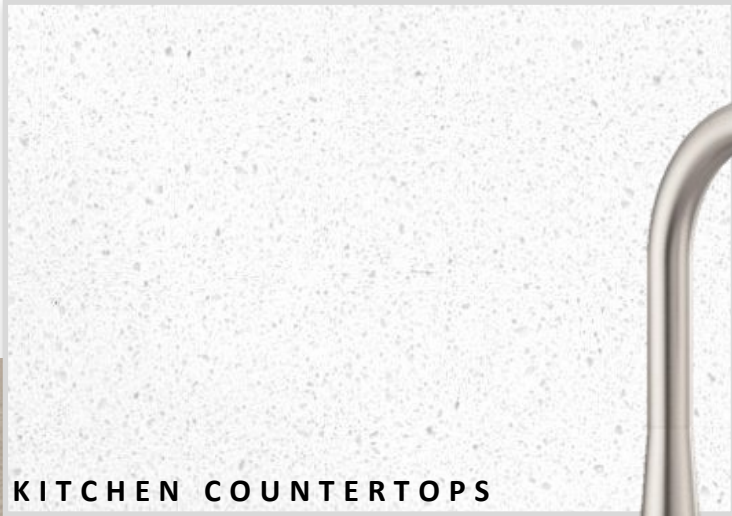
BASEMENT:
UNFINISHED

- AIR CONDITIONING
- GAS FURNACE WITH HRV
- HUMIDIFIER
- NEW HOME WARRANTY

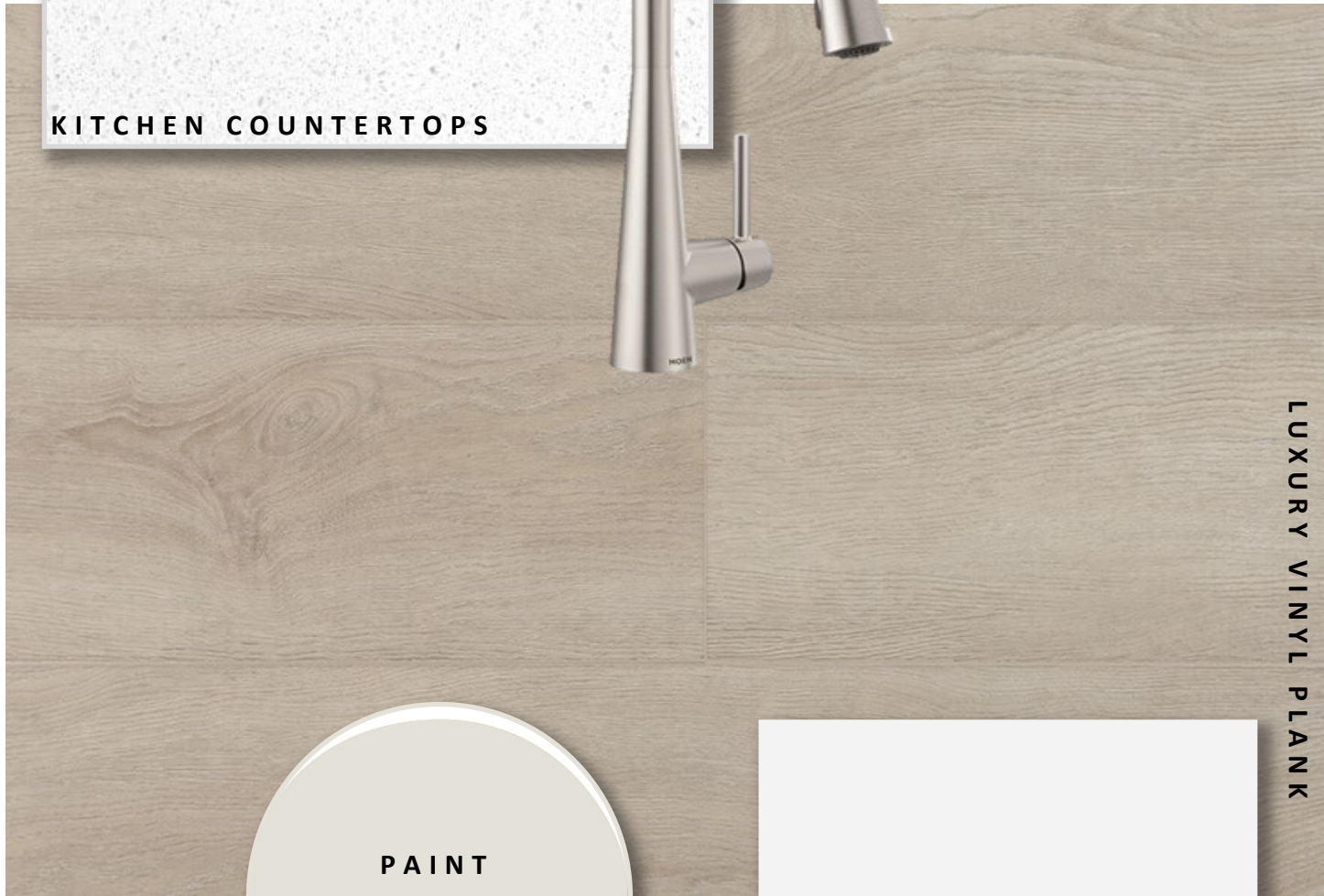
HAYHOETM
— HOMES —

INTERIOR FINISHES

217 RENAISSANCE



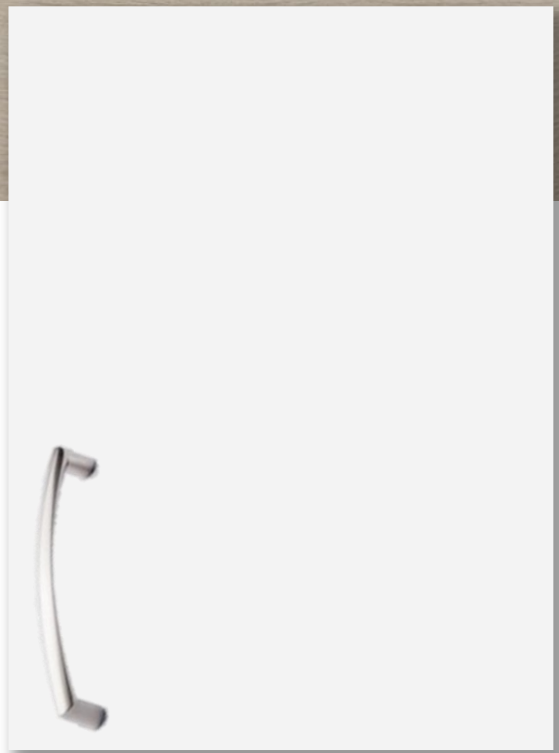
KITCHEN COUNTERTOPS



LUXURY VINYL PLANK



PAINT
COLOUR



KITCHEN
CABINETS

ISLAND PENDANTS



FOYER
FIXTURE



INTERIOR FINISHES

217 RENAISSANCE

INTERIOR DOOR STYLE

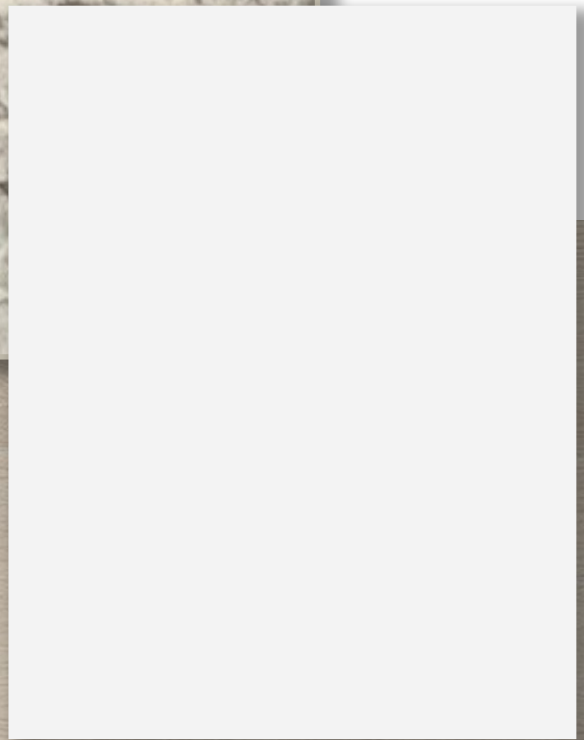
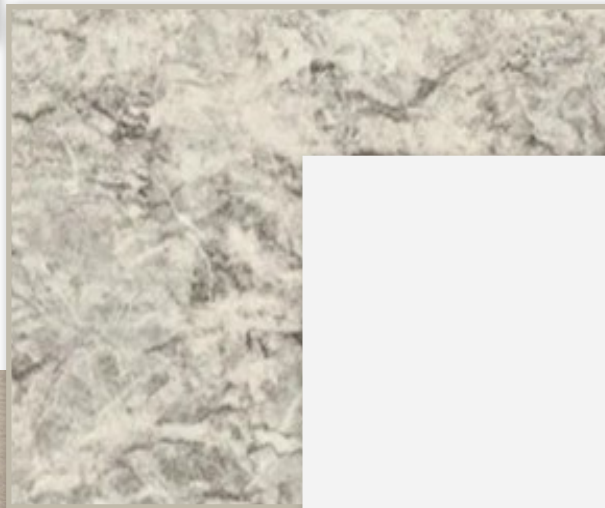


CARPET



BATHROOM
COUNTERTOP

BATHROOM
CABINERY



LUXURY VINYL PLANK

