

T O W N H O M E



219 RENAISSANCE DRIVE

ORCHARD PARK MEADOWS, ST. THOMAS

THE DETAILS

PRICE	\$ 580,000
CLOSING DATE	JANUARY 10, 2025
LOT NUMBER	71F
BEDROOMS	3
BATHS	2.5
SQFT	1623
GARAGE	1
MODEL	2 STOREY TOWN

HAYHOE™
— HOMES —



SALES PROFESSIONAL

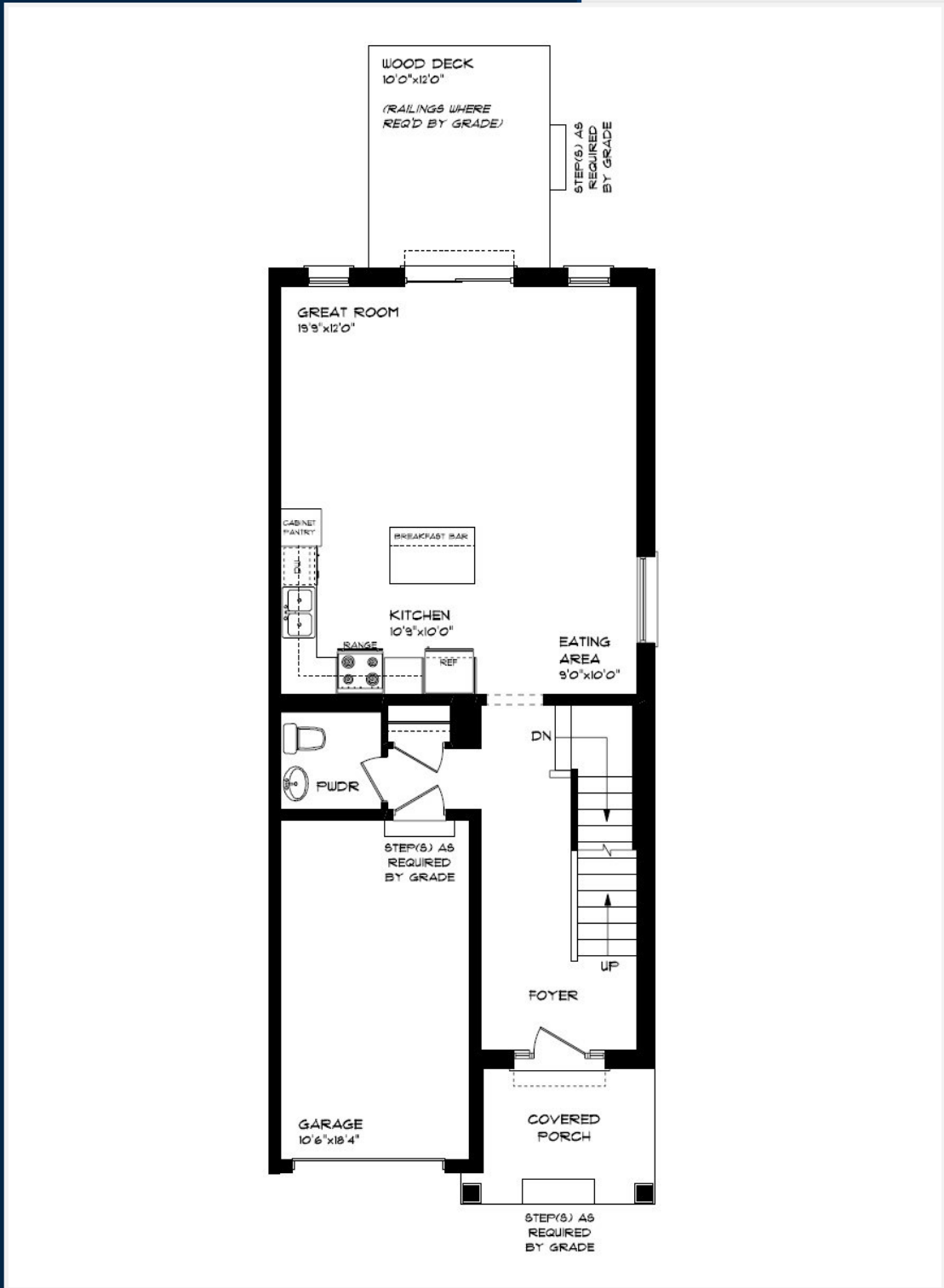
DAVE MATTHEWS

519.633.9215

dave.matthews@hayhoehomes.com

MAIN FLOOR

219 RENAISSANCE DR, ST. THOMAS



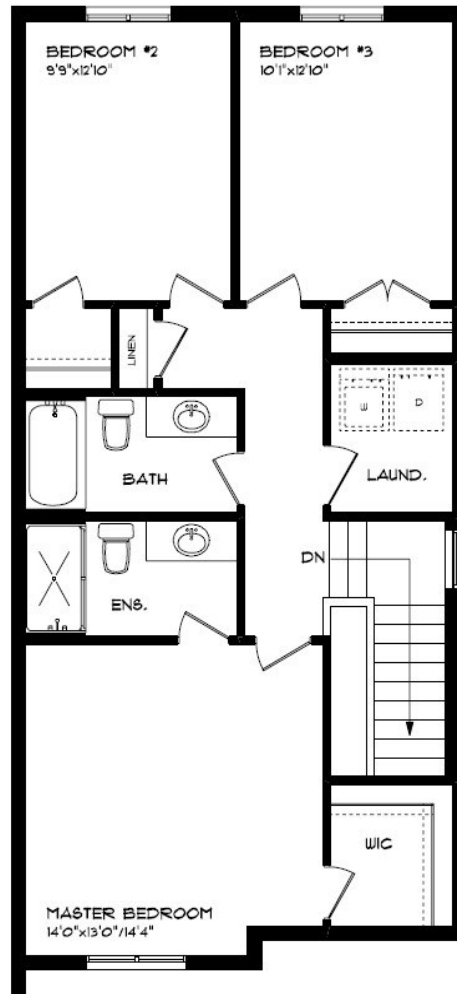
MAIN FLOOR:
APPROX 768 SQFT

- SINGLE CAR GARAGE
- KITCHEN ISLAND
- VINYL PLANK FLOORING
- QUARTZ COUNTERTOPS

HAYHOETM
— HOMES —

SECOND FLOOR

219 RENAISSANCE DR, ST. THOMAS



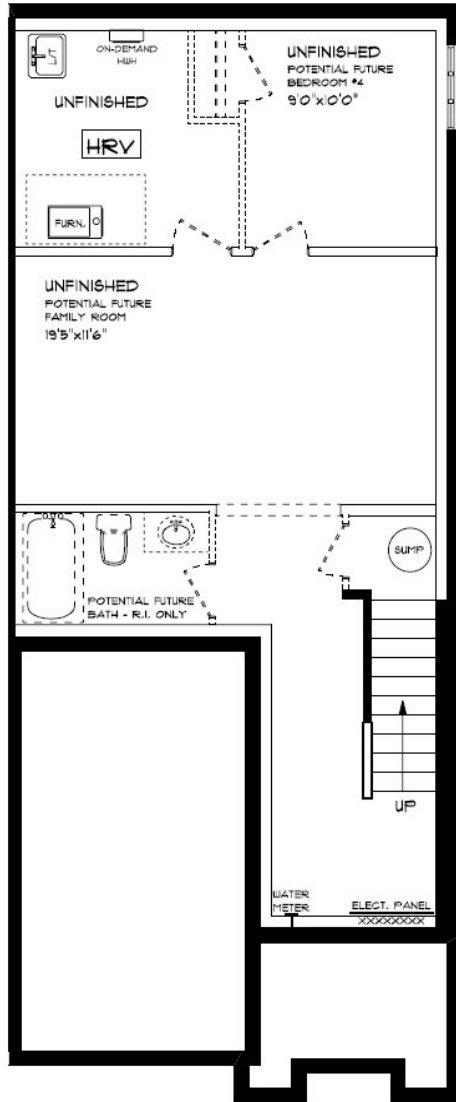
SECOND FLOOR:
APPROX 855 SQFT

SECOND FLOOR LAUNDRY
PROFESSIONALLY DESIGNED
CARPET FLOORING
VINYL PLANK FLOORING
WALK-IN CLOSET

HAYHOE™
— HOMES —

BASEMENT

219 RENAISSANCE DR, ST. THOMAS



BASEMENT:
UNFINISHED

AIR CONDITIONING
GAS FURNACE WITH HRV
HUMIDIFIER
NEW HOME WARRANTY

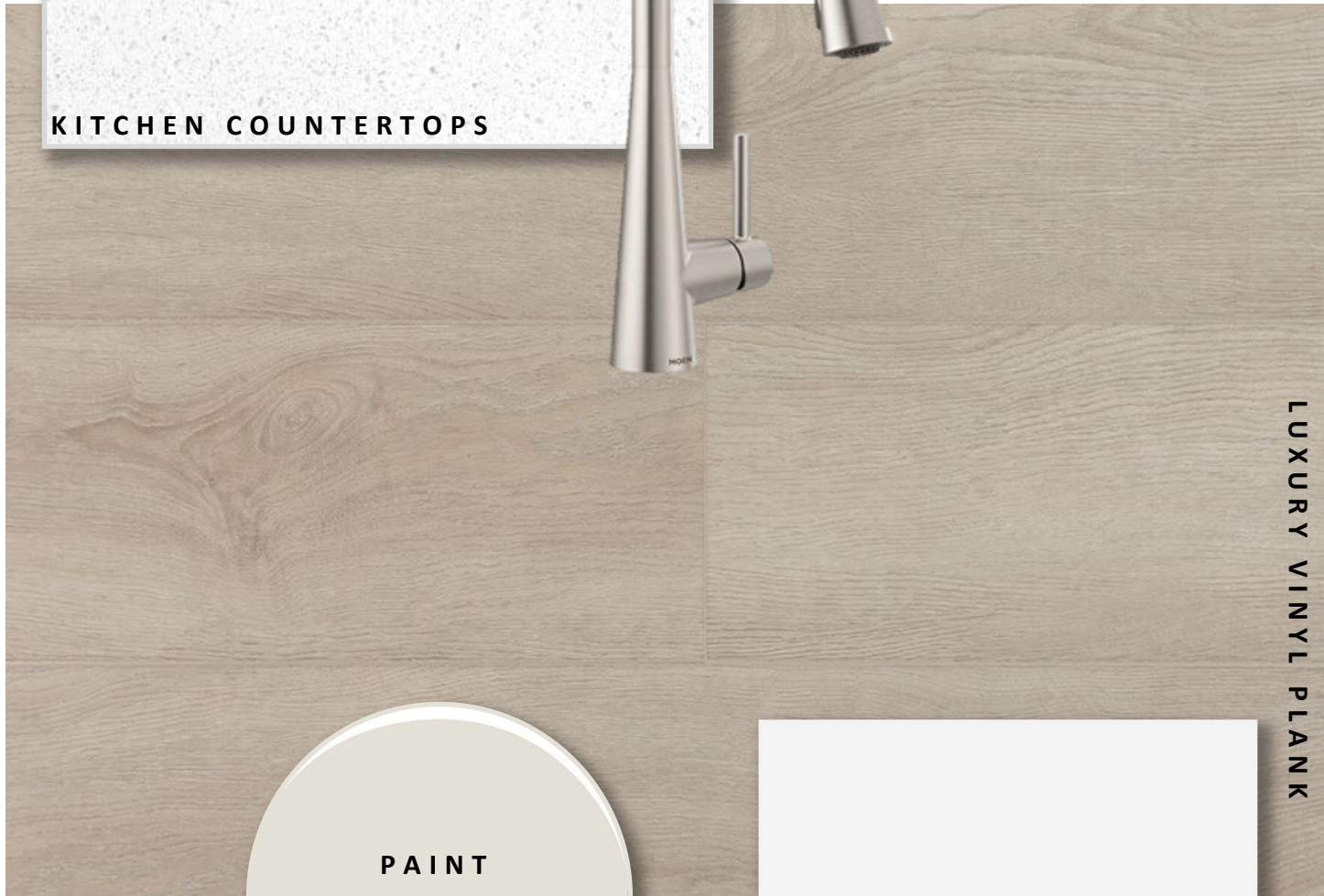
HAYHOE™
— HOMES —

INTERIOR FINISHES

219 RENAISSANCE



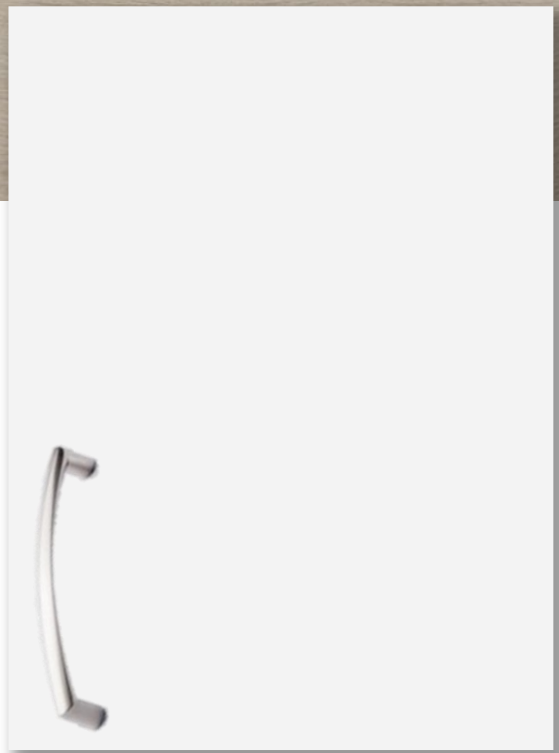
KITCHEN COUNTERTOPS



LUXURY VINYL PLANK



PAIN
T COLOUR



KITCHEN
CABINETS

ISLAND
PENDANTS



FOYER
FIXTURE



HAYHOE™
— HOMES —

INTERIOR FINISHES

219 RENAISSANCE

INTERIOR DOOR STYLE

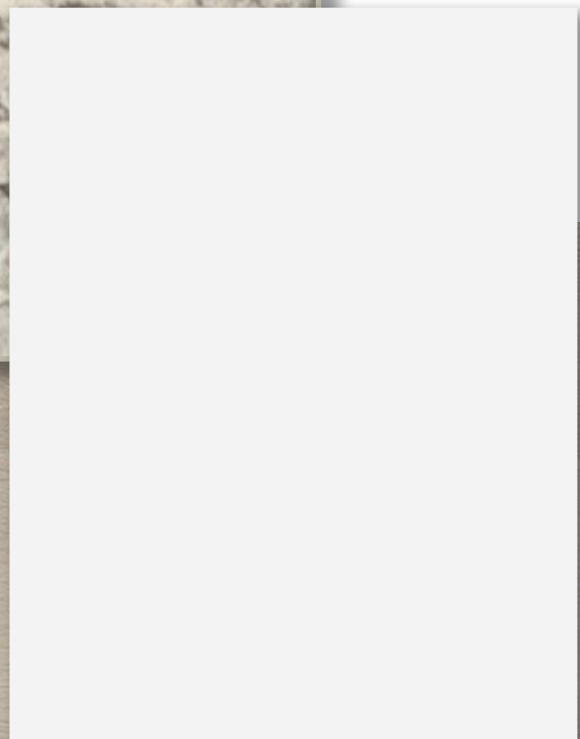
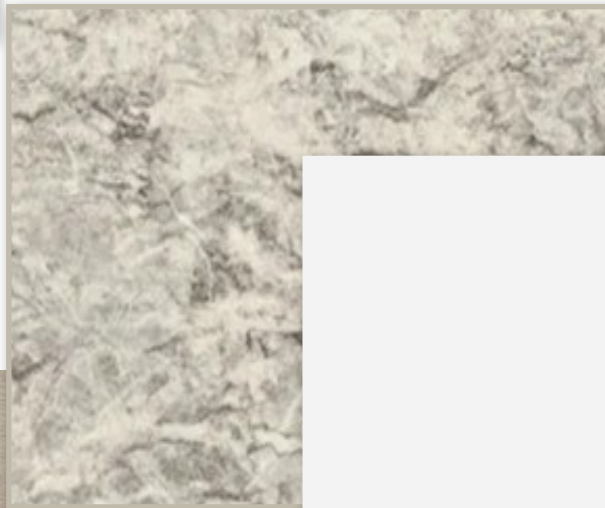


CARPET



BATHROOM
COUNTERTOP

BATHROOM
CABINERY



LUXURY VINYL PLANK

