

INVENTORY HOME



39 MARTIN STREET

NORTHCREST ESTATES, TILLSONBURG

THE DETAILS

PRICE	\$ 649,900
CLOSING DATE	AVAILABLE NOW
LOT NUMBER	96, PHASE 2
BEDROOMS	2
BATHS	2
SQFT	1444
GARAGE	2
MODEL	GLENMORE

HAYHOE™
—HOMES—



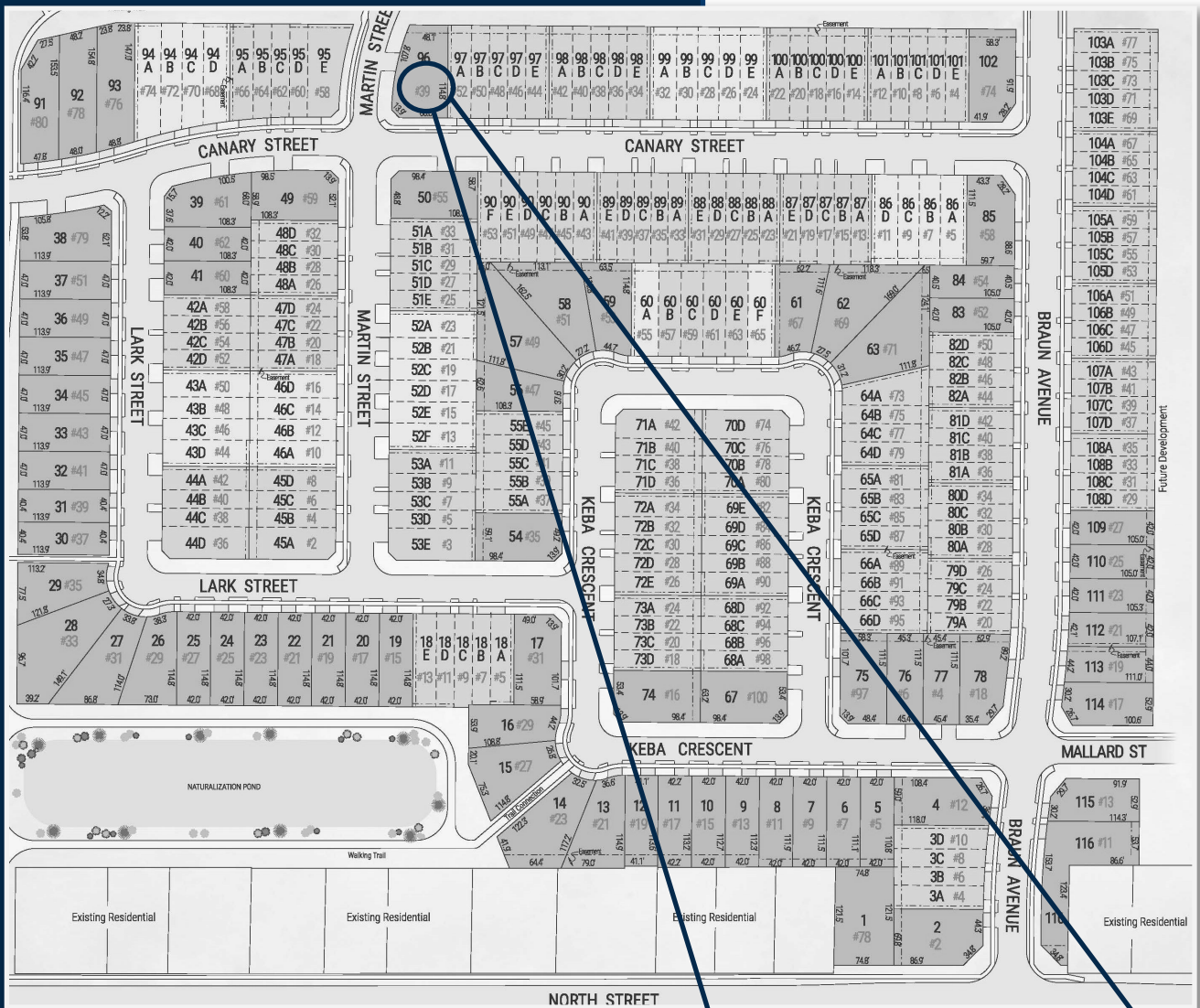
SALES PROFESSIONAL

EMMA SMITH

519.409.1474

emma.smith@hayhoehomes.com

SITE PLAN



39 MARTIN

EXTERIOR FEATURES:

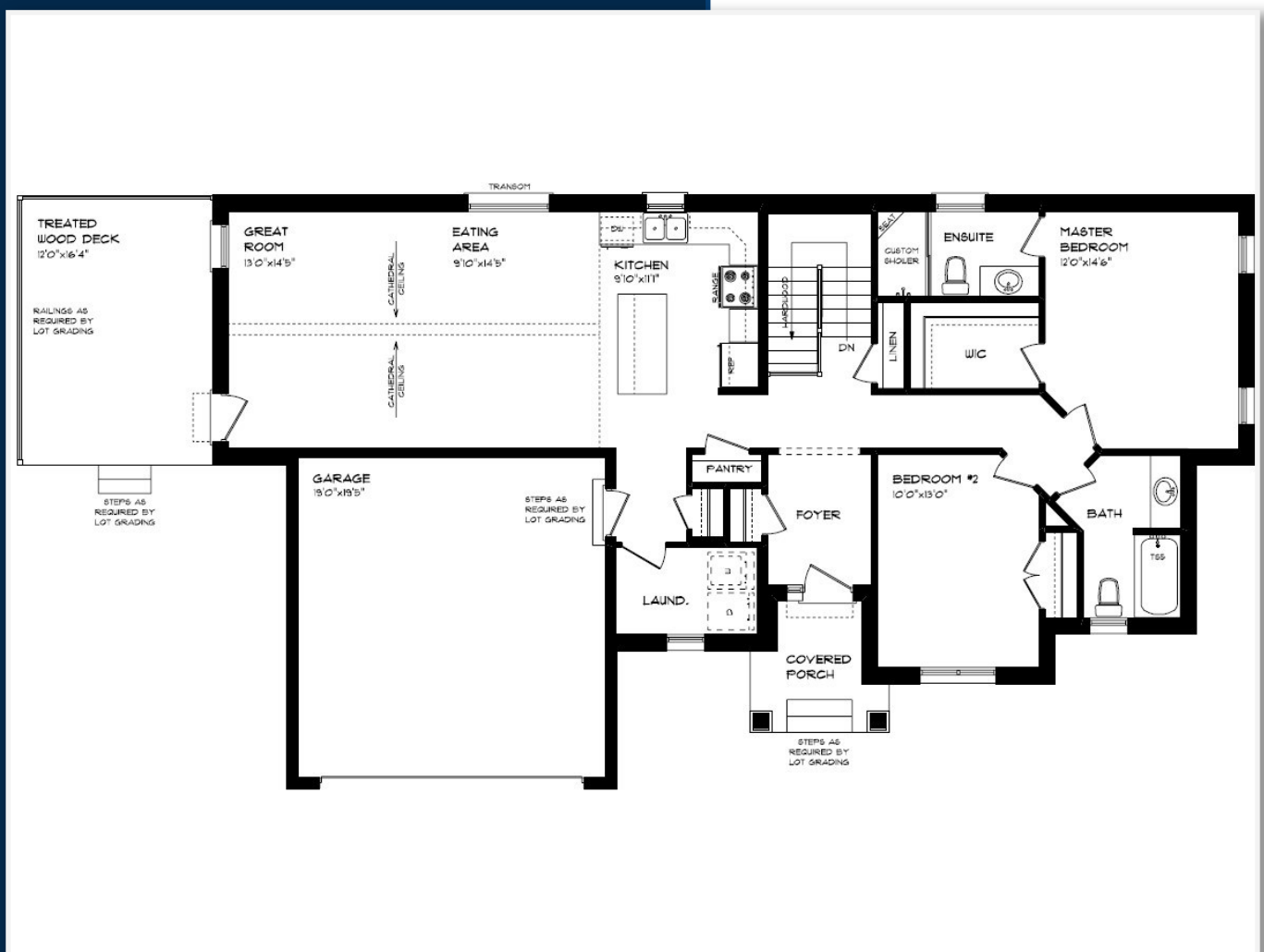
- KEYLESS ENTRY
- TREATED WOOD DECK
- BBQ GAS LINE
- ASPHALT DRIVEWAY
- WALKING TRAILS

HAYHOE™
HOMES

NORTHCREST
ESTATES
PHASE 2

MAIN FLOOR

39 MARTIN STREET,
TILLSONBURG



LUXURY VINYL PLANK FLOORING

HARDWOOD STAIRS

CUSTOM TILED SHOWER

CATHEDRAL CEILING

CUSTOM CABINETRY

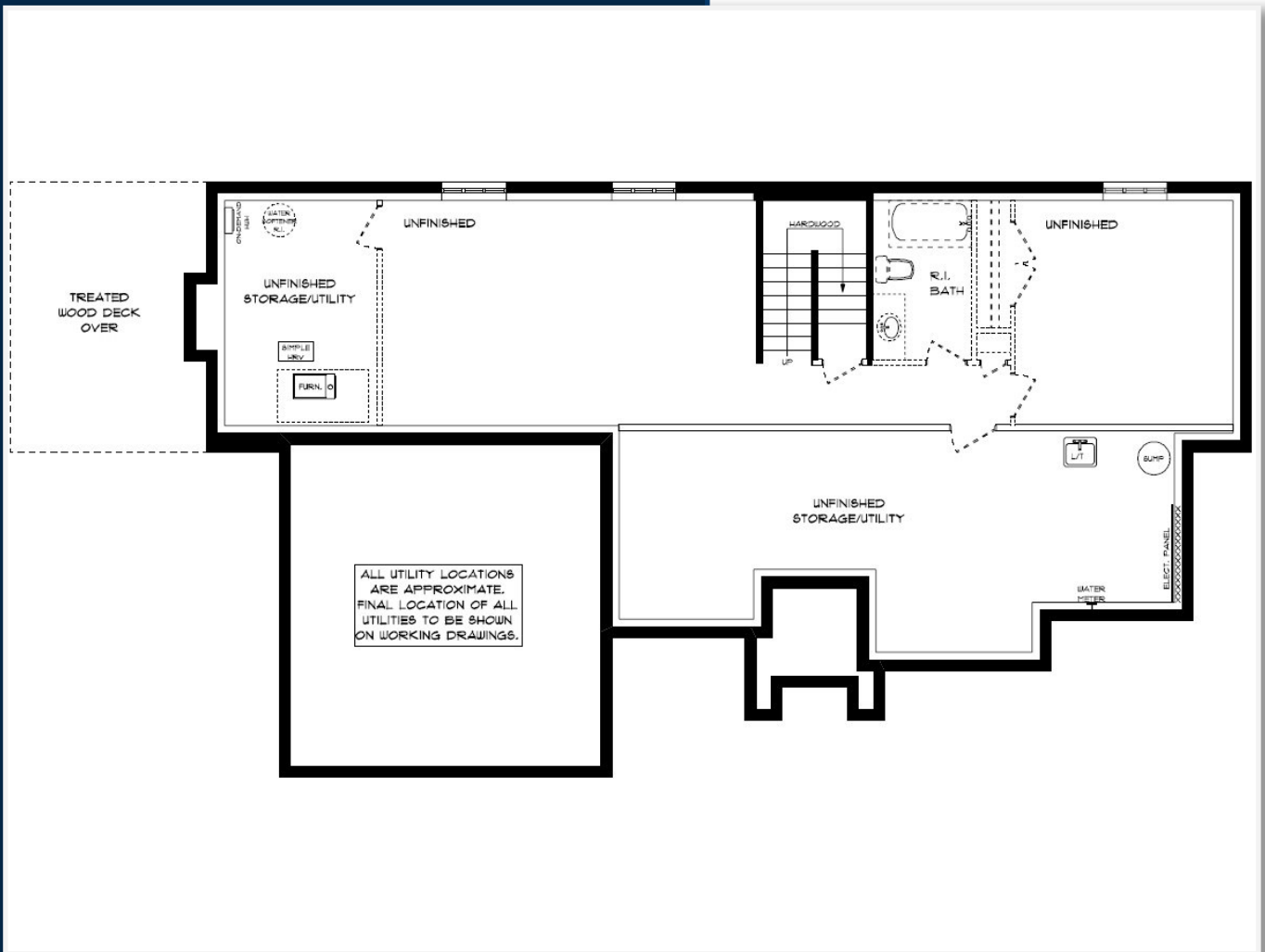
MAIN FLOOR LAUNDRY

MAIN FLOOR:
APPROX. 1444 SQFT

HAYHOE™
— HOMES —

BASEMENT

39 MARTIN STREET,
TILLSONBURG



AIR CONDITIONING
GAS FURNACE WITH HRV
HUMIDIFIER
NEW HOME WARRANTY

BASEMENT:
UNFINISHED

HAYHOE™
— HOMES —

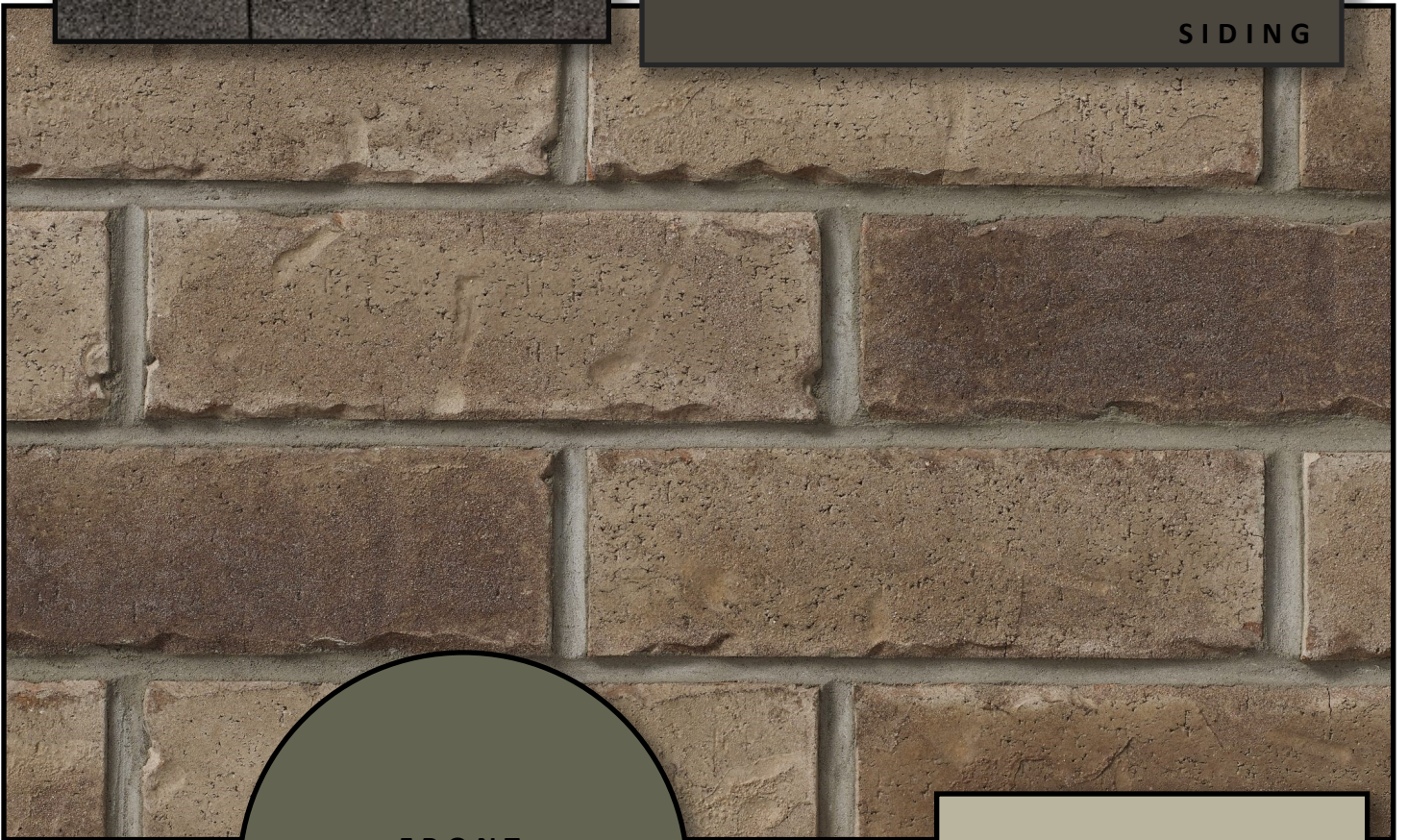
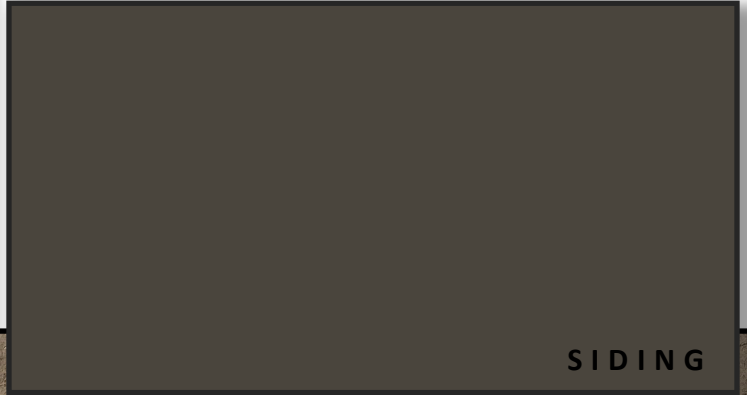
EXTERIOR FINISHES

SHINGLES



39 Martin St.

SIDING

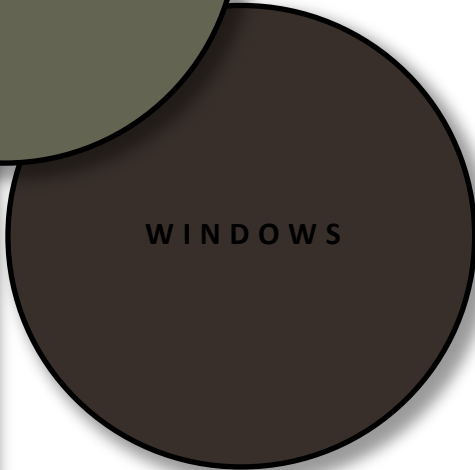


BRICK

FRONT
DOOR



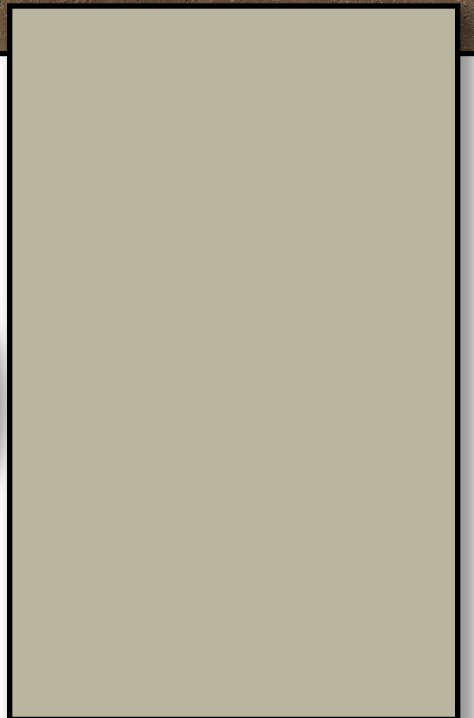
WINDOWS



GARAGE DOOR



ALUMINUM

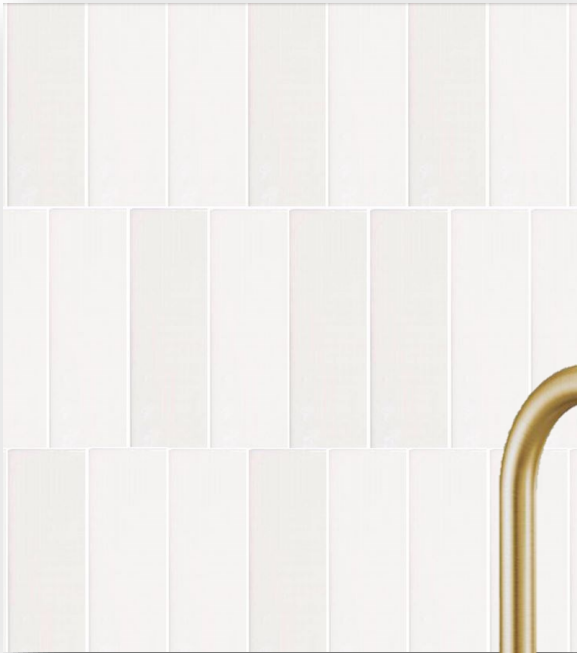


HAYHOE™
— HOMES —

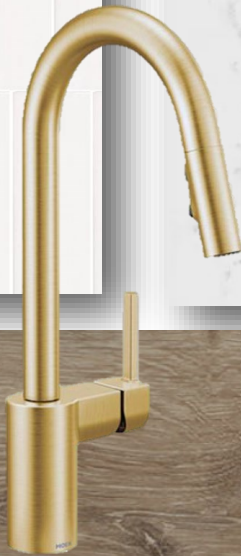
INTERIOR FINISHES

39 Martin St.

KITCHEN BACKSPLASH



KITCHEN COUNTERTOPS



LUXURY VINYL PLANK



PAINT
COLOUR



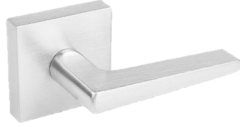
KITCHEN
CABINETRY

HAYHOE™
HOMES

INTERIOR FINISHES

39 Martin St.

INTERIOR DOOR STYLE



MAIN BATH
CABINETRY



MAIN BATH
COUNTERTOP



LUXURY VINYL PLANK



ENSUITE
COUNTERTOP



ENSUITE
CABINETRY

HAYHOE™
—HOMES—

ENSUITE CUSTOM
SHOWER

PRICE, PRODUCTS, COLOURS & FEATURES ARE SUBJECT TO

CHANGE WITHOUT NOTICE.

CREATED JAN 21, 2025