

T O W N H O M E

PREMIUM FEATURES



26 CANARY STREET

NORTHCREST TOWNS, TILLSONBURG

THE DETAILS

PRICE	\$ 530,000
CLOSING DATE	JANUARY 30, 2025
LOT NUMBER	99D, PHASE 2
BEDROOMS	2+1
BATHS	3
SQFT	1711
GARAGE	1
MODEL	1 STOREY TOWN

HAYHOE™
— HOMES —



SALES PROFESSIONAL

EMMA SMITH

519.409.1474

emma.smith@hayhoehomes.com

SITE PLAN

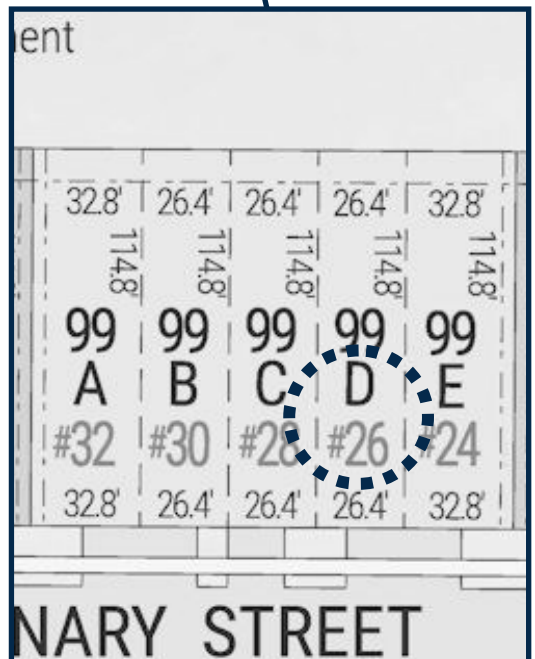


26 CANARY

EXTERIOR FEATURES:

- KEYLESS ENTRY
- TREATED WOOD DECK
- BBQ GAS LINE
- ASPHALT DRIVEWAY
- WALKING TRAILS

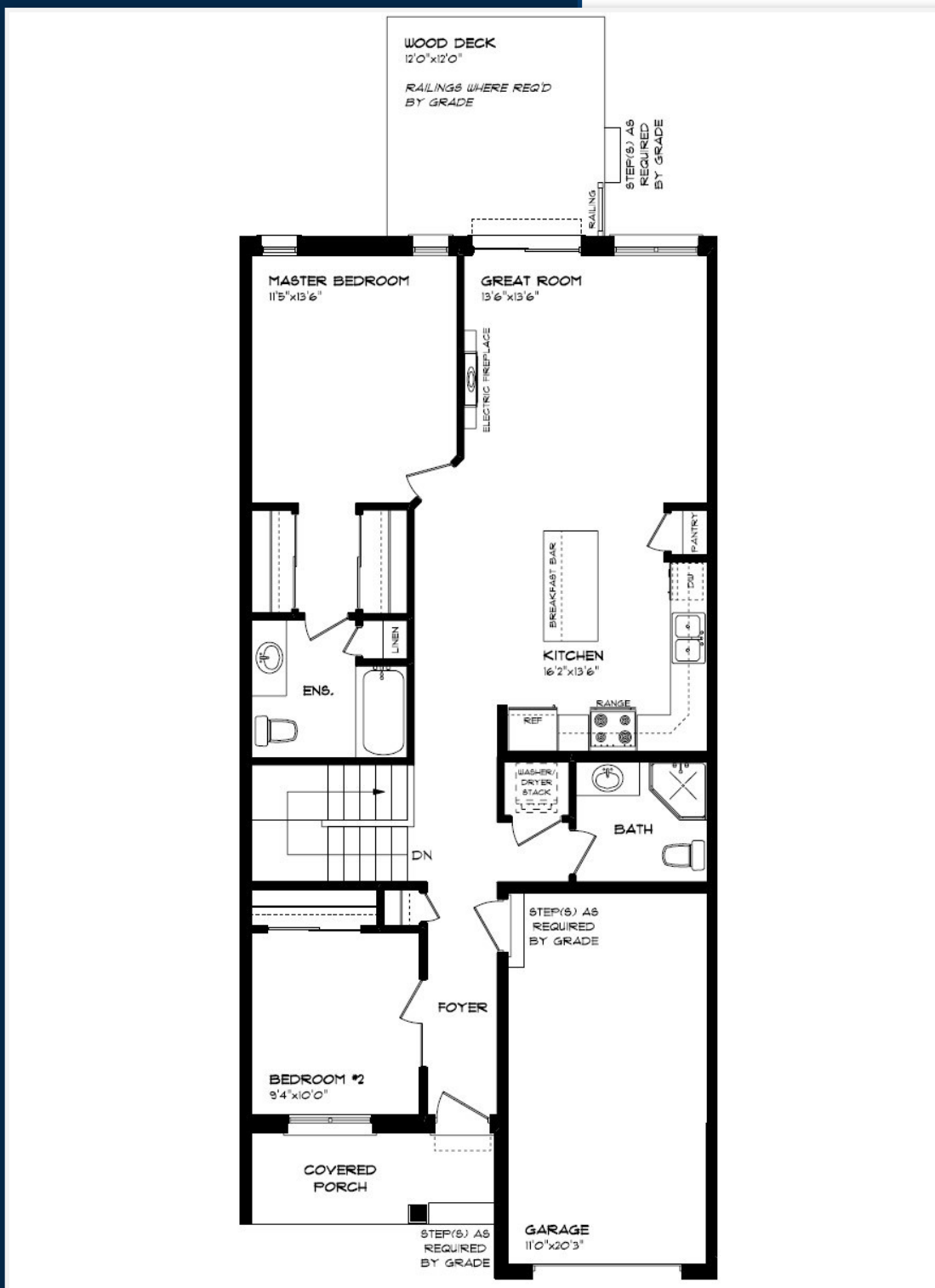
HAYHOE™
HOMES



NORTHCREST
TOWNS

MAIN FLOOR

26 CANARY STREET, TILLSONBURG



SINGLE CAR GARAGE

KITCHEN ISLAND

VINYL PLANK FLOORING

ELECTRIC FIREPLACE

QUARTZ COUNTERTOPS

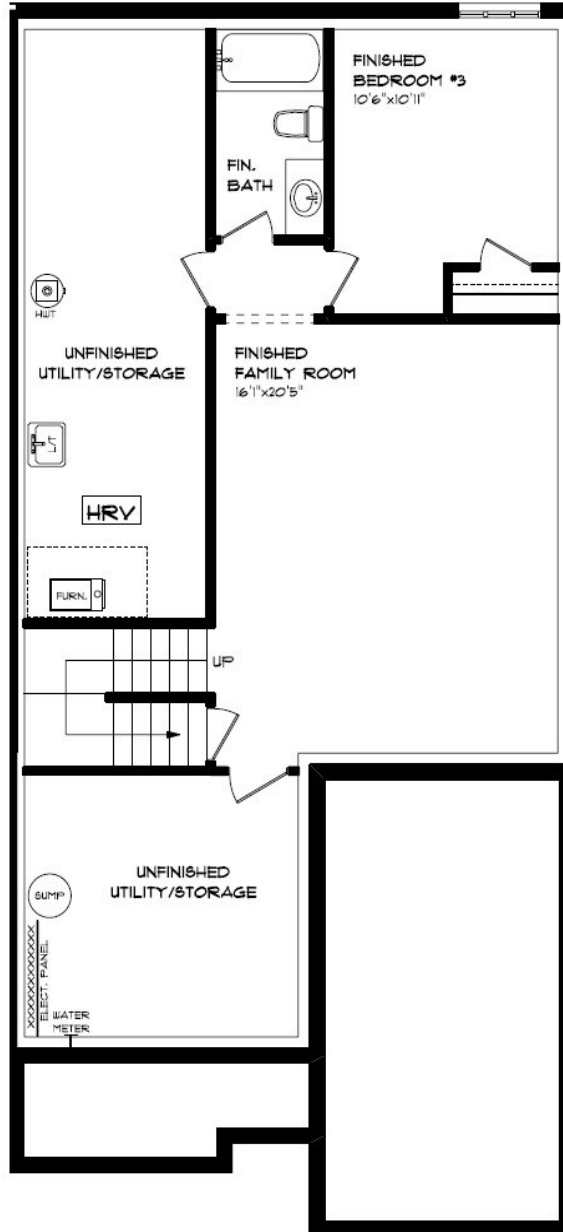
KITCHEN BACKSPLASH

HAYHOETM
— HOMES —

MAIN FLOOR:
APPROX 1132 SQFT

BASEMENT

26 CANARY STREET, TILLSONBURG



- CARPET FLOORING
- VINYL PLANK FLOORING
- AIR CONDITIONING
- GAS FURNACE WITH HRV
- HUMIDIFIER
- NEW HOME WARRANTY

BASEMENT:
APPROX 579 SQFT

HAYHOE™
— HOMES —

INTERIOR FINISHES

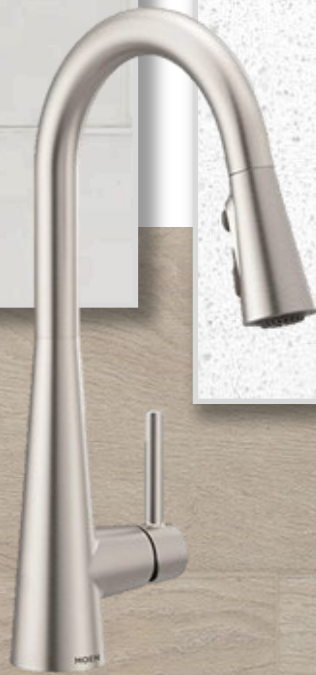
KITCHEN BACKSPLASH



26 CANARY



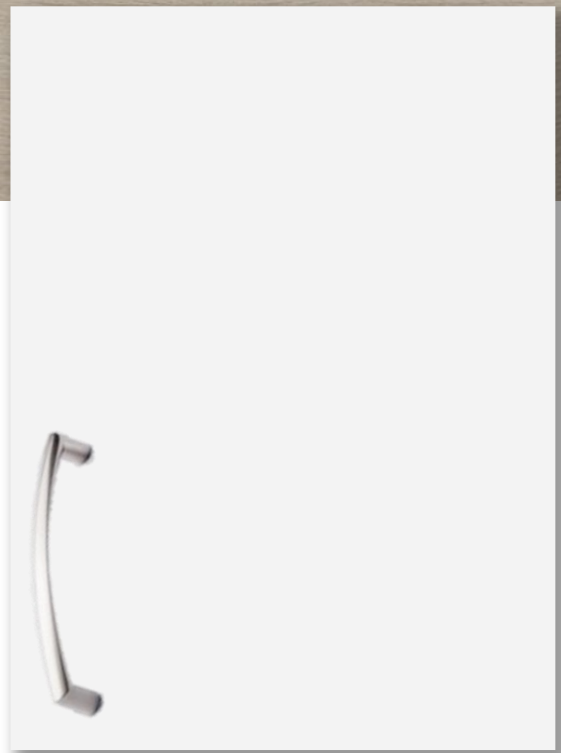
KITCHEN COUNTERTOPS



LUXURY VINYL PLANK



PAIN
COLOUR



KITCHEN
CABINETS

ISLAND PENDANTS



FOYER
FIXTURE

HAYHOE™
•HOMES•

INTERIOR FINISHES

26 CANARY

INTERIOR DOOR STYLE

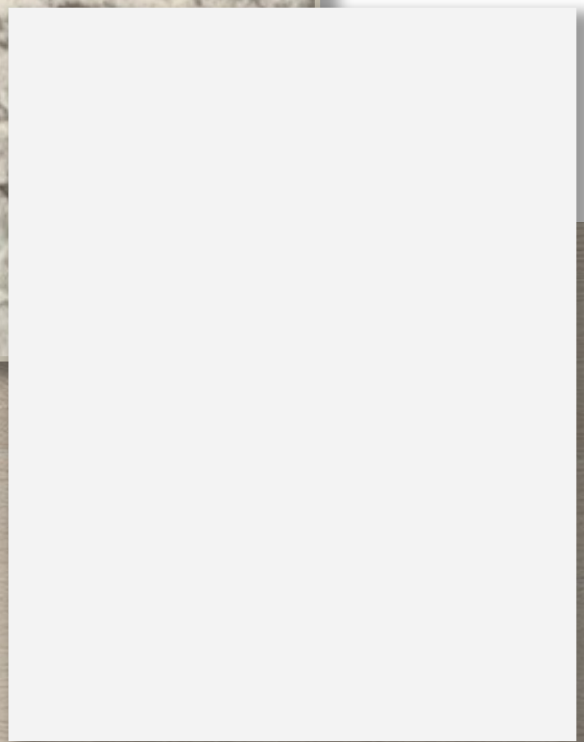


CARPET



BATHROOM
COUNTERTOP

BATHROOM
CABINERY



LUXURY VINYL PLANK

