

# T O W N H O M E

PREMIUM FEATURES



## 24 CANARY STREET

NORTHCREST TOWNS, TILLSONBURG

### THE DETAILS

PRICE	\$ 560,000
CLOSING DATE	JANUARY 31, 2025
LOT NUMBER	99E, PHASE 2
BEDROOMS	2+1
BATHS	3
SQFT	1781
GARAGE	1
MODEL	1 STOREY TOWN

**HAYHOE™**  
— HOMES —



**SALES PROFESSIONAL**

EMMA SMITH

519.409.1474

[emma.smith@hayhoehomes.com](mailto:emma.smith@hayhoehomes.com)

# SITE PLAN

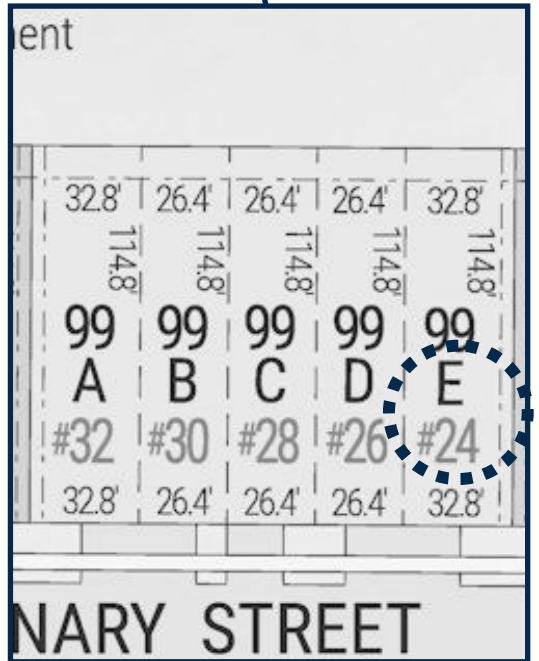


## 24 CANARY

### EXTERIOR FEATURES:

- KEYLESS ENTRY
- TREATED WOOD DECK
- BBQ GAS LINE
- ASPHALT DRIVEWAY
- WALKING TRAILS

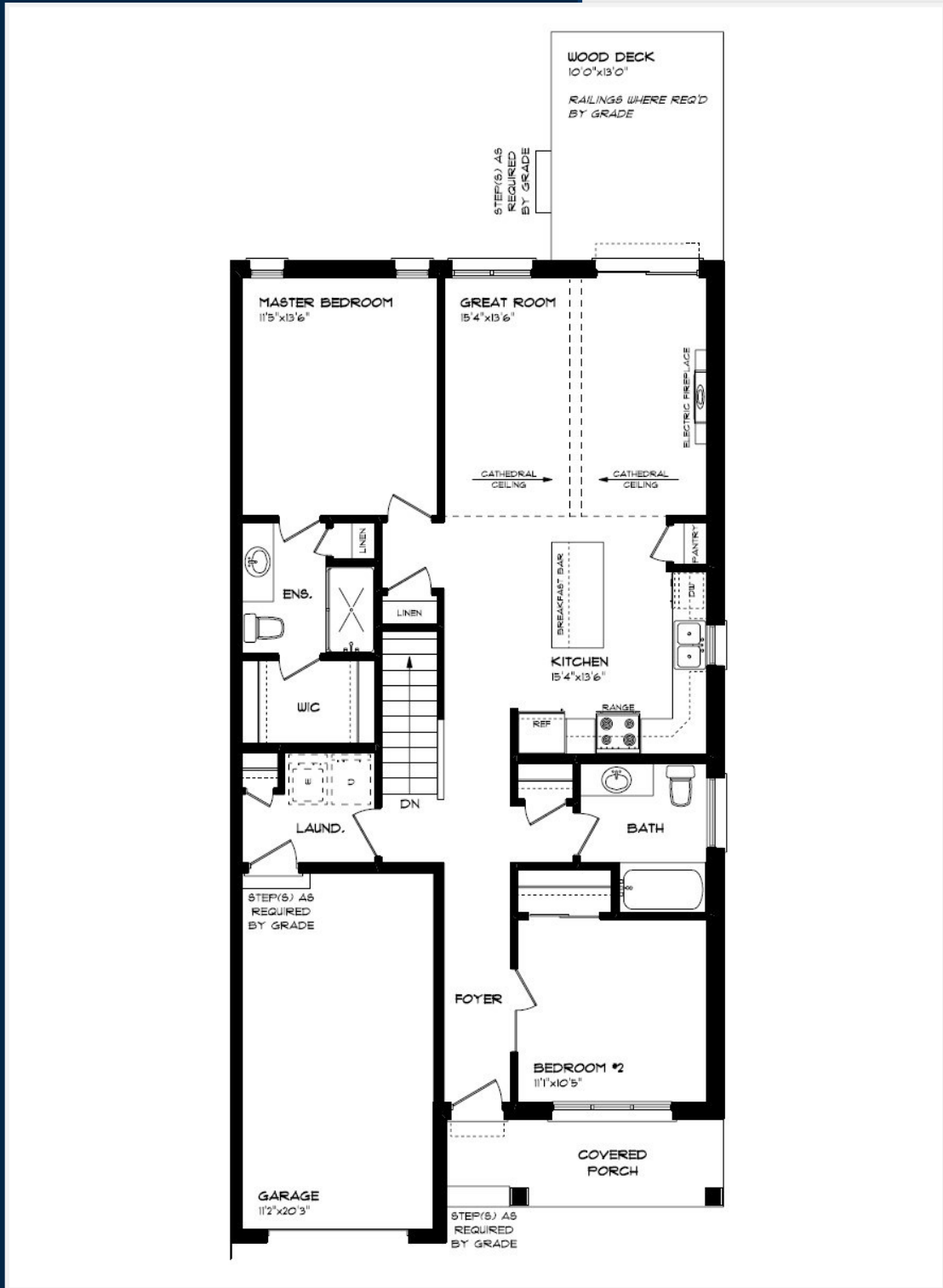
**HAYHOE**<sup>TM</sup>  
HOMES



**NORTHCREST**  
**TOWNS**

# MAIN FLOOR

24 CANARY STREET, TILLSONBURG



SINGLE CAR GARAGE

KITCHEN ISLAND

VINYL PLANK FLOORING

ELECTRIC FIREPLACE

QUARTZ COUNTERTOPS

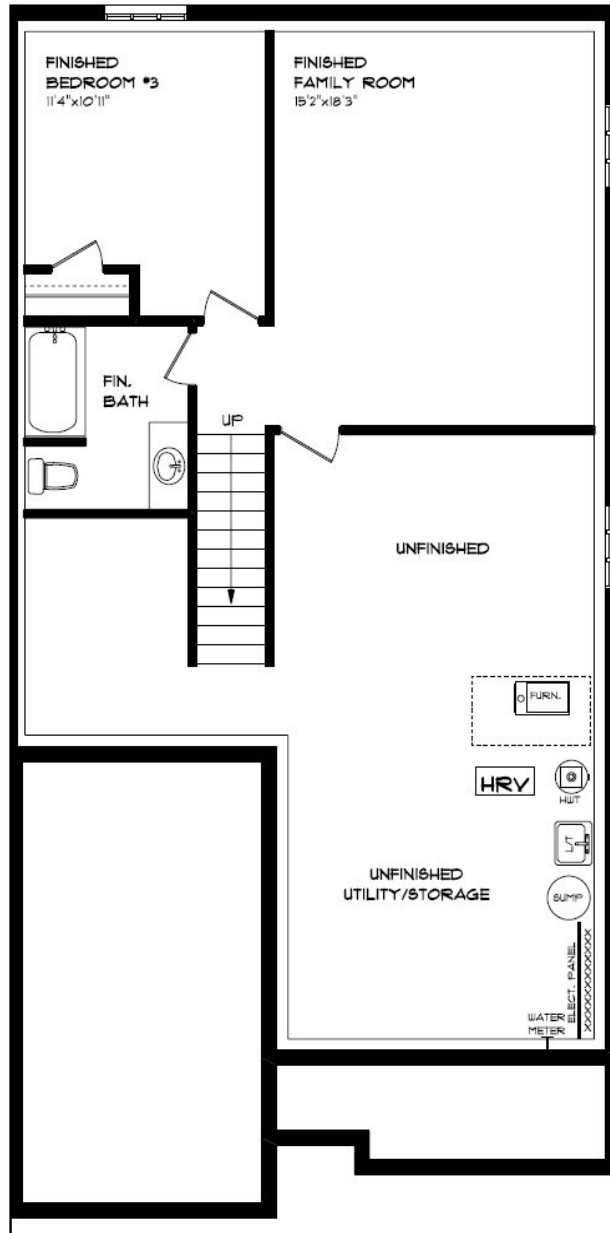
KITCHEN BACKSPLASH

MAIN FLOOR:  
APPROX 1225 SQFT

**HAYHOE**<sup>TM</sup>  
— HOMES —

# BASEMENT

24 CANARY STREET, TILLSONBURG



- CARPET FLOORING
- VINYL PLANK FLOORING
- AIR CONDITIONING
- GAS FURNACE WITH HRV
- HUMIDIFIER
- NEW HOME WARRANTY

BASEMENT:  
APPROX 556 SQFT

**HAYHOE™**  
— HOMES —

# INTERIOR FINISHES

KITCHEN BACKSPLASH



## 24 CANARY



KITCHEN COUNTERTOPS



LUXURY VINYL PLANK



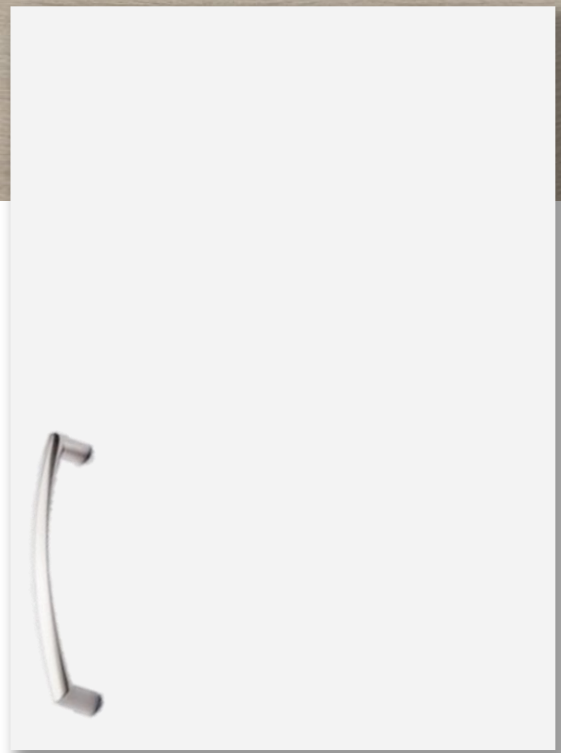
PAIN  
COLOUR



ISLAND PENDANTS



FOYER  
FIXTURE



KITCHEN  
CABINETS

**HAYHOE™**  
•HOMES•

# INTERIOR FINISHES

## 24 CANARY

INTERIOR DOOR STYLE

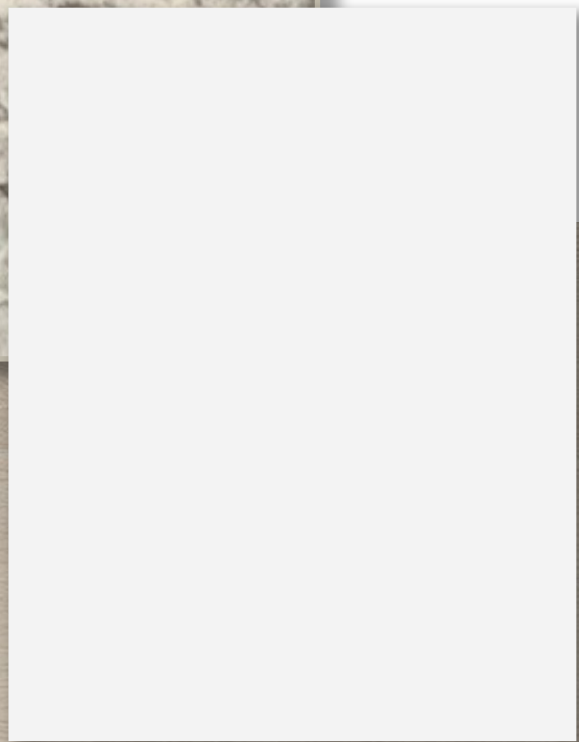
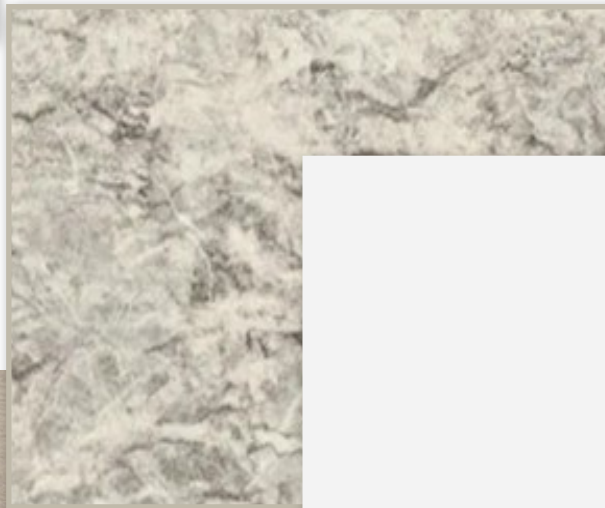


CARPET



BATHROOM  
COUNTERTOP

BATHROOM  
CABINERY



LUXURY VINYL PLANK

