

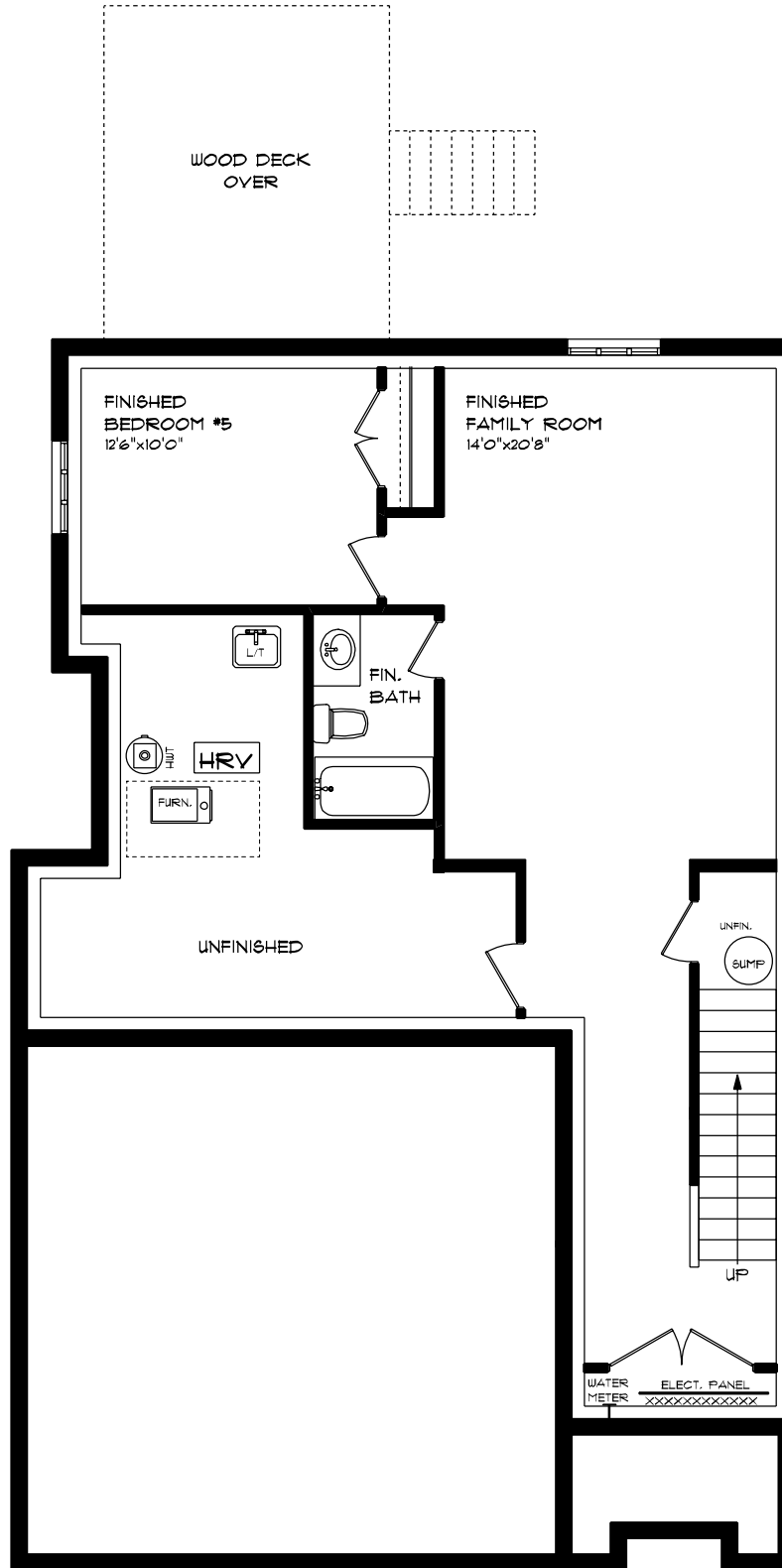


UNIT #10
MUN. #19 - #49 ROYAL DORNOCH DRIVE

FRONT ELEVATION
APPROX. 2,937 SQ. FT. TOTAL

This plan is the property of Inghos Homes and any reproduction of this plan, its concepts or ideas, is strictly prohibited. Plans and specifications are approximate and are subject to change without notice. Finished area and room dimensions will change depending on front elevation selection.

E. & O.E.

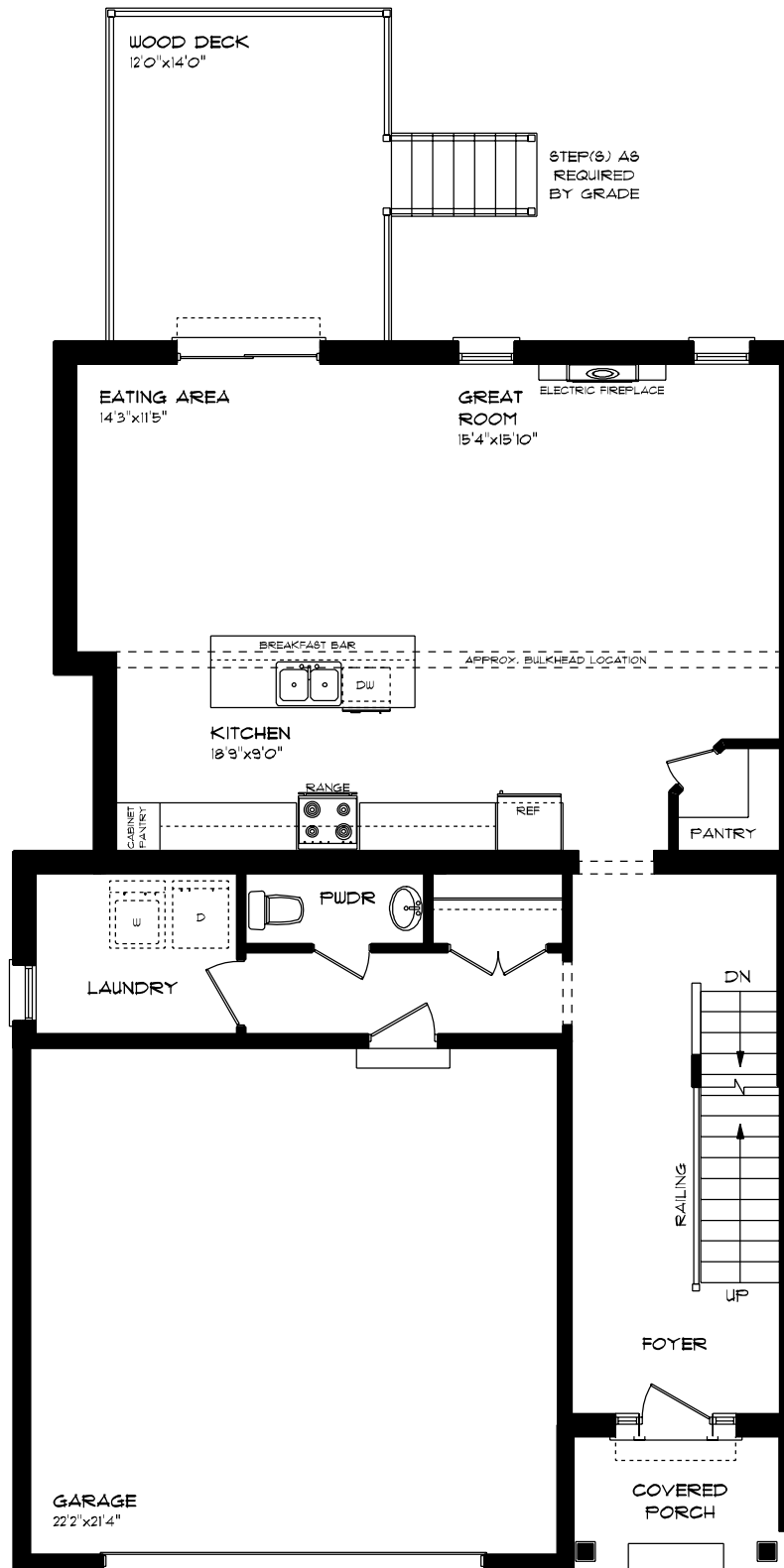


UNIT #10
 MUN. #19 - #49 ROYAL DORNOCH DRIVE

LOWER LEVEL
 APPROX. 693 SQ. FT.

This plan is the property of H-shore Homes and any reproduction of this plan, its concepts or ideas, is strictly prohibited. Plans and specifications are approximate and are subject to change without notice. Finished area and room dimensions will change depending on front elevation selection.

E. & O.E.

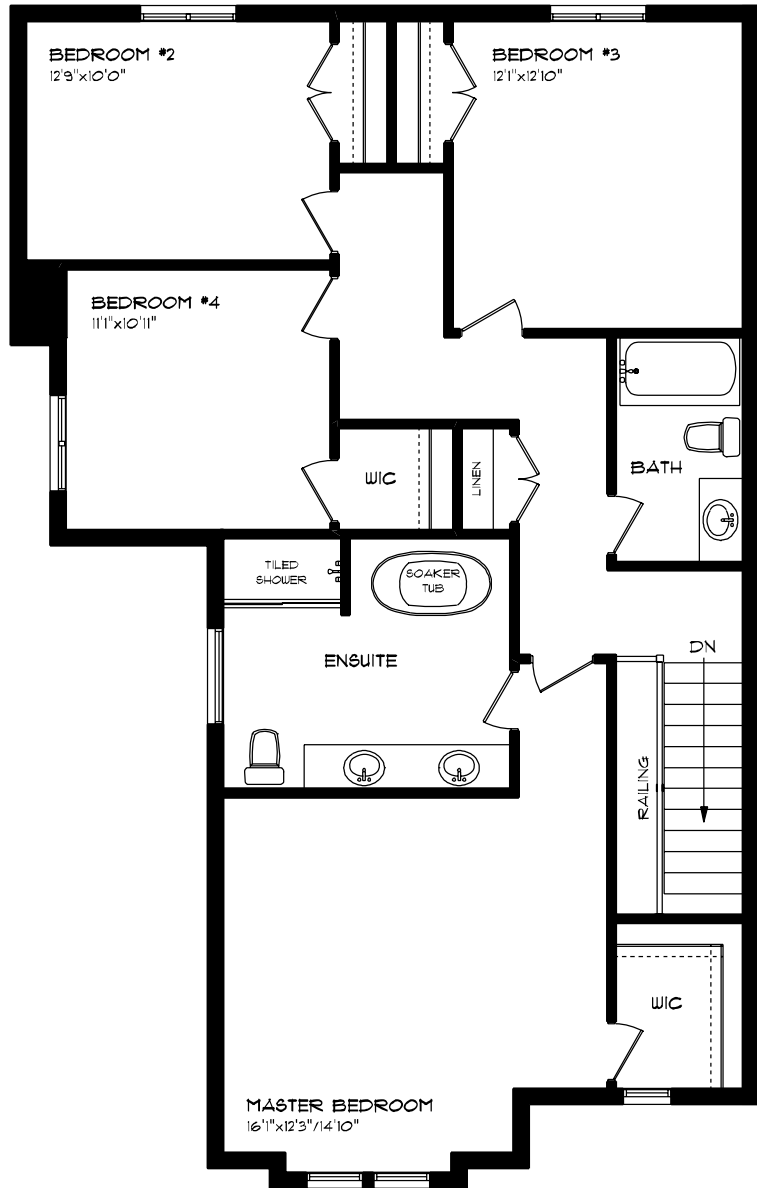


UNIT #10
 MUN. #19 - #49 ROYAL DORNOCH DRIVE

MAIN FLOOR PLAN
 APPROX. 1,089 SQ. FT.

This plan is the property of Inghose Homes and any reproduction of this plan, its concepts or ideas, is strictly prohibited. Plans and specifications are approximate and are subject to change without notice. Finished area and room dimensions will change depending on front elevation selection.

E. & O.E.



UNIT #10
 MUN. #19 - #49 ROYAL DORNOCH DRIVE

SECOND FLOOR PLAN
 APPROX. 1,204 SQ. FT.

This plan is the property of Hajjese Homes and any reproduction of this plan, its concepts or ideas, is strictly prohibited. Plans and specifications are approximate and are subject to change without notice. Finished area and room dimensions will change depending on front elevation selection.

E. & O.E.