

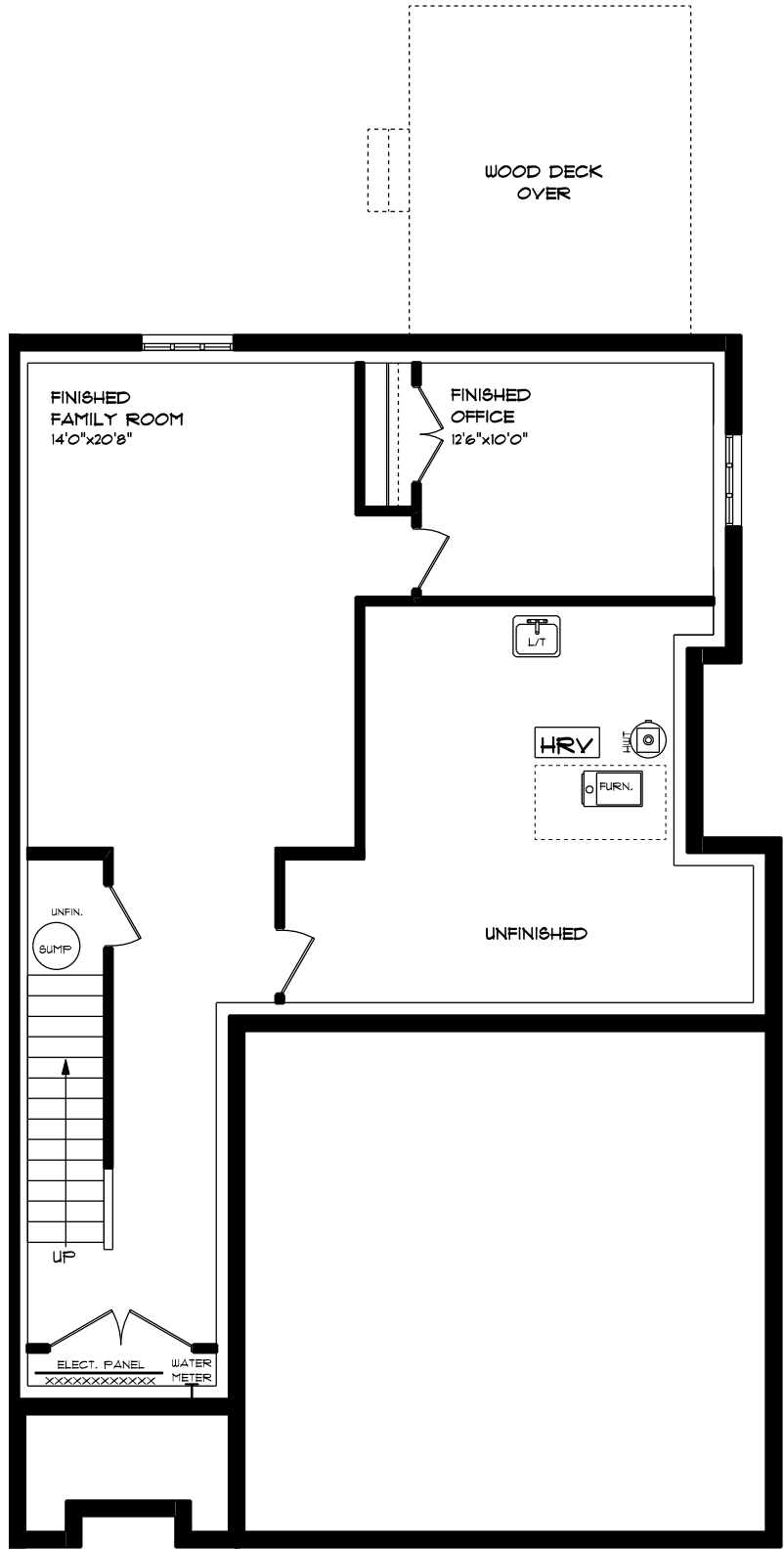


UNIT #33
MUN. #16 - #49 ROYAL DORNOCH DRIVE

FRONT ELEVATION
APPROX. 2,937 SQ. FT. TOTAL

This plan is the property of Hayco Homes and any reproduction of this plan, its concepts or ideas, is strictly prohibited. Plans and specifications are approximate and are subject to change without notice. Finished area and room dimensions will change depending on front elevation selection.

E. & O.E.

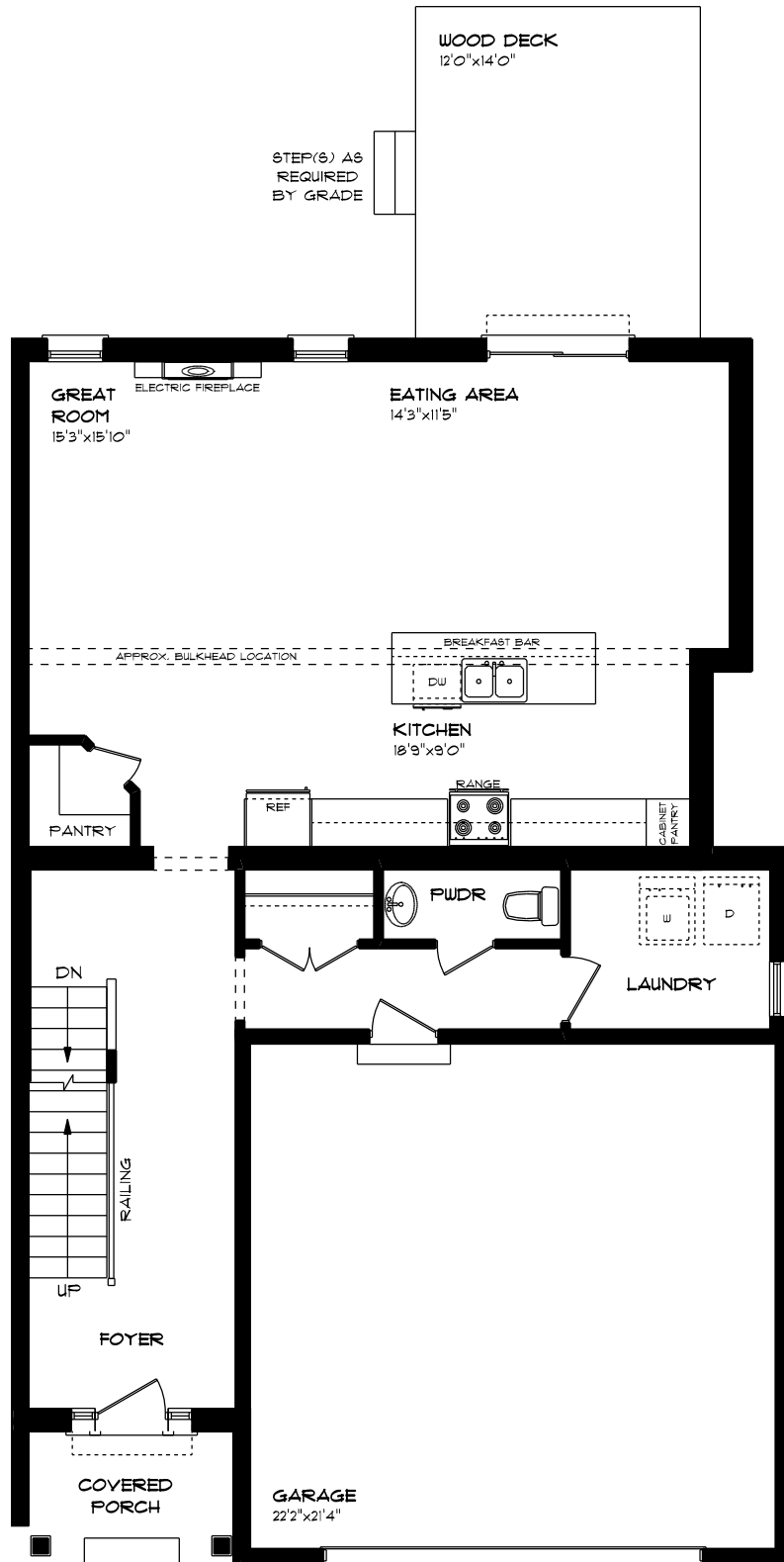


UNIT #33
MUN. #16 - #49 ROYAL DORNOCH DRIVE

LOWER LEVEL PLAN
APPROX. 644 SQ. FT.

This plan is the property of Hayhoe Homes and any reproduction of this plan, its concepts or ideas, is strictly prohibited. Plans and specifications are approximate and are subject to change without notice. Finished area and room dimensions will change depending on front elevation selection.

E. & O.E.

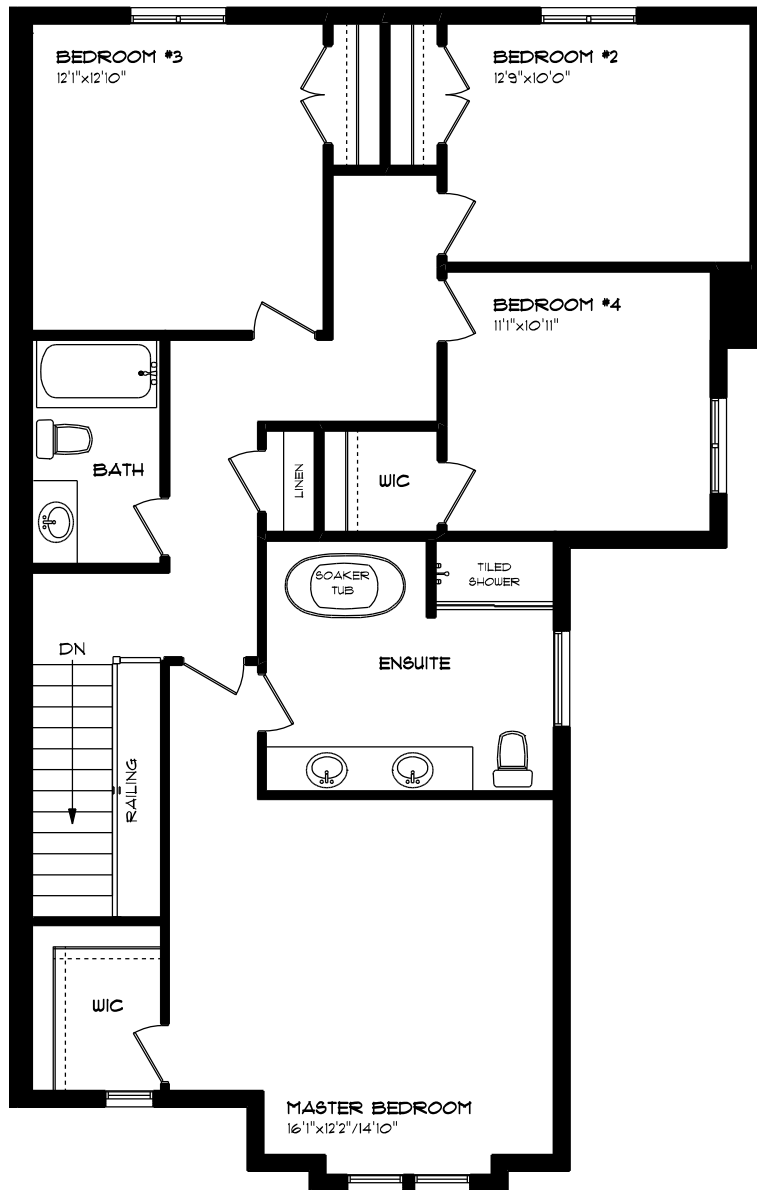


UNIT #33
 MUN. #16 - #49 ROYAL DORNOCH DRIVE

MAIN FLOOR PLAN
 APPROX. 1,089 SQ. FT.

This plan is the property of Hayhoe Homes and any reproduction of this plan, its concepts or ideas, is strictly prohibited. Plans and specifications are approximate and are subject to change without notice. Finished area and room dimensions will change depending on front elevation selection.

E. & O.E.



UNIT #33
 MUN. #16 - #49 ROYAL DORNOCH DRIVE

SECOND FLOOR PLAN
 APPROX. 1,204 SQ. FT.

This plan is the property of Hajhos Homes and any reproduction of this plan, its concepts or ideas, is strictly prohibited. Plans and specifications are approximate and are subject to change without notice. Finished area and room dimensions will change depending on trim elevation selection.

E. & O.E.