

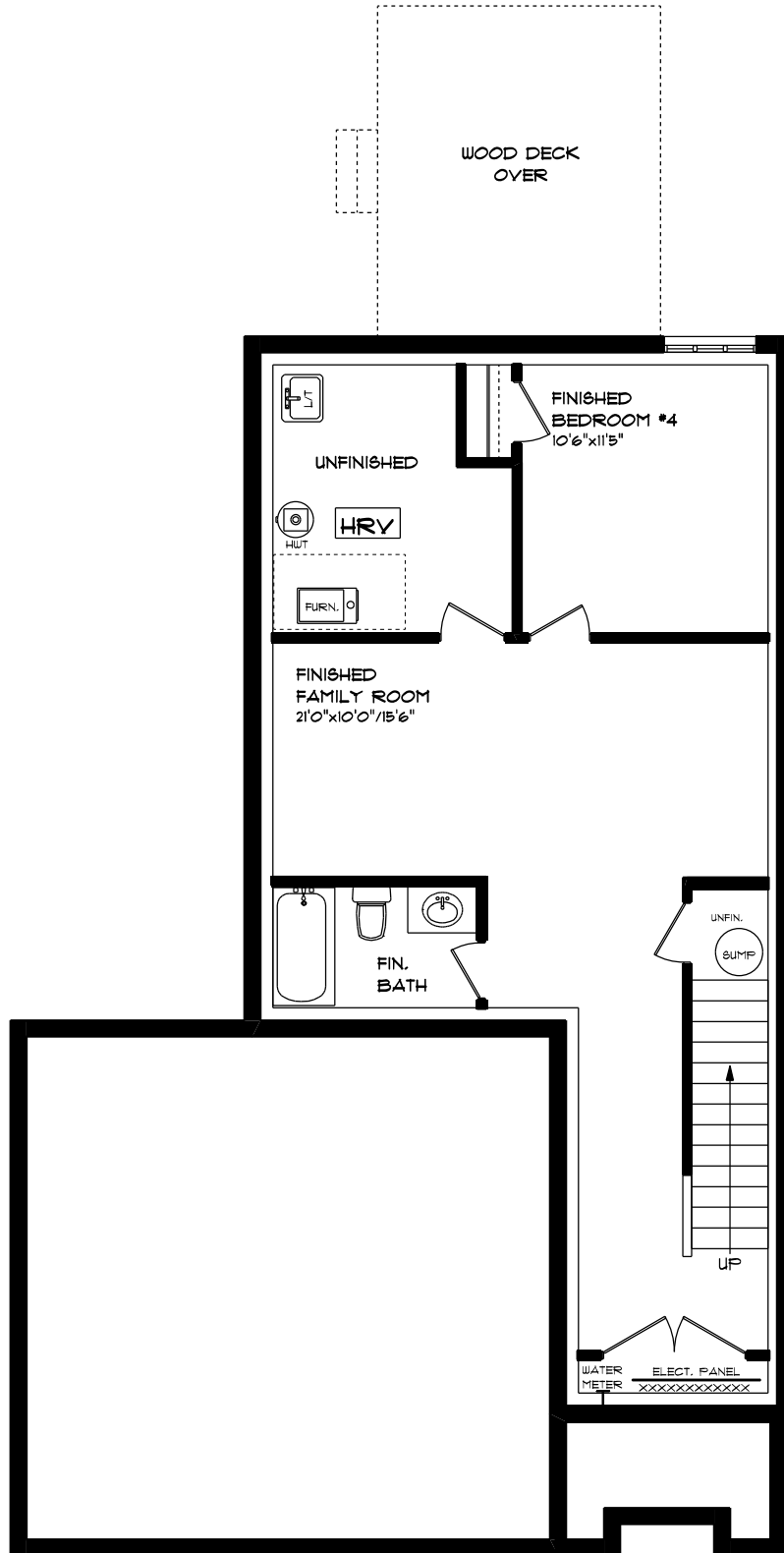


UNIT #36  
MUN. #10 - #49 ROYAL DORNOCH DRIVE

FRONT ELEVATION  
APPROX. 2,469 SQ. FT. TOTAL

This plan is the property of Haysco Homes and any reproduction of this plan, its concepts or ideas, is strictly prohibited. Plans and specifications are approximate and are subject to change without notice. Finished area and room dimensions will change depending on front elevation selection.

E. & O.E.

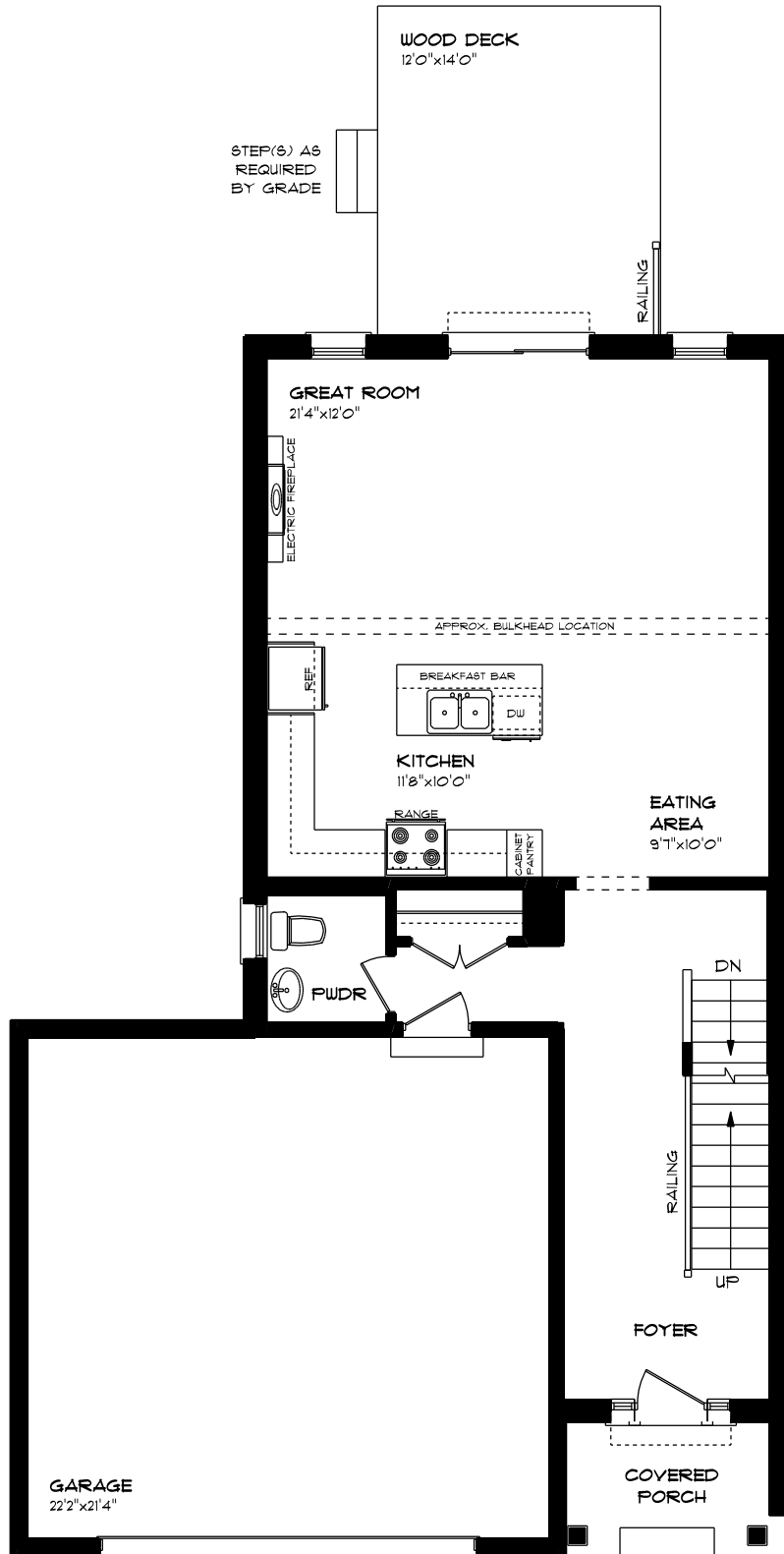


UNIT #36  
 MUN. #10 - #49 ROYAL DORNOCH DRIVE

LOWER LEVEL PLAN  
 APPROX. 591 SQ. FT.

This plan is the property of Hayhoe Homes and any reproduction of this plan, its concepts or ideas, is strictly prohibited. Plans and specifications are approximate and are subject to change without notice. Finished area and room dimensions will change depending on front elevation selection.

E. & O.E.

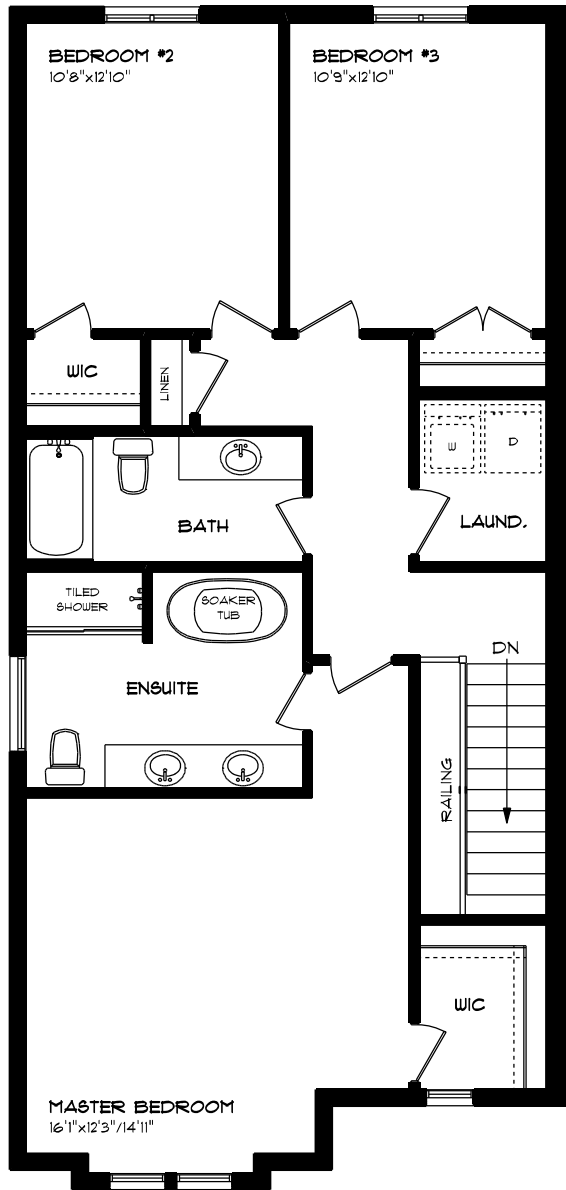


UNIT #36  
 MUN. #10 - #49 ROYAL DORNOCH DRIVE

MAIN FLOOR PLAN  
 APPROX. 844 SQ. FT.

This plan is the property of Majestic Homes and any reproduction of this plan, its concepts or ideas, is strictly prohibited. Plans and specifications are approximate and are subject to change without notice. Finished area and room dimensions will change depending on front elevation selection.

E. & O.E.



**UNIT #36**  
**MUN. #10 - #49 ROYAL DORNOCH DRIVE**

**SECOND FLOOR PLAN**  
**APPROX. 1,034 SQ. FT.**

This plan is the property of Hayhoe Homes and any reproduction of this plan, its concepts or ideas, is strictly prohibited. Plans and specifications are approximate and are subject to change without notice. Finished area and room dimensions will change depending on front elevation selection.

**E. & O.E.**