

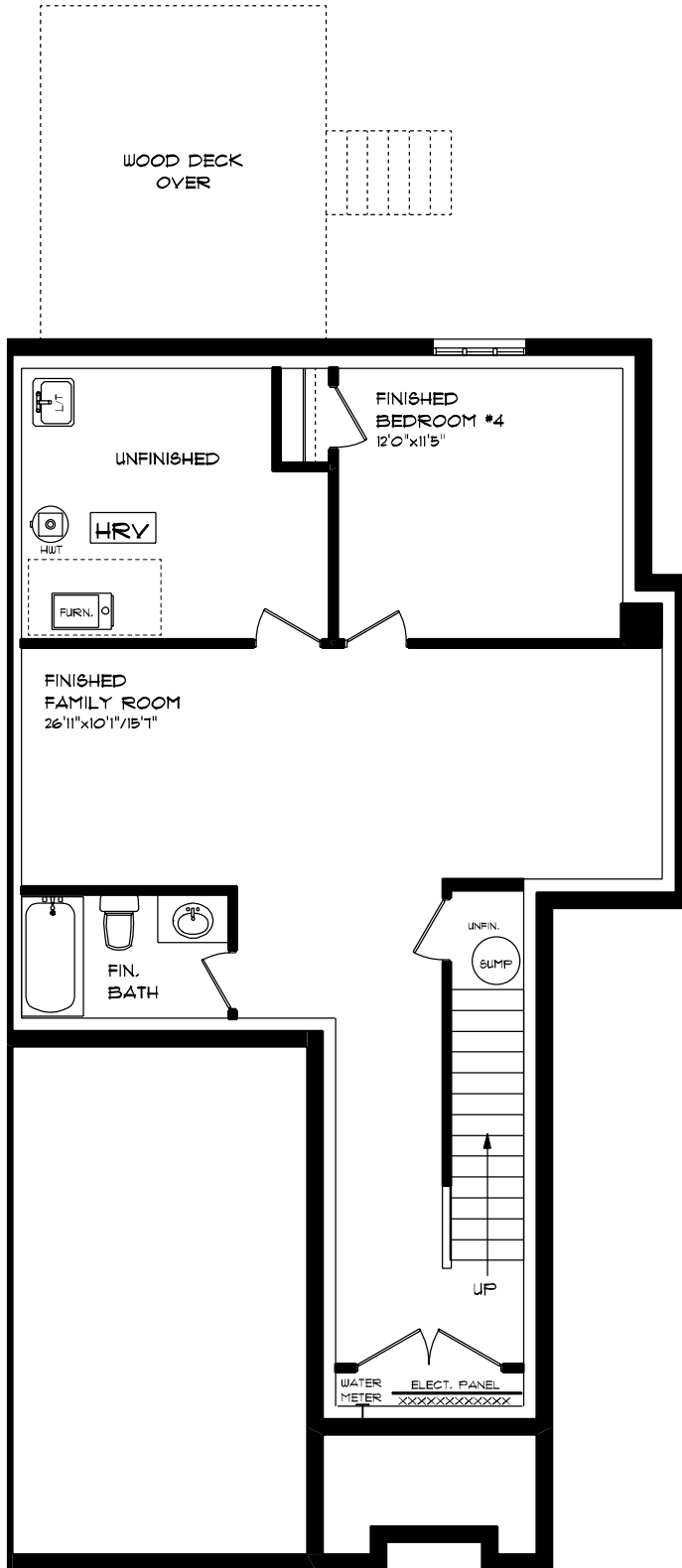


UNIT #1
MUN. #13 - #49 ROYAL DORNOCH DRIVE

FRONT ELEVATION
APPROX. 2,167 SQ. FT. TOTAL

This plan is the property of Mayrose Homes and any reproduction of this plan, its concepts or ideas, is strictly prohibited. Plans and elevations are approximate and are subject to change without notice. Finished area and room dimensions will change depending on front elevation selection.

E. & O.E.

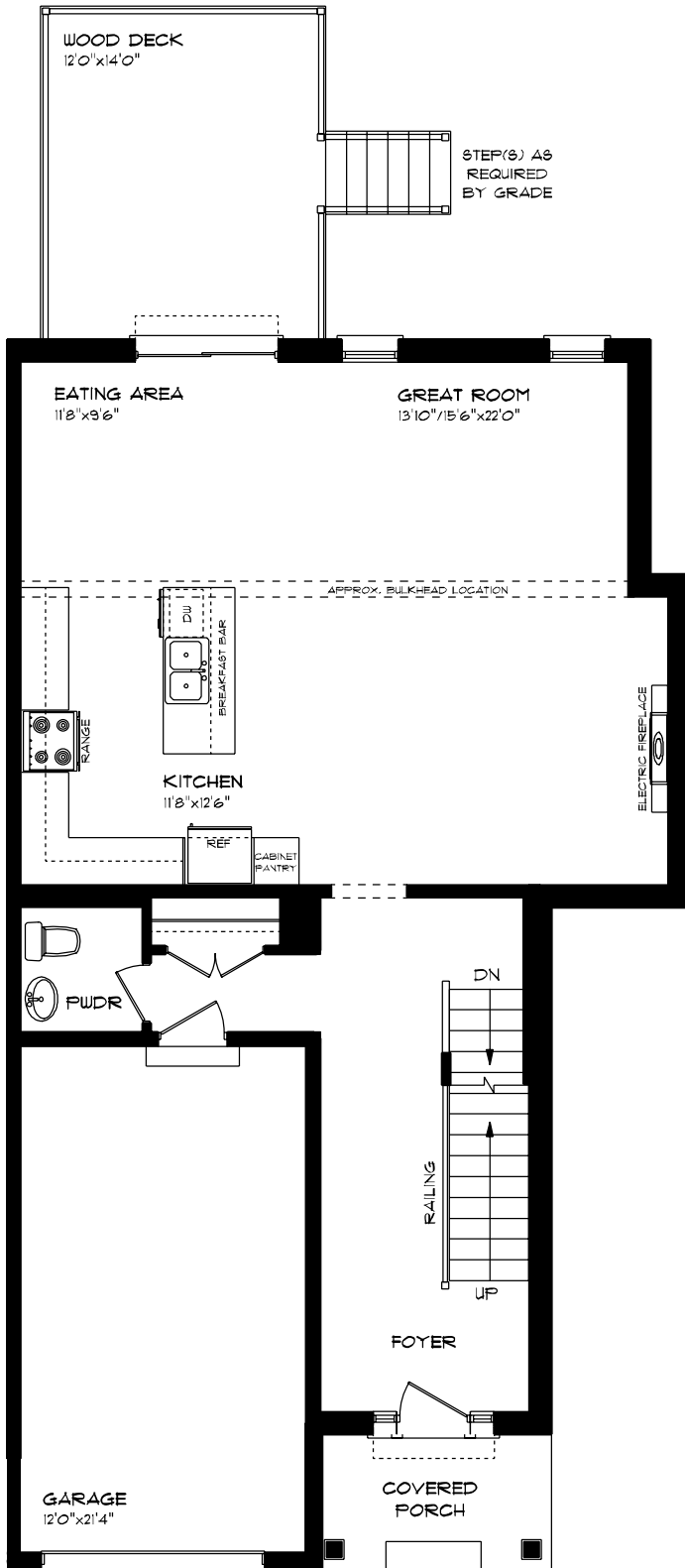


UNIT #7
MUN. #13 - #49 ROYAL DORNOCH DRIVE

LOWER LEVEL
APPROX. 668 SQ. FT.

This plan is the property of Halyon Homes and any reproduction of this plan, its concepts or ideas, is strictly prohibited. Plans and specifications are approximate and are subject to change without notice. Finished area and room dimensions will change depending on front elevation selection.

E. & O.E.

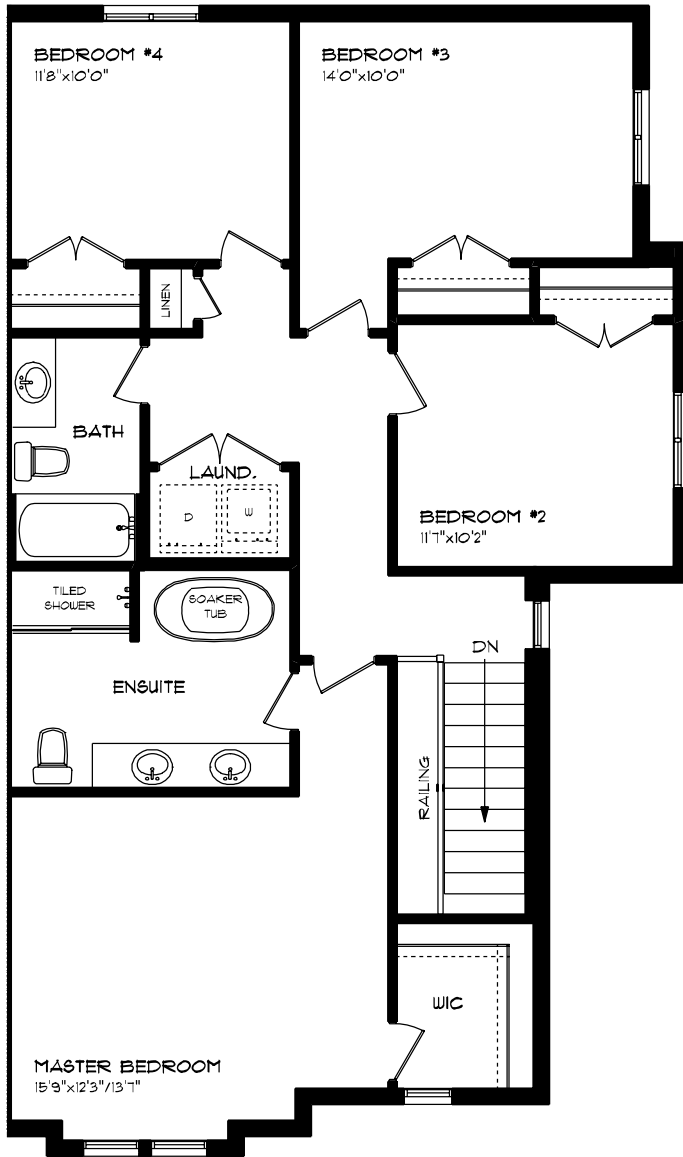


UNIT #7
MUN. #13 - #49 ROYAL DORNOCH DRIVE

MAIN FLOOR PLAN
APPROX. 914 SQ. FT.

This plan is the property of Major Homes and any reproduction of this plan, its concepts or ideas, is strictly prohibited. Plans and specifications are approximate and are subject to change without notice. Finished area and room dimensions will change depending on front elevation selection.

E. & O.E.



UNIT #7
 MUN. #13 - #49 ROYAL DORNOCH DRIVE

SECOND FLOOR PLAN
 APPROX. 1,137 SQ. FT.

This plan is the property of Haysco Homes and any reproduction of this plan, its concepts or ideas, is strictly prohibited. Plans and specifications are approximate and are subject to change without notice. Finished area and room dimensions will change depending on final elevation selection.

E. & O.E.