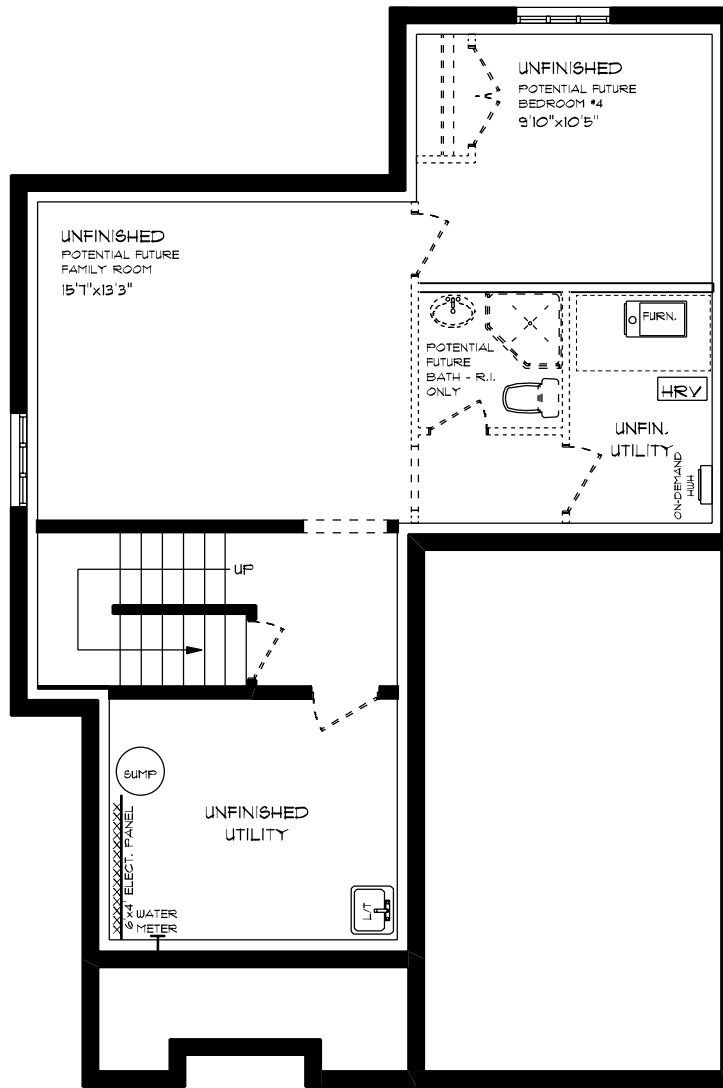




LOCKSHIRE

ESSENTIAL SPECS
LOT 31A (#6) HORIZON COURT
FRONT ELEVATION
9' MAIN FLOOR CEILING
APPROX. 1,770 SQ. FT. TOTAL

This plan is the property of Hayhoe Homes and any reproduction of this plan, its concepts or ideas, is strictly prohibited. Plans and specifications are approximate and are subject to change without notice. Finished area and room dimensions will change depending on front elevation selection. E.40.E. 2024
CREATED NOV. 2024

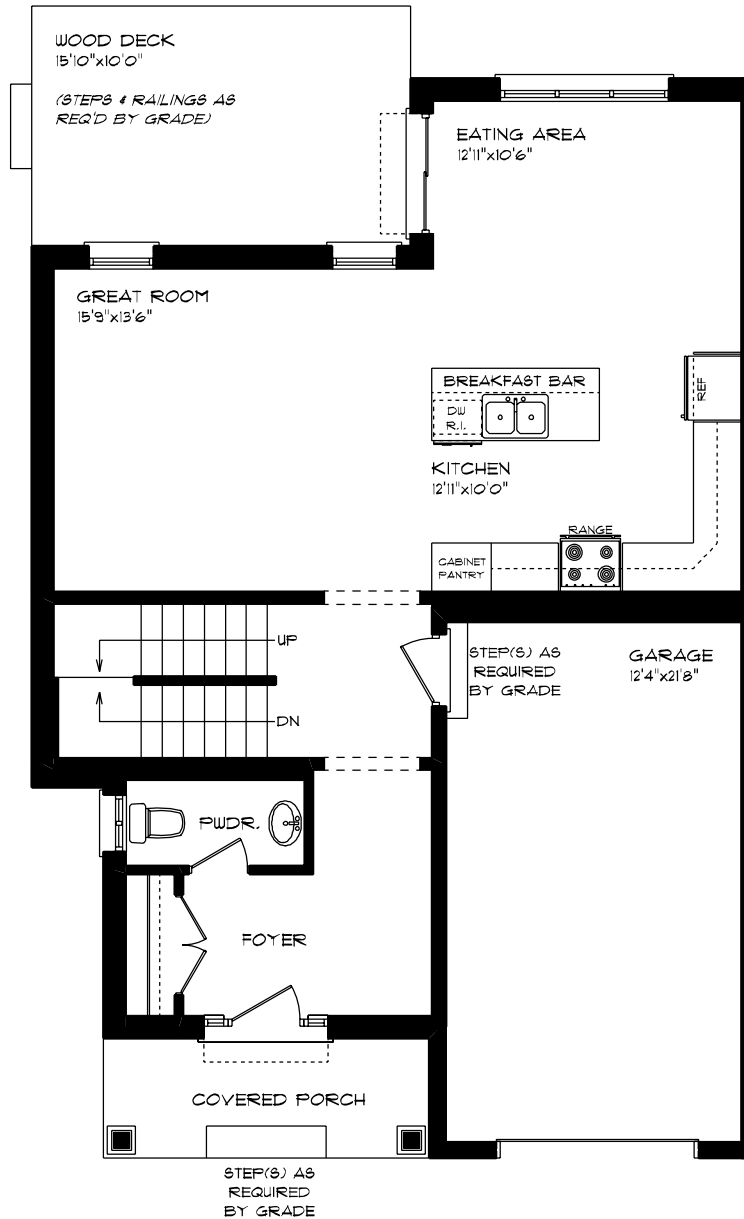


LOCKSHIRE

ESSENTIAL SPECS
 LOT 31A (#6) HORIZON COURT
 LOWER LEVEL PLAN
 0 SQ. FT.

This plan is the property of Hayhoe Homes and any reproduction of this plan, its concepts or ideas, is strictly prohibited. Plans and specifications are approximate and are subject to change without notice. Finished area and room dimensions will change depending on front elevation selection. E.A.O.E. 2024

CREATED NOV. 2024

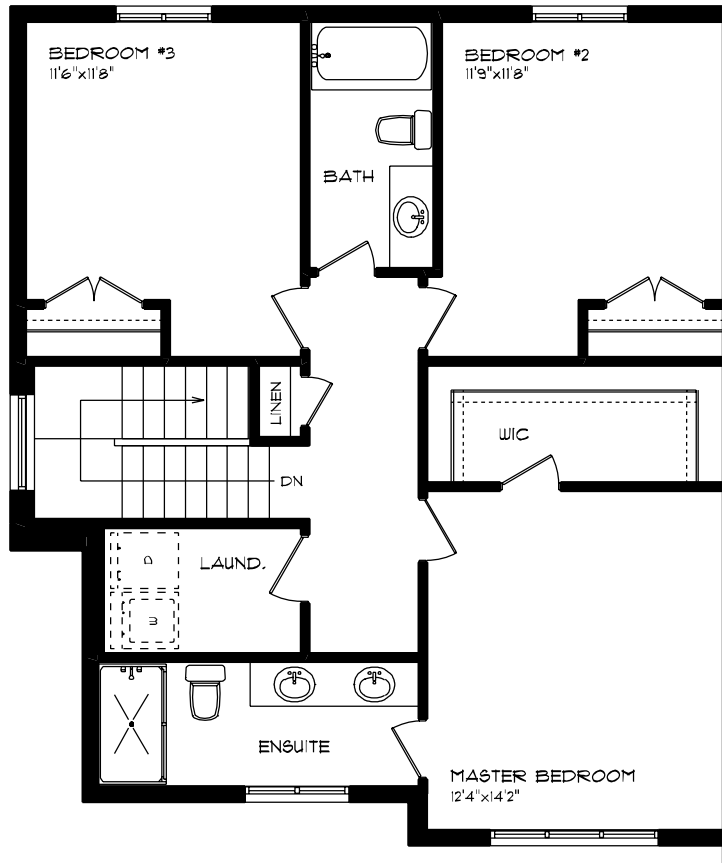


LOCKSHIRE

ESSENTIAL SPECS
 LOT 31A (#6) HORIZON COURT
 MAIN FLOOR PLAN
 9' MAIN FLOOR CEILING
 APPROX. 838 SQ. FT.

This plan is the property of Hayhoe Homes and any reproduction of this plan, its concepts or ideas, is strictly prohibited. Plans and specifications are approximate and are subject to change without notice. Finished area and room dimensions will change depending on front elevation selection. E.A.O.E. 2024

CREATED NOV, 2024



LOCKSHIRE

ESSENTIAL SPECS
 LOT 31A (#6) HORIZON COURT
 SECOND FLOOR PLAN
 APPROX. 932 SQ. FT.

This plan is the property of Hayhoe Homes and any reproduction of this plan, its concepts or ideas, is strictly prohibited. Plans and specifications are approximate and are subject to change without notice. Finished area and room dimensions will change depending on front elevation selection. E.40.E. 2024
 CREATED NOV. 2024