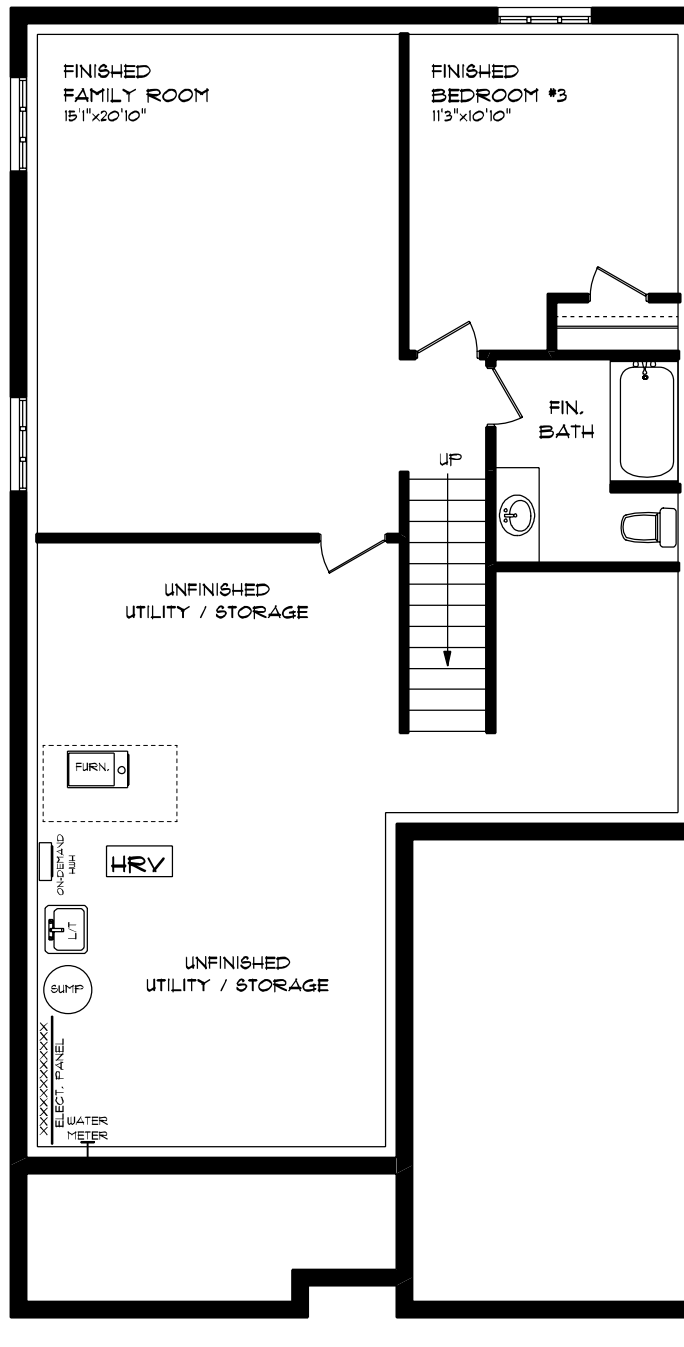




HALLWOOD (PREMIUM SPECS)  
 LOT 46A (#2) HEMLOCK CRESCENT  
 FRONT ELEVATION  
 9' MAIN FLOOR CEILING  
 APPROX. 1,831 TOTAL SQ. FT.

This plan is the property of Haysco Homes and any reproduction of this plan, its concepts or ideas, is strictly prohibited. Plans and specifications are approx here and are subject to change without notice. Finished area and room dimensions will change depending on front elevation selection. EAO/E 3024

CREATED MAR. 2024



HALLWOOD (PREMIUM SPECS)  
 LOT 46A (#2) HEMLOCK CRESCENT  
 LOWER LEVEL PLAN

606 SQ. FT.

This plan is the property of Hayes Homes and any reproduction of this plan, its concepts or ideas, is strictly prohibited. Plans and specifications are approximate and are subject to change without notice. Finished area and room dimensions will change depending on front elevation selection. EAC II, 2024

CREATED MAR, 2024

