

T O W N H O M E



ESSENTIAL FEATURES

235 RENAISSANCE DR

ORCHARD PARK MEADOWS, ST. THOMAS

THE DETAILS

PRICE	\$ 555,000
CLOSING DATE	AUGUST 12, 2025
LOT NUMBER	69B
BEDROOMS	3
BATHS	2.5
SQFT	1615
GARAGE	1
MODEL	2 STOREY TOWN



SALES PROFESSIONAL

DAVE MATTHEWS

519.633.9215

dave.matthews@hayhoehomes.com

SITE PLAN

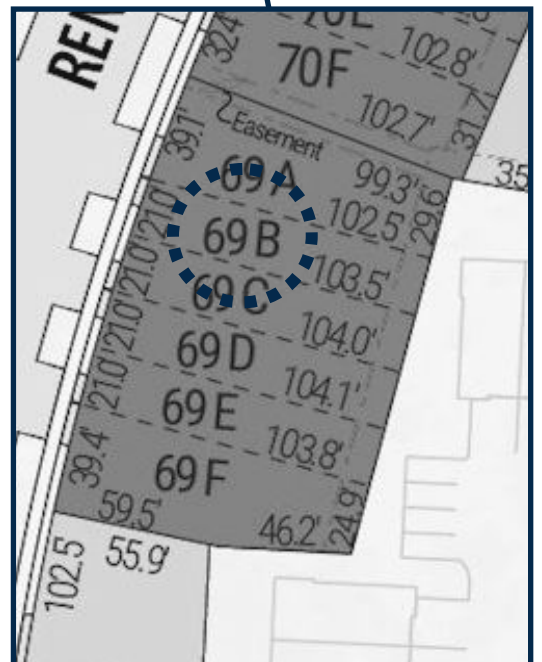


235 RENAISSANCE

EXTERIOR FEATURES:

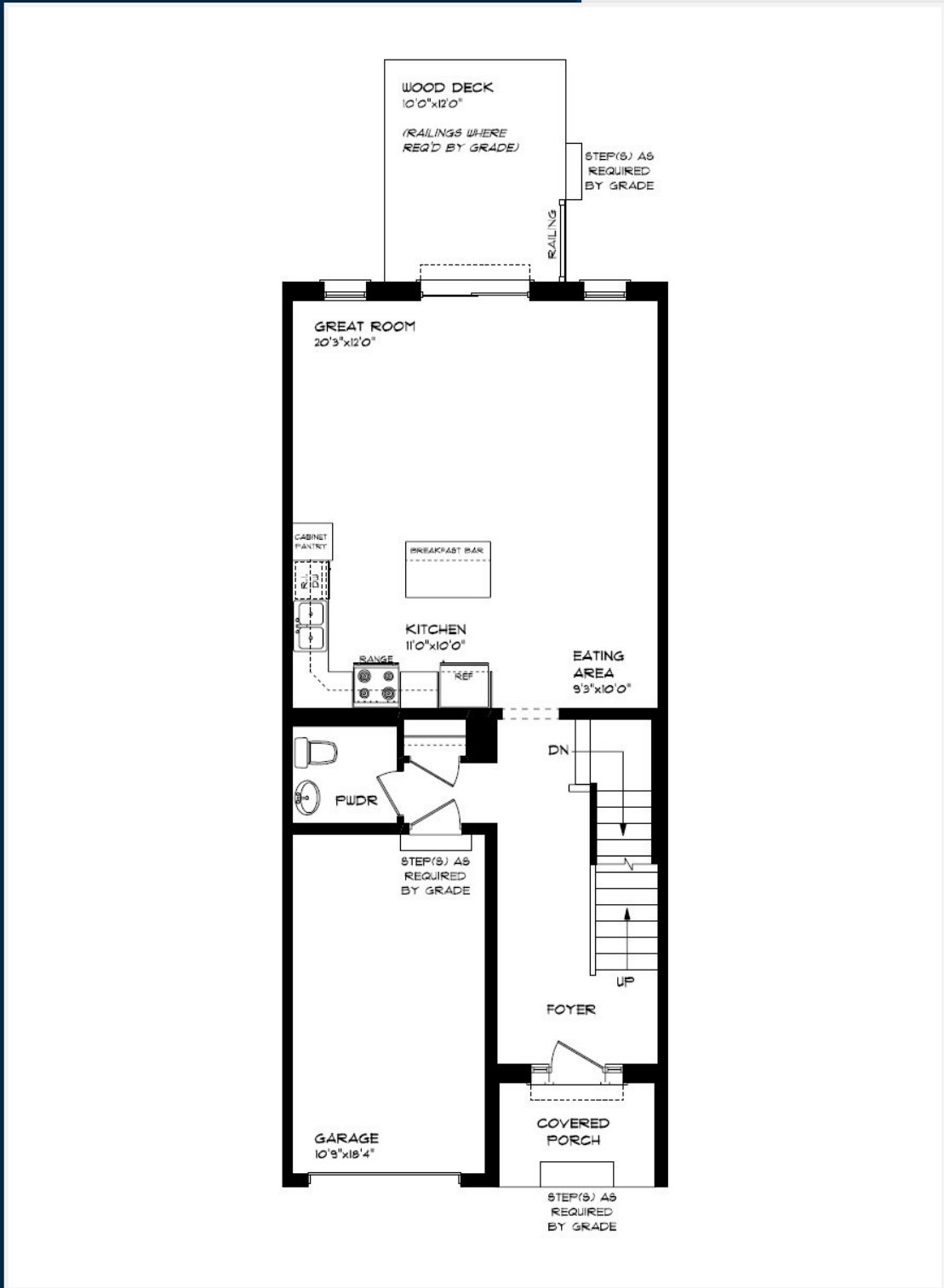
- KEYLESS ENTRY
- TREATED WOOD DECK
- ASPHALT DRIVEWAY
- WALKING TRAILS

HAYHOE™
HOMES



MAIN FLOOR

235 RENAISSANCE DR, ST. THOMAS



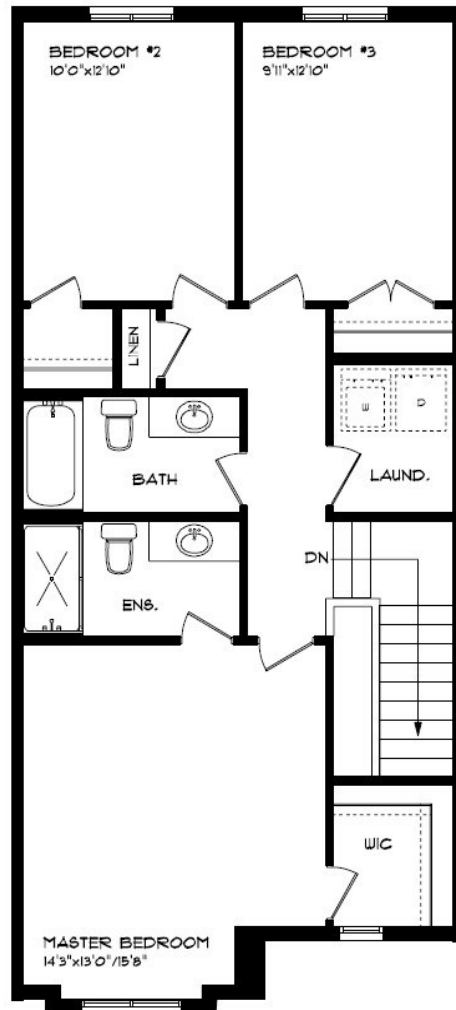
MAIN FLOOR:
APPROX 755 SQFT

- SINGLE CAR GARAGE
- KITCHEN ISLAND
- VINYL PLANK FLOORING
- QUARTZ COUNTERTOPS

HAYHOETM
— HOMES —

SECOND FLOOR

235 RENAISSANCE DR, ST. THOMAS



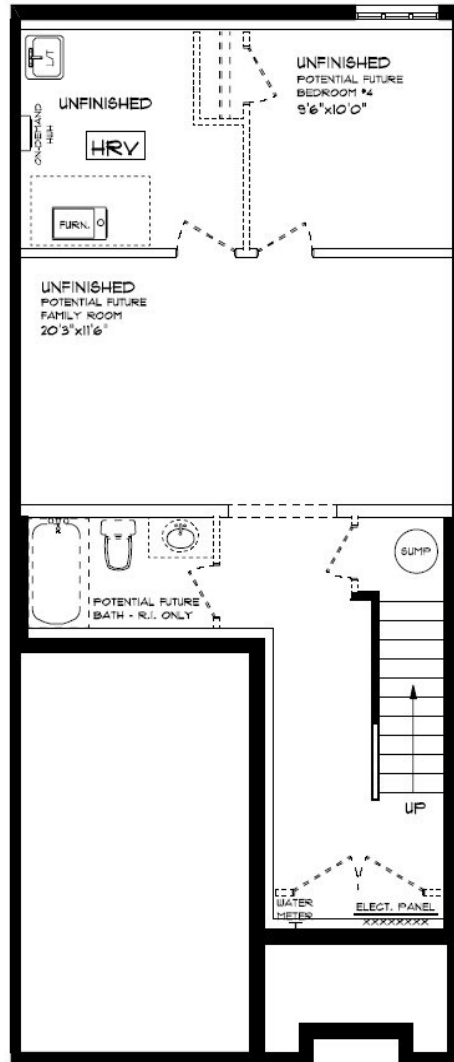
SECOND FLOOR:
APPROX 860 SQFT

SECOND FLOOR LAUNDRY
PROFESSIONALLY DESIGNED
CARPET FLOORING
VINYL PLANK FLOORING
WALK-IN CLOSET

HAYHOE™
— HOMES —

BASEMENT

235 RENAISSANCE DR, ST. THOMAS



BASEMENT:
UNFINISHED

AIR CONDITIONING
GAS FURNACE WITH HRV
HUMIDIFIER
NEW HOME WARRANTY

HAYHOETM
— HOMES —

INTERIOR FINISHES

235 RENAISSANCE



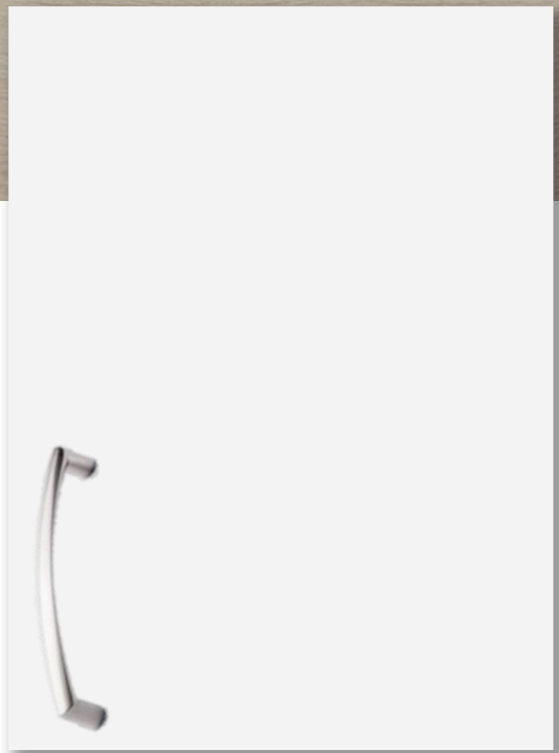
KITCHEN COUNTERTOPS



LUXURY VINYL PLANK



PAINT
COLOUR



KITCHEN
CABINETS

ISLAND PENDANTS



FOYER
FIXTURE



INTERIOR FINISHES

235 RENAISSANCE

INTERIOR DOOR STYLE

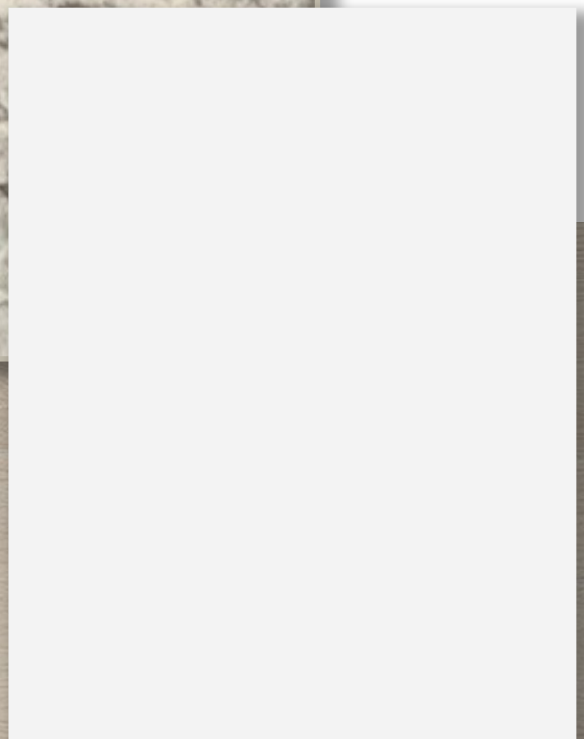
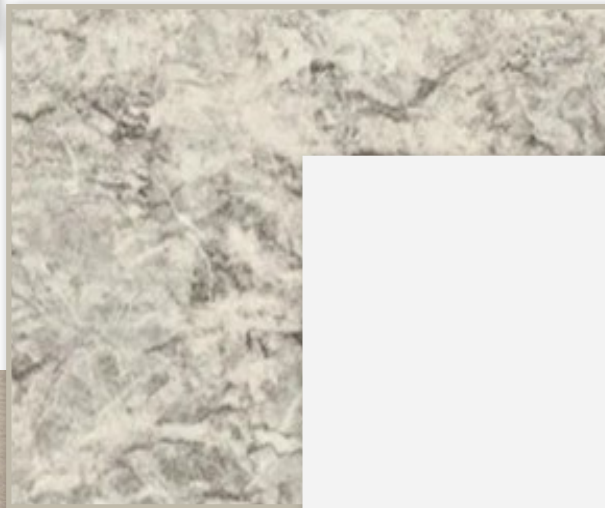


CARPET



BATHROOM
COUNTERTOP

BATHROOM
CABINERY



LUXURY VINYL PLANK

