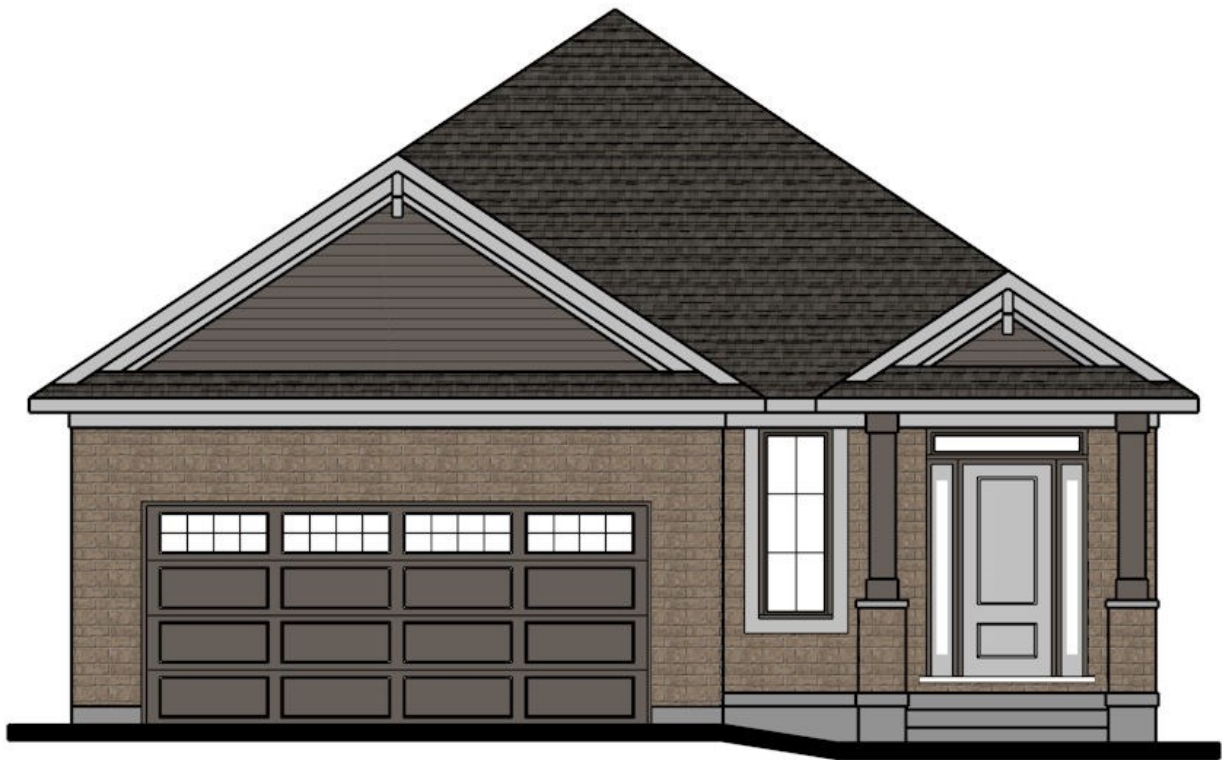


# INVENTORY HOME



## 11 BERARDI CRES.

MOUNT ELGIN MEADOW LANDS

### THE DETAILS

PRICE	\$ 659,995
CLOSING DATE	APRIL 17, 2025
LOT NUMBER	10
BEDROOMS	2
BATHS	2
SQFT	1361
GARAGE	2
MODEL	TRENTWOOD

**HAYHOE™**  
—HOMES—



### SALES PROFESSIONAL

JANELL HEYERMAN

519.842.2435

[Janell.heyerman@hayhoehomes.com](mailto:Janell.heyerman@hayhoehomes.com)

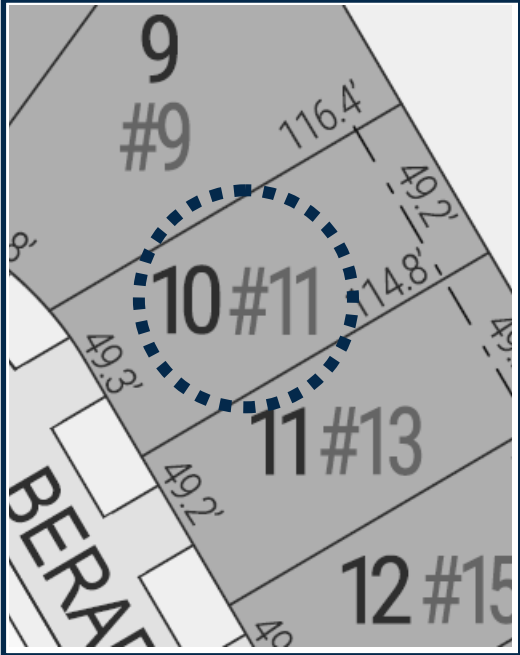
# SITE PLAN



## 11 BERARDI CRES

### EXTERIOR FEATURES:

- KEYLESS ENTRY
- TREATED WOOD DECK
- BBQ GAS LINE
- ASPHALT DRIVEWAY
- WALKING TRAILS

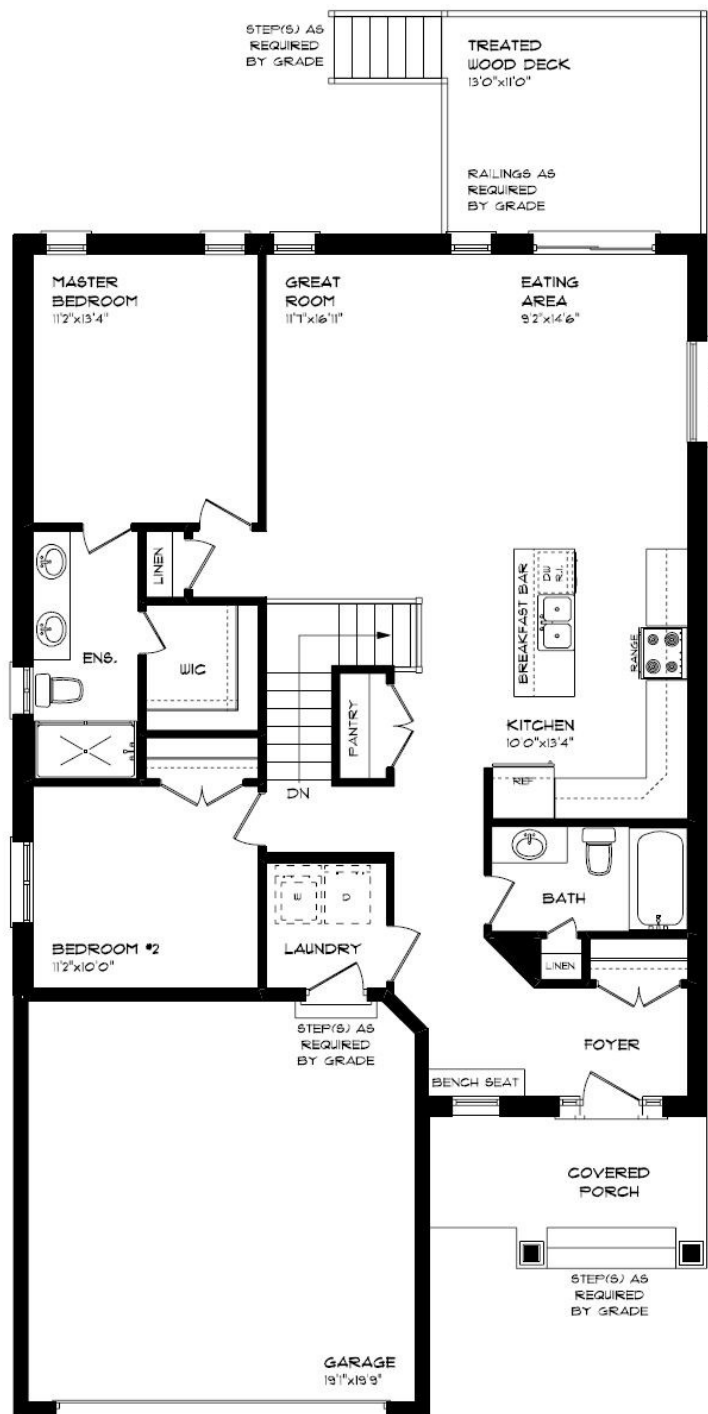


MOUNT ELGIN

MEADOW  
LANDS

# MAIN FLOOR

11 BERARDI CRES., MOUNT ELGIN



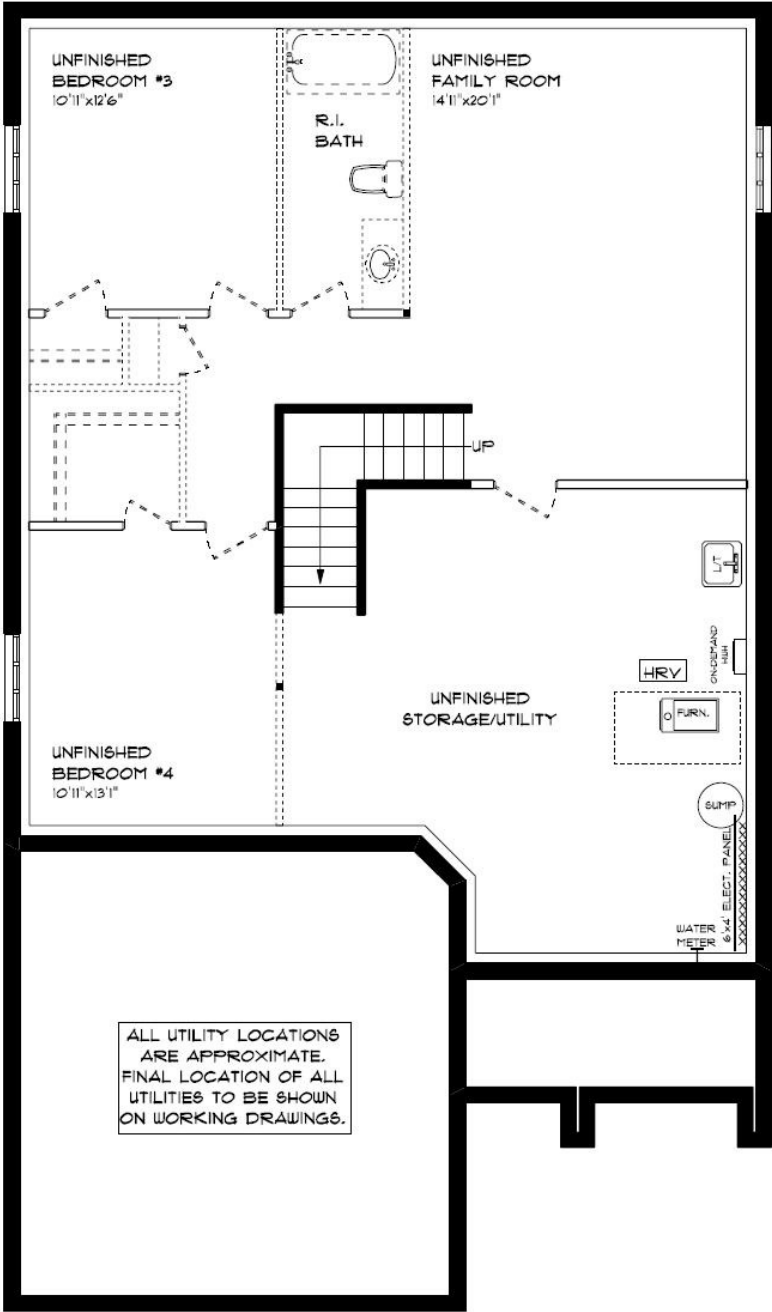
- MAIN FLOOR LAUNDRY
- CUSTOM CABINETS & HOOD
- VINYL PLANK FLOORING
- CARPET FLOORING
- QUARTZ COUNTERTOPS
- KITCHEN BACKSPLASH

MAIN FLOOR:  
APPROX 1361 SQFT



# BASEMENT

11 BERARDI CRES., MOUNT ELGIN



BASEMENT:  
UNFINISHED

AIR CONDITIONING  
GAS FURNACE WITH HRV  
HUMIDIFIER  
NEW HOME WARRANTY

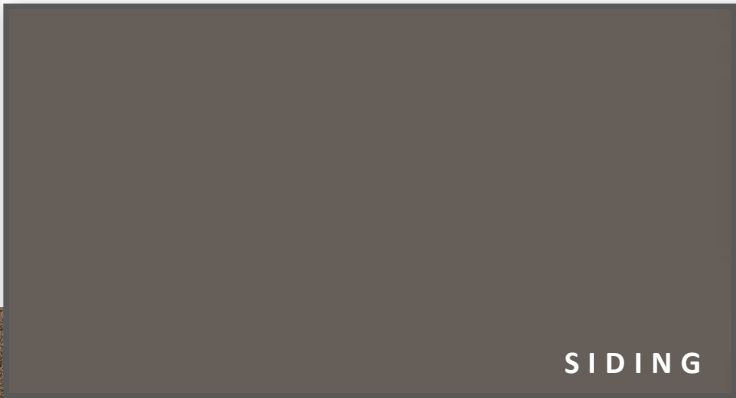
**HAYHOE™**  
—HOMES—

# EXTERIOR FINISHES

SHINGLES



11 BERARDI CRES



SIDING



BRICK

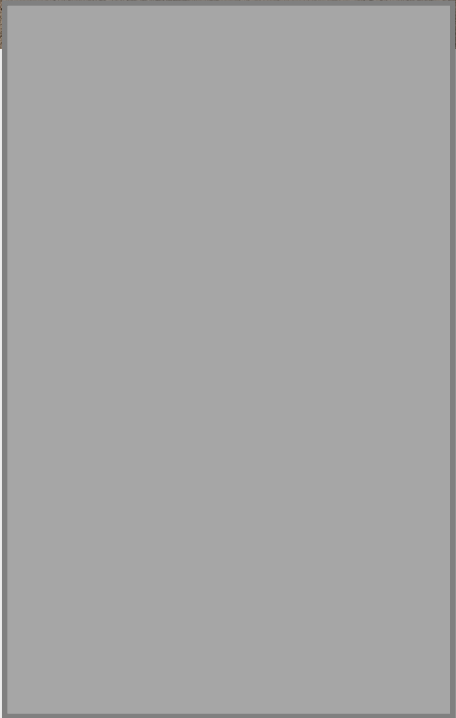


FRONT  
DOOR



WINDOWS

GARAGE DOOR



ALUMINUM



# INTERIOR FINISHES

KITCHEN BACKSPLASH



## 11 BERARDI CRES

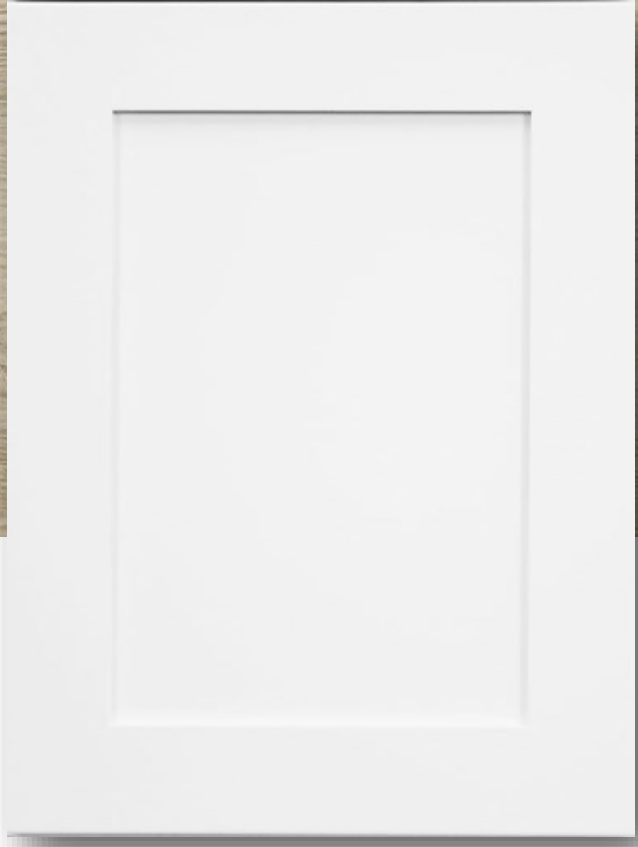
QUARTZ KITCHEN COUNTERTOPS



LVP FLOORING



PAINT  
COLOUR



PAINTED  
KITCHEN  
CABNETRY



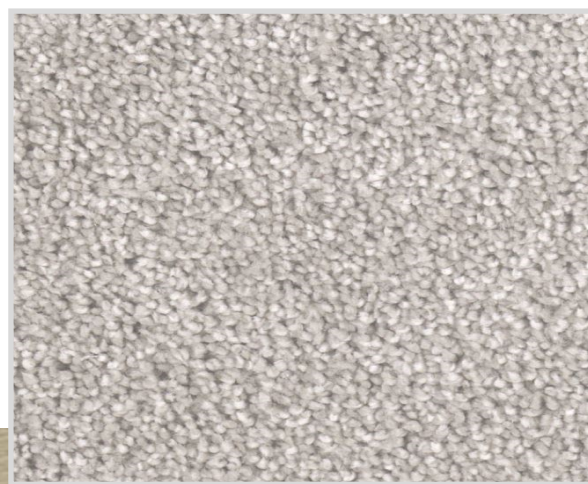
# INTERIOR FINISHES

## 11 BERARDI CRES

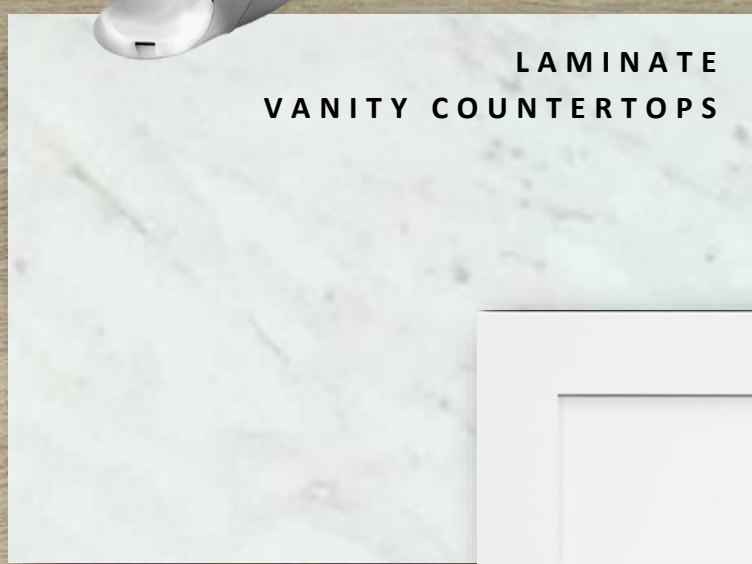
INTERIOR DOOR STYLE



CARPET



LAMINATE  
VANITY COUNTERTOPS



PAINTED  
VANITY  
CABINETRY



LVP FLOORING

