

T O W N H O M E

ESSENTIAL FEATURES



5 CANARY STREET

NORTHCREST TOWNS, TILLSONBURG

THE DETAILS

PRICE	\$540,000
CLOSING DATE	AUGUST 26, 2025
LOT NUMBER	86A, PHASE 2
BEDROOMS	2
BATHS	2
SQFT	1225
GARAGE	1
MODEL	1 STOREY TOWN

HAYHOE™
—HOMES—



SALES PROFESSIONAL

EMMA SMITH

519.409.1474

emma.smith@hayhoehomes.com

SITE PLAN

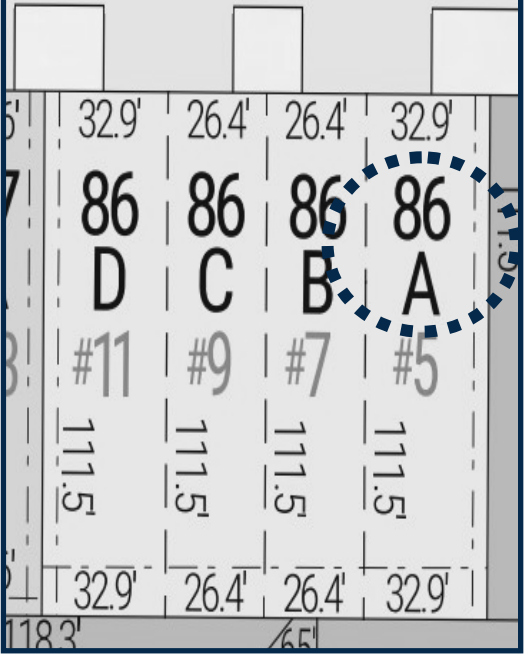


5 CANARY STREET

EXTERIOR FEATURES:

- KEYLESS ENTRY
- TREATED WOOD DECK
- ASPHALT DRIVEWAY
- WALKING TRAILS

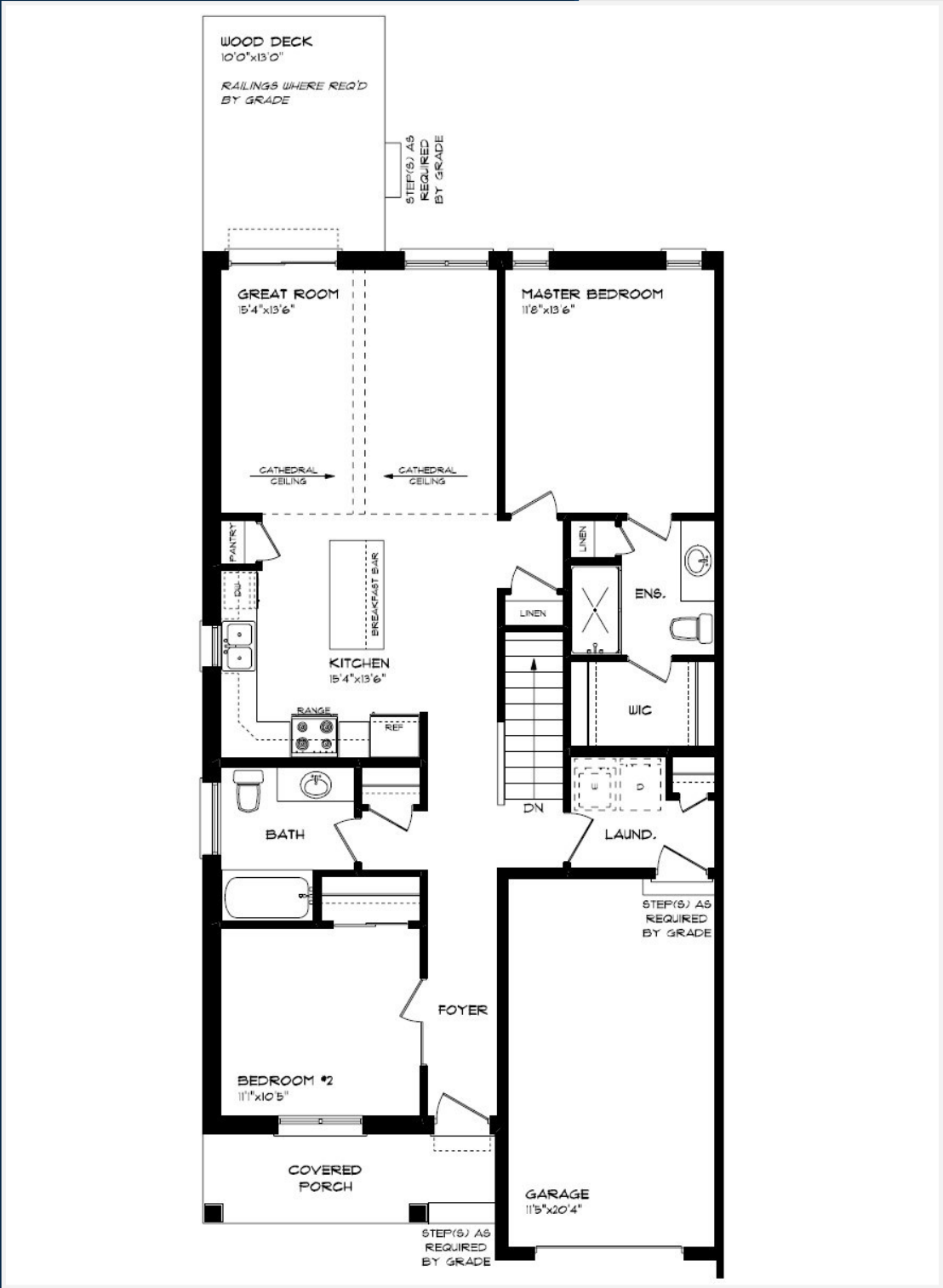
HAYHOETM
HOMES



NORTHCREST
TOWNS

MAIN FLOOR

5 CANARY STREET, TILLSONBURG



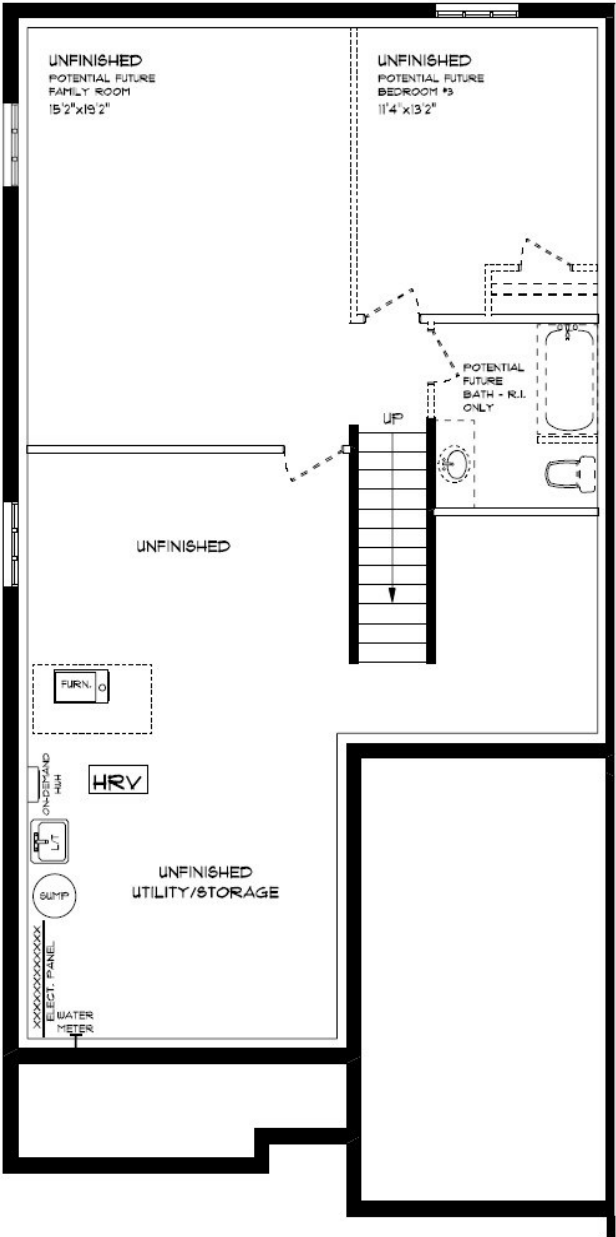
- SINGLE CAR GARAGE
- KITCHEN ISLAND
- VINYL PLANK FLOORING
- QUARTZ COUNTERTOPS
- UNDERMOUNT SINK

MAIN FLOOR:
APPROX 1225 SQFT



BASEMENT

5 CANARY STREET, TILLSONBURG



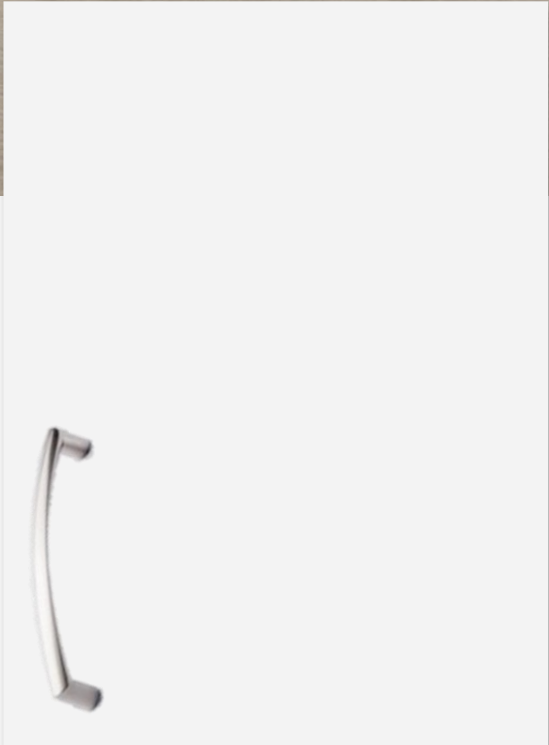
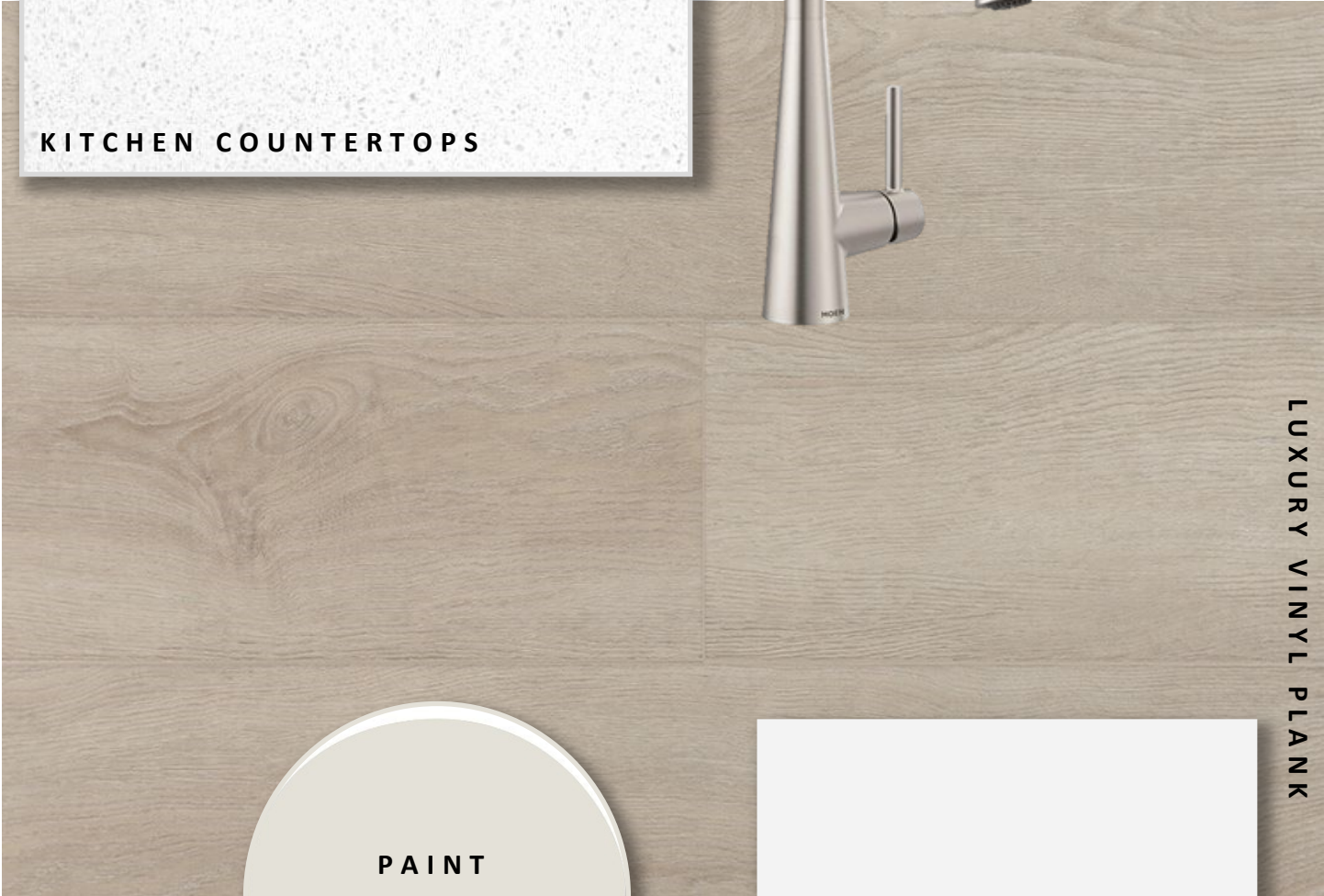
BASEMENT:
UNFINISHED

AIR CONDITIONING
GAS FURNACE WITH HRV
HUMIDIFIER
NEW HOME WARRANTY

HAYHOE™
— HOMES —

INTERIOR FINISHES

5 CANARY ST



ISLAND PENDANTS



FOYER
FIXTURE



PRICE, PRODUCTS, COLOURS & FEATURES ARE SUBJECT TO CHANGE WITHOUT NOTICE.
COLOURS SHOWN MAY VARY FROM INSTALLED MATERIALS. E & O.E

INTERIOR FINISHES

5 CANARY ST

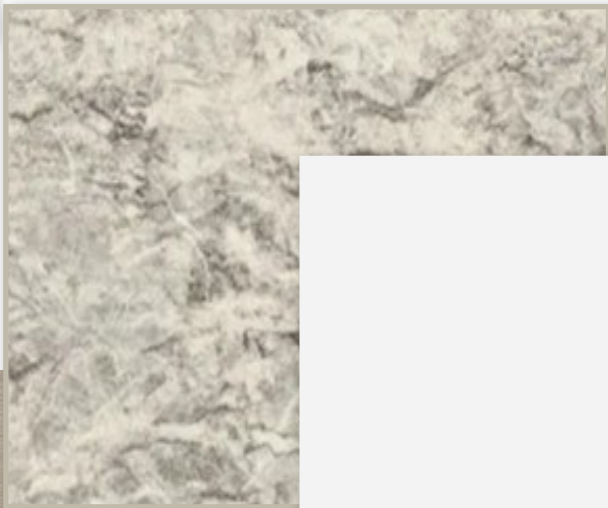
INTERIOR DOOR STYLE



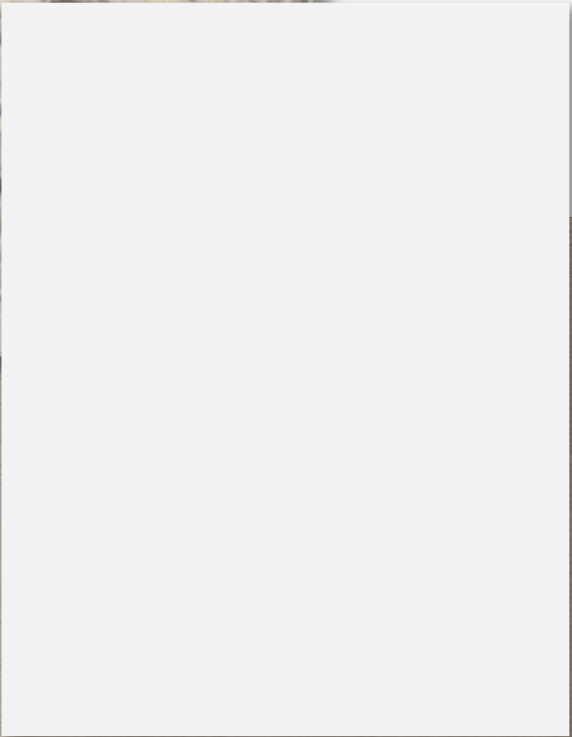
CARPET



BATHROOM
COUNTERTOP



BATHROOM
CABINETRY



LUXURY VINYL PLANK

