

# WILLOW RUN

55 WILLOW DRIVE

AYLMER | ONTARIO

TOWNHOME

PREMIUM  
SPECS



## THE DETAILS

PRICE	\$589,000
CLOSING DATE	May 14, 2025
LOT NUMBER	1C
BEDROOMS	3
BATHS	2.5
GARAGE	2
DRIVEWAY	19'
SQ FT	1,972
MODEL	Townhome

**Emma Smith** SALES PROFESSIONAL

519.409.1474 | emma.smith@hayhoehomes.com



[WWW.HAYHOEHOMES.COM](http://www.hayhoehomes.com)

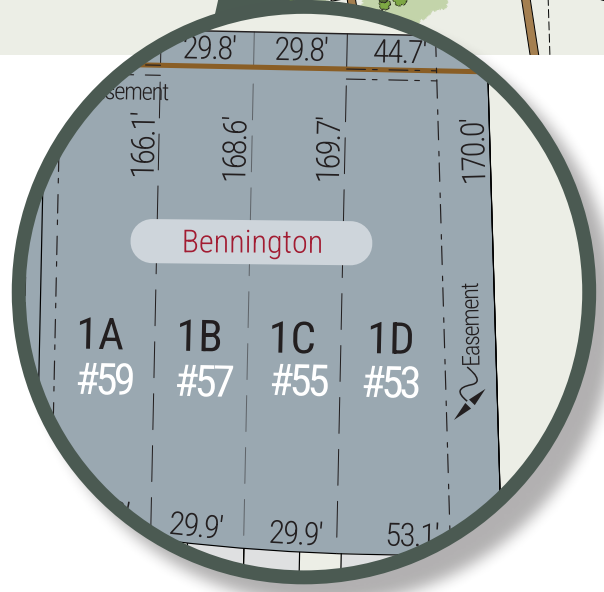
Price, products, colours & features are subject to change without notice. E. & O. E. DATE MAR 2025

**HAYHOE**<sup>TM</sup>  
-HOMES-

# WILLOW RUN

## SITE PLAN

55 WILLOW DRIVE | AYLMER ON



### exterior features

- KEYLESS ENTRY
- TREATED WOOD DECK
- BBQ GAS LINE
- ASPHALT DRIVEWAY
- WALKING TRAILS

# WILLOW RUN

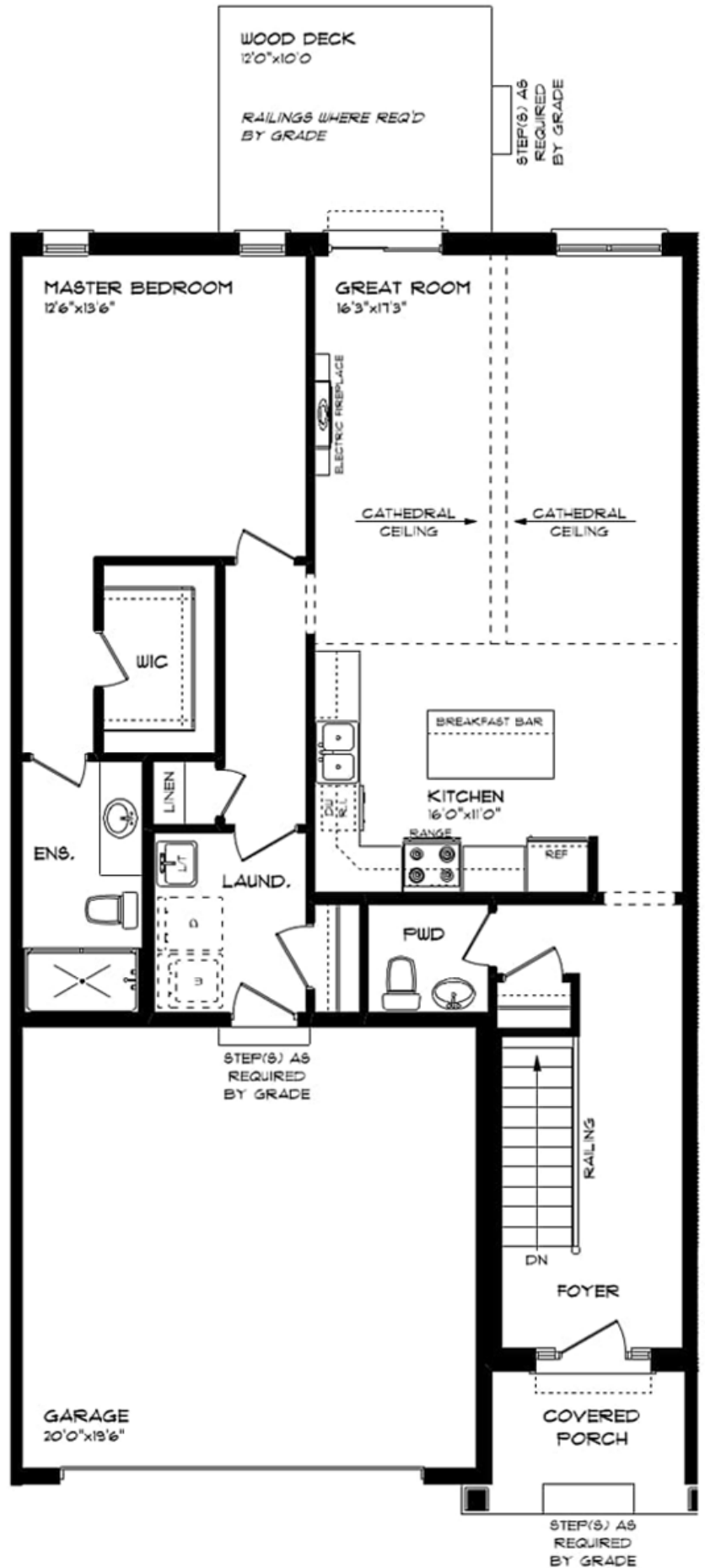
55 WILLOW DRIVE

## MAIN FLOOR

1,180 sq ft

### features

- MAIN FLOOR LAUNDRY
- QUARTZ COUNTERTOPS
- KITCHEN BACKSPLASH
- DOUBLE CAR GARAGE
- ELECTRIC FIREPLACE



# WILLOW RUN

55 WILLOW DRIVE

## LOWER LEVEL

792 sq ft

### *features*

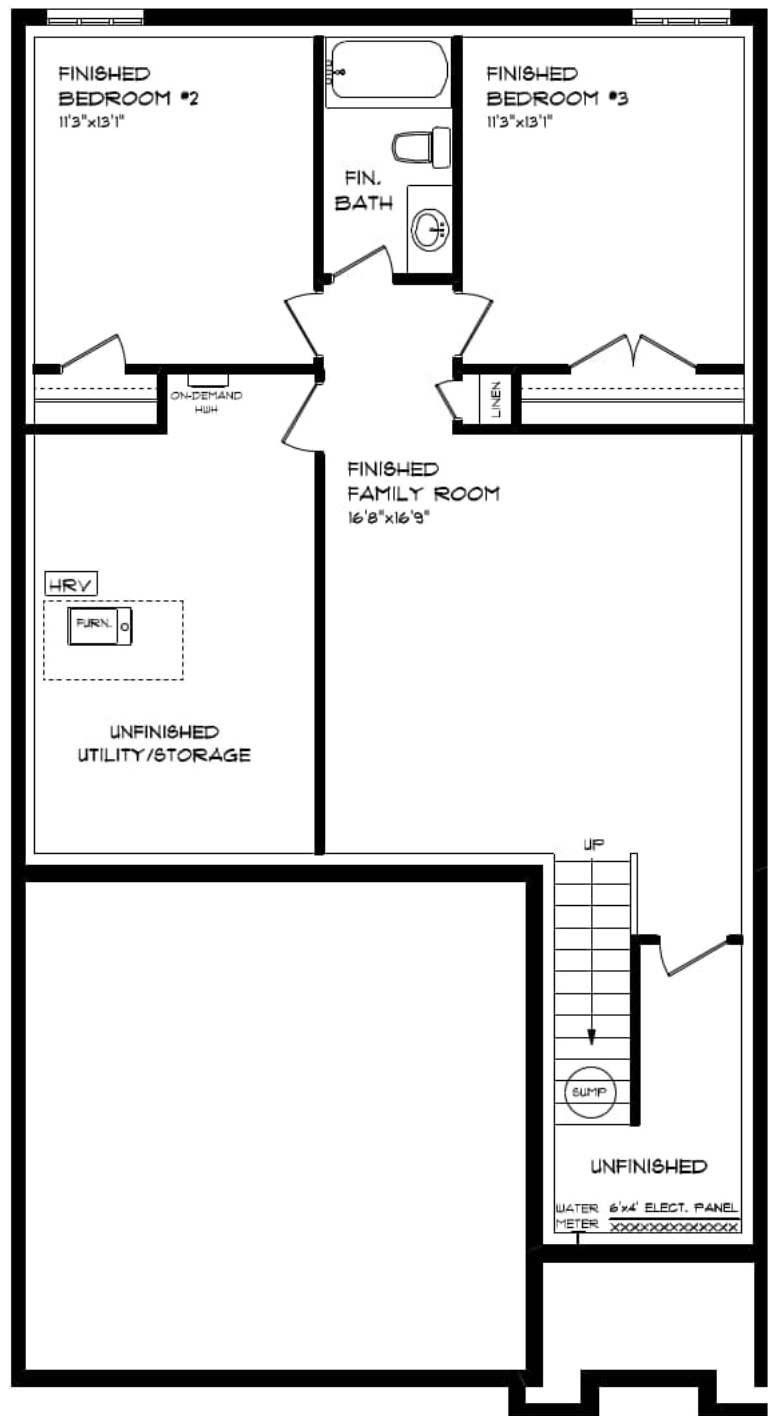
CARPET FLOORING

AIR CONDITIONING

GAS FURNACE WITH HRV

HUMIDIFIER

NEW HOME WARRANTY



# WILLOW RUN

55 WILLOW DRIVE

## INTERIOR FINISHES



KITCHEN BACKSPLASH



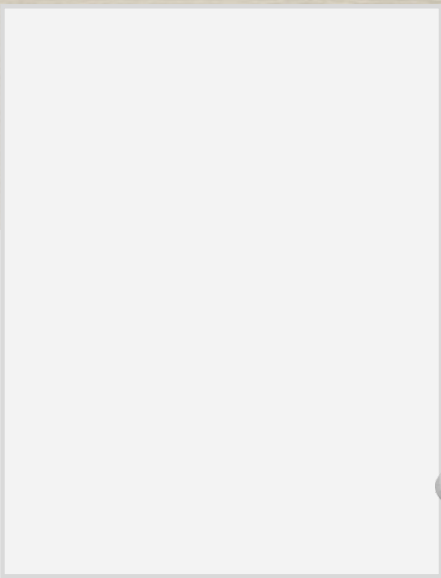
QUARTZ KITCHEN COUNTERTOPS



LUXURY VINYL PLANK



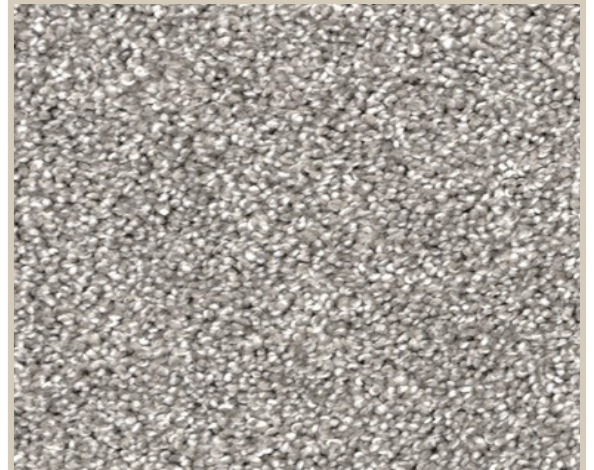
MELAMINE KITCHEN CABINETRY



MELAMINE VANITY CABINETRY



LAMINATE VANITY COUNTERTOPS



CARPET