

INVENTORY HOME



128 GRAYDON DR.

MOUNT ELGIN MEADOW LANDS

THE DETAILS

PRICE	\$ 799,900
CLOSING DATE	AVAILABLE NOW
LOT NUMBER	57
BEDROOMS	4
BATHS	2.5
SQFT	2254
GARAGE	2
MODEL	WELLSHIRE

HAYHOE™
—HOMES—



SALES PROFESSIONAL

JANELL HEYERMAN

519.842.2435

Janell.heyerman@hayhoehomes.com

SITE PLAN

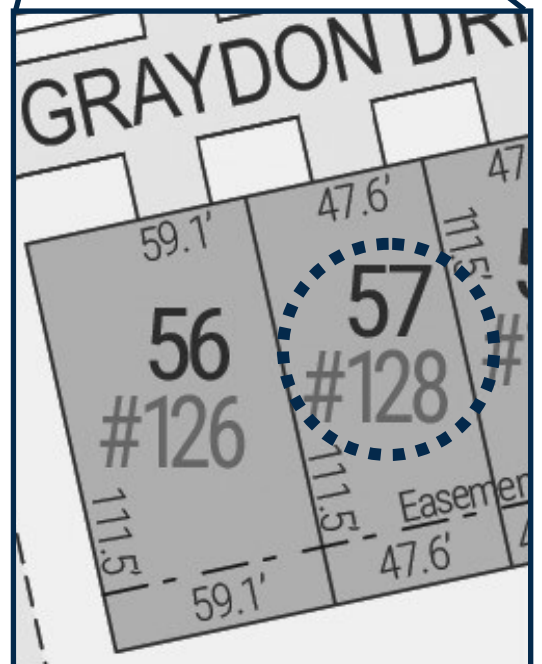


128 GRAYDON

EXTERIOR FEATURES:

- KEYLESS ENTRY
- TREATED WOOD DECK
- BBQ GAS LINE
- ASPHALT DRIVEWAY
- WALKING TRAILS

HAYHOE™
HOMES

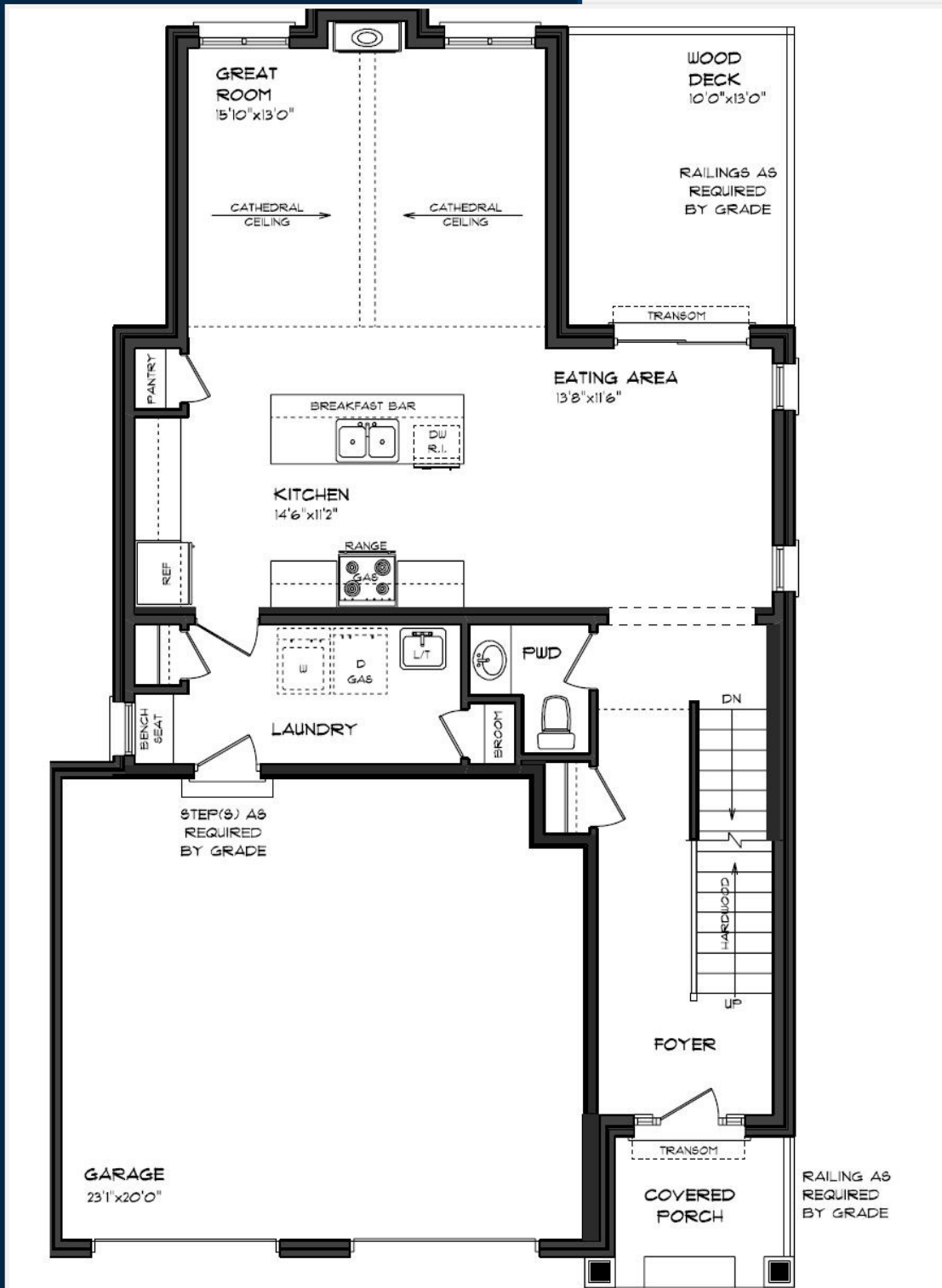


MOUNT ELGIN

MEADOW
LANDS

MAIN FLOOR

128 GRAYDON DR., MOUNT ELGIN



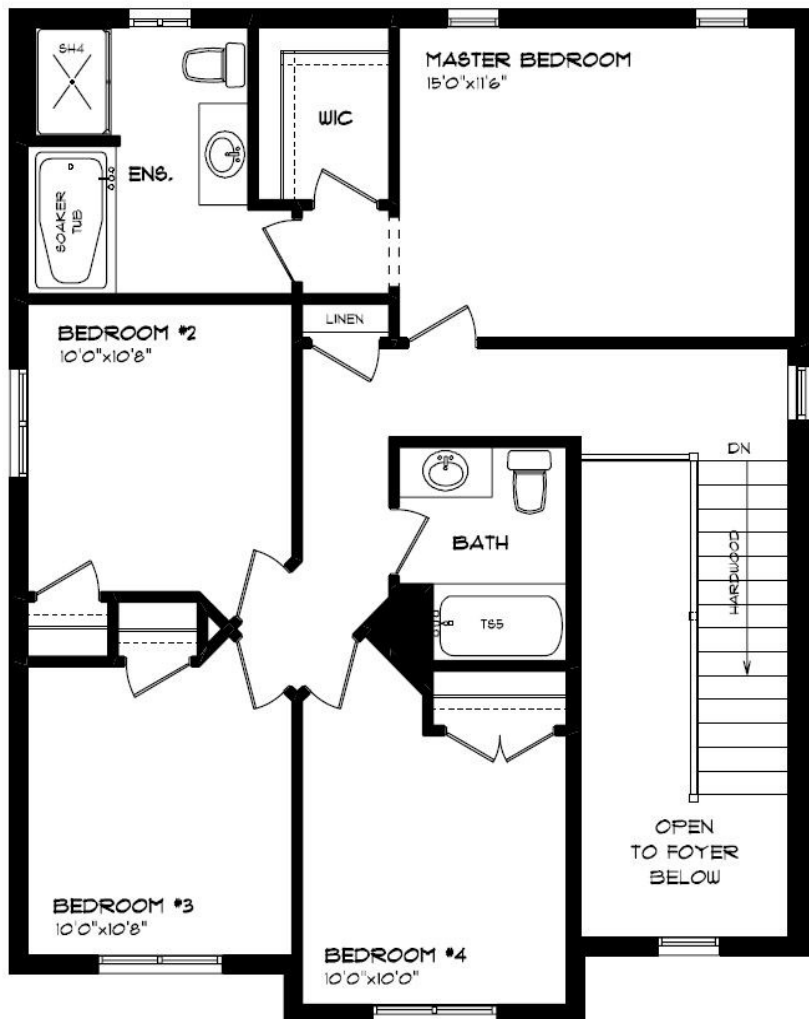
MAIN FLOOR LAUNDRY
 CUSTOM CABINETS & HOOD
 GAS FIREPLACE
 HARDWOOD FLOORING
 QUARTZ COUNTERTOPS
 KITCHEN BACKSPLASH

MAIN FLOOR:
 APPROX 963 SQFT

HAYHOETM
 HOMES

SECOND FLOOR

128 GRAYDON DR., MOUNT ELGIN



SOAKER TUB

CARPET FLOORING

TILED FLOORING

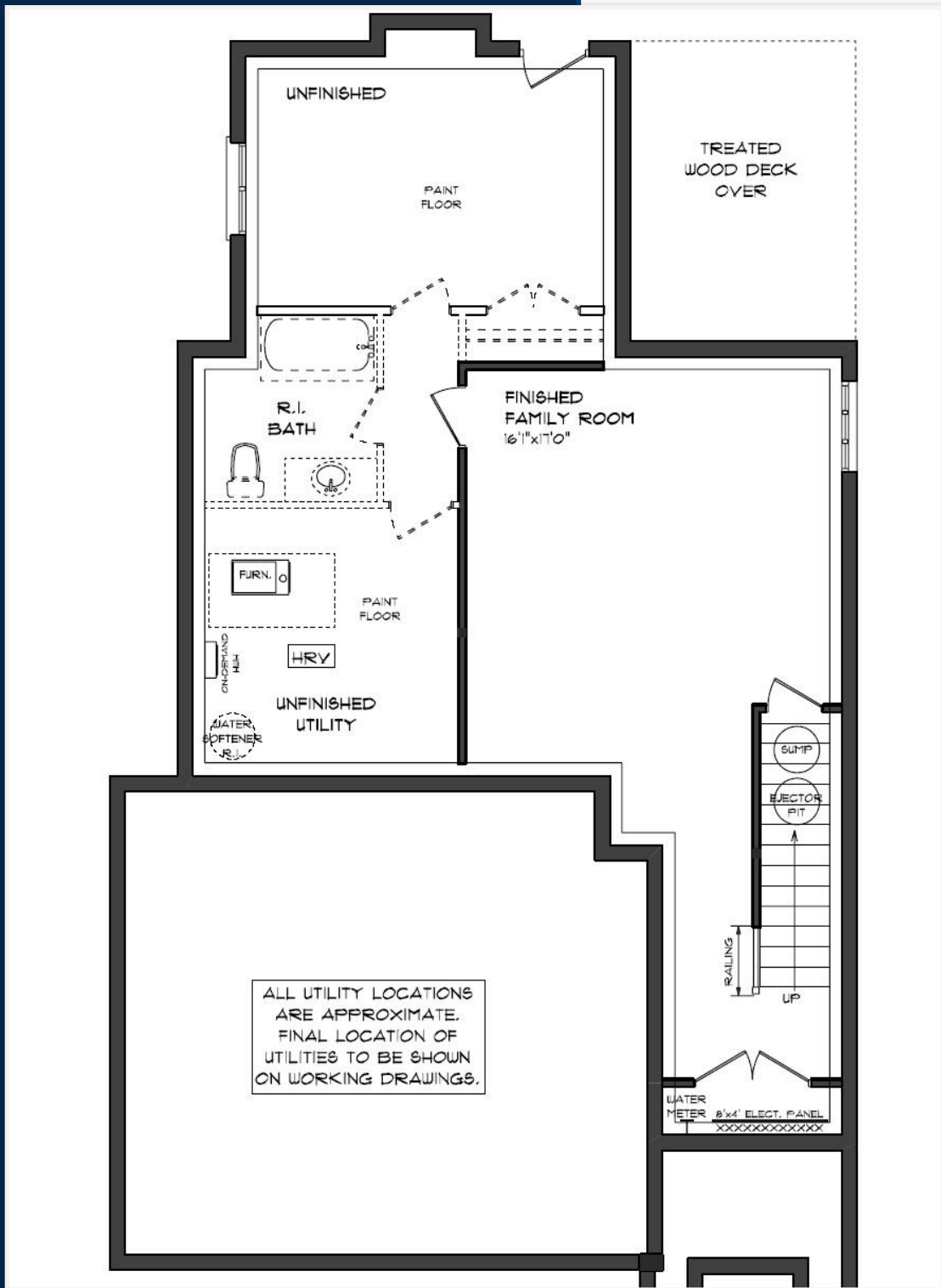
DECORATIVE LIGHTING

SECOND FLOOR:
APPROX 915 SQFT

HAYHOE™
— HOMES —

BASEMENT

128 GRAYDON DR., MOUNT ELGIN



- AIR CONDITIONING
- CARPET FLOORING
- GAS FURNACE WITH HRV
- HUMIDIFIER
- NEW HOME WARRANTY

BASEMENT:
APPROX. 376 SQFT

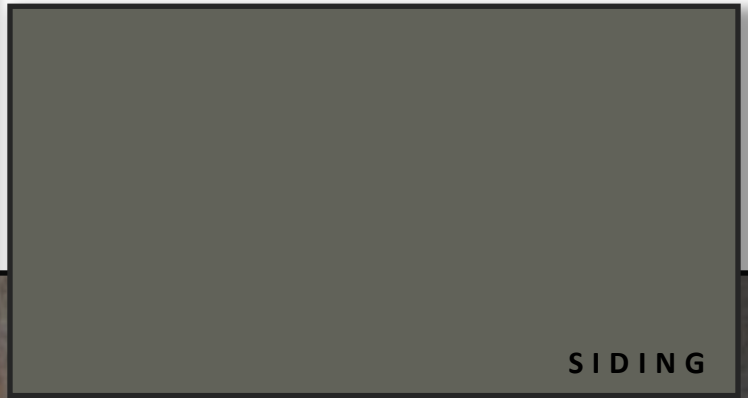
HAYHOE™
HOMES

EXTERIOR FINISHES

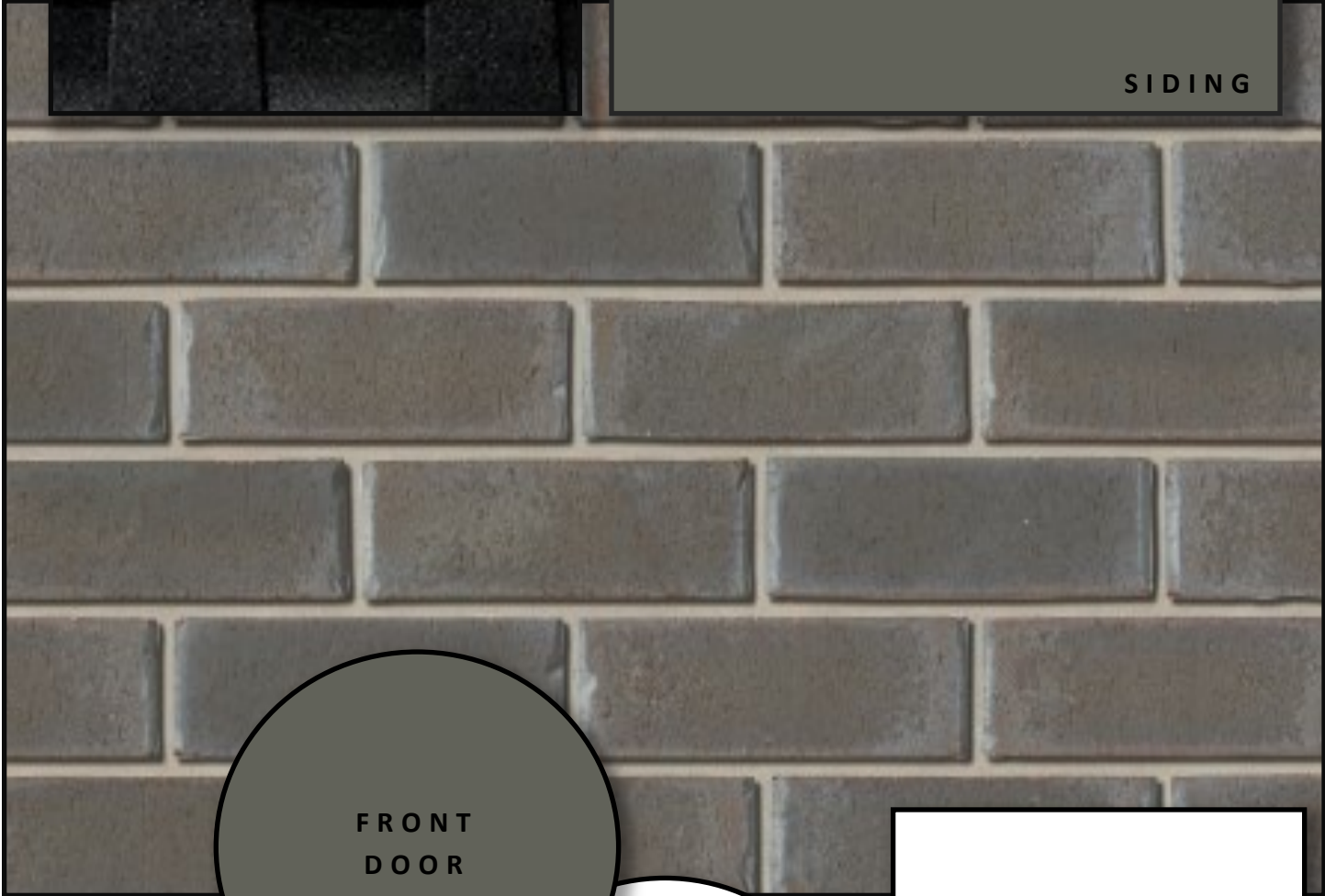
SHINGLES



128 GRAYDON DR



SIDING

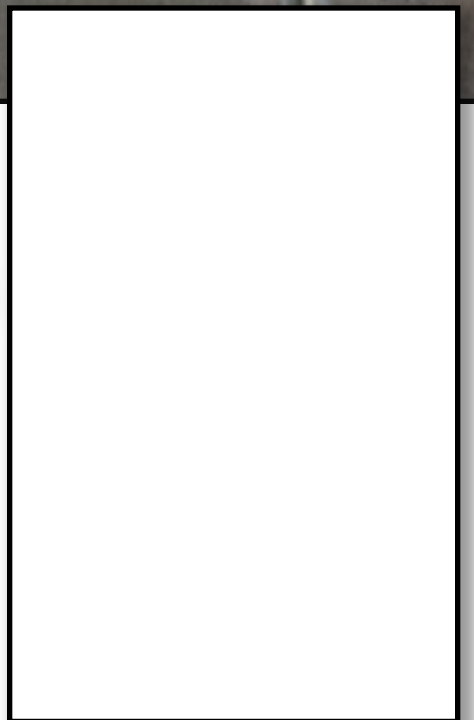
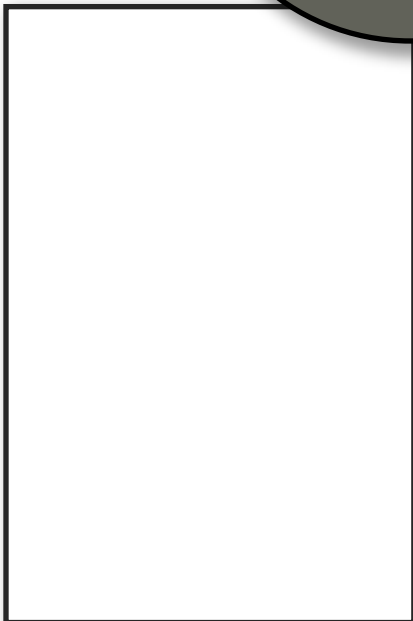


BRICK

FRONT
DOOR

WINDOWS

GARAGE DOOR



ALUMINUM

INTERIOR FINISHES

128 Graydon Dr

KITCHEN BACKSPLASH



KITCHEN COUNTERTOPS



PAINT
COLOUR



HARDWOOD



MAIN
FLOOR TILE



KITCHEN
CABINETRY

HAYHOE™
HOMES

INTERIOR FINISHES

128 Graydon Dr

INTERIOR DOOR STYLE



CARPET



ENSUITE TUB SURROUND

MAIN BATH COUNTERTOPS



MAIN BATH CABINETRY



ENSUITE COUNTERTOPS



ENSUITE CABINETRY



ENSUITE FLOOR TILE

HAYHOE™
—HOMES—