

INVENTORY HOME



122 GRAYDON DR

MOUNT ELGIN MEADOW LANDS

THE DETAILS

PRICE	\$ 749,000
CLOSING DATE	MAY 21, 2025
LOT NUMBER	54
BEDROOMS	3
BATHS	2
SQFT	1428
GARAGE	2
MODEL	HAMILTON

HAYHOE™
— HOMES —



SALES PROFESSIONAL

JANELL HEYERMAN

519.842.2435

Janell.heyerman@hayhoehomes.com

SITE PLAN

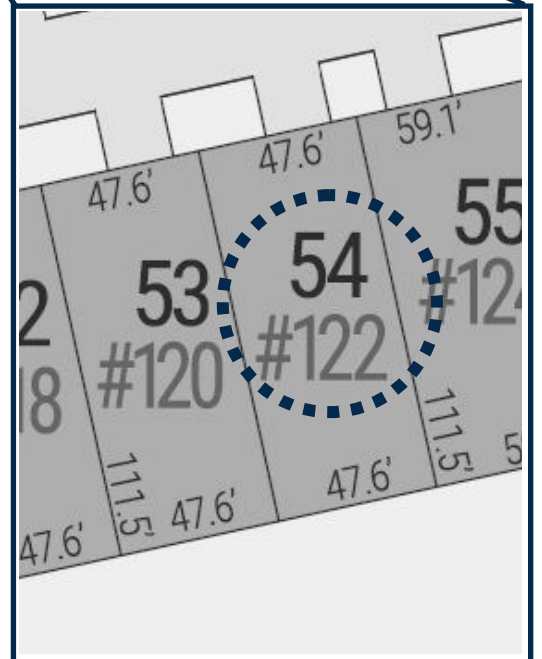


122 GRAYDON DR

EXTERIOR FEATURES:

- KEYLESS ENTRY
- TREATED WOOD DECK
- BBQ GAS LINE
- ASPHALT DRIVEWAY
- WALKING TRAILS

HAYHOE™
HOMES

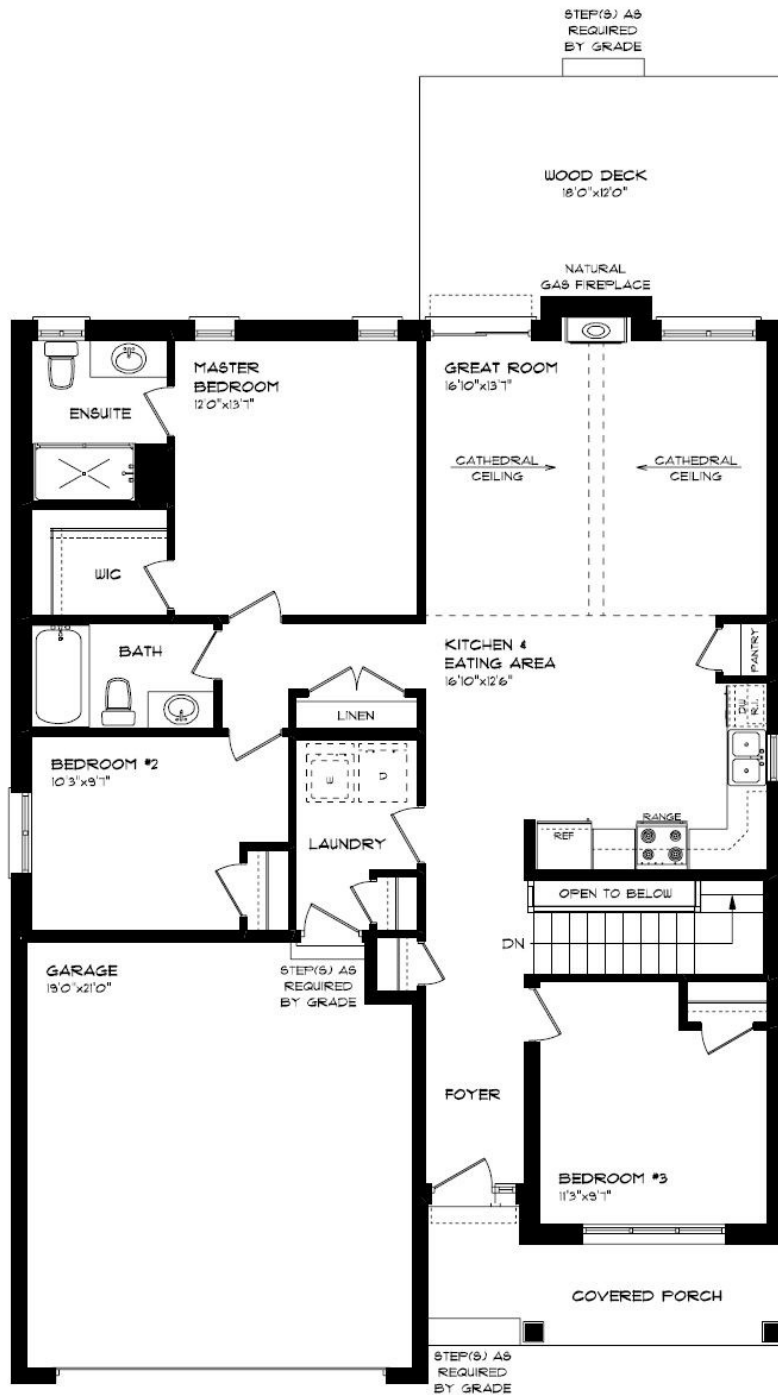


MOUNT ELGIN

MEADOW
LANDS

MAIN FLOOR

122 GRAYDON DR, MOUNT ELGIN



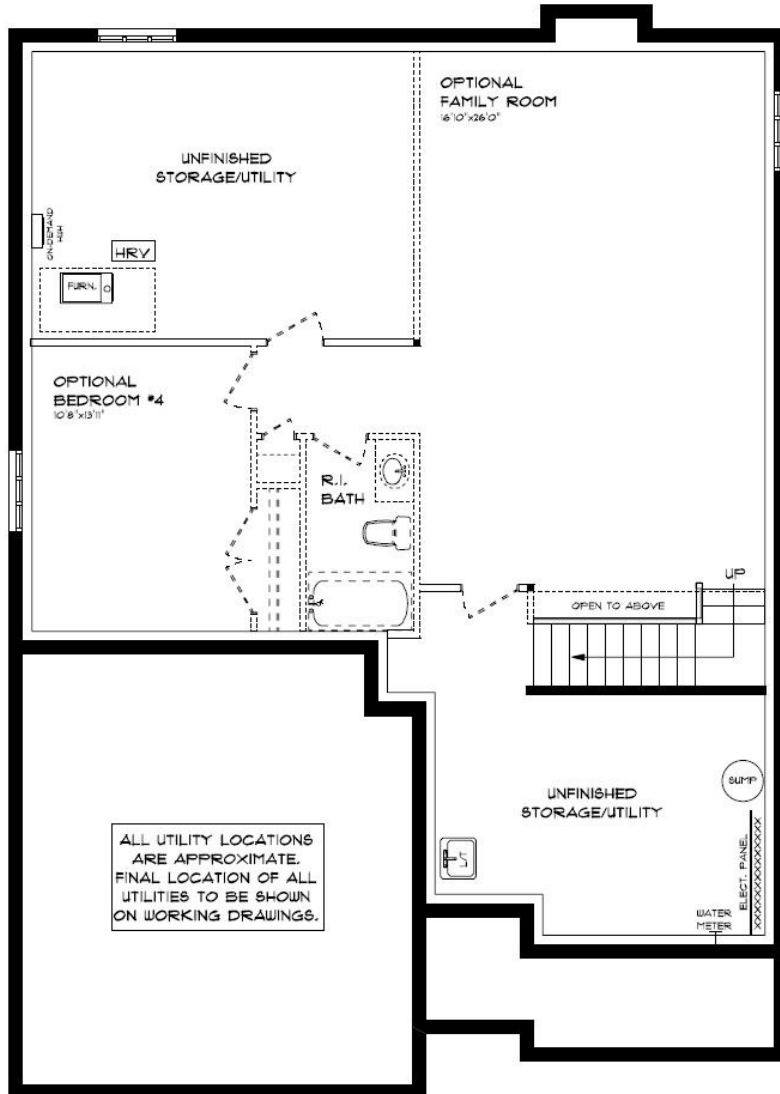
MAIN FLOOR LAUNDRY
CUSTOM CABINETS & HOOD
LVP FLOORING
QUARTZ COUNTERTOPS
KITCHEN BACKSPLASH

MAIN FLOOR:
APPROX 1428 SQFT

HAYHOETM
— HOMES —

BASEMENT

122 GRAYDON DR, MOUNT ELGIN



BASEMENT:
UNFINISHED

AIR CONDITIONING
GAS FURNACE WITH HRV
HUMIDIFIER
NEW HOME WARRANTY

HAYHOETM
— HOMES —

EXTERIOR FINISHES

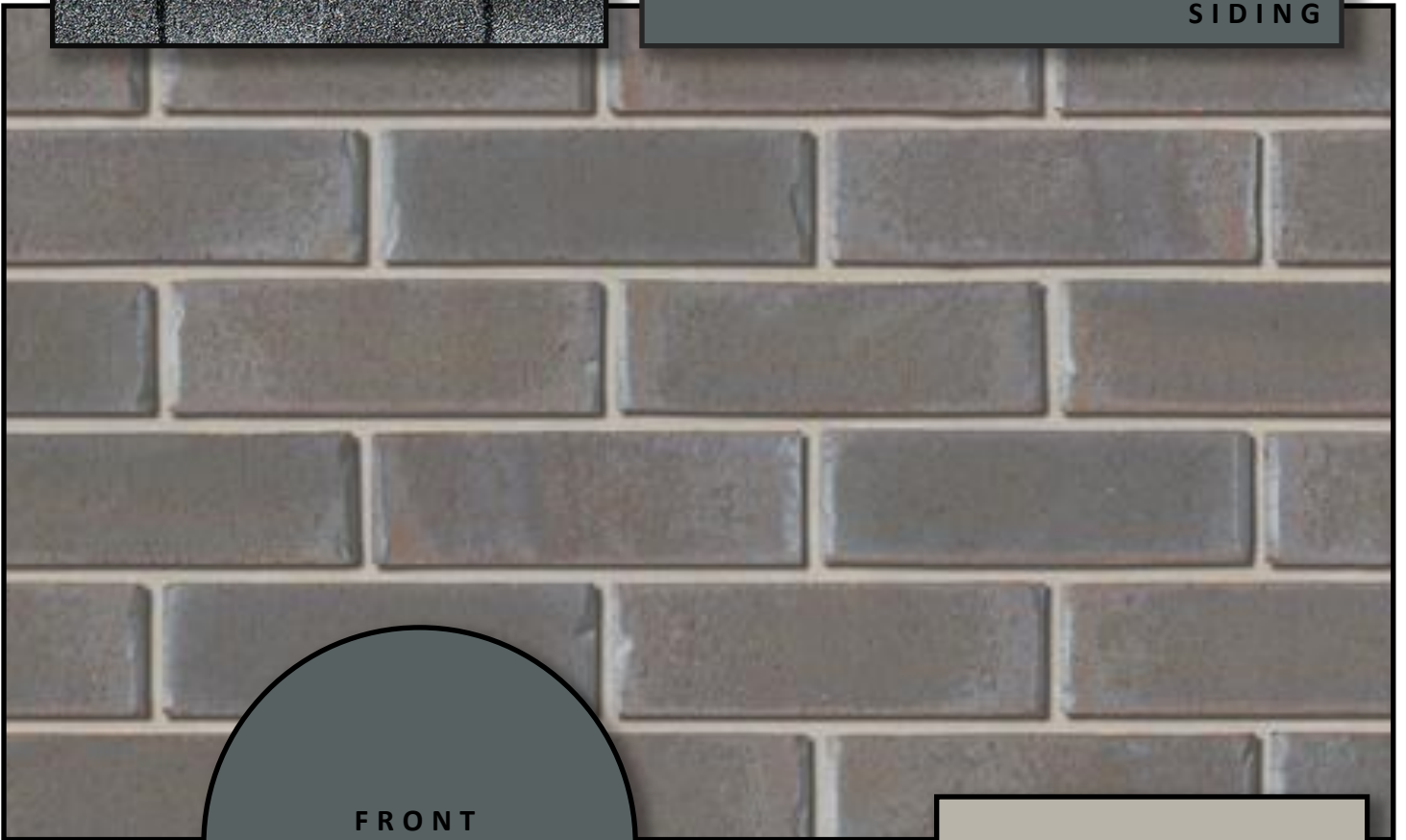
SHINGLES



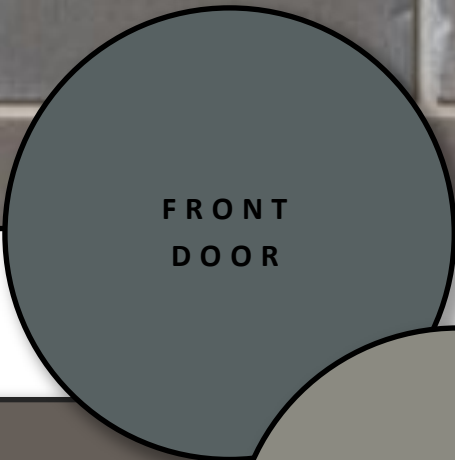
122 GRAYDON DR



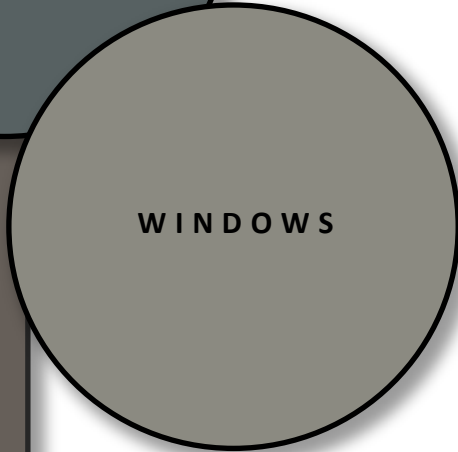
SIDING



BRICK

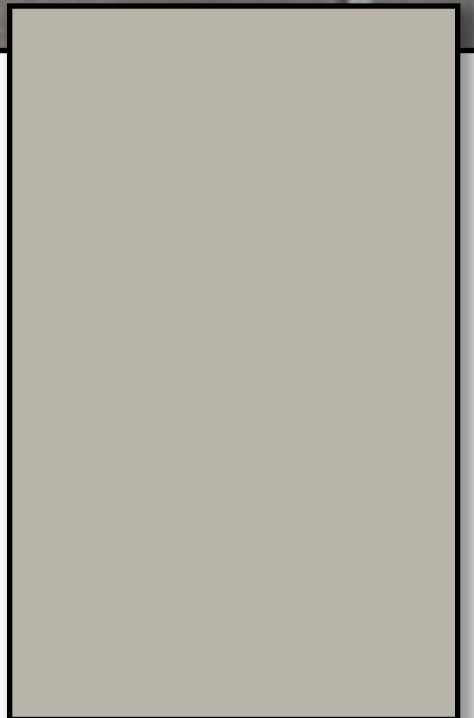
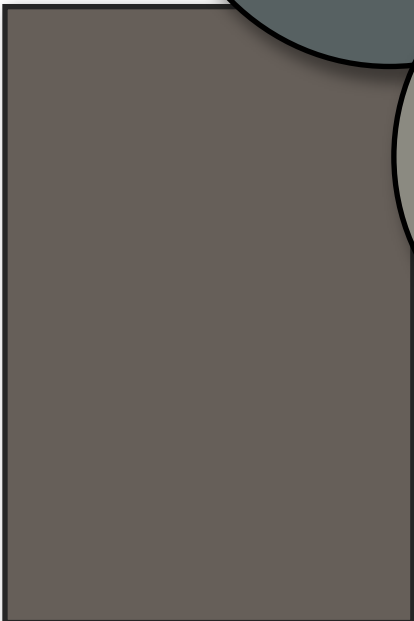


FRONT
DOOR



WINDOWS

GARAGE DOOR



ALUMINUM



INTERIOR FINISHES

KITCHEN BACKSPLASH



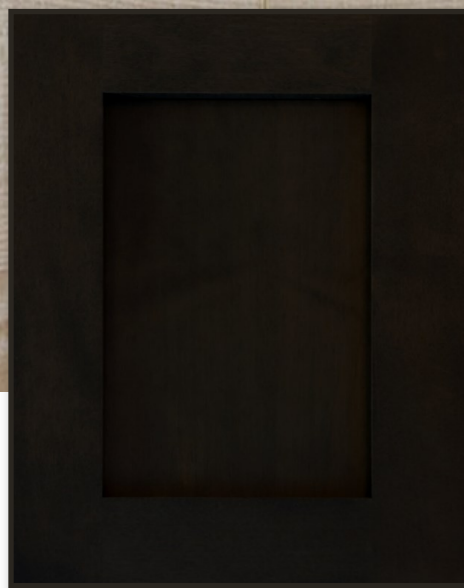
122 GRAYDON DR



QUARTZ KITCHEN
COUNTERTOPS



LUXURY VINYL PLANK



STAINED KITCHEN
LOWERS



PAINTED KITCHEN
UPPERS



PAINT
COLOUR

HAYHOE™
—•HOMES•—

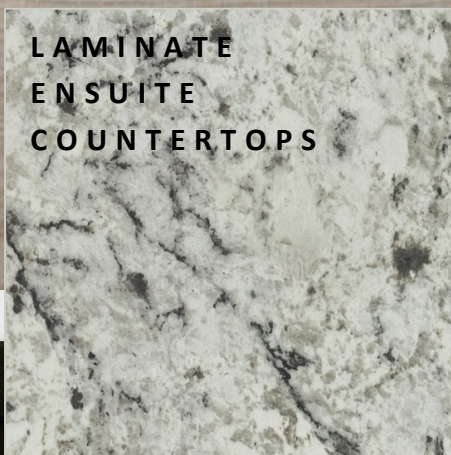
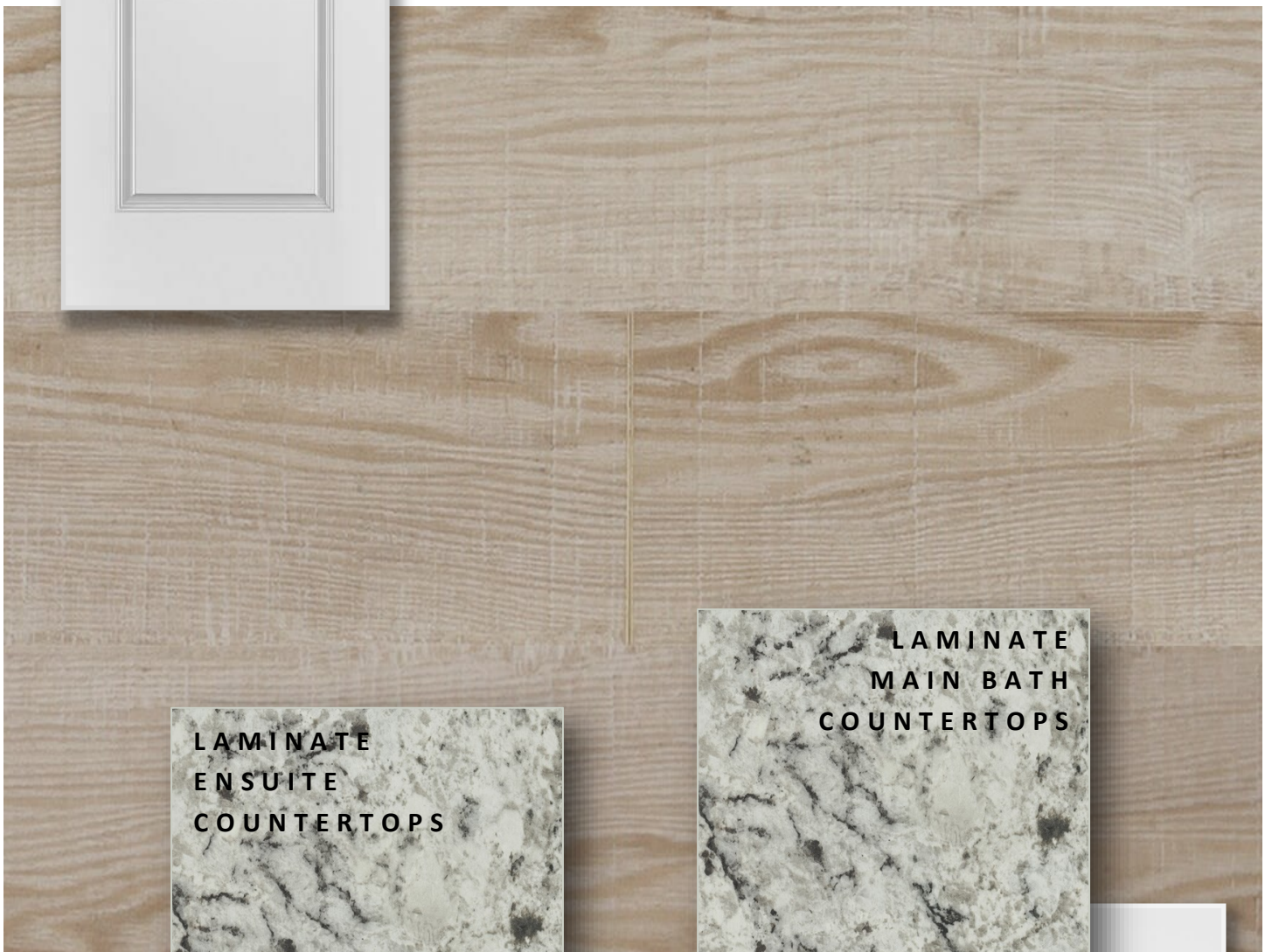
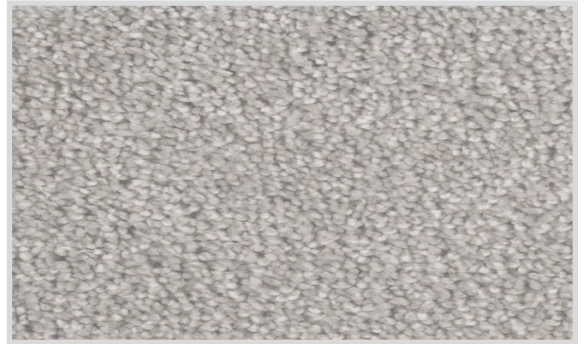
INTERIOR FINISHES

122 GRAYDON DR

INTERIOR DOOR STYLE



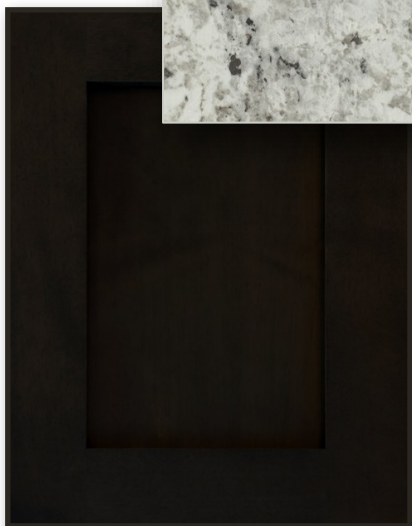
CARPET



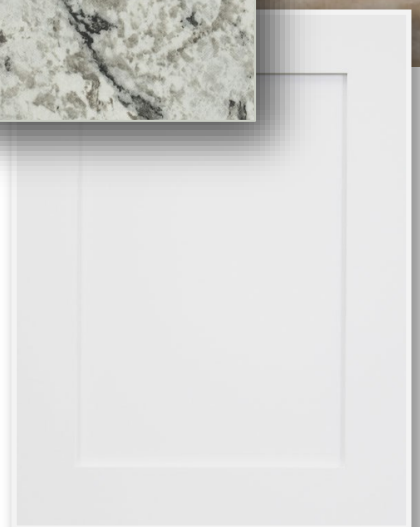
LAMINATE
ENSUITE
COUNTERTOPS



LAMINATE
MAIN BATH
COUNTERTOPS



STAINED
ENSUITE
CABINETRY



PAINTED
MAIN BATH
CABINETRY

